

Product datasheet for **MG219815**

Nsd2 (NM_001081102) Mouse Tagged ORF Clone

Product data:

Product Type:	Expression Plasmids
Product Name:	Nsd2 (NM_001081102) Mouse Tagged ORF Clone
Tag:	TurboGFP
Symbol:	Nsd2
Synonyms:	5830445G22Rik; 9430010A17Rik; AW555663; C130020C13Rik; D030027O06Rik; D930023B08Rik; mKIAA1090
Mammalian Cell Selection:	Neomycin
Vector:	pCMV6-AC-GFP (PS100010)
E. coli Selection:	Ampicillin (100 ug/mL)
ORF Nucleotide Sequence:	>MG219815 representing NM_001081102 Red=Cloning site Blue=ORF Green=Tags(s)

TTTTGTAATACGACTCACTATAGGGCGGCCGGAATTCGTCGACTGGATCCGGTACCGAGGAGATCTGCC
GCCGCGATCGCC

ATGGAATTTAGCATCAGAAAAAGTCCTCTTTCTGTTTCAGAAAGTTGTAAGTGCATGAAGATGAAGCAGA
CACCAGAAATCCTTGGCAGTGCAAATGGAAAGACTCAGAACTGTGAAGTGAATCATGAATGTTCTGTATT
CCTCAGCAAAGCTCAACTTTCTAACAGCCTACAGGAGGGGGTCATGCAGAAATTTAATGGCCATGATGCG
CTCCCCCTTTCTCCAGCAGAGAAGTTGAAAGATCTTACTTCTTGTGTTTTAATGGAGAACCTGGTGCTC
ATGATACTAAATGTGTTTTGAGGCCAGGAAGTAAAAGGAATGGGACACCACCAATACTACACCTAT
CAAAAATGGCTCTCCAGAAATTAAGTAAAATCACCACCAATACATGAATGGGAAACCTCTCTTTGAA
TCTTCAATTTGTGGTGACGGTGCTGCTGATGTGTCTCAGTCAGAAGAAAACGAACAAAAATCTGATAATA
AGACTAGGAGGAACAGGAAGAGGAGCATAAAATATGACTTTTACTGGAGCAGGGCCTTGTGGAAGCAGC
TTTAGTGTCCAAGATCTCAAGTCTGCAGATAAAAAGATTCCAGTTAAGAAGGAGTCTGTCCAATACT
GGCAGAGACAGAGACCTCTTGTAAAAATACAACGTTGGTGATTTGGTGTGGTCCAAGTGTGAGTTACC
CTTGGTGGCCTTGCATGGTTTTCTGCTGACCCACTCCTTCACAATCATACCAAACCTAAAGGTGAGAAAA
AAGTGCACGCCAGTATCATGTACAGTCTTTGGTGATGCCCCAGAAAGAGCTTGGATATTTGAGAAGAGC
CTTGTGCTTTTGAAGGAGAAGAACAATTTGAAAAATATGCCAAGAAAGTGCCAAGCAGGCACCCACGA
AAGCTGAGAAAAACAAGTTGTTGAAACCTATTTGCGGGAGATTGAGAGCCAGTGGGAAATGGGCATTGT
CCAAGCTGAGGAAGCTGCCAGCATGTCAATAGAGGAGCGGAAAGCCAAATTTACCTTCTTTATGTGGGG
GACCAATTGCACCTCAACCTCAAGTAGCTAAGGAGGCTGGCATTGTTACAGAACCTTTGGGAGAAATGG
TGGACTCTTCAGGGGCCAGTGAAGAGGCTGCTGTAGACCCTGGTCTGTGAGAGAAGAGGATATTTCCAC
GAAGAGAAGGCGAAGAACCAAAAGGTCTAGTTCTGCTGAGAACCAAGAAGGTGATCCTGGCACAGACAAG
AGTACACCTCAAAGATGGCAGAGGCTGAACCTAAGCGAGGAGTAGGCTCTCCTGCTGGGAGGAAAAAGT
CCACAGGCTCTGCTCCTCGGAGCAGGAAGGAGACTCAGCAGCCAGTTTTTAGTCTTTTGTCAAAAAACA



[View online »](#)

CAGAGATGAGGTTGTAGCTGAACATCCAGATGCCTCAGGGGAAGAGATTGAAGAATTGCTTGGGTCCCAG
TGGAGCATGCTCAATGAAAAGCAGAAAGCAGATATAATACAAAGTTTTCCCTAATGATCTCTGCCCAGT
CTGAAGAAGACTCTGAAATGGGAATGGGAAAAAAGAAGCCACACAAAGAGAGCAGATGACCCTGCAGA
GGATGTGGATGTTGAAGACGCGCCAGGAAAAGACTTAGAGCAGATAAGCACAGTCTTCGGAAGCAGAGA
GAGACAATCACCGACAAAACGGCCAGAACAAGCTTTACAAGGCTATAGAGGCAGCCTCCTCACTCAAGA
GCCAGGCACGAACGAAAAATTTGTCTGATGCTTGCAAACCACTGAAGAAGCGAAAATCGGGCTTCTGCAAC
AGCGTCTTCAGCACTTGGGTTTAAACAAAAGTTTCATCTCCTTCTGCATCCTTAACCTGAGCATGAGGTCTCA
GACAGCCAGGAGATGAACCATCAGAGTCTCCATATGAAAGTGCAGATGAAACACAGACTGAAGCATCCG
TCTCATCTAAAAAATCTGAAAGAGGAATGGCTGCCAAAAAGGAGTACGTGTGTCAGCTGTGTGAGAAGAC
AGGCAGTCTTACTGTGTGAGGGCCCCTGTTGTGGAGCATTCCACCTAGCCTGCCTTGGACTTTCCCGA
AGACCGGAAGGAAGATTCACCTGCACCGAATGTGCCTCAGGGATCACTCATGCTTCGTATGTAAGAAA
GCAAGATGGAGGTGAAACGTTGTGTGTAATCAGTGTGGAAAGTTTTACCATGAAGCCTGTGTAAAAAA
ATACCCTCACTGTGTTTGAGAGCCGAGGCTTCCGCTGTCTCCATAGCTGTATGAGCTGCCATGCC
TCCAACCTTCAAATCCACGGCCATCAAAGGTAAAATGATGCGATGTGTCGATGCCCGTTGCCATC
ATGGAGGGGATGCCTGTCTGGCAGCAGGATGTTCCGGTATTGCTTCTAACAGCATAATCTGCACAGGCCA
CTTCACTGCCCGAAGGGGAAGCGGCACCATACCCATGTCAATGTGAGCTGGTGTCTTGTGTCTCCAAA
GGGGGAAGCCTTCTGTGCTGTGAGGCCTGCCCAGCAGCCTTTCACCCCGATTGTCTAAACATCGAGATGC
CCGATGGTAGCTGGTTCTGCAACGATTGCCGGGCTGGAAGAAGCTCCACTTTCAGACATCATCTGGGT
CAAACCTGGTAACTACAGATGGTGGCCGCGAGAAGTTGCCATCCAAAAATGTTCCCCCAAAATATTCAG
AAAATGAAGCAGCAGATTGGAGAATCCCTGTATTTTTCTTTGGGTCTAAAGATTACTGGACGCATC
AGGCACGAGTGTCCCATACATGGAGGGGGACCGGGCAGCCGCTACCAGGGGTGAGAGGGATCGGAAG
AGTCTTCAAGAACGCATTGCAAGAAGCTGAAGCTCGTTTTAATGAAGTCAAACCTCAGCGGAAGCCCGA
GAAACACAGGAGAGTGAAGAAAAGCCTCCACCATACAAGCATATCAAGGTGAATAAACCTTATGGTAAAG
TCCAGATCTACACAGCTGACATTTCTGAAATCCCGAAGTGAACCTGTAAGCCACAGATGAGAACCCTG
TGCTCTGATTACAGAGTGTCTGAACAGGATGCTAATGTTTGAGTGCCACCCGAGGTGTCTCCTGCAGGG
GAATACTGCCAGAACCAGTGTTCACCTAAGCGCCAGTACCCTGAGACCAAGATCATCAAGACAGATGGCA
AAGGGTGGGGCCTGGTTGCCAAAAGGGACATCAGAAAAGGAGAATTTGTTAATGAGTATGTTGGTGAAGT
GATTGATGAAGAGGAGTGTATGGCAAGAATCAAATATGCACATGAGAATGACATCACTCACTTCTACATG
CTCACCATAGACAAGGACCGCATAATTGATGCTGGCCCCAAAGGGAAATTTACGATTCATGAACCATA
GCTGCCAGCCCAATTGTGAGACCCTGAAGTGGACAGTGAATGGGACACACGGGTGGCCTGTTTGTGT
GTGTGACATTCTGCAGGTACAGAGCTGACTTTCAACTATAACCTTGATTGTTTGGCAATGAAAAGACA
GTCTGTGGTGTGGAGCCTCCAACCTGTAGTGGGTTCTTTGGAGACAGACCAAGACATCAGCATCCCTTT
CATCAGAGGAAAAGGGTAAAAAGGCCAAGAAGAAAACCAGAAGGCGCAGAGCCAAGGGTGAAGGAAAACG
GCAGTCAGAGGATGAGTCTTCCGCTGTGGTATGGTGGGCAGCTGGTGTGTGTGACCGCAAGTCTGT
ACCAAGGCCTACCACCTATCCTGCCTCGGTTTGGGCAAGCGGCCCTTTGGGAAGTGGGAATGTCCTTGGC
ATCACTGTGATGTATGTGGCAAACCTTCTACCTCATTTTGCCACCTCTGCCCAACTCATTCTGTAAGGA
ACACCAAGATGGGACTGCTTCCGTTCCACCCAGGATGGGCAGTCTACTGCTGTGAGCATGACTTGAGG
GCAGACTCTTCAAGTAGCACCAAGACTGAGAAAACCTTTCCAGAATCACTGAAGTCAAAGGAAAAGAGGA
AGAAAAGCGGTGCTGGCGAAGGGTCACAGATGGCAAA

ACGCGTACGCGGGCCGCTCGAG - GFP Tag - GTTTAA

Protein Sequence: >MG219815 representing NM_001081102
 Red=Cloning site Green=Tags(s)

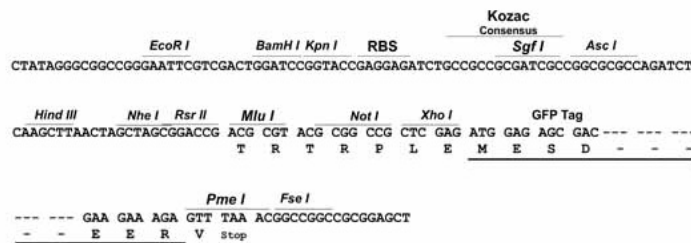
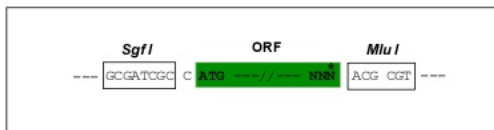
MEFSIRKSPLSVQKVVKCMKMQTPEILGSANGKTQNCENVHECSVFLSKAQLSNSLQEGVMQKFNHDA
 LPFLPAEKLKDLTSCVFNGEPGAHDTKLCFEAQEVKIGTTPNTPPIKNGSPEIKLKITKTYMNGKPLFE
 SSICGDGAADVQSSEENEQKSDNKTRNRKRRIKIDSLLEQGLVEAALVSKISSPADKKIPVKKESCNT
 GRDRDLLLKYNVGDLVWSKVSGYPWPCMVSAADPLLHNHTKLGKQKKSARQYHVQFFGDAPERAWIFEKS
 LVAFEGEEQFEKLCQESAKQAPTKAEIKLLKPI SGRLRAQWEMGIVQAEAAASMSIEERAKFTFLYVG
 DQLHLNPQVAKEAGIVTEPLGEMVDSSGASEAAVDPGVSREEDIPTKRRRRTRKRSSSAENQEGDPGTDK
 STPPKMAEAEPKRGVSPAGRKKSTGSAPRSRKGDSAAQFLVFCQKHRDEVVAEHPDASGEEIEELLGSQ
 WSMLEKQKARYNTKFLMISAQSEEDSGNGGKRSHTKRADDPADVDVEDAPRKRLRADKHSRKRQR
 ETITDKTARTSSYKAI EAASSLKSQAATKNLSDACKPLKRNRSATASSALGFNKSSSPASL TEHEVS
 DSPGDEPSESPYESADETQTEASVSSKKSERGMAAKKEYVCQLCEKTGSLLLCEGPCCGAFHLACLGLSR
 RPEGRFTCTECASGIHSCFVCKESKMEVKRCVVNQCGKFYHEACVKKYPLTVFESRGRFRCPLHSCMSCHA
 SNPSNRPSPKGMRCVRCVAVYHGGDACLAAGCSVIASNSI ICTGHFTARKGKRHHTHVNSWCFVCSK
 GGSLLCCEACPAAFHPDCLNIEMPDGSWFCNDCRAGKCLHFQDI IWWKLGNYRWWPAEVCHPKNVPNIQ
 KMKHEIGEFPPVFFFGSKDYWTHQARVFPYMEGDRGSRVQGVIRGVFKNALQEAEARFNEVKLQREAR
 ETQESERKPPPYKHIVNKPYGKVIYTDI SEIPKCNCKPTDENPCGSDSECLNRLMFECHPQVCPAG
 EYCQNQCFTKRQYPETKIIKTDGKGWGLVAKRDIRKGEFVNEYVYVGELEDEECMARIKYAHENDITHFYM
 LTIDKDRIIDAGPKGNYSRSMNHSCQPN CETLKWTVNGDTRVGLFAVCDIPAGTELTFNINLDCLGNEKT
 VCRGASNCSGFLGDRPKTSASLSSEKGGKAKKTRRRRAKGEGRQSEDECFRCGGGQLVLCDRKFC
 TKAYHLSCLGLGKRPF GKWECPWHHCDCVCGKPSTSFCHLCPNSFCKEHQDGTAFRSTQDGGQSYCCEHDLR
 ADSSSSTKTEKPFPELKS KSKGKRKRRCWRRVTDGK

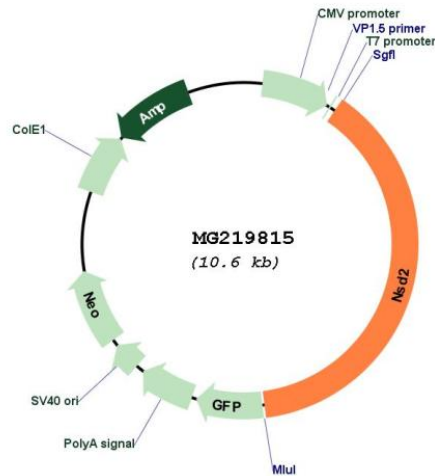
TRTRPLE - GFP Tag - V

Restriction Sites: SgfI-MluI

Cloning Scheme:

Cloning sites used for ORF Shuttling:



Plasmid Map:


ACCN: NM_001081102

ORF Size: 4098 bp

OTI Disclaimer: The molecular sequence of this clone aligns with the gene accession number as a point of reference only. However, individual transcript sequences of the same gene can differ through naturally occurring variations (e.g. polymorphisms), each with its own valid existence. This clone is substantially in agreement with the reference, but a complete review of all prevailing variants is recommended prior to use. [More info](#)

OTI Annotation: This clone was engineered to express the complete ORF with an expression tag. Expression varies depending on the nature of the gene.

Components: The ORF clone is ion-exchange column purified and shipped in a 2D barcoded Matrix tube containing 10ug of transfection-ready, dried plasmid DNA (reconstitute with 100 ul of water).

Reconstitution Method:

1. Centrifuge at 5,000xg for 5min.
2. Carefully open the tube and add 100ul of sterile water to dissolve the DNA.
3. Close the tube and incubate for 10 minutes at room temperature.
4. Briefly vortex the tube and then do a quick spin (less than 5000xg) to concentrate the liquid at the bottom.
5. Store the suspended plasmid at -20°C. The DNA is stable for at least one year from date of shipping when stored at -20°C.

RefSeq: [NM_001081102.2](#), [NP_001074571.2](#)

RefSeq Size: 6936 bp

RefSeq ORF: 4101 bp

Locus ID: 107823

UniProt ID: [Q8BVE8](#)

Cytogenetics: 5 B2

Gene Summary: Histone methyltransferase with histone H3 'Lys-27' (H3K27me) methyltransferase activity.
[UniProtKB/Swiss-Prot Function]