

Product datasheet for **MG219763**

Klrb1c (NM_001159904) Mouse Tagged ORF Clone

Product data:

Product Type:	Expression Plasmids
Product Name:	Klrb1c (NM_001159904) Mouse Tagged ORF Clone
Tag:	TurboGFP
Symbol:	Klrb1c
Synonyms:	AI462337; CD161; ly-55c; Ly-59; Ly55c; Ly59; Nk-1; Nk-1.2; NK-RP1; Nk1; NK1.1; Nk1.2; NKR-P1.9
Mammalian Cell Selection:	Neomycin
Vector:	pCMV6-AC-GFP (PS100010)
E. coli Selection:	Ampicillin (100 ug/mL)
ORF Nucleotide Sequence:	>MG219763 representing NM_001159904 Red=Cloning site Blue=ORF Green=Tags(s)

TTTTGTAATACGACTCACTATAGGGCGGCCGGAATTCGTCGACTGGATCCGGTACCGAGGAGATCTGCC
GCC**CGATCGCC**

ATGGAGAAACCTCAGAGACAGGAATCAGTGGGTGTGGGAACAGAGCAGAGCATTACAGAGGACTTTCT
TTTGCTTATTTACCTCAAAGGCCTTGGAGTTTGTCCCTTCTCACCACCAGTTAAGTGTTGCATCTCCTG
TGAAATGGACACAGCAAGTATCTACCTCGGTTTAAAGCCACCCAGGACTGGGGCTTGGCATGAGTCA
CCCCATCTTCCCCAGATGCCTGTCGGTGCCACGTTACACAGGTTGGCTCTGAAGCTCAGCTGTG
CTGGGCTCATCCTCCTTGTCTGACCCTGATTGGGATGAGTGTCTTAGTGCGAGTCTTAGTACAAAAACC
ATCAAGAGAAAAATGCTGTGTGTTTATTCAAGAGAACCTGAATAAAACAACAGATTGTTCAAGTTAATTTA
GAGTGCCACAAGACTGGCTTTTACACCGAGATAAGTGCTTTCAGTTTCTCAAGTTTCCAACACTGGG
AGGAAGGTCAAGCTGACTGTGGTAGAAAAGGAGCCACTTTGCTGCTCATTCAAGCAAGAAGAAGTGGAG
ATTCCTACTGGACTCAATAAAGGAAAAATATAATTCATTTGGATTGGACTAAGGTTTACATTGGCAGAC
ATGAACTGGAAGTGGATAAATGGCACAACCTTTCAATTCTGATGTAATAAAATCACTGGTGTCACTGAAA
ATGGCAGCTGTGCCTCCATCTTAGGAGATAAAGTGACTCCTGAGAGCTGTGCTTCAGACAACCGTTGGAT
CTGCCAAAAGGAATAAACCATGAAACCCCGAGTAATGACTCC

ACGCGTACGCGGCCGCTCGAG - GFP Tag - GTTTAA



[View online »](#)

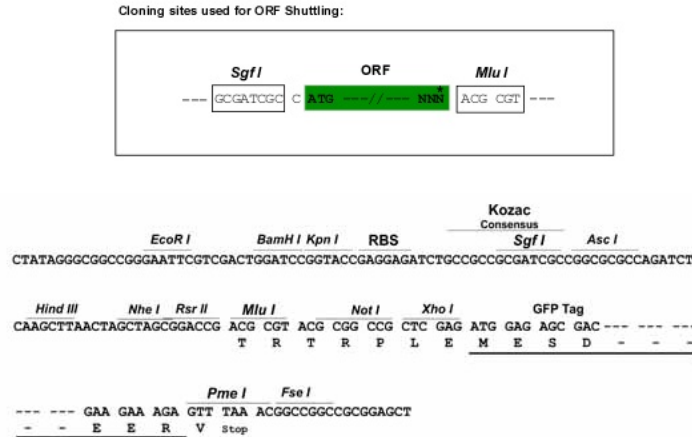
Protein Sequence: >MG219763 representing NM_001159904
Red=Cloning site Green=Tags(s)

MEKPSETGISGCGNRAEHSQRTFFCLFHLKGLGVCPFPPVKCCISCEMDTASIYLGKPPRTLGAWHES
 PPSLPPDACRCPRSHRLALKLSCAGLILLVLTIGMSVLVRVLVQKPSREKCCVFIQENLNKTTDCSVNL
 ECPQDWLLHRDKCFHVSQVSNTWEEGQADCGRKGATLLL IQDQEELRFLLDLSIKEKYNFSWIGLRF TLPD
 MNWKWINGTTFNSDVLKITGVTENGSCASILGDKVTPESCADNRWICQKELNHETPSNDS

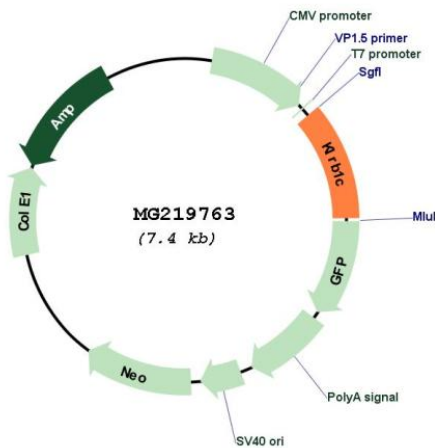
TRTRPLE - GFP Tag - V

Restriction Sites: SgfI-MluI

Cloning Scheme:



Plasmid Map:



ACCN: NM_001159904

ORF Size: 813 bp

OTI Disclaimer:	The molecular sequence of this clone aligns with the gene accession number as a point of reference only. However, individual transcript sequences of the same gene can differ through naturally occurring variations (e.g. polymorphisms), each with its own valid existence. This clone is substantially in agreement with the reference, but a complete review of all prevailing variants is recommended prior to use. More info
OTI Annotation:	This clone was engineered to express the complete ORF with an expression tag. Expression varies depending on the nature of the gene.
Components:	The ORF clone is ion-exchange column purified and shipped in a 2D barcoded Matrix tube containing 10ug of transfection-ready, dried plasmid DNA (reconstitute with 100 ul of water).
Reconstitution Method:	<ol style="list-style-type: none">1. Centrifuge at 5,000xg for 5min.2. Carefully open the tube and add 100ul of sterile water to dissolve the DNA.3. Close the tube and incubate for 10 minutes at room temperature.4. Briefly vortex the tube and then do a quick spin (less than 5000xg) to concentrate the liquid at the bottom.5. Store the suspended plasmid at -20°C. The DNA is stable for at least one year from date of shipping when stored at -20°C.
RefSeq:	NM_001159904.1 , NP_001153376.1
RefSeq Size:	2641 bp
RefSeq ORF:	816 bp
Locus ID:	17059
UniProt ID:	P27814
Cytogenetics:	6 63.09 cM
Gene Summary:	Plays a stimulatory role on natural killer (NK) cells cytotoxicity. Activation by cross-linking of the receptor induces Ca(2+) mobilization and interferon-gamma production. [UniProtKB/Swiss-Prot Function]