

## Product datasheet for **MG219756**

### Col4a6 (NM\_053185) Mouse Tagged ORF Clone

#### Product data:

Product Type:	Expression Plasmids
Product Name:	Col4a6 (NM_053185) Mouse Tagged ORF Clone
Tag:	TurboGFP
Symbol:	Col4a6
Synonyms:	BB116301
Mammalian Cell Selection:	Neomycin
Vector:	pCMV6-AC-GFP (PS100010)
E. coli Selection:	Ampicillin (100 ug/mL)
ORF Nucleotide Sequence:	>MG219756 representing NM_053185 Red=Cloning site Blue=ORF Green=Tags(s)

TTTTGTAATACGACTCACTATAGGGCGGCCGGAATTCGTCGACTGGATCCGGTACCGAGGAGATCTGCC  
GCC**CGATCGCC**

ATGCACCCTGGATTGTGGCTGTTCTGGTTTCCTTATGCTTGACCAAGAAGTGGCAGAATCGGGACAGA  
AGATGTCCTATGGAAAGCCATGTGGGAGCCGAGATTGCCATGGAGTCTGTACATGCTTTCCTGAGAAAGG  
AGCAAGAGGGCACCTGGACCAATTGGAAGTCAAGGTCCAGCCGGTCCGGAAGGGTTTACTGGTCCAAT  
GGTTTATCAGGTTTGAAGGAGAAAGAGGCTCCCAGGCCCTCTGGGACCATATGGATCAAAGGAGATA  
AGGGTCCCATTGGAGTTCCTGGCTTTGTTGGCATCAGTGGTATTCCGGGCCACCCTGGACAGCCAGGTCC  
AAGAGGTCCACCTGGCCCAGATGGCTGTAATGGAAGTCAAGGAGCTGTTGGATTTCCAGGCCCTGATGGC  
TACCCTGGGATTTTAGGACCACCTGGGCTGCCTGGTCACAAAGGTGCCAAAGGAGAGCCTGTTCTTTTC  
AAGGCAGCATTACAGGAATAAGGGGAGATCCTGGGCTGCCTGGACTAGATGGAATCCCTGGTCCATCAGG  
ATCCTCCGGCTCCTCGGAGATGCAGGACCCATAGGACCACCAGGCTTACAAGTCCCCAGGCCTCCCC  
GGACTTCCCGTCTCCTGGAGATGCAGGACCCATAGGACCACCAGGCTTACAAGTCCCCAGGCCTCCCC  
GCCTCCCTGGCCCTGCAGGACCCTCCATCTACTGGGAACTAGAATTCATGGGATCCCCAAAGGAAA  
GAAAGTTCCAAGGTGAGCCAGGGCTCCAGGTTTCCAGGAATGAGTGGCCCTCCAGGTGTCCCGGAA  
TTTGGATCTACTGGAGAAAAGGAGAAAAGGGATTCTTGGTTTCCAGGACCTAGGGTCCCATGGGTT  
CAGAAGGAATACAAGCCATCCAGGGAGACAGGAAAGAAGGGGACTTCAGGTTTTCTGGGATTAACGG  
GTTCCAGGAATTAAGGTTGAAAAGGGAGACATTTGGTGTTCGAGGCCAGACAGTTTCACTGATGCAGAT  
GGCGTGTGATCTCAGGTTATCCTGGAGACCCTGGTGTGCTGGGCCTTCCAGGCCTTAGAGGAGATGAAG  
GCGTCCAAGGCCAACGTGGCCCTCTGGAACCCCTGGCCTCCCATCATTAAACAGGTCTTCCAGGTGCCCT  
AGGGCCTCAGGGATTTCTGGCCTGAAAGGAGACCAAGGAACTCAGGACGTACCACCTTTGGAGAAGCT  
GGCCTACCTGGCAGGTTGGTTTACCAGGTTTACCAGGCCTGCCAGGCCATCAGGCCACCTGGTCGCA  
CATTTGAGACTGGACATCTGTCCAACATAGAGCCTGGGTTCCCTGGTCTCAAGGAGAACAAGTCCAAA  
AGGACATCAAGGCCTCAAAGGAGTAAAAGGAGACTCTGGTTTTGTGCTTGTGAAGGTGGTCCCCAAC



[View online »](#)

ATTGGACCACATGGGGAACCAAGTCTGCCTGGGATACAAGTCCCATTTGGTCTACAGGGTTTTAAGGGGA  
 CTAAGGAGATCCAGGCTCAAGGGGAGCATCTGGTCTGCAGGGACGCCAGGGCTATTTGGACCTAGAGG  
 TCAGACTGGCCTCAAAGGAAAGAAAGGAGAACCACTGTCAGTAGAGGATCAAAAATGTCAGGGGACAAA  
 GGTGACCCTGGTCTCAGGGTACCCAGGTTTGGCAGGAACTCCGGGCAAGGATGGAAGACCAGGTTTAC  
 CAGGCCTCCCAGGCATTCAGGGAGATGGTGGTCTGGCTTCCCAGGTGAAAGAGGGTTACCAGGACTTCC  
 TGGTAAAAAGGCCATGATGGTCCAATTGGACCACCAGGAATGGGCTGCCAGGACCTCCTGGGCCCCGT  
 GGACTTCTGGAGATAAAGGAGTAGATGGGTTACCAGGGCAACAAGGCCTCCGTGGAGCTCAAGGAGTCA  
 CCTTGCCTTGATCATTCTGGTCCATATGGTCCATCAGGATTTCTGGAGCTCCTGGATCCCAGGCTC  
 TAAGGGAGCTCGGGCCCTCCCTGGAATTCCAGGCAAGCCTGGCACTCACGGAAGCAAAGGAGGGCCTGGG  
 AGTCCAGGGTAAATGCATCTCCCAGGATTGCCAGGGTTTCTGGAGTTCTGTTGGGAGAAGGGATTACCTG  
 GGTTTCTGGGCTTCTGGAAAAGATGGCTACCCTGGGAAAGCTGGCAGTCCAGGGTTACCAGGTTTCAA  
 GGGAGCTGCTGGTACATATTTGGTGTGAAAATGGTGTCTCGGGGAGCAAGGCCTACAGGATTGCCA  
 GGGGACAAAGGATTTCTGGAGACTCTGGCCTTCCAGGACCAAGGGTTGAATGGGAAACCTGGTATGC  
 TAGGCCCAAGGGTGAGCGGGCAACCCGGAACATCAGGACCACCAGGACAGCCAGGACCCTCAGGGTC  
 TACTGACCATTGGCATCAAGGCACATCTGGATTTCCCAGGAGCACCAGGCCTTCCAGGCATCTCAGGG  
 CACCCTGGAAAGAAAGGTCAAAGAGGAGACATAGGTGAGCCTGGATCAACTGGAAAAAGAGGTCTACCTG  
 GGATAAAAGGCCTTCTGGTCTCAAGGGTCACTGGCTTCTGGGGAGCCCAGGTTTGTAGGCGTCCAC  
 TGGGTTGCCGGGCATCGAAGGCCAAAAGGGTAAAAGGGGCTCTCTGGACCAGTAGGATTTCTGGGTTA  
 CCTGGTCTTCTGGTCTTCTGGAGCTGATGGATTAAGGGATTTTCTGGGTCAATTTGAAAAGGTGGGAC  
 AACCTGGACAGACTGGTACTTCCGGAGAAAAAGGAGACAGAGGGGATCCAGGGCCAGTTGGCATATCTAG  
 TCCAAGACCTCCAATGCTAAACCTTTGGTTCAAAGGAGAAAAAGGCTCTCGAGTTTCTGCTGGATCGGAT  
 GGATTTCTGGGCCAGAGGTGACAAAGGAGAGCCTGGCATCCCAGGGTTACCAGGTCCACTGGAGCTA  
 CTGGACAAACCAATACCATCAAAGGGCTCAATGGGAGGCCAGTTCTCTGGATCTATGGAAAGGGGG  
 ATTACCTGGCCTGAAGGGTCTCTTGGGATTGCAGGTTTCCCAGGAATGCCAGGGAAAAAGCGGTTACAG  
 GGGCTCACTGGGACTTCTGGCCTCCTGGGAGCAACTGGTATCCCAGGTTTAAAAGGAGATCAAGGCCAAA  
 CACTTGGCATTCTGGAAGCCCAGGACCAAGGGACAGCCTGGAGAATTAGGTTTTAAAGGTGTCAAAGG  
 AAAAGATGGACTAGTTGGTATAGAGGTTACCCAGGAAACAAAGGTGATGGTGGAAAAGTTGGAATTACT  
 GGAGATCTGGCTTCCCTGGCTCCCAGGACTTCAAGGGATTTCAAGTATGAATGGAGACCAGGCTCC  
 CAGGTTCTCTGGCCATCTGGGTCAATTGGCCGCCCTGGACCCTCAGGCTTAATAGGACCTAAAGGATT  
 CCCTGGAGCTCCTGGTTTACATGGACTGAATGGACTTCCAGGCACCAAGGGCACCCATGGCACTCCAGGA  
 GCCAGTACTACTGGTGTCTCTGGGCCGGCTGGCCTGCCTGGTCCAAAGGGGAAAGGGGAGTGCCAGGAA  
 TTGTCATCGGAGATCCAGGGAAACAAGGTTCAAAGGGACAAAAAGGTGACCAAGGTTCCCCAGGCTTCA  
 AGGTCTGCTGGTACCCCTGGAGCCCAGGCATCTCCTTGCCCTCAGTCATAGCAGGACAGCCTGGTGCAC  
 CCTGGGCGGCCAGGCCTAGATGGAGAACGAGGCCGCCAGGCCCTCCAGGTCTCCAGGTCCCCCTGGGC  
 CATCCTCAGATCAAGGCGATCCTGGAGACTCTGGCTTCCCTGGGATTCCAGGCCTTCAAGGGTTCAAGGG  
 AAACCAAGGACTTCCAGGTTTCTCTGGCCTCTCTGGAGAGCTAGGGCTAAAGGGCATGAGAGGGGAACCT  
 GGCCTCATGGGGACTCCTGGCAAGATCGGGCAACCAGGAGACCCAGGATTTCTGGGATGAAGGGGAAGG  
 CGGGCCAAAGAGGCTTTCCGGCCACAGGAGCTCCAGGACACACCAATTGCTGAAGCTATGCAGGT  
 TCCTCCAGGACCTTTGGGTCTGCCAGGATTGATGGTATCCCAGGCCTCATAGGAGACCCTGGGTCTCAA  
 GGCTCTGTGGGTCTGCAAGGTTCCAAAGGCCTACCTGGCATCCCTGGTAAGGATGGCCCCAGTGGGCTTC  
 CAGGCCATCTGGAATCCTTGGTATCCTGGTCTCCCTGGACTACAAGGACCTCCAGGATTTGAAGGAGC  
 TCCGGGAAATCAGGGCCCCATTGGGCAGCCTGGGATGCCTGGGCACGGTGTGAGAGTGGGCTACACACTA  
 GTAACACACAGTCAGTCAGAACAGGTGCCACTATGCCCCACTGGGATGAGCCGGCTCTGGTGGGTTACA  
 GCTTGCTCTTCTGGAGGGGAGGAGAAAGCCATAACCAGGATCTGGGATTTGCTGGCTCCTGCCTGCC  
 CCGATTACAGCCATGCCCTTCAATACTGCAACATCAATGAAGTGTGCCACTATGCCAGACGCAATGAT  
 AAATCTTACTGGCTCTCCACTACTGCCCCATTCCCATGATGCCTGTGGGCCAGACCCAGATTCCCAGT  
 ATATCAGCCGCTGCTCTGTATGTGAGGCACCCTACAAGCATTGCTGTACACAGTCAGGACATCATTGT  
 CCCACAGTGCCCTCTGGGCTGGCACAGCCTCTGGATCGGATACTCCTTCCATGCACACTGCTGCTGGG  
 GCTGAGGGTGGAGGCCAGTCCCTAGTCTCCCCTGGCTCGTGTCTTGGAGACTTCCGGGCCACTCCTTTCA  
 TTGAGTGCAGCGGCGCCCGTGGTACATGCCACTACTTTGCCAACAAGTACAGTTTCTGGCTGACAACGGT  
 GGAGGAGAGAGGGCAGTTTCGGGAAGAGCCCGTGTCTGAGACGCTGAAAACCTGGGCGACTTACACCAGG  
 GTGAGCCGCTGCCAGGTGTATGAAAACCCCG

ACGCGTACGCGGCCGCTCGAG - GFP Tag - GTTTAA

Protein Sequence:

>MG219756 representing NM\_053185  
 Red=Cloning site Green=Tags(s)

MHPGLWLFLVSLCLTKELAESGQKMSYGKPCGSRDCHGVCTCFPEKGARGHPGPIGTQGPAGPEGFTGPT  
 GLSGLKGERGSPGLGPYGSKGDKGPIGVPGFVGTSGIPGHPGQPGPRGPPGPDGNGTQGAVGFPDGDG  
 YPGILGPPGLPGHKGAKGEPVFFQGSITGIRGDPGLPLDGIIPGSPGSSGSPGDAGPIGPPGLQGPPLP  
 GLPGPEGNMGLGFQGEKGVKGDVGLPGPAGPPPSTGELEFMGFPKGGKGSKEGEPGPPGPMGSPGVPVE  
 FGSTGEKGEKILGLPGRGPMGSEGIQGHPRQKKGTSGFPGINGFPFIKGEKGDIGVRGPDSTFDAD  
 GAVISGYPGDPVGLPLGLRGDEGVQQRGSPGTPGLPSLTGLPGALGPQGFPLKGDQGNISGRTTFGEA  
 GLPGRVGLPGLPGSPGPPGRTFETGHLNIEPFGPGLQGEQGPKHQGLKGVKGDGSGFCACEGGAPN  
 IGPHGEPGLPIQGP IGLQGFKGTGDPGSRGASGAPGTPGLFGPRGQTGLKGGKGEPTVSRGSKMSGDK  
 GDPGPGQTPGLAGTPGKDGPRGGLPGLPIQGDGSGFPGERGLPGLPGEKGHDGPIGPPGIGLPGPPGPR  
 GLPGDKGVDGLPGQQGLRGAQGVTLPCIIPGSGYSPGFPAGPFPKSGARGPLGIPGKPGTHGSKGGPG  
 SPGLMHLPLPGFPGVRGEKGLPGFPLPGKDGYPGKAGSPGLPGFKAAAGDIFGAENGASGEQGLQGLP  
 GDKGFPDGLPGPKLNGKPGMLGPKGERGNPGTSGPPGQPGSGSTDPFGIKGTSGFPGAPPLPGISG  
 HPGKKGQRDIDGQPGSTGKRGLPGIKLPGPQSGPGLGSPGLSGVTGLPIEGQKGEKSSGVPVGFPL  
 PGLPGLPGADGLKGFSGSFGKVGQPGQTGTSSEKGDGDPGVPVGISSPRPMLNLWFKGEKSGRSAGSD  
 GFPGRGDKGEPGIPGLPPPPATGQNTIKGLNGRPGSPGSMGRRGLPGLKSLGIAGFPMPGKSGSQ  
 GLTGTSGLLGATGIPGLKGDQQTLLGISGSPGPKGQPGELGFKGVKGDGLVDRGYPGNKGDGGKVGIT  
 GDPGFPSPGLQGISGMNDPGLPGSSGHLGSI GRPSPGLIGPKGFPAGPLHGLNGLPGTKGTHGTPG  
 ASITGVPGAPGLPGPKGERGVPGIIVIGDPGKQSGKQKGDQGSPLQGPAGTPGAPGISLPSVIAQPGD  
 PGRPGLDGERGRPPGPPGPPGSSDQDQDPSGFPPIGLQGFKNQGLPGFSGLSGELGLKGMRGE  
 GLMGTGPKIGQPGDPGFPGMKAGPRGFSGPQAGPHTPIAEAMQVPPGPLGLPGIDGIPGLIGDPSQ  
 GSVGLQGSKGLPGIPGKDGPSGLPGPSGILGDPGLPGLQPPGFEGAPGNQGPIGQPGMPGHGVRVGYTL  
 VKHSQSEQVPLCPTGMSRLWVGYSLLFVEGQEKAHNQDLGAGSCLPRFSTMPFIYCNINEVCHYARRND  
 KSYWLSTTAPIPMMPVGTQIPQYISRCSVCEAPSQAI AVHSQDIIVQCPLGWHSLWIGYSFLMHTAAG  
 AEGGGQSLVSPGSCLEDFRATPFIECSGARGTCHYFANKYSFWLTTVEERGQFREEPVSETLKTGQLHTR  
 VSRCQVCMKTP

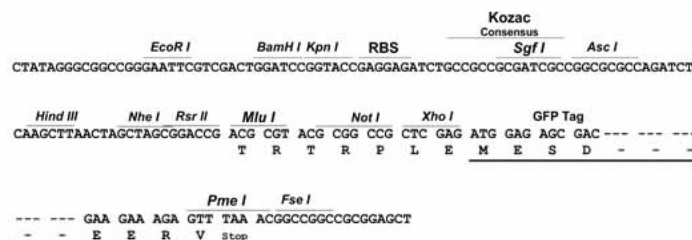
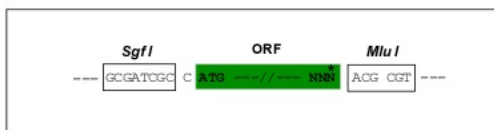
TRTRPLE - GFP Tag - V

Restriction Sites:

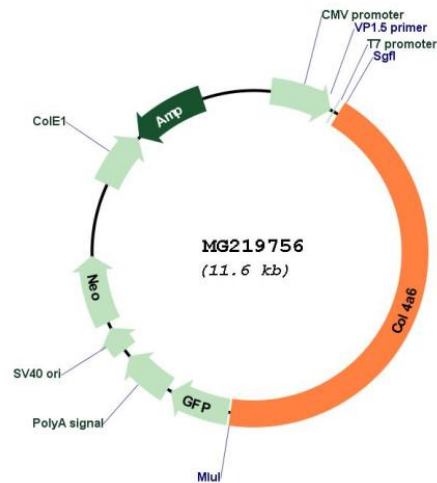
SgfI-MluI

Cloning Scheme:

Cloning sites used for ORF Shuttling:



Plasmid Map:



ACCN: NM\_053185

ORF Size: 5073 bp

OTI Disclaimer: The molecular sequence of this clone aligns with the gene accession number as a point of reference only. However, individual transcript sequences of the same gene can differ through naturally occurring variations (e.g. polymorphisms), each with its own valid existence. This clone is substantially in agreement with the reference, but a complete review of all prevailing variants is recommended prior to use. [More info](#)

OTI Annotation: This clone was engineered to express the complete ORF with an expression tag. Expression varies depending on the nature of the gene.

<b>Components:</b>	The ORF clone is ion-exchange column purified and shipped in a 2D barcoded Matrix tube containing 10ug of transfection-ready, dried plasmid DNA (reconstitute with 100 ul of water).
<b>Reconstitution Method:</b>	<ol style="list-style-type: none"><li>1. Centrifuge at 5,000xg for 5min.</li><li>2. Carefully open the tube and add 100ul of sterile water to dissolve the DNA.</li><li>3. Close the tube and incubate for 10 minutes at room temperature.</li><li>4. Briefly vortex the tube and then do a quick spin (less than 5000xg) to concentrate the liquid at the bottom.</li><li>5. Store the suspended plasmid at -20°C. The DNA is stable for at least one year from date of shipping when stored at -20°C.</li></ol>
<b>RefSeq:</b>	<u>NM_053185.2</u> , <u>NP_444415.2</u>
<b>RefSeq Size:</b>	6648 bp
<b>RefSeq ORF:</b>	5076 bp
<b>Locus ID:</b>	94216
<b>Cytogenetics:</b>	X F1-F2