

Product datasheet for **MG219710**

Slc2a6 (NM_172659) Mouse Tagged ORF Clone

Product data:

Product Type:	Expression Plasmids
Product Name:	Slc2a6 (NM_172659) Mouse Tagged ORF Clone
Tag:	TurboGFP
Symbol:	Slc2a6
Synonyms:	A330096C23; F630103L12Rik; Glut6; Glut9
Mammalian Cell Selection:	Neomycin
Vector:	pCMV6-AC-GFP (PS100010)
E. coli Selection:	Ampicillin (100 ug/mL)



[View online »](#)

ORF Nucleotide Sequence:

>MG219710 representing NM_172659
 Red=Cloning site Blue=ORF Green=Tags(s)

TTTTGTAATACGACTCACTATAGGGCGGCCGGAATTCGTCGACTGGATCCGGTACCGAGGAGATCTGCC
 GCC**GCGATCGCC**

ATGCAGGAACCCCTGCTAAGAACCAGGGACTCGACTATGATACCTCCCGAGGTGCCCGGACTCCTG
 GAGAGAGAGAACGAGCCGGGCCTTAAAAACAGAAGGGTGTTCCTGGCTACCTTCGCCGTGTGCTGGG
 CAATTTACAGCTTTGGGTATGCCTTGGTCTACACATCTCCAGTCATCCCTGAACTGAAGCTCTCTTGAC
 CCAGCACTACACCTGGACAAAATCCAGGCATCCTGGTTTGGGTCCGTGTTACCTTGGTGCCGACGAG
 GGGGCCTCAGTGCTATGTTACTCAATGACCTCCTGGGCCGAAGCTCAGCATCATGTTCTCAGCTGTCCC
 CTCAGCCATTGGCTATGCAATCATGGCCGGTCCCGTGGCCTCTGGATGCTTCTGTTGGGAGGATGCTG
 ACGGGCTTGGCCGGGACTCACTGCTGCCTGCATCCCGGTGTACGTGTCTGAGATTGCACCCCTGATG
 TTCGTGGGGCCCTGGGGCCACACCGCAGCTCATGGCCGTGTTGGATCCCTGTCTCTACGCCCTTGG
 TCTGCTGTACCTTGGCGATGGCTTGTGTGGCTGGAGAGGGGCCGTTCTCATCATGATCTGCTGCTC
 AGCTTCATGCCAACTCTCCTCGCTTCTTGTCTCAAAGAGCCGGATGAGGAGGACTGCAGGCGCTGA
 CCTGGCTGCGAGCTGACTCCGAGGTCCATTGGGAGTTTGGAGAGATCCAGGACAACGTGCCGAGACAGAG
 TAGCCGAGTGTGCTGGCGGAAGCCCGGAACCCCGTGTGTACCGGCCTGTTCTCATTGCAGTACTGATG
 CGCTTTCTGCAGCAGCTGACAGGCATCACACCCATCCTGGTGTACCTACAGACCATCTTCGACAACACAT
 CCGTGGTGTGCCCTCCCAGCAGGATGCAGCGATAGTTGGTGTGTGAGGCTCCTATCTGTGCTGATTGC
 TGCTGTACCATGGACCTGGCGGGCCGAAAAGTTCTGCTCTATGTGTGAGCATCCGTCATGTTTGTGCC
 AACCTGACACTGGGGCTCTACGTCCAGTTGTGCCAAGGCCTTGACCCCAACAGCACTGTGGAGATCG
 TGACCTGGGGGACACAGCCTTCAACTATCTTACCCTGATACCCCTGCTGGCCACCATCTTCCATTAT
 GGGCTATGCCATGGGCTGGGGTCCCATCACCTGGCTCCTCATGTCTGAGGTTCTGCCCTTGGCGTCCCGT
 GGTGTGGCCTCAGGGCTCTGCGTGTGGTGTGAGGCTCACAGCCTTCGTCCTACTAACTACTTCTGCT
 TGGCAGTGAATGCCTTCGGCCTCCAGGTGCCTTTCTTCTTCTTCTCGGCCATCTGCCTGCTCAGCTTGT
 CTTACAGGCTGCTGTGTGCTGAGACCAGGGCCGCTCGCTGGAGCAGATCGAGGCCTTCTCCACACT
 CGCAGGATGTCCTTCAGGCC

ACGCGTACGCGGCCGCTCGAG – GFP Tag – GTTTAA

Protein Sequence:

>MG219710 representing NM_172659
 Red=Cloning site Green=Tags(s)

MQEPLLRTEGLDYDTFPEVPATPGERERAGALKNRRVFLATFAAVLGNFSFGYALVYTSPIPELKLSSD
 PALHLDKIQASWFGSVFTLAAAAGGLSAMPLNDLLGRKLSIMFSAVPSAIGYAIMAGARGLWMLLLGRML
 TGFAGGLTAACIPVYVSEIAPPDVRGALGATPQLMAVFGSLSLYALGLLLPWRWLAVAGEGPVLIIMILL
 SFMPNSPRFLLSKSRDEEALQALTWLRADSEVHWEFEQIQDNVRRQSSRVSWAEAREPRVYRPVLIIVLM
 RFLQQLTGITPILVYLQTFDNTSVVLPQQDAIVGAVRLLSVLIAAVTMDLAGRKVLLYVSASVMFAA
 NLTLGLYQFVPRPLTPNSTVEIVTLGDTAFNYLTLIPLLATMLFIMGYAMGWGPITWLLMSEVLPLRAR
 GVASGLCVLVSFLTAFVL TNYFLLAVNAFGLQVPPFFFSIACLLSLLFTGCCVPETRGRSLEQIEAFFHT
 RRMSFRP

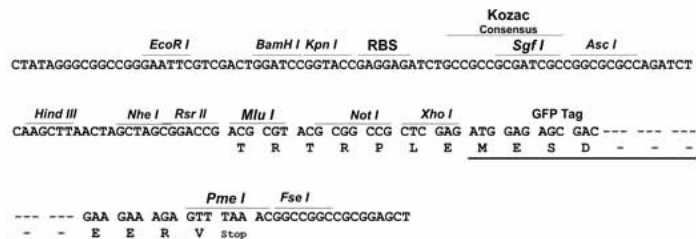
TRTRPLE – GFP Tag – V

Restriction Sites:

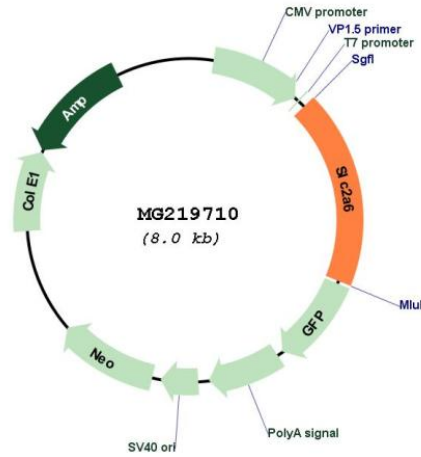
Sgfl-Mlul

Cloning Scheme:

Cloning sites used for ORF Shutting:



Plasmid Map:



ACCN: NM_172659

ORF Size: 1491 bp

OTI Disclaimer: The molecular sequence of this clone aligns with the gene accession number as a point of reference only. However, individual transcript sequences of the same gene can differ through naturally occurring variations (e.g. polymorphisms), each with its own valid existence. This clone is substantially in agreement with the reference, but a complete review of all prevailing variants is recommended prior to use. [More info](#)

OTI Annotation: This clone was engineered to express the complete ORF with an expression tag. Expression varies depending on the nature of the gene.

Components: The ORF clone is ion-exchange column purified and shipped in a 2D barcoded Matrix tube containing 10ug of transfection-ready, dried plasmid DNA (reconstitute with 100 ul of water).

Reconstitution Method:

1. Centrifuge at 5,000xg for 5min.
2. Carefully open the tube and add 100ul of sterile water to dissolve the DNA.
3. Close the tube and incubate for 10 minutes at room temperature.
4. Briefly vortex the tube and then do a quick spin (less than 5000xg) to concentrate the liquid at the bottom.
5. Store the suspended plasmid at -20°C. The DNA is stable for at least one year from date of shipping when stored at -20°C.

RefSeq: [NM_172659.2](#), [NP_766247.2](#)

RefSeq Size: 2136 bp

RefSeq ORF: 1494 bp

Locus ID: 227659

UniProt ID: [Q3UDF0](#)

Cytogenetics: 2 A3

Gene Summary: Probable sugar transporter that acts as a regulator of glycolysis in macrophages (PubMed:30431159). Does not transport glucose (By similarity).[UniProtKB/Swiss-Prot Function]