

## Product datasheet for **MG219642**

### Zfp600 (NM\_001177545) Mouse Tagged ORF Clone

#### Product data:

Product Type:	Expression Plasmids
Product Name:	Zfp600 (NM_001177545) Mouse Tagged ORF Clone
Tag:	TurboGFP
Symbol:	Zfp600
Synonyms:	Gm13164; OTTMUSG00000010694
Mammalian Cell Selection:	Neomycin
Vector:	pCMV6-AC-GFP (PS100010)
E. coli Selection:	Ampicillin (100 ug/mL)



[View online »](#)

**ORF Nucleotide Sequence:**

>MG219642 representing NM\_001177545, **codon optimized**.  
**Due to the complexity of NM\_001177545, the ORF clone is codon optimized for mammalian Expression.**  
**The nucleotide sequence differs from the reference sequence, yet the amino acid sequence remains identical.**

Red=Cloning site Blue=ORF Green=Tags(s)

TTTTGTAATACGACTCACTATAGGGCGCCGGGAATTCGTCGACTGGATCCGGTACCGAGGAGATCTGCC  
 GCC**CGCATCGC**C

ATGTTTGCGCCACACCAGGAGTCTGGCCGAAGGACTACAAAACGAATGAGTGCCTCTCTGGAGAACACTG  
 CTCAATGCCTCCTACCTTCAAGGATGTTTTCTTGACTTCAGCTCAGAGGAGTGGGAGTGCCTCAACTT  
 CGCCCAACGAACTCTGTACATGGATGTGATGCTGGAGAATTATAAACCTGCTGTTTCGTCGAAAACCA  
 TGTATCTGTGGTAATTATGAGAAAGAAAAGGTGCTGGAGCAGGAGACTCAGCATATTGTGAACGAGCAG  
 GACATAATAGAAAGAAGTCTTCCAAATGTAAACGAGGTACGCAATGTTATCCACGAAAGCTCTGAGTCAAC  
 ACCATATAACACCAATCACCGAGATGCCACTCTGCAAAGCTCCAAGTGAAGCGGCACAAGACAGGCACC  
 ACGAAAGGGGTGTGCACTTATAAGGACTGTGTGAATTGCCTGAAGGGATCCAGTATTATCAGTCTCAACC  
 AAGGCACCCACATCGAAAAGAAGGAACAATAGAAATAAGAACCTGGACGAGGTGCTCGTTAGTCGACA  
 GAACAACAGCGAAATGAACACTTACACATGCGGGGAATTCGATAAATGCTTCACACAGTCAGACAACCTT  
 CAGTCTCAACAGAGAATTTACCTGGCAAAAAGAGCTATATCTACAGCGAAAGCGATAAAGTCTTACCC  
 AGCCTAGCCATCTTTCCATCCACCACACTATCCACAGCGGTGAAAAGCCATACAAGTGCAGCGAGTGTGA  
 TAAGTGCCTTTACAGACAAGTCACTCTGCGCAACATCAGAGAATCCACACCGGCGAGAAACCGTAAAG  
 TGCTCCGAGTGTGATAAGTGTTTACCAGCAAGGTACCCTGCGCAAGCATCAGCGAATCCACACCGGCG  
 AAAAGCCTTACAATGTAAACGAATGTGATAAATGCTTTACTGATAAGGGTCACTGAGGGTTACCAGAG  
 GATTACACAGGAGAGAAGCCTTATAAGTGTTCAGAATGCGACAAGTGTTTTACACAGCCAAAGCCATCTG  
 TCCATCCACAGGAGGATCCACTCCGGTGAAGCCTTACAAGTGTTCGAATGCGACAAGTGTTCACAG  
 ACAAGTGCACATTGAGGAAACATCAGCGGATCCATACGGGAGAGAAACCTTATAAGTGCAGTGAATGTGA  
 TAAATGCTTACCAGAGAAGTTCCTTTGCGAAAGCATCAACGCATCCACACAGGGGAAAAACCTTATAAG  
 TGTAATGAATGTGATAAGTGTTTACAGACAAGGGTAGTTTGAGGGTCCACCAACGAATCCACACCGGCG  
 AGAAGCCTTACAAGTGCAGTGTGACAAATGCTTTACTAAGCCATCTCATCTCAGTATCCACCGCCG  
 AATTCCTCTGGCGAAAAGCCATACAAGTCTCTGAATGTGATAAATGTTTCACTCAACCTTCCCCACTG  
 TCTATCCATCGCCGATCCATAGCGGGGAAAAACCATACAAGTGTTCGAGTGTGATAAATGTTTACCGG  
 ATAAAGGTAGCCTTAGAGTGCACCAGCGCATTACATCGGAGAGAAACCATATAAATGTAGCGAGTGCGA  
 TAAGTGTTTTACTCAGCCATCCCATCTGTCTATTCACTGCCGGATCCATTCCGGAGAGAAACCTTATAAG  
 TGCAGTGAATGTGACAAATGCTTACAGACAAGAGCAGCTCCGCGTTCATCAGCGGATCCATACAGGTG  
 AGAAACCATATCAGTGTCTGAATGCGACAAATGTTTACAGATAAAGGCAGTCTGAGGGTTCATCACCG  
 GATACACGCCGGCGAGAAGCCTTACAAGTGTCTCAGAGTGCAGTAAAGTGTCTTACTGACAAGGGTATCTT  
 AGAGTGCATTATCGGATCCACGCCGAGAAAAGCCATACAATGTTTCAAGTGCAGATAAATGCTTCACTC  
 ATAAGGGCTCCCTGAGGGTGCACCACCGAATTCATACTGGTAAAAACCATATAAATGTTCTGAATGTGA  
 CAAGTGTCTTACAGGAAGAGCCATCTCAGCATTATCAGCGCATCCATACAGGTGAGAAGCTGTACAAA  
 TGCAACGAGTGCACAAGTGTCTTAGTGATAAGCATAGCCTCCGCGCCCAACGAATACACACTGGAG  
 AGACACCTACAAGTGAACGAATGTGACAAGTGTTCACA

**ACGCGT**ACGCGGCCGCTCGAG – GFP Tag – GTTTAA

**Protein Sequence:** >MG219642 representing NM\_001177545  
Red=Cloning site Green=Tags(s)

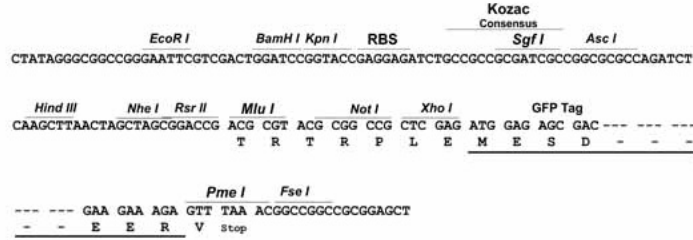
MFAPHQESGRRTTKRMSASLENTAQCLLTFKDVFLDFSSEEWECLNFAQRTL YMDVMLENYNLLFVENH  
CICGNYEKEKVLQEQETQHIVNEHGHNRKSSKNEVRNVIHESSESTPYNTNHRDATLQSSNLKRHKGT  
TKGVCTYKDCVNCLKGSSIIISLNQGTHIEKKEHNRNKNLDEVLSRQNNSEMNTYTCGEFDKCFQSDNL  
QSQQRIYPGKKSIIYSESDKCFQPSHLSIHHTIHSGEKPYKCSECDKCFDKCTLRKHQRIHTGEKPYK  
CSECDKCFDKCTLRKHQRIHTGEKPYKCNECDKCFDKGSLRVHQRIHTGEKPYKCSECDKCFQPSHL  
SIHRRHSGEKPYKCSECDKCFDKCTLRKHQRIHTGEKPYKCSECDKCFTEKFTLRKHQRIHTGEKPYK  
CNECDKCFDKGSLRVHQRIHTGEKPYKCSECDKCFTKPSHLSIHRRHSGEKPYKCSECDKCFQPSPL  
SIHRRHSGEKPYKCSECDKCFDKGSLRVHQRIHIGEKPYKCSECDKCFQPSHLSIHCRHSGEKPYK  
CSECDKCFDKSSLRVHQRIHTGEKPYQCSECDKCFDKGSLRVHHRHAGEKPYKCSECGKCFDKGYL  
RVHYRIHAGEKPYKCSECDKCFTHKGSLRVHHRHAGEKPYKCSECDKCFTRKSHLSIHQRIHTGEKLYK  
CNECDKCFSDKHSLRRHQRIHTGETPYKCNECDKCF

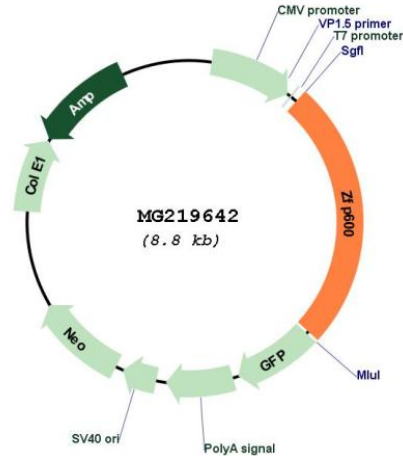
TRTRPLE - GFP Tag - V

**Restriction Sites:** Sgfl-Mlul

Cloning Scheme:

Cloning sites used for ORF Shutting:



**Plasmid Map:**


**ACCN:** NM\_001177545

**ORF Size:** 2211 bp

**OTI Disclaimer:** The molecular sequence of this clone aligns with the gene accession number as a point of reference only. However, individual transcript sequences of the same gene can differ through naturally occurring variations (e.g. polymorphisms), each with its own valid existence. This clone is substantially in agreement with the reference, but a complete review of all prevailing variants is recommended prior to use. [More info](#)

**OTI Annotation:** This clone was engineered to express the complete ORF with an expression tag. Expression varies depending on the nature of the gene.

**Components:** The ORF clone is ion-exchange column purified and shipped in a 2D barcoded Matrix tube containing 10ug of transfection-ready, dried plasmid DNA (reconstitute with 100 ul of water).

**Reconstitution Method:**

1. Centrifuge at 5,000xg for 5min.
2. Carefully open the tube and add 100ul of sterile water to dissolve the DNA.
3. Close the tube and incubate for 10 minutes at room temperature.
4. Briefly vortex the tube and then do a quick spin (less than 5000xg) to concentrate the liquid at the bottom.
5. Store the suspended plasmid at -20°C. The DNA is stable for at least one year from date of shipping when stored at -20°C.

**RefSeq:** [NM\\_001177545.1](#)

**RefSeq Size:** 4155 bp

**RefSeq ORF:** 2214 bp

**Locus ID:** 667666

**Cytogenetics:** 4