

Product datasheet for **MG219628**

Zfp964 (NM_001177527) Mouse Tagged ORF Clone

Product data:

Product Type:	Expression Plasmids
Product Name:	Zfp964 (NM_001177527) Mouse Tagged ORF Clone
Tag:	TurboGFP
Symbol:	Zfp964
Synonyms:	4732490P12; EG636741; Gm7187
Mammalian Cell Selection:	Neomycin
Vector:	pCMV6-AC-GFP (PS100010)
E. coli Selection:	Ampicillin (100 ug/mL)



[View online »](#)

ORF Nucleotide Sequence:

>MG219628 representing NM_001177527, **codon optimized**.
Due to the complexity of NM_001177527, the ORF clone is codon optimized for mammalian Expression.
The nucleotide sequence differs from the reference sequence, yet the amino acid sequence remains identical.

Red=Cloning site Blue=ORF Green=Tags(s)

TTTTGTAATACGACTCACTATAGGGCGCCGGAATTCGTCGACTGGATCCGGTACCGAGGAGATCTGCC
 GCC**GCGATCGCC**

ATGGCATCTGTATCTTTTCGAGGACGTGGCAGTTCACCTTCACACAGGATGAGTGGGCTCTCCTGGACTCCA
 GCCAGAAGTCTGTACCGAGACGTCATGCTGGAGACATGTCGCTCCCTGGCTACTATCGGCTATAAATG
 GGAGGACCAGAACCTTGAGGACCACTGCATTAATCCAGGTAGGAACCTCCGGAGTTACATGTTTCAGACC
 TTCTGTGAAAACGAGGGCGACGATCAGGGCGGTGAGAACCTGCCTTGAAGCCCAACCTCTCTATGAATA
 TGCCTGTTCACCTGGCCTGACACCATGGGATCACTCAATGTGGGAAAAAGCCAGTCCAAGCTACTCCAG
 CAGCCGCCACACAACACCTCACTCCCAATGCACCGCCACGAACAAGAAAAATATGTAACAAAGCAGTAC
 AATAGCGATTCCTCAGGACATTCAGAGATACATGAGGACTCACGTCGTCATGGTCCATGTGAGTGTG
 AGGTCTGTTTGAAGTATTTCCGGTTTTCCCGGCACTCTCGAGATCCATCAAGAGACTCAGTCCGAAAAACA
 TCCTACCAATATAAAGAATACGGGAAAAACAAGTGTGGATATCAGCAGCCTGTGCACGCACGGGGCGCT
 CAGGCAGTTGGCAAGGGGTACGAGTGTAAACCAGTGGGAAAAGCTCTGCCTCATACTCCTCTCTGAGAC
 GACACGAAACGGATACACACTGAAAAGAAGCCATACAAATGTAAGCAGTGGGTAAGGCTTTTCGGTATCA
 TAGTTACCTGCATCTCCACGCGGATCCACACAGGTGAAAAGCCCTATGAATGCAAGCGGTGTGGAAAG
 GCTTTTATTTTCCAGGTGCCCTTCAGGTGCATGAGAAAATCCATACTGGCGAGAAGCGCCACGAGTGCA
 AGCACTGTGGCAAGGCATTCCGCGGACATAGTGACCTTCAGGTACACGAGAAGATTACATACAGGTAAAA
 ACCTTATGTTTGAAGCAGTGGGGAGGGCTTTCCGCCTGAATAGCCACCGACAACGGCAGCAACAGACT
 CATAAGAAAGACAGGCCATTTATTTGCAAACAATGTGGAAGGAGCTTGAATGCTACAGCAACCTGGAGC
 TCCACGAAAAGATCCATACAGGAGATAGGCCTTTGTTTGCAGTGTGGCAAAGCATTGGCTGCTA
 CTCCAATCTTTCAGCTGCACGAGAAGATCCATACCGGTGATAGACCTTTTCGTGTCAAAGAGTGGGCAAG
 GCCTTCATCTGTCATGGCCACCTGCAAAGGCACGAGACAACGCATACAGGAGAGAAGCCATATGGCTGTA
 AACAGTGTGGAAAGCGTCTCTAGAACTCCACCTGCACGACATGAGCGAACGCACCGCCAGATGAG
 TACTTGCCCTAGAAAG

ACGCGTACGCGGCCGCTCGAG – GFP Tag – GTTTAA

Protein Sequence:

>MG219628 representing NM_001177527
 Red=Cloning site Green=Tags(s)

MASVSFEDVAVHFTQDEWALLDSSQKSLYRDVMLETCRSLATIGYKWEDQNLEDHCINPGRNLRSYMFQT
 FCENEGDDQGGENLPWKPNLSMNMRCSTGLTPWDHSMWGKASPSYSSSRHTTPHSQCTAHEQEKYVTKQY
 NSDSLRTFQRYMRTHVNGPCECEVCLKYFGPGTLEIHQETQSENPNPYQYKEYGKTSVDISSLCTHGGGA
 QAVGKGYECNQCGKALSSYSSLRHERIHTEKKPYKCKQCGKAFRYHSLHLHERIHTGEKPYECKRCGK
 AFIFPGALQVHEKIHTGEKRHECKHCGKAFRRHSDLQVHEKIHTGEKPYVCKQCGRAFRLNSHRQRHEQT
 HTEDRPFICKQCGRSFECYSNLELHEKIHTGDRPFVCTECGKAFGCYSNLQLHEKIHTGDRPFVCKECKG
 AFICHGHLQRHETHTTGEKPYGCKQCGKAFSRNSHLQRHERHTRQMSTCPRK

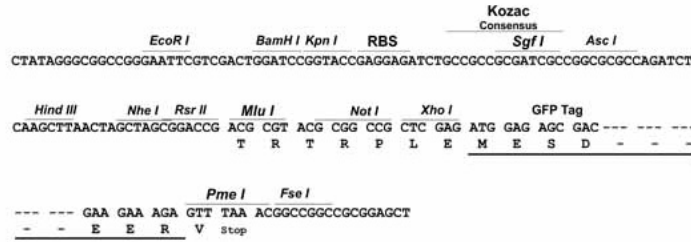
TRTRPLE – GFP Tag – V

Restriction Sites:

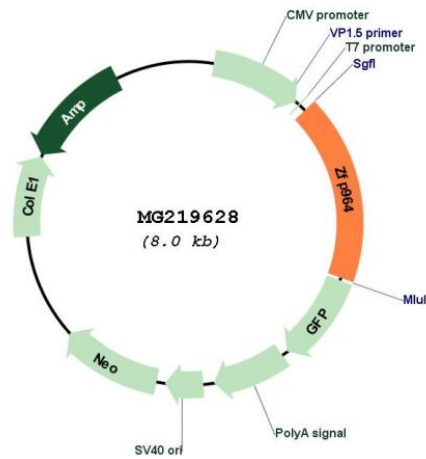
Sgfl-MluI

Cloning Scheme:

Cloning sites used for ORF Shutting:



Plasmid Map:



ACCN:

NM_001177527

ORF Size:	1416 bp
OTI Disclaimer:	The molecular sequence of this clone aligns with the gene accession number as a point of reference only. However, individual transcript sequences of the same gene can differ through naturally occurring variations (e.g. polymorphisms), each with its own valid existence. This clone is substantially in agreement with the reference, but a complete review of all prevailing variants is recommended prior to use. More info
OTI Annotation:	This clone was engineered to express the complete ORF with an expression tag. Expression varies depending on the nature of the gene.
Components:	The ORF clone is ion-exchange column purified and shipped in a 2D barcoded Matrix tube containing 10ug of transfection-ready, dried plasmid DNA (reconstitute with 100 ul of water).
Reconstitution Method:	<ol style="list-style-type: none">1. Centrifuge at 5,000xg for 5min.2. Carefully open the tube and add 100ul of sterile water to dissolve the DNA.3. Close the tube and incubate for 10 minutes at room temperature.4. Briefly vortex the tube and then do a quick spin (less than 5000xg) to concentrate the liquid at the bottom.5. Store the suspended plasmid at -20°C. The DNA is stable for at least one year from date of shipping when stored at -20°C.
RefSeq:	NM_001177527.1 , NP_001170998.1
RefSeq Size:	1740 bp
RefSeq ORF:	1419 bp
Locus ID:	636741
Cytogenetics:	8 B3.3