

Product datasheet for **MG219619**

Npffr1 (NM_001177511) Mouse Tagged ORF Clone

Product data:

Product Type: Expression Plasmids
Product Name: Npffr1 (NM_001177511) Mouse Tagged ORF Clone
Tag: TurboGFP
Symbol: Npffr1
Synonyms: Gm236; Gpr147; NPFF1; NPFF1R; OT7T022
Mammalian Cell Selection: Neomycin
Vector: pCMV6-AC-GFP (PS100010)
E. coli Selection: Ampicillin (100 ug/mL)
ORF Nucleotide Sequence: >MG219619 representing NM_001177511
Red=Cloning site Blue=ORF Green=Tags(s)

TTTTGTAATACGACTCACTATAGGGCGCCGGGAATTCGTCGACTGGATCCGGTACCGAGGAGATCTGCC
GCC**CGATCGCC**

ATGGAGGCGGAACCCCTCCAGCCTCCCAACGGCAGCTGGCCCCGAGTCTGAACGAGAGTGATGCTGAAA
CCGCCCGGTGGCCAGCCTCACCTTCTCTTCTACTACCAGCACTCTCCGGTGGCCGCATGTTTCAT
CGCCGCTACGCGCTCATCTTCTCTCTGCATGGTGGGAACACCCTGGTCTGCTTCATCGTGCTTAAG
AACCGGCACATGCGCACTGTACCAACATGTTTCATCTCAACCTGGCCGTAGCGACCTGCTGGTGGCA
TCTTCTGCATGCCACAACCCTCGTGGACAACCTATCACCGGTTGGCCTTTTGACAATGCCACATGCAA
GATGAGCGGCTTGGTACAGGGCATGTCCGTGTCTGCGTCCGTTTTACACTGGTGGCCATTGCCGTGGAG
AGGTTCCGCTGCATCGTACACCCTTCCGTGAGAAGCTGACCCTCCGGAAGGCGCTGCTCACCATAGCGG
TGATCTGGGCGCTGGCGCTGCTCATCATGTGTCCCTCGGCGGTCACTCTGACCGTACGCGAGAGGAGCA
TCACTTATGCTGGATGCTCGCAACCGCTCCTACCCTCTACTCGTGTGGGAGGCTGGCCCGAGAAG
GGCATGCGCAAGGTCTACACCGCGTGTCTTCGCGCACATCTATCTGGCGCCGTGGCGCTCATCGTGG
TGATGTACGCGCATCGCGCAAGCTGTGCCAGGCCCGGTCCAGCGCGCAGCGGAGGAGGCGGT
GGCCGAGGGTGGCCGCGCTCGCGCCGAGGGCCCGGTGGTGCATATGCTGGTTCATGGTGGCGCTCTTC
TTCACCTTGTCTGGCTGCCACTCTGGTGTCTGCTCATCGACTACGGGAGCTGAGCGAGCTGC
AGCTGCACCTTGCTGTCCGTCTACGCTTCCCGTTGGCACACTGGCTGGCCTTCTCCACAGCAGCGCAA
CCCCATTACTACGGCTACTTCAACGAGAACTTCCGCGCGGCTTCCAGGCTGCCTTCCGGGCACAGCTC
TGCTGGCTTCCCTGGCCGCCACAAGCAAGCCTACTCCGAGCGGCTGGCCGCTCCTGCGCAGGCGGG
TGGTGGTGGACGTGCAACCCAGCGACTCAGGGCTGCCATCGGAGTCTGGCCCCAGCAGTGGGGTCCCAGG
GCCTAACCGGCTGCCATTGCGCAATGGCGTGTGGCCACCAGGATGGCCGAGGGAAGGGCCTGGTGC
AACCATGCCCTCACTATCCAGCCTGGAACATT

ACGCGTACGCGCGGCTCGAG - GFP Tag - GTTTAA



[View online >](#)

Protein Sequence: >MG219619 representing NM_001177511
 Red=Cloning site Green=Tags(s)

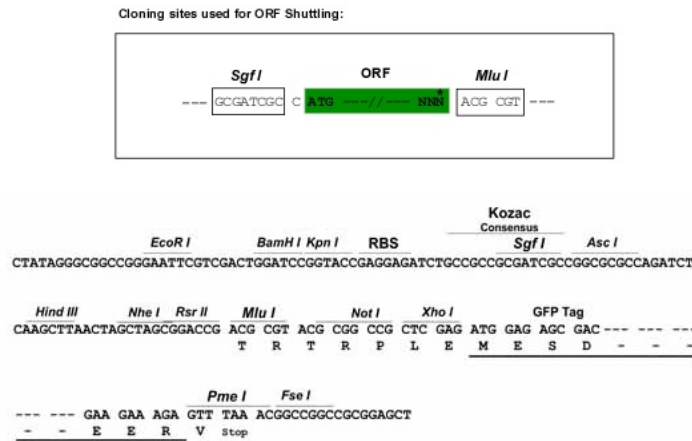
```
MEAEPSQPNGSWPPSLNESDAETAPVASLTFSSYYQHSSPVAAMFIAAYALIFLLCMVGNTLVCFIVLK
NRHMRTVTNMFILNLAVSDLLVGIFCMPTTLVDNLITGWPFDNATCKMGLVQGMSVSASVFTLVIAIVE
RFRCIVHPFREKLTLRKALLTIAVIWALALLIMCPSAVTLTVTREEHHFMLDARNRSYPLYSCWEAWPEK
GMRKVYTAFLFAHIYLAPLALIVVYARIARKLCQAPGPARDAAEEAVAEGGRASRRRRARVVHMLVMVALF
FTLSWLPLWVLLLLIDYGELSELQLHLLSVYAFPLAHWLAFFHSSANPIIYGYNENFRRGFQAAFRAQL
CWL PWA AHK QAY SERPGRLLRRRVVVDVQPSDGLPSESGPSSGVPGNRLPLRNGRVAHQDGPREGPGC
NHMPLTIPAWNI
```

TRTRPLE - GFP Tag - V

Chromatograms: https://cdn.origene.com/chromatograms/ja2183_f03.zip

Restriction Sites: SgfI-MluI

Cloning Scheme:



ACCN: NM_001177511

ORF Size: 1296 bp

OTI Disclaimer: Due to the inherent nature of this plasmid, standard methods to replicate additional amounts of DNA in E. coli are highly likely to result in mutations and/or rearrangements. Therefore, OriGene does not guarantee the capability to replicate this plasmid DNA. Additional amounts of DNA can be purchased from OriGene with batch-specific, full-sequence verification at a reduced cost. Please contact our customer care team at custsupport@origene.com or by calling 301.340.3188 option 3 for pricing and delivery.

The molecular sequence of this clone aligns with the gene accession number as a point of reference only. However, individual transcript sequences of the same gene can differ through naturally occurring variations (e.g. polymorphisms), each with its own valid existence. This clone is substantially in agreement with the reference, but a complete review of all prevailing variants is recommended prior to use. [More info](#)

OTI Annotation: This clone was engineered to express the complete ORF with an expression tag. Expression varies depending on the nature of the gene.

Components: The ORF clone is ion-exchange column purified and shipped in a 2D barcoded Matrix tube containing 10ug of transfection-ready, dried plasmid DNA (reconstitute with 100 ul of water).

Reconstitution Method:

1. Centrifuge at 5,000xg for 5min.
2. Carefully open the tube and add 100ul of sterile water to dissolve the DNA.
3. Close the tube and incubate for 10 minutes at room temperature.
4. Briefly vortex the tube and then do a quick spin (less than 5000xg) to concentrate the liquid at the bottom.
5. Store the suspended plasmid at -20°C. The DNA is stable for at least one year from date of shipping when stored at -20°C.

RefSeq: [NM_001177511.2](#)

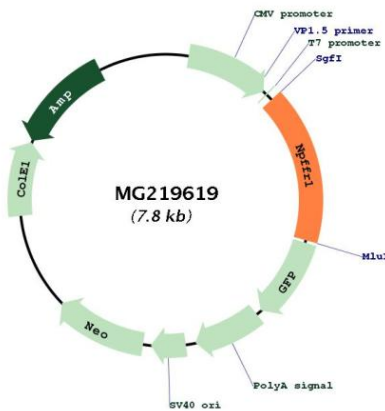
RefSeq Size: 1307 bp

RefSeq ORF: 1299 bp

Locus ID: 237362

Cytogenetics: 10 B4

Product images:



Circular map for MG219619