

Product datasheet for **MG219540**

Abca8a (NM_153145) Mouse Tagged ORF Clone

Product data:

Product Type:	Expression Plasmids
Product Name:	Abca8a (NM_153145) Mouse Tagged ORF Clone
Tag:	TurboGFP
Symbol:	Abca8a
Mammalian Cell Selection:	Neomycin
Vector:	pCMV6-AC-GFP (PS100010)
E. coli Selection:	Ampicillin (100 ug/mL)
ORF Nucleotide Sequence:	>MG219540 representing NM_153145 Red=Cloning site Blue=ORF Green=Tags(s)

TTTTGTAATACGACTCACTATAGGGCGGCCGGGAATTCGTCGACTGGATCCGGTACCGAGGAGATCTGCC
GCC**CGATCGCC**

ATGGTTAAGAGAGAGATAAATGTGTGCCAACAAACGTGGGCCTTATTGTGCAAGAATCTTCTCAGAAAAA
AGAGACTGAAAAGAGATACATTTTTGGAATTCCTGTACACAGCACTTATACTACTTAGTTAATTTTTATT
TCTTCAATTGCATGAAGTTTATGATTTTTCGTCACTGCCTGATGTGGACCTGGGACGCATTGATTCATTT
AATGACTCCACCTTTATGATTGTGTACACACCTATCACCCCAACACTCAGAGGATAATGGATAGAGTCT
CTTTGGTCTCTTACATGACAGGAAGAAAAATTTGGCTTCTCCGAATGAAGAAAAATATGACAGAACTCAT
TTCAATGCGTTTTAGTGATGTAGTGGGGTTCATATTCACCAACGCTTACTCCTACAACCTGAAGTTCATA
AAAGGAGCAAGGATCCCCACCATAAAGGAGCATCAGGACCACACAGCTCATTGTCATTCCATGAGAGAGA
TCATTTATTGTGGCCTTTCAGAATTCTGGAGAGATGGGTTTGTGGCTCTTCAAGCTGCCATTAACGCTGC
CATCATAGAAGTCACAACAAATCACTCAGTGATGGAAGAGATGATGTCACCTACCGGAAAAATACATCAAG
ATAGATTCTTTCGTTGGCAAGAAGGGACAACGACAGACTGCTTCTTTTTTTCTGTATCATTGTTTTCT
CCCCACTTACCTATTATCTCAGCTGGTGTACAAGAGAAAGGAAAAAGATGAAGGGCTTGATGGCAGT
GATGGGCCTTCGGATTACGATTTCTGGCTGCTGGGTTTGTCTATGGTGCATTGTCTTCGTTGTG
ACCCTTCTCTCGACAACCTATTGTAACACTGGTCCAATTTGTCTTTTTGACTGGATTTATGGTGATCTTCA
GTCTCTTTTTCTTCTATGGCTTATCTCTGATCTCTTTGTCTTTCTTGATGAGTGTTTACTAAAGAAGTC
TTTTCTCACTGACCTGGTGGTGTCTTGTCTCACTGTTTCTGTGGAAGTCTTGGATTACAGCATTGTAC
AGATACCTTCTGTATCCTTGGAGTGGCTTCTAAGTTTGTCTCAGTCCCTTTGCTTTTATGCTTGGAAATGG
TCCAGCTCTTACGTTTAGATTATGATGTGAATCAAATGCAGACCCCATGGGCAACCCAAATGAAGTCAT
TGGCACAATCTTCATGCTGTTCTTTGATGGTGTCTTCTACCTGCTCTTGACATTTACTTTGAGAAGGTT
TTACCAAGTGAATATGGACGTCGACACCCACCTGTGTTTTCTGAAGTCTCATTTTGGTCAGGACAAA
ATCCAGCCAATCGACTGCCCTTGACAATGAAACAGACTATGAGTTTTCTGATGACTCTTTTGAACCTGT
GTCTATGGAATTCATGGGAAGGAAGCCATCAGAATCAGAAATCTTACAAAAGACTACATACAAAAGTCT
AAGCGCACAGAAGCTTTGAAAGATCTGACACTGGATGTATATAAAGGCCAGATTACTGCGATCCTTGGTC
ACAGTGGAGCTGGGAAATCAACACTGTTAAATGCTCCTGAGTGGGTTGTGTGCCACCAAAGGTTGGT



[View online »](#)

CACTATCCATAATAACAACTCTCAGAAATGACTGACTTGAAAAATATCAGCAAGCTCACTGGAGTTTGT
 CCACAATGCAATGTGCAATTTGACTTCCTCACTGTAAGAGAAAATCTTAGGCTATTTGCTAAAAATAAAAG
 GGATTCAGGCCACGAAGTGGATAACGAGGTACAAAGAGTTTTGCTGGAATTGGACATGAAAAATACTCA
 GAATATTTCTTGTCAAACCTAAGCGCGGACAGAAGAGAAAAGCTGACGTTTGAATCGCCATTTTAGGA
 GACCCTCAGATTTTCTACTGGATGAGCCACCCTGGCTGGATCCCTTTTCAAGGCACCGGTGTGGA
 ATTTCTGAAGGAGCGCAGAGCAGACCCTGTGGTCTCTCAGCACGCAGTTCATGGATGAGGCTGACAT
 CCTGGCTGATAGGAAAGTTCATCTCAAGGGGAAGCTGAAGTGTGCAGGATCTCTTTGTTTCTGAAG
 AAGAAATGGGGATTGGTTATCACTTAAGCTTGCAGCTGAGTGAACGTGTGTGCATGAAAGAATAACAT
 CACTTGTCAAACAGCACATCCCCGATTCCAAGTTGTGAGCAGAAAAGCGAAGGAAAAGTACTGACTACATATT
 ACCCTGGAAAGAACAACAAGTTCCAGATCTTATAGGGATCTCGAGAGAAGTCCAGACCTGGGAATT
 GAGAACTATGGCGTTTCTATAACAACACTGACTGAGGTCTTTCTGAAACTGGAAGGAAAATCATCTATTG
 ACCAATCAGATATTGGTATGACAGAAGATGTACAAGCTGGAGGGCAAGGAGCCAGAGAGGTTTGTCTGA
 AGTAGAACAACTGTCTCTTTACTTAATGGGAGGTGAAGATGAAGGGGGCATGGCTCTATGGTGGCAG
 CAACTCTGTGCAGTGACCAGGCTTCGCTCTTGAAGTTAAAGCATGAAAGGAAAATCCATCGTTATTCTGA
 TTCTGGTTTTGGGATTGGACTTCTGCATATTTTGTGAGCAAAATTTTACAGGATGGTCCGTCAAAGTGA
 CTACTGTTGGGAGCTTGCCCTCATATGTACTTCTCACACCAGGCCAGCAACCAGCCGCCCTCAGG
 AACTTACTGATCGTCAACAAAACAGGAGCAAAAATCGATGACTTTATACATTCAGTGAACAACAGAAACA
 TAGCTTTGGAAGTTGATGCCTTTGGGACTAGAAAATGGCACCGAGGACAGTCAAGTAAATGGAGCTATCAT
 CCTATCAGGTGACGAGAAGAATTACAACCTTACCCTGGCATGCAACACCAAGAGGCTGAATTGTTTTCCG
 GTTCTGGTGGATATTGTGAGTAATGGGCTACTTGGACTGTTCCGACCATCAGCACACATTCAAACTGACC
 GCAGCACATTTCTGAGGAAAATGACCACAGAAAATTTGATTATTTGGCTATTTCTTCTGTGGTACT
 TCTGATGGCCTGTGTTCTCTTATATTTCCATGACCAGCATTGATGACTATAAGAACAGAGCTCAGTTC
 CAGCTGTGGATTTCAAGGCTCTCCCCACTGCATACTGTTTCCGGCAGGCTCTGTTTGAAGTTCCAGT
 ACTGTGCACTCATTTTGTCTATATTCATTGCACTTCTATGCCTCGGCCCTCCAGAGAGTAAGTTCACAGT
 TGGAGATCTGTTTATTCAGATTCTATGTTGGTGGCTATGCCATGTCAGTTATTTTTCATGACTTATGTG
 ATTTTCTTATTTATCGCAAGGGGAGAAAAATAGTGGCCTTTGGTCACTTTGCTTCTATATTGTCTCTT
 TCTTCTCTATGTGTTTTATGCTTATTGATTACTTTAGAGATATCTCACTGTTTGTTTTAAATTGCCCTGGT
 TCCACCTGCTACATTGGGAGGCTGCACATTATTACATTTTGAAGATCGTGAATTTTCTGAAATAATTTT
 GAGCCAGAAAGGGAGTATTCCTATCTGTTTTTCTAGCTCCTCTTCTTCAATTTTCCATCTTCGTAGTTA
 TTCTCCGATGATGGAAGGAAGTTTGAATGAAAACAATGAGAACGGATCCTGTCTTTAGAAATTTCTCC
 AAGAAGCGATCGTGTATTTAACAATCCAGAAGACCAGATGGGGAAGATGAAGATGTGAGTCAGGAAAGA
 GTGTGGACAGCAATGCTTTGACTTCCGCCGACTTCCAGGAGAAGCCAGCCATCATTGCCAGCTGCCTTC
 GCAAGGAGTACAAGGAAAGAAGAAATGCTTTGTTCTTAAAGAGCAAGAAGAAGATTGCCACAAGAAACAT
 CTCTTTTTGCGTTTCAAAAAGGTGAGGTTGTAGGATTACTGGGACACAATGGAGCTGGTAAAAGTACATCC
 ATTAAGATGATAACTGGAGAAAACCAAGCCAAGCGCCGGACAGGTGCTGCTGAAGGGGAGCAGCACAGGGG
 ACACCCCGGGTTCCTGGGGTACTGTCTCAGGAAAATGCTCTGTGGCTCAACCTGACAGTGAGGGAACA
 CCTGGAGATATTTGCAGCCATAAAGGGGATGAGAAAAGTACGCGAAGCTGGCCATCGAAAGGTTGGCA
 GATGCGCTCAAGCTGCAGGACCAGTGAAGTCTCTGTGAAGACGCTGTGAGGGAGTGAAGAGAAAGC
 TGTGCTTTGTGCTGAGCATCTGGGGAACCTTCTGTGGTACTTCTGGATGAGCCATCCACCGGATGGA
 CCCCAGGGGCAGCAGCAAAATGTGGCAGGCTATCCAGGCCACCTTTTCAAACACAGAACGGGGCGCCCTC
 CTGACCACCCATTACATGGCAGAGGCTGAGGCTGTGTGTGACCGCTGGCCATCATGGTGTCTGGGAGGC
 TGAGATGTATTGGATCCATCCAACATCTGAAGAGCAAATTCGGCAAGAATATCTCCTGGAGATGAAGGT
 GAAGACCCCTCGCAGGTGGAGCCCTTGAACACGGAGATCATGAGGCTGTTCCCCAGGCTGCTCGGCAG
 GAAAGGACTCTTCTCTGATGGTCTATAAACTGCCAGGGAAGATGTGCAACCTTTATCCCAGGCCCTCT
 TCAAATTAGAGACAGTTAAACAGAGCTTTGACCTGGAGGAGTACAGCCTTTCACAGTCCACCCTGGAGCA
 GGTCTTCTGGAGCTCTTAAGGAGCAGGAGCTGGACGGTTTTGAAGAGGAACTGATCCCTCAGTCAAG
 TGAAGCTCCTCCACAGGAAGAGGCG

ACGCGTACGCGGCCGCTCGAG - GFP Tag - GTTTAA

Protein Sequence: >MG219540 representing NM_153145
 Red=Cloning site Green=Tags(s)

```

MVKREINVCQQTWALLCKNLLRKKRLKRDTFLEFLYTALILLSLILFLQLHEVYDFSSLPDVLGRIDSF
NDSTFMIVYPTIPTTTQRIMDRVSLVSYMTGRKILASPNEENMTELSMRFSADVGVIFTNAYSYNLKF
KGARIPTIKEHQDHTAHCHSYGEIIYCYGLSEFWRDGFVALQAAINAAIEVTTNHSVMEEMMSLTGKYIK
IDSFVQGEQTDDCFLFFCIIIRFSPLTYIISAGVTRERKKMKGLMAVMGLRDSAFWLSWGLLYGVIVFV
TLLSTTIVKLVQFVFLTGFMVIFSLFFYGLSLISLSFLMSVLLKKSFLDVLVFLLLTVSCGSLGFTALY
RYLPVSLLEWLLSLLSPFAFMLGMVQLLRDLDYDVSADPMGNPNVEIGTIFMLFFDGVFYLLLTFFYFEK
LPSEYGRRHPPFLFKSSFWGQNPANRTALDNETDYEFSDSFEFVSMFHFHGAIRIRNLTKDYIQKS
KRTEALKDLTLDVYKQGITAILGHSGAGKSTLLNVL SGLCVPTKGWVTIHNNKLEMTDLENISKLTGVC
PQCNVQDFDLTVRENRLFAKIKGIQAHEVDNEVQRVLLELDMKNTQNILVQNL SGGQKRKLTFGIAILG
DPQIFLLDEPTAGLDPF SRHRVWNFLKERRADRVVLFSTQFMDEADILADRKFVISKGKLCAGSSLFLK
KKWIGIGYHLSQLSETCVHERITSLVKQHIPDSKLSAESEGKLSYILPLERTNKFDPDYRDLERSPDLGI
ENYGVSIITLTVFLKLEGGSSIDQSDIGMTEDVQAGGARS PERF AEVEQLVSLNLRCKMKGGMALWWQ
QLCAVTRLRFLKHKHERKSIVILILVLGIGLLHILSANIYRMVRQSDYCWELAPHMYFLTPGQQQPPLT
NLLIVNKTGAKIDDFIHSLEQQNIALEVD AFGTRNGTEDSQYNGAIIISGDEKNYNFTLACNTKRLNCF
VLVDIVSNGLLGLFAPS AHIQTDRSTFPEENDHRKFDYLAYFFLWVLLMACVPPYISMTSIDDYKNAQF
QLWISGLSPSAYWFGQALFEVPVYCALILSIFIAFYASAPPEKFTVGD LFIQILYVGGYAMSVIFMTYV
ISFIYRKRKNSGLWSLCFYIVSFFSMCFMLIDYFRDISLFLVLI ALVPPATLGGCTLLHFENREFSEIIF
EPEREYSYLFLLAPLLHFAIFVILRCMERKFGMKTMR TDPVFRISPRSDRVFNPNPEDPDGEDVDSQER
VWTANALTSADFQEKPAIIASCLRKEYKGGKCFVLKSKKKIATRNI SFCVVRKGEVVGLLGHNGAGKSTS
IKMITGETKPSAGQVLLKGSSTGDTPGFLGYCPQENALWNL TVREHLEIFAAIKGMRKSDANVAIERLA
DALKLQDQLKSPVKTLSEGVKRLCFVLSILGNPSVLLLEPSTGMDPEGQQQMWA IQATFSNTERGAL
LTHYMAEAEAVCDRVAIMVSGRLRCIGS IQHLKSKFGKEYLLEMKVKTPSQVEPLNTEIMRFPQAARQ
ERYSSLMVYKLPREDVQPLSQAFFKLETVKQSFDEEYSLSQSTLEQVFLELSKEQELDGFEEELDPSVK
WKLLPQEEA
  
```

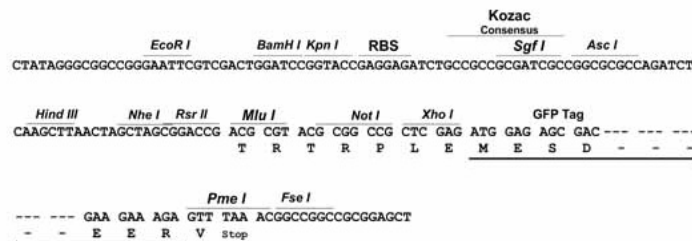
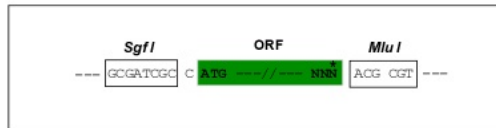
TRTRPLE - GFP Tag - V

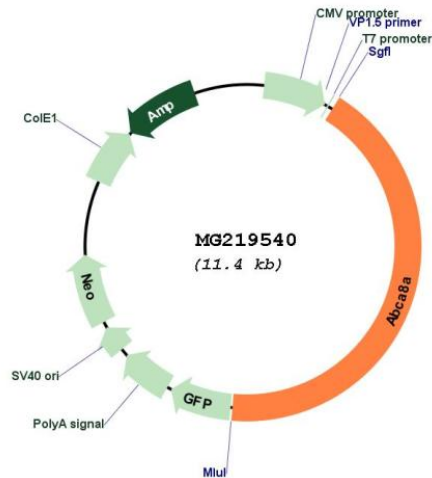
Restriction Sites:

SgfI-MluI

Cloning Scheme:

Cloning sites used for ORF Shutting:



Plasmid Map:


ACCN: NM_153145

ORF Size: 4857 bp

OTI Disclaimer: Due to the inherent nature of this plasmid, standard methods to replicate additional amounts of DNA in *E. coli* are highly likely to result in mutations and/or rearrangements. Therefore, OriGene does not guarantee the capability to replicate this plasmid DNA. Additional amounts of DNA can be purchased from OriGene with batch-specific, full-sequence verification at a reduced cost. Please contact our customer care team at custsupport@origene.com or by calling 301.340.3188 option 3 for pricing and delivery.

The molecular sequence of this clone aligns with the gene accession number as a point of reference only. However, individual transcript sequences of the same gene can differ through naturally occurring variations (e.g. polymorphisms), each with its own valid existence. This clone is substantially in agreement with the reference, but a complete review of all prevailing variants is recommended prior to use. [More info](#)

OTI Annotation: This clone was engineered to express the complete ORF with an expression tag. Expression varies depending on the nature of the gene.

Components: The ORF clone is ion-exchange column purified and shipped in a 2D barcoded Matrix tube containing 10ug of transfection-ready, dried plasmid DNA (reconstitute with 100 ul of water).

Reconstitution Method:

1. Centrifuge at 5,000xg for 5min.
2. Carefully open the tube and add 100ul of sterile water to dissolve the DNA.
3. Close the tube and incubate for 10 minutes at room temperature.
4. Briefly vortex the tube and then do a quick spin (less than 5000xg) to concentrate the liquid at the bottom.
5. Store the suspended plasmid at -20°C. The DNA is stable for at least one year from date of shipping when stored at -20°C.

RefSeq: [NM_153145.4](#), [NP_694785.3](#)

RefSeq Size: 5629 bp

RefSeq ORF: 4860 bp

Locus ID: 217258

UniProt ID: [Q8K442](#)

Cytogenetics: 11 E1

Gene Summary: ATP-dependent lipophilic drug transporter.[UniProtKB/Swiss-Prot Function]