

Product datasheet for **MG219497**

Lgr4 (NM_172671) Mouse Tagged ORF Clone

Product data:

Product Type:	Expression Plasmids
Product Name:	Lgr4 (NM_172671) Mouse Tagged ORF Clone
Tag:	TurboGFP
Symbol:	Lgr4
Synonyms:	9130225G07; A330106J01Rik; A930009A08Rik; Gpr48
Mammalian Cell Selection:	Neomycin
Vector:	pCMV6-AC-GFP (PS100010)
E. coli Selection:	Ampicillin (100 ug/mL)



[View online »](#)

ORF Nucleotide Sequence:

>MG219497 representing NM_172671
 Red=Cloning site Blue=ORF Green=Tags(s)

TTTTGTAATACGACTCACTATAGGGCGGCCGGGAATTCGTCGACTGGATCCGGTACCGAGGAGATCTGCC
 GCC**CGCATCGCC**

ATGCCGGGCCGCTGCGGCTGCTCTGCTTCTTCGCCCTGGGGCTGCTCGGCTCGGCCGGGCCAGCGGG
 CGGCGCCACCTCTCTGCGCTGCGCCCTGCAGCTGCGACGGCGACCGTCCGGTGGACTGCTCCGGGAAGG
 GTTGACGGCGGTACCGGAGGGGCTCAGCGCCTCACCCAAGCACTGGATATCAGTATGAACAATATCACT
 CAGTTACCAGAAGATGCATTTAAGAATTTTCCTTTCTAGAGGAGCTACAACCTGGCTGGTAAACGACCTTT
 CTTTTATCCACCAAAAAGCCTTGTCTGGGTTGAAAGAAGCTCAAAGTCTAACCCCTCCAGAACAATCAGTT
 GAAAACAGTACCCAGTGAAGCCATTCTGGGACTGAGTGTTCAGTCTCTACGCTTAGATGCCAACCAT
 ATTACCTCAGTCCCGGAGGACAGTTTTGAAGGGCTCGTTCAGTTGCGGCATCTGTGGCTGGATGACAACA
 TCTTGACGGAAGTGCCTGTGCGTCCGCTCAGCAACCTGCCAACCTGCAGGCGCTGACCTTGGCTCTCAA
 CAACATCTCAAGCATCCCGACTTCGCATTACCAACCTTTCAAGCTTGGTAGTGTGCATCTTCATAAC
 AATAAAATTAAGCCTCAGTCAACACTGTTTTGATGGACTAGATAACCTGGAAAACCTGGACTTGAATT
 ATAATAACTTGGATGAATTTCTCAGGCTATTAAGCCCTTCCAGCCTTAAAGAGCTGGGATTTACAG
 TAATTCTATTTCTGTTATCCCGGATGGAGCATTGCTGGTAACTCACTGCTAAGAAGTATCCATTTGAT
 GATAATCCTCTGTCTTTGTGGGAACTCAGCATTTCACAACCTGTCTGATCTGCATTCCTTAGTCATTC
 GTGGTGAAGCCTGGTGCAGTGGTTCCTCAATCTGGCCGAACTGTCATCTGGAGAGTCAACCTTGAC
 AGGGACAAAAAAGCAGCATACCTGATGATCTGTGCCAAAACAAAAGATGCTGCGGACTCTGGACTTA
 TCTTATAACGATATAAGAGACCTTCCAAGTTTAAATGGTGTGCGTGCATTGGAAGAAATTCATTGCAGC
 GTAATCAAACTCCCTGATAAAGGAAACTACTTTCAAGCCCTAACATCCCTAAGGATTCAGATCTGAG
 TAGAAAACCTGATTCTGTGAAATTCACAGTGGAGCTTTTGGGAAGCTTGGGACAATTAACCTGGATGTG
 AGTTTCAATGAATTAACCTCATTCTACGGAAGCCTGAATGGGCTCAATCAACTTAACTTGTGGGTA
 ACTTCCAGCTGAAAGATGCCTTGGCAGCCAGAGACTTTGCCAATCTCAGGTCTCTATCAGTACCATATGC
 TTATCAGTGTGTGCATTTTGGGGGTGTGACTCTATGCAAATTAACACAGAAGATAACAGCCCCCAA
 GACCACAGTGTGACAAAAGAGAAAGGTGCTACAGATGCAGCAAATGCCACCAGCACTGCTGAAAGTGAAG
 AACATAGCCAAATAATCATCCATTGTACACCTCAACAGGTGCTTTTAAAGCCCTGTGAATATTTACTGGG
 AAGCTGGATGATTCGCCCTACAGTGTGGTTCATTTTCTGGTGCCTTGTCTTCAACCTGCTTGTCTATT
 TTAACAGTGTTCGCTTGTTCATCACTGCCTGCCTCCAAGCTTTCATAGGCTTGATTCTGTGTCTA
 ACTTACTCATGGGCATCTATACTGGCATCCTTACTTTTCTTGATGCTGTCTGCTGGGGCCGATTTGCTGA
 ATTTGGCATTGGTGGGAACTGGCAGCGGCTGCAAGGTAGCTGGGTCTCTGGCAGTCTTCTCCTCAGAG
 AGCGCCGATTCTGTAAACCTGGCAGCCGTGGAAAAGAGCGTTTTTGGCAAAGGATGTAATGAAAAATG
 GGAAAAGCAGTCACTCCGACAGTTCAGGTGGCTGCCCTCGTAGCTTTGCTGGGTGCTGCAATAGCAGG
 CTGCTTCCCCCTTTTACCGGAGGGCAATATTCTGCATCACCTTGTGCTTGCATTTCTACAGGAGAG
 ACACCATCATTAGGATCACTGTGACCCTAGTGTATTAACCTCACTAGCATTATTTATTGATGGCCATTA
 TCTACACTAAACTCTACTGCAACTTAGAGAAAGAAGACCCGTGAGAAAACCTCCAGTCTAGCATGATTA
 GCACGTTGCTTGGCTCATCTTCAAACTGCATCTTCTTCTGCCCTGTTGCATTTTCTCATTTGCACCA
 TTGATCACGGAATCTCCATCAGCCCCGAGATAATGAAGTCTGTTACGCTGATATTCTTCCCGCTGCCTG
 CTTGCCTGAATCCAGTCTGTACGTTTTCTCAACCCAAAGTTTAAAGACGACTGGAAGCTCCTGAAGCG
 GCGTGTACCAGGAAACACGGATCAGTCTCAGTCTCCATCAGCAGCCAAGGCGGTTGTGGGGAACAGGAT
 TTCTACTACGACTGTGGCATGTATCCCACTTGCAGGGTAACTGACTGTCTGTGACTGTGTGAGTCA
 TTCTTCTGACAAAACAGTATCGTGCAAACTTAATAAAATCGCACAGTTGTCTGTATTGACAGTGGC
 CTCTTGCCAGAGGCCAGAGGCCACTGGTCTGATTGTGGCACACAGTCGGCCATTCTGACTATGCAGAT
 GAAGAGGATTCCTTTGTCTCGGACAGCTCTGACCAGGTGCAGGCCTGTGGACGAGCTGCTTCTACCAGA
 GTCGCGGATTCCTCTGGTGCCTATGCTTATAATCTACCGAGAGTCAGAGAC

ACGCGTACGCGGCCGCTCGAG - GFP Tag - GTTTAA

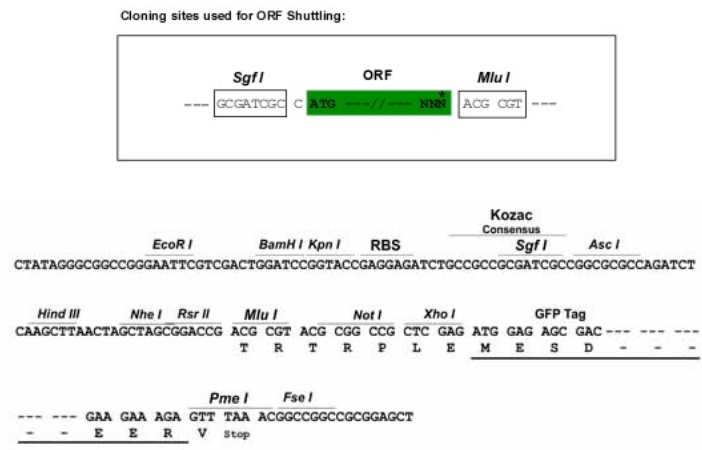
Protein Sequence: >MG219497 representing NM_172671
Red=Cloning site Green=Tags(s)

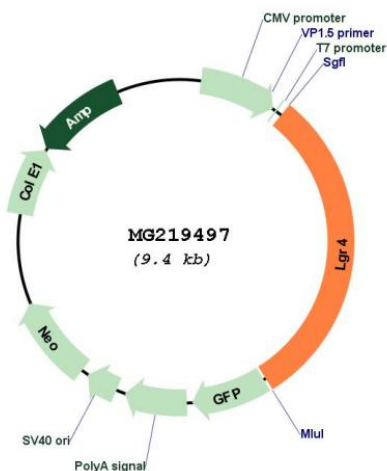
MPGPLRLLCFFALGLLGSAGPSGAAPPLCAAPCSCDGRRVDCSGKGLTAVPEGLSAFTQALDISMNNIT
 QLPEDAFKNFPFLEELQLAGNDLSFIHPKALSGLKELVLTQNNQLKTVPSEAIRGLSALQSLRLDANH
 ITSVPEDSFEGLVQLRHLWLDNILETEVPVRPLSNLPTLQALTLALNNISSIPDFAFTNLSSLVVLHLHN
 NKIKLSQHCDFGLDNLETLDLNYYNLDLDEFPQAIAKALPSLKEGFGHSNSISVIPDGAFAGNPLLRTHLY
 DNPLSFVGNFAFHNLSDLHSLVIRGASLVQWFPNLAGTVHLESLLTGTGISSIPDDLQCNQKMLRDL
 SYNDIRDLPSFNGCRALIEEISLQRNQISLIKETTQGLTSLRILDLSRNLIREIHSAGFAKLGITINLDV
 SFNELTSFPTEGLNGLNQLKLVGNFQLKDALAARDFANLRSLVSPYAYQCCAFWGCDSYANLNTEDNSPQ
 DHSVTKEKGATDAANATSTAESEHSQIIHCTPSTGAFKPEYLLGSMIRLTVWFIFLVALLFNLLVI
 LTVFASCSSLPASKLFIGLISVSNLLMGIYTGILTFLDVSWGRFAEFGIWWETGSGCKVAGSLAVFSSE
 SAVFLLTLAAVERSVFAKDVMMKNGKSSHLRQFQVAALVALLGAAIAGCFPLFHGGQYSASPLCLPFTGE
 TPSLGFVTVLVLLNSLAFLLMAIIYTKLYCNLEKEDPSENSQSSMIKHVAWLIFTNCIFFCPVAFFSFAP
 LITAISISPEIMKSVTLIFFPLPACLNPVLYVFFNPKFKDDWKLKRRVTRKHGSVSVSISQGGCGEQD
 FYYDCGMYSHLQGNLTVCCESFLLTKPVSKHLIKSHSCPVLTVASCQRPEAYWSDCGTQSAHSYAD
 EEDSFVSDSSDQVQACGRACFYQSRGFPLVRYAYNLPRVRD

TRTRPLE - GFP Tag - V

Restriction Sites: SgfI-MluI

Cloning Scheme:



Plasmid Map:


ACCN: NM_172671

ORF Size: 2853 bp

OTI Disclaimer: The molecular sequence of this clone aligns with the gene accession number as a point of reference only. However, individual transcript sequences of the same gene can differ through naturally occurring variations (e.g. polymorphisms), each with its own valid existence. This clone is substantially in agreement with the reference, but a complete review of all prevailing variants is recommended prior to use. [More info](#)

OTI Annotation: This clone was engineered to express the complete ORF with an expression tag. Expression varies depending on the nature of the gene.

Components: The ORF clone is ion-exchange column purified and shipped in a 2D barcoded Matrix tube containing 10ug of transfection-ready, dried plasmid DNA (reconstitute with 100 ul of water).

Reconstitution Method:

1. Centrifuge at 5,000xg for 5min.
2. Carefully open the tube and add 100ul of sterile water to dissolve the DNA.
3. Close the tube and incubate for 10 minutes at room temperature.
4. Briefly vortex the tube and then do a quick spin (less than 5000xg) to concentrate the liquid at the bottom.
5. Store the suspended plasmid at -20°C. The DNA is stable for at least one year from date of shipping when stored at -20°C.

RefSeq: [NM_172671.2](#), [NP_766259.2](#)

RefSeq Size: 5066 bp

RefSeq ORF: 2856 bp

Locus ID: 107515

UniProt ID: [A2ARI4](#)

Cytogenetics: 2 E3

Gene Summary:

Receptor for R-spondins that potentiates the canonical Wnt signaling pathway and is involved in the formation of various organs. Upon binding to R-spondins (RSPO1, RSPO2, RSPO3 or RSPO4), associates with phosphorylated LRP6 and frizzled receptors that are activated by extracellular Wnt receptors, triggering the canonical Wnt signaling pathway to increase expression of target genes. In contrast to classical G-protein coupled receptors, does not activate heterotrimeric G-proteins to transduce the signal. Its function as activator of the Wnt signaling pathway is required for the development of various organs, including liver, kidney, intestine, bone, reproductive tract and eye. May also act as a receptor for norrin (NDP), such results however require additional confirmation in vivo. Required during spermatogenesis to activate the Wnt signaling pathway in peritubular myoid cells. Required for the maintenance of intestinal stem cells and Paneth cell differentiation in postnatal intestinal crypts. Acts as a regulator of bone formation and remodeling. Involved in kidney development; required for maintaining the ureteric bud in an undifferentiated state. Involved in the development of the anterior segment of the eye. Required during erythropoiesis. Also acts as a negative regulator of innate immunity by inhibiting TLR2/TLR4 associated pattern-recognition and proinflammatory cytokine production. Plays an important role in regulating the circadian rhythms of plasma lipids, partially through regulating the rhythmic expression of MTTP (PubMed:24353284).[UniProtKB/Swiss-Prot Function]