

## Product datasheet for **MG219495**

### **Sik1 (NM\_010831) Mouse Tagged ORF Clone**

#### **Product data:**

Product Type:	Expression Plasmids
Product Name:	Sik1 (NM_010831) Mouse Tagged ORF Clone
Tag:	TurboGFP
Symbol:	Sik1
Synonyms:	Hrt-20; Msk; Sik; Sik-1; Snf1lk
Mammalian Cell Selection:	Neomycin
Vector:	pCMV6-AC-GFP (PS100010)
E. coli Selection:	Ampicillin (100 ug/mL)



[View online »](#)

ORF Nucleotide  
Sequence:

>MG219495 representing NM\_010831  
Red=Cloning site Blue=ORF Green=Tags(s)

TTTTGTAATACGACTCACTATAGGGCGGCCGGAATTCGTCGACTGGATCCGGTACCGAGGAGATCTGCC  
GCC**CGATCGCC**

ATGGTGATCATGTGCGAGTTCAGTGCGGTCCCCTCAGGCACTGGCCAGGGCCAGCAGAAGCCCTCCGGG  
TGGGCTTTTACGACGTGGAACGGACCCTGGGCAAAGGCAATTTTGCAGTGGTTAAGCTGGCGCGCACCG  
AGTCACCAAAAACGCAGGTTGCAATAAAAAATAATTGACAAGACACGGTTAGATTCTAGCAATCTGGAGAAG  
ATCTACCGGGAGGTCCAGCTCATGAAACTTTTGAACCACCCAAATATCATCAAGCTTTATCAGGTTATGG  
AGACAAAGGATATGCTCTACATTGTACAGAAATTTGCAAAAAATGGAGAAATGTTTGATTATCTGACTTC  
CAACGGGCACTTGAGTGAACGAGGCTAGGCAGAAATTTGGCAGATTCTGTCAGCCGTGGAGTACTGC  
CACAACCACACATTGTCCACCGGGACCTCAAGACGGAGAACCTGCTCCTGGACAGCAACATGGATATCA  
AGCTAGCAGATTTTGGATTTGGGAATTTCTACAAGCCAGGCGAGCCTCTGTCCACGTGGTGTGGGAGCCC  
CCCGTATGCAGCCCTGAAGTCTTCGAGGGGAAGGAGTACGAGGGTCCCAGCTGGACGTCTGGAGCCTC  
GGTGTGGTGTGTACGTCTGGTCTGTGGCTCCCTCCCTTCGACGGGCCAACCTGCCTACGCTGAGAC  
AGCGGGTACTGGAGGGCCGCTTCCGCATCCCCTTCTTATGTCTCAAGACTGTGAGACGCTGATCAGACG  
CATGCTGGTCTGGACCCCGCTAAGCGCATCACCATAGCCAGATCCGCCAGCACCGGTGGATGCAGGCC  
GACCCACTCTCCTGCAGCAGGATGACCCTGCCTTCGACATGCAAGGCTACACCTCCAACCTGGCGGACT  
ACAACGAACAGGTGCTAGGGATCATGCAGGCCCTCGGCATCGACCGGCAGCGGACTATAGAGTCTCTGCA  
GAACAGCAGCTACAACACTTTGCCGCCATTTACTACCTCTACTCGAGCGCCTCAAGGAGCATCGAAGC  
GCCCAGCCCTCATCCCGGCCACCCCTGCACCCACCAGACAGCCAGCTCCGAAGCTCAGACCTCAGCA  
GTCTGGAGTTCCCTCAAGAAATTTCCCGTGTGACCCTTTCCGGCCCTCTCTGCTGTGCCACAGCCCA  
GGCCTTGGCTCAGTCTGCTCCTGCAGGCTGAGATAGACTGTGATCTCCACAGCTCACTTCAGCCCTTATTA  
TCCCCCTGGATACCAACTGCAGTGGAGTGTCCGGCACCGATCCATCTCCCCAGCAGTCTGCTGGACA  
CAGCTATCAGCGAGGAGGCCAGGCAGGGTCCCAGCCTAGAGGAGGAACAGGAGGTCCAGGAACCCCTGCC  
CGGAAGCACAGGCCGGAGGCACACATTGGCTGAAGTCTCCACCCATTTCTCCCGCTCAACCCTCCTTGC  
ATAATTGTCTCCTCTGCCACGGCGAGTCCCTCGAAGGGACCAGCTCCGACAGCTGCCTCCCCTTCT  
CTGCAAGTGAAGTCTGCAGGGCTTGGCAGTGGCCTGGCCACCCAGGGCTGCTGGGCACCAGCTCTCC  
AGTCAGATTGGCCTCGCCCTTCTGGGATCACAGTCAGCCACCCCTGTGCTCCAGACTCAGGCAGGTCTG  
GGCACAGCCGTCTTACCTCCCGTCAGCTTCCAGGAGGGACGGAGCGTCTGATACCTCTCTCACTCAGG  
GGCTGAAGGCCTTCCGGCAGCAGCTGAGGAAAAATGCGAGGACCAAGGGTTCCTGGGACTGAACAAGAT  
CAAAGGGTTGGCTCGCCAGGTGTGCCAGTCTCCGTCCGAACCTCCCGGGGAGGGATGAGTACCTCCAC  
ACCCAGCCCAAGCTCCGGCTGCAAGGCTGCACGACCAGCAATCGGGAGGGCAGGAGCCTACTTGAAG  
AGGTCTCGCACCAGCAGAGGCTGCTCCAGTTACAGCACCCTTCTACCGCCCGCCCTCATCTGGCTG  
CCAGCAGGGCCCCAGCTGTCCCGGTCCCCTATGTGCTTGTCCCTGTGACAGCCTCCTCGTGTCTGGA  
ATTCCACTGTGCCAACCCCTTCTCCAGGCTGGCATGTCCCCTGTGGCGTCTGCTGCGCATCTCCTGG  
ATACCCACTTGACATCAGTGTGGCCAGTGGCCCTCCCCTGAGGGCCCTGCCACAGTGCCTCACCAG  
GCTGTCCCAGGCTGTGATCCAGCTGGGCTGCCACAGGGGACTGTGAGATGGAGGACCTGACCTCTGGC  
CAGCGGGGACATTCTGCTCTGGTACAG

**ACGCGT**ACGCGGCCGCTCGAG – GFP Tag – GTTTAA

**Protein Sequence:** >MG219495 representing NM\_010831  
 Red=Cloning site Green=Tags(s)

```

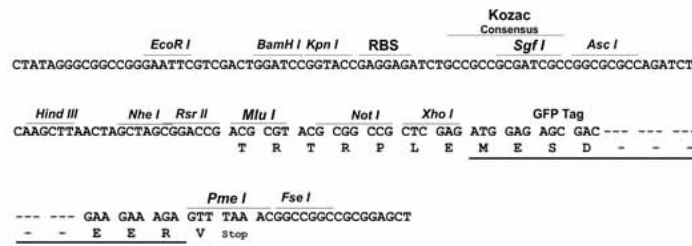
MVMSEFSAVPSGTGQGQKPLRVGFYDVERTLGKGNFAVVKLARHRVTKTQVAIKIIDKTRLDSSNLEK
IYREVQLMKLLNHPNIIKLYQVMETKMDLYIVTEFAKNGEMFDYLTSNHLSENEARQKFWQILSAVEYC
HNHHIVHRDLKTENLLDSNMDIKLADFGFGNFYKPEPLSTWCGSPPYAAPEVFEGKEYEGPQLDVWSL
GVVLYVLVCGSLPFDGPNLPTLRQRVLEGRFRIPIFFMSQDCETLIRRMLVVDPAKRITIAQIRQHRWMA
DPTLLQQDDPAFDMQGYTSNLGDYNEQVLGIMQALGIDRQRTIESLQNSSYNHFAAIYYLLLERLKEHRS
AQPSSRPTAPTRQPQLRSSDLSSEVPQEILPCDPFRPSLLCPQPQALAQSVLQAEIDCDLHSSLQPLL
FPLDTNCSGVFRHRSISPSLLDTAISEEARQGPSLEEEQEVQEPLPGSTGRRHTLAEVSTHFSPLNPPC
IIVSSSATASPEGTSSDCLPFSASEGPAGLGSGLATPGLLGTSSPVRLASPFLGSQSATPVLTQAGL
GTAVLPPVSFQEGRRASDTSLTQGLKAFRQQLRKNARTKGFLGLNKIKGLARQVCSSVTRPRGGMSTFH
TPAPSSGLQGCTTSNREGRSLLEEVLHQRLQLQHSSSTAAASSGCQQGPQLSPVPYVLAPCDLLVSG
IPLLPPTLLQAGMSPVASAAHLLDTHLHISAGPVALPTGPLPQCLTRLSPGCDPAGLPQGDCEMEDLTSG
QRGTFVLVQ
  
```

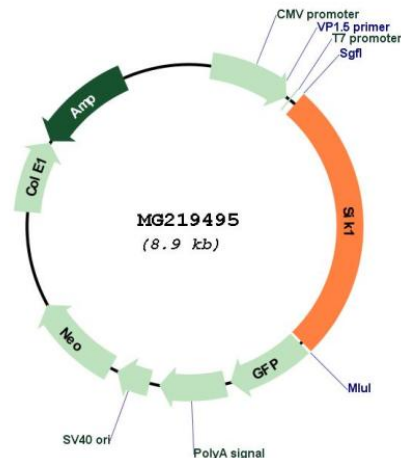
TRTRPLE - GFP Tag - V

**Restriction Sites:** SgfI-MluI

**Cloning Scheme:**

Cloning sites used for ORF Shuttling:



**Plasmid Map:**


**ACCN:** NM\_010831

**ORF Size:** 2337 bp

**OTI Disclaimer:** The molecular sequence of this clone aligns with the gene accession number as a point of reference only. However, individual transcript sequences of the same gene can differ through naturally occurring variations (e.g. polymorphisms), each with its own valid existence. This clone is substantially in agreement with the reference, but a complete review of all prevailing variants is recommended prior to use. [More info](#)

**OTI Annotation:** This clone was engineered to express the complete ORF with an expression tag. Expression varies depending on the nature of the gene.

**Components:** The ORF clone is ion-exchange column purified and shipped in a 2D barcoded Matrix tube containing 10ug of transfection-ready, dried plasmid DNA (reconstitute with 100 ul of water).

**Reconstitution Method:**

1. Centrifuge at 5,000xg for 5min.
2. Carefully open the tube and add 100ul of sterile water to dissolve the DNA.
3. Close the tube and incubate for 10 minutes at room temperature.
4. Briefly vortex the tube and then do a quick spin (less than 5000xg) to concentrate the liquid at the bottom.
5. Store the suspended plasmid at -20°C. The DNA is stable for at least one year from date of shipping when stored at -20°C.

**RefSeq:** [NM\\_010831.3](#)

**RefSeq Size:** 4512 bp

**RefSeq ORF:** 2340 bp

**Locus ID:** 17691

**UniProt ID:** [Q60670](#)

**Cytogenetics:** 17 17.25 cM

**Gene Summary:**

Serine/threonine-protein kinase involved in various processes such as cell cycle regulation, gluconeogenesis and lipogenesis regulation, muscle growth and differentiation and tumor suppression. Phosphorylates HDAC4, HDAC5, PPME1, SREBF1, CRTC1/TORC1 and CRTC2/TORC2. Acts as a tumor suppressor and plays a key role in p53/TP53-dependent anoikis, a type of apoptosis triggered by cell detachment: required for phosphorylation of p53/TP53 in response to loss of adhesion and is able to suppress metastasis. Part of a sodium-sensing signaling network, probably by mediating phosphorylation of PPME1: following increases in intracellular sodium, SIK1 is activated by CaMK1 and phosphorylates PPME1 subunit of protein phosphatase 2A (PP2A), leading to dephosphorylation of sodium/potassium-transporting ATPase ATP1A1 and subsequent increase activity of ATP1A1. Acts as a regulator of muscle cells by phosphorylating and inhibiting class II histone deacetylases HDAC4 and HDAC5, leading to promote expression of MEF2 target genes in myocytes. Also required during cardiomyogenesis by regulating the exit of cardiomyoblasts from the cell cycle via down-regulation of CDKN1C/p57Kip2. Acts as a regulator of hepatic gluconeogenesis by phosphorylating and repressing the CREB-specific coactivators CRTC1/TORC1 and CRTC2/TORC2, leading to inhibit CREB activity. Also regulates hepatic lipogenesis by phosphorylating and inhibiting SREBF1. In concert with CRTC1/TORC1, regulates the light-induced entrainment of the circadian clock by attenuating PER1 induction; represses CREB-mediated transcription of PER1 by phosphorylating and deactivating CRTC1/TORC1.[UniProtKB/Swiss-Prot Function]