

Product datasheet for **MG219473**

Nxph4 (NM_183297) Mouse Tagged ORF Clone

Product data:

Product Type:	Expression Plasmids
Product Name:	Nxph4 (NM_183297) Mouse Tagged ORF Clone
Tag:	TurboGFP
Symbol:	Nxph4
Synonyms:	1110036M10Rik; AI851051
Mammalian Cell Selection:	Neomycin
Vector:	pCMV6-AC-GFP (PS100010)
E. coli Selection:	Ampicillin (100 ug/mL)
ORF Nucleotide Sequence:	>MG219473 representing NM_183297 Red=Cloning site Blue=ORF Green=Tags(s)

TTTTGTAATACGACTCACTATAGGGCGGCCGGAATTCGTCGACTGGATCCGGTACCGAGGAGATCTGCC
GCC**CGATCGCC**

ATGCGGCTGCTCCCGAATGGCTCCTTGTCTTTGGTCCTTGCTCCTTAGGAAGGCTGTCTGTGGCC
AGATCGTGGAGTCCGGGAGGCCACCTAGACTTGCCTCCCGCCATGGCCGGAGGGGGCGCCCGCG
CCAGCAGTCCCAGCGCCCGCATCTTCCGAGGGCCTGGGCATGGCGCGCTCCTGGAGCTGGGCTTGGCCG
GCTAACCAACACCGGGGCGCTGGCCAAGCCAGGGACAGCCGGTGGCCCGTCCGTGCCGCGCACCAAGAGGA
AGCCATCCATTAAGCGGCCGAGCCAAGAAGATTTTCGGCTGGGGGACTTTTACTTTCTGTGTGCATAC
CCTCAAGTTCTCGCTGTTGGTGACCGGCAAGATCGTGGACCATGTGAACGGTACCTTCAGTGTGTACTTC
CGTCACAATTCGTCCAGCCTGGGTAACCTAAGCGTCAGTATCGTGCCGCCCTCCAAGCGTGTGGAGTTCCG
GGGGCGTCTGGTTGCCTGGGCTGCCTCCCACCCTCTACAGTCCACGCTGGCACTGAAGGGGTGCTTCC
TGGATTGGGGCCCTCTGGGATGGCGGGCAGGGGCTGGGAGCAACCTTGGGGGCGCACTTGGCCGGC
CCACTCGAAGCGCGCTAGGAGTTCTGGGGCCAAAGAGTCGCGCGCTTTAATTGCCACGTGGAATATG
AGAAGACAAACCGCGCTCGAAGCACCGCCCGTGCCTGTACGACCGTCGCAGGTGTGCTTACCAGCA
CACGCAGAGCCAGGCCGCTGGCTCTGCCCAAGCCCTCAAAGTCATCTGTATCTTCGTCTCCTTCCTC
AGTTTTGACTACAACTGGTGCAGAAGGTGTGCCAGACTATAACTTCCAGAGTGAGCACCCCTACTTTG
GA

ACGCGTACGCGGCCGCTCGAG - GFP Tag - GTTTAA



[View online »](#)

Protein Sequence: >MG219473 representing NM_183297

Red=Cloning site Green=Tags(s)

```
MRLLPEWLLLLFGPWLLRKAVCGQIVESGRPQYLDLRPAMAGGGARGQQLPAPASSEGLGMARSWSWAWP
ANHTGALAKPGTAGGPSVPRTRKRKPSIKAARAKKIFGWGDFYFRVHTLKF SLLVTGKIVDHNVTFSVYF
RHNSSSLGNLSVSI VPPSKRVEFGGVWLP GPASHPLQSTLALLEGVLPGLGPPLGMAGQGLGSLGGALAG
PLGSALGVP GAKESRAFNC HVEYEKTNRARKHRPCLYDPSQVCF TEHTQSQAAWLCAKPFKVICIFVSFL
SFDYKLVQKVC PDYNFQSEHPYFG
```

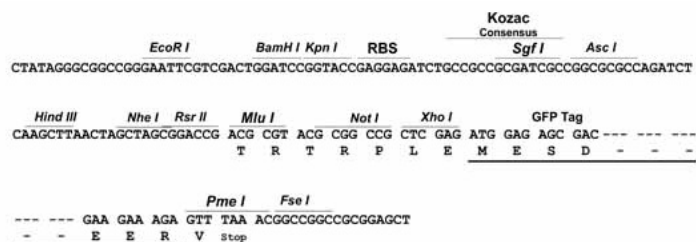
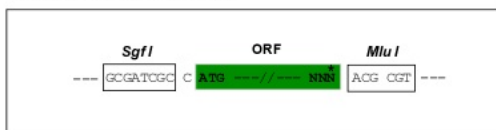
TRTRPLE - GFP Tag - V

Chromatograms: https://cdn.origene.com/chromatograms/ja1305_a07.zip

Restriction Sites: SgfI-MluI

Cloning Scheme:

Cloning sites used for ORF Shuttling:



ACCN: NM_183297

ORF Size: 912 bp

OTI Disclaimer: The molecular sequence of this clone aligns with the gene accession number as a point of reference only. However, individual transcript sequences of the same gene can differ through naturally occurring variations (e.g. polymorphisms), each with its own valid existence. This clone is substantially in agreement with the reference, but a complete review of all prevailing variants is recommended prior to use. [More info](#)

OTI Annotation: This clone was engineered to express the complete ORF with an expression tag. Expression varies depending on the nature of the gene.

Components: The ORF clone is ion-exchange column purified and shipped in a 2D barcoded Matrix tube containing 10ug of transfection-ready, dried plasmid DNA (reconstitute with 100 ul of water).

Reconstitution Method:

1. Centrifuge at 5,000xg for 5min.
2. Carefully open the tube and add 100ul of sterile water to dissolve the DNA.
3. Close the tube and incubate for 10 minutes at room temperature.
4. Briefly vortex the tube and then do a quick spin (less than 5000xg) to concentrate the liquid at the bottom.
5. Store the suspended plasmid at -20°C. The DNA is stable for at least one year from date of shipping when stored at -20°C.

RefSeq: [NM_183297.2](#), [NP_899120.2](#)

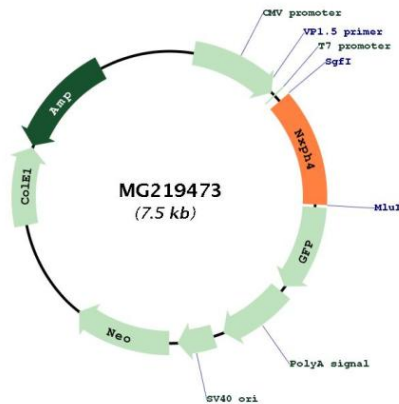
RefSeq Size: 1675 bp

RefSeq ORF: 915 bp

Locus ID: 104080

Cytogenetics: 10 D3

Product images:



Circular map for MG219473