

Product datasheet for **MG219447**

Vgf (NM_001039385) Mouse Tagged ORF Clone

Product data:

Product Type:	Expression Plasmids
Product Name:	Vgf (NM_001039385) Mouse Tagged ORF Clone
Tag:	TurboGFP
Symbol:	Vgf
Synonyms:	Gm1052
Mammalian Cell Selection:	Neomycin
Vector:	pCMV6-AC-GFP (PS100010)
E. coli Selection:	Ampicillin (100 ug/mL)



[View online »](#)

ORF Nucleotide Sequence:

>MG219447 representing NM_001039385
 Red=Cloning site Blue=ORF Green=Tags(s)

TTTTGTAATACGACTCACTATAGGGCGGCCGGAATTCGTCGACTGGATCCGGTACCGAGGAGATCTGCC
 GCC**GCGATCGCC**

ATGAAACCTTCACGTTGCCGGCATCCGTCCTTCTCTGCTTCTCTACTGATCCAGGGTTGGGAGCAG
 CGCCCCCGGGCGCCCGATGTTTTCTCTCCCTCAGCTCTGAGCATAATGGGCAGGTAGCTGAGGA
 CGCAGTGTCCCGGCCAAAGGATGACGGCGTACCAGAGGTCGAGCTGCTCGGAATCCCGAGCCTCAGGAC
 CAGGGAGAGCTCTTCCAGGGCGTGGATCCCGGGCGCTGGCTCGGTACTGTTGCAGGCACTGGACCGTC
 CGGCTCGCCCCGTCGGTCCCGGAGGTTCCAGCAGGGAACCCGAAGAAGCAGCAGAAGCTCTGCT
 GACCGAGTCCGTGCGCAGTCAGACCCATAGCTCCCGCACCAAGAAATCCAAGCGCCCGTGTGGCCCC
 CCTCGCCCTCAGACTCAGGACCGCGATCCCGAGGAGGACCGCTCAGAAGAGCTGGAGGCGTAGCAT
 CCTTGCTCCAAGAACTTCGAGATTTAGTCCGAGCAATGCTAAGCGCCAACAAGAGACGGCGGCAGCAGA
 GACTGAAACCCGCACGCACAGCTGACCGAGTCAATCTGGAGAGCCCCGGCCAGAGCGGTGTGGCGC
 GCTTCTGGGGAGAGTTCAGGGCGCGTTCGGAGCGCGCTCCTTCCGCCCCCGGTCCCTTCCAAT
 TCCAGGCTCGAATGTCCGAAAGCGCTCCCTTCCGAAACTCATCAGTTCGGGGAAGGAGTGTCTCCCC
 TAAACACATTTAGTGAGACTTTGACACCCTTATCCAAGCGTATCAAAGTCTAGGTGGCCCCCTCCCT
 AAGGTGCGCCGGCTCGAGGGTCAATTCCTGGGCGGCTCCGAGGCAGGAGAGCGCTGCTTCCAGCAAGGAT
 TAGTCCAGGTAGAGGCAGGGAGGAGACAGGCGGAGGCCACCCGGCAGGCCGCGGCAAGAAGAGCGGT
 GGCCGATCTCGCTCCGACTGCTGCTCCAGTATCTGTTGAGGGCGGAGCCCGGAGCGCGATCTCGGG
 GGTCCGAGCTGCAGGAGACGCAAGAGCGGAGAGAGGAGGAGGAGGAGGAGGAGGAGGAGGAGGAGGAG
 GAGGTGGTGGGGAGGACGATGTGGGGAAAGAGGATGAGGAGGCGGCGGAGGCGGAGGCGGAGGAGGAG
 GGCGGAGAGGGCGCGCAGAACGCACTCCTGTTCCGCCAGGAGGAGGACGGGGAAGCCGGAGCCGAGGAC
 AAACGCTCCAGGAGGAGGCGCCAGGCCATCGGCGGAAGGATGCTGAGGGGCGAGGAGGGCGGGAGG
 AGGATGACGACGACGAGGAGATGGATCCGACAGCATCGATAGTCTCATTGAACTGTCCACCAAACCTCCA
 CCTGCCAGCAGCATGTGGTACGATCATCGAAGAGGTGGAGGAGAAACGGAAGCGGAAGAAGAAGCC
 CCTCCGAGCCGGTCCCGCTCCAGGGCTGCCAGCCCGACCATGTCCGCTCTCCGAGCCCCAC
 CTCCCGCCAGCCGGGATGAGTTGCCGACTGGAACGAAGTCTCCACCTGGGATCGGGAGGAGGA
 TGAGGTGTTCCCGGGGCCATCACCCCTCCAAACTACATTCCGGCCGGGACACTGCAGCCGCC
 GCATCCTCCCGCCCGTCACTTCCATCACGCTTGCCACTGCGGCCACCATCCGGATCTGGAGGCC
 AGGCCAGGCGCGCAGGAGGAAGCGGACGCGGAGGAGCGCGGCTGCAGGAGCAGGAGGAGCTGGAGAA
 TTACATTGAGCACGTGCTGCTGCACCGCCG

AG**GCGACCG**ACGCGTACGCGGCCGCTCGAG - GFP Tag - GTTTAA

Protein Sequence:

>MG219447 representing NM_001039385
 Red=Cloning site Green=Tags(s)

MKTFTLPASVLFCLLLIQGLGAAPPGRPDVFPPLSSEHNGQVAEDAVSRPKDDGVPEVRAARNPEPQD
 QGELFQGVDPRALASVLLQALDRPASPPSVPGGSQQGTPEEAAEALLTESVRSQTHSLPAPEIQAPAVAP
 PRPQTQDRDPEEDDRSELEALASLLQELRDFSPSNAKRQETAEEETETRHTL TRVNLESPGPERVWR
 ASWGEFQARVPERAPLPPPVPSQFQARMSESAPLPETHQFGEVSSPKTHLGETLTPLSKAYQSLGGPFP
 KVRRLLEGSLGGSEAGERLLQQGLAQVEAGRRQAEATRQAAAQEERLADLASDLLLQYLLQGGARQRLG
 GRELQETQQERENEREEAEQERRGGEDDVGEEDDEAAEAEAEAEAEERARQNALLFAEEEDGEAGAED
 KRSQEEAPGHRRKDAEGAEEGEEDDDDEMDPQTIDSLIELSTKLHLPADDVVSIIIEVEEKRRKKNNA
 PPEVPVPPRAAPATHVRSPPPPAPARDELPDWNEVLPWDREDEVFPPGYPHFPNYIRPRTLQPP
 ASSRRRHFFHALPPARHHPDLEAQRRAQEEADAEEERLQEQELENYIEHVLLHRP

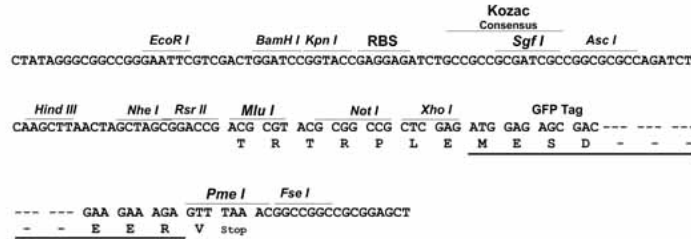
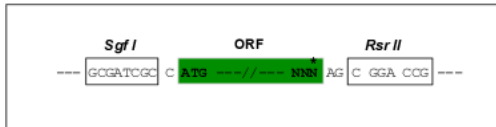
SGP**TRRRLE** - GFP Tag - V

Restriction Sites:

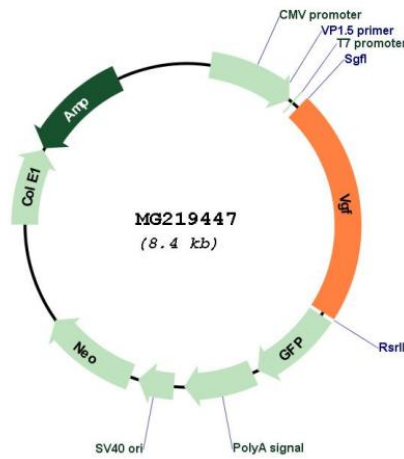
Sgfl-RsrII

Cloning Scheme:

Cloning sites used for ORF Shuttling:



Plasmid Map:



ACCN: NM_001039385
 ORF Size: 1851 bp

OTI Disclaimer:	The molecular sequence of this clone aligns with the gene accession number as a point of reference only. However, individual transcript sequences of the same gene can differ through naturally occurring variations (e.g. polymorphisms), each with its own valid existence. This clone is substantially in agreement with the reference, but a complete review of all prevailing variants is recommended prior to use. More info
OTI Annotation:	This clone was engineered to express the complete ORF with an expression tag. Expression varies depending on the nature of the gene.
Components:	The ORF clone is ion-exchange column purified and shipped in a 2D barcoded Matrix tube containing 10ug of transfection-ready, dried plasmid DNA (reconstitute with 100 ul of water).
Reconstitution Method:	<ol style="list-style-type: none"> 1. Centrifuge at 5,000xg for 5min. 2. Carefully open the tube and add 100ul of sterile water to dissolve the DNA. 3. Close the tube and incubate for 10 minutes at room temperature. 4. Briefly vortex the tube and then do a quick spin (less than 5000xg) to concentrate the liquid at the bottom. 5. Store the suspended plasmid at -20°C. The DNA is stable for at least one year from date of shipping when stored at -20°C.
RefSeq:	NM_001039385.1 , NP_001034474.1
RefSeq Size:	2553 bp
RefSeq ORF:	1854 bp
Locus ID:	381677
UniProt ID:	Q0VGU4
Cytogenetics:	5 76.13 cM
Gene Summary:	Neurosecretory protein VGF: Secreted polypeptide that is packaged and proteolytically processed by prohormone convertases PCSK1 and PCSK2 in a cell-type-specific manner (By similarity). VGF and peptides derived from its processing play many roles in neurogenesis and neuroplasticity associated with learning, memory, depression and chronic pain (PubMed:19863797, PubMed:26180209, PubMed:30504797).[UniProtKB/Swiss-Prot Function]