

Product datasheet for **MG219436**

Galnt14 (NM_027864) Mouse Tagged ORF Clone

Product data:

Product Type:	Expression Plasmids
Product Name:	Galnt14 (NM_027864) Mouse Tagged ORF Clone
Tag:	TurboGFP
Symbol:	Galnt14
Synonyms:	0610033M06Rik
Mammalian Cell Selection:	Neomycin
Vector:	pCMV6-AC-GFP (PS100010)
E. coli Selection:	Ampicillin (100 ug/mL)



[View online »](#)

ORF Nucleotide Sequence:

>MG219436 representing NM_027864
 Red=Cloning site Blue=ORF Green=Tags(s)

TTTTGTAATACGACTCACTATAGGGCGGCCGGGAATTCGTCGACTGGATCCGGTACCGAGGAGATCTGCC
 GCC**CGGATCGCC**

ATGCGCGGCTGACTCGCCGCTTGGCGCTGCCATCTTTGGGGTCTCTGGATCACCGTACTGCTGTTCT
 TCTGGGTACCAAGAGGAAGTTGGAGGTGCCGCTGGGACCCGAAGTGCAGACCCCAAGCCTCCGATGC
 GGACTGGGATGACCTGTGGGAGCAGTTTGTATGAGCGGCGGTATCTGAATGCCAAAAAGTGGCGTGTCCGT
 GATGATCCCTACAACTGTATGCTTTCAACCAACGGGAGAGTGAGCGGATATCGACAACTCGGGCTGTC
 CAGACACACGTCATAAGAGATGTTGCTGCTTGTGATTGACCGACCTTCTCCACCAGCATCATCAT
 CACCTTCCACAACGAGGCACGTTCCACTCTACTCAGAACCATCCGCAGTGTGTTAAACCGAACCCCTATG
 CATCTGATCCAGGAAATCATATTAGTGGATGACTTTAGCAATGACCCCGAGGACTGCAAGCAACTCATCA
 AATTGCCCAAGGTGAAGTCTTGCACAACATGAGCGCAAGGTCTGGTCCGGTCTCGGATGCGAGGTGC
 TGACATTGCCAAGGCACCACTCTGACCTTCTGGACAGCCATTGTGAGGTGAACAGGGATTGGCTGCAG
 CCCTGTTACACAGGGTCAAAGAGGACTACACAAGGGTGTGTGCCCTGTGATTGACATCATTAACCTGG
 ATACCTTCAACTATATTGAGTCTGCCTCAGAGCTCAGAGGGGGCTTTGACTGGAGCCTGCACTTCCAGTG
 GGAGCAGCTCTCCCTGGAGCAGAAAGCTTTGCGCCTAGACCCTACTGAGCCCATCCGGACTCCAATCATA
 GCCGGAGGGCTCTTCGTGATCGACAAAGCCTGGTTCGATTACCTGGGTAATATGACGTCGACATGGACA
 TCTGGGGTGGGGAGAAGTTTGAATCTCTTTCCGAGTGTGGATGTGTGGAGGTGGCCTGGAGATCATCCC
 TTGCAGCCGGTGGGACATGTCTTCAGAAAAAGCATCCTTATGTTTTCCCGATGGGAACGCCAACACA
 TATAAAGAACCAAGAGGACAGCTGAAGTATGGATGGATGAATACAAGCAGTACTACTATGCAGCTC
 GGCTTTTGCCTGGAGAGACCCTTTGGAACATTGAGAACAGGCTGAACCTGAGGAAGAATCTTCACTG
 CCAGACCTTCAAGTGGTACCTAGAGAATGTCTACCCAGAAGTCCAGGGTCCCGCCAGACTCCTCCATCCAG
 AAGGGCAATATCCGCGCAGCGCAGAAAGTGCCTTGAAGTCTCAAAGCAGAAAAAACAGGAGATTCTCAGGC
 TAAGTCCCTGTGCCAAGGTCAAAGGAGATGGAGCAAAGTCTCAGGTGTGGCCTTACATACACCCAGCA
 GATCATCCAAGAAGAGCTGTGCCTGTCCGTGGTACCCTGTTTCTGGTGCCTCCGTTCTTGTCTCTA
 TGCAAGAATGGGGATGAAAGGCAGCTATGGACCAAGACTGGTCCCGAATTGAGCACATAGCATCTCACC
 TCTGCCTGGATACAGACATGTTTGGTGCAGCACCAGGATGGCAAGGAGTCTGTCAACCTTGTGA
 GTCGTCGCTCATGAGCCAGCACTGGGACATTGTGAGCTCA

ACGCGTACGCGGCCGCTCGAG - GFP Tag - GTTTAA

Protein Sequence:

>MG219436 representing NM_027864
 Red=Cloning site Green=Tags(s)

MRRLTRRLALPIFGVLWITVLLFFWVTKRKLKLEVPLGPEVQTPKPSDADWDDLWEQFDERRYLNKKWRVG
 DDPYKLYAFNQRESERISSRAVDPDRHKRCSLLVYCTDLPPTSIIITFHNEARSTLLRTRIRSVLNRTPM
 HLIQEIIIVDDFSDNPEDCKQLIKLPVKCLRNNERQGLVRSRMRGADIAQGTTLTFLDSHCEVNRDWLQ
 PLLHRVKEDYTRVVCVIDIINLDTFNYIESASELRGGFDWSLHFQWEQLSLEQKALRLDPTPIRTPII
 AGGLFVIDKAWFDYLGKYDVMIDIWGGENFEISFRVWMC GGLEIIPCSRVGHVFRKKHPYVFPDGNANT
 YIKNTRKTAEVWMDYKQYQYAAARPFALERPFNGIENRLNLRKNLHCQTFKWYLENVYPELRVPPDSSIQ
 KGNIRQRQKCLEQKQKQEIILRLSPCAKVKGDGAKSQVWAFYTTQIIQEELCLSVVTLFPGAPVVLAL
 CKNGDERQLWTKGARIEHIASHLCLDMDMFGDSTEDGKEVVVNPCESSLMSQHWDIVSS

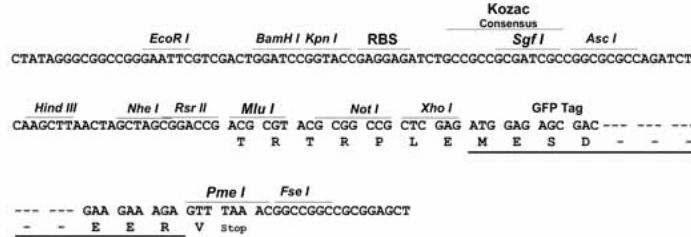
TRTRPLE - GFP Tag - V

Restriction Sites:

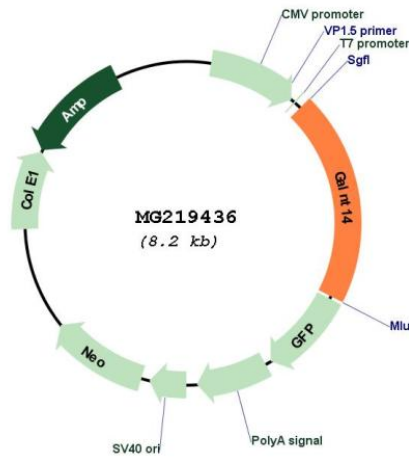
Sgfl-Mlul

Cloning Scheme:

Cloning sites used for ORF Shutting:



Plasmid Map:



ACCN:	NM_027864
ORF Size:	1650 bp
OTI Disclaimer:	The molecular sequence of this clone aligns with the gene accession number as a point of reference only. However, individual transcript sequences of the same gene can differ through naturally occurring variations (e.g. polymorphisms), each with its own valid existence. This clone is substantially in agreement with the reference, but a complete review of all prevailing variants is recommended prior to use. More info
OTI Annotation:	This clone was engineered to express the complete ORF with an expression tag. Expression varies depending on the nature of the gene.
Components:	The ORF clone is ion-exchange column purified and shipped in a 2D barcoded Matrix tube containing 10ug of transfection-ready, dried plasmid DNA (reconstitute with 100 ul of water).
Reconstitution Method:	<ol style="list-style-type: none">1. Centrifuge at 5,000xg for 5min.2. Carefully open the tube and add 100ul of sterile water to dissolve the DNA.3. Close the tube and incubate for 10 minutes at room temperature.4. Briefly vortex the tube and then do a quick spin (less than 5000xg) to concentrate the liquid at the bottom.5. Store the suspended plasmid at -20°C. The DNA is stable for at least one year from date of shipping when stored at -20°C.
RefSeq:	NM_027864.2 , NP_082140.2
RefSeq Size:	2467 bp
RefSeq ORF:	1653 bp
Locus ID:	71685
UniProt ID:	Q8BVG5
Cytogenetics:	17 E2
Gene Summary:	Catalyzes the initial reaction in O-linked oligosaccharide biosynthesis, the transfer of an N-acetyl-D-galactosamine residue to a serine or threonine residue on the protein receptor. Displays activity toward mucin-derived peptide substrates such as Muc2, Muc5AC, Muc7, and Muc13 (-58). May be involved in O-glycosylation in kidney (By similarity).[UniProtKB/Swiss-Prot Function]