

Product datasheet for **MG219435**

Pik3c2g (NM_207683) Mouse Tagged ORF Clone

Product data:

Product Type:	Expression Plasmids
Product Name:	Pik3c2g (NM_207683) Mouse Tagged ORF Clone
Tag:	TurboGFP
Symbol:	Pik3c2g
Synonyms:	C80387; PI3K-C2-gamma
Mammalian Cell Selection:	Neomycin
Vector:	pCMV6-AC-GFP (PS100010)
E. coli Selection:	Ampicillin (100 ug/mL)
ORF Nucleotide Sequence:	>MG219435 representing NM_207683 Red=Cloning site Blue=ORF Green=Tags(s)

TTTTGTAATACGACTCACTATAGGGCGGCCGGAATTCGTCGACTGGATCCGGTACCGAGGAGATCTGCCGCC**CGATCGCC**

ATGGCATAACAGTTGGCAAACAGAGCCAAATCGCACTGAACCACAGGAAGATGGATCTGATACCCAACAAT
TTCACCATACTAACCAGCACCTTCTTCCAGGCAAGTCAGGTTGGGTTTTGATCAGCTGGTGAAGAGAT
CAATAATAAGACTCCACTGTCTGAGAGTAAAAGGAAGAAGACACGTATTTGTGCCAGATGCACCAAAC
TTGGTTTTCAAAATGGCCATCCATATATGAAACACACCCAAGACACTTCAGTGAATTCACTTCTCAGAGCC
CTGACTCTCCAGCTTCGGTTTTGAAAATATCAGCCATTGGTTTTAATCCTGTGTACTACCAACTCA
TCATCTCGTTTCATGAGGGAGCCTCCTGGAGAAATCCCAGTGGAAAATATCATGGCATCGAGTATCCAGA
TTCCGATGTCTACCTCCATCATCCACTGGCCAGGGTGAAGTAAATCCACAAGGACAATCAGGAACCAAAC
ATCATAACTACTGTGTAGAACATGAAGGCAATCTCCCCATCATCATTCTACTCAATGGACTCCAT
ACCCAATAGAGAGAAAAGAAGGAGTGGAGATGTGGACCTTGTGGAACCTTCTCTGGAGTTCTCTAAAGAC
TCCTTTTACCCAGGACATCCGAGAAGTGTGAGTGGAAAGCACAGAGCCGATTGGTTGTCCATTGAAA
TAGTTGAGGTACCCAAAGGAGTAACAAGAACCTGGCCTCCTTTTGTAAACAAAGTAAAAAGATAAGAGA
ATCATACCATGCAAGTGACATTAATTCCAATTCTGGGAAGATCTGGGCCATCACCACAGCCTATCCATCT
CGGCTCTTCGCTGACACCAAATTCAGAGTAAAAATTTCTATTGATAACTCAGCCAACTCCTCTCTTA
TGCCACACGCTAATTATCTTGTCAAAGACCTAATTGCTGAAATCTACTTTTATGTGCAAATGAGCCGCT
TTCCCCAAAGAGTATCTTCAAGTGTATGCGGTTCTGAGGAATTTTTACAGATGGATCACTCTCTAGGG
GGCCACAAAATATTCCAGAAAAATAATCTGTCTTCACTTCTTTCAGAAAAACAGGGACACTCCAG
GAAAATTATCCCGAAGAGTGAAGATGACCACAGTCCGTTTCTGTAACCAACTCTAGAATTTACACA
TATCTGAAAAATATCCAGACAATGCCTCTCCACAGTAATGAAAAATACAACCTCCAGTGGAAACACCTG
TTGAAACCCAGAAAGACATGGAGGAGAAACATTTGTCATCCATGTTTTCTGGTAACCAACACACTTCTC
AGCCACATGTGAATAATGTTCTTGAAGAAGTAAAAACATATGCAGTGTGTTGGGGTATTGAAACCA
ACAAGTTTCAGATGCCGTGAAAGAACTAAATCTAATTCTGCAGAGACCATCACAGATTTTCTCAGAAAT



[View online >](#)

TCAGAGACTTCAAAAAAGGCTTCATAGAGAGAGTGACAGCTGAACTATCAAGGTCCATCTATCAGCTAA
TCGACGTGTAAGTGCAGTACCTTCTGTACAGATTTCCAGCCTGTGCACACACCCGGAGGTGTCTCCCGTGT
CCACGCTGGGCTCCAGTCCCACCTGAGCTTACGGTGTGTTCCCTGCACAATGTCCCAGAGACTGGGCA
CACAGTACAAAGCATTTCGTTTTCTGCTGGCTCACATATGCTGGGAAGAAGCTGTGCCAAGTGAAAA
GCTGCAGACCCCTGCCAGTCAAAAAGCATTCTCCCTTTGGTCAACTGGAATGAAATAATCAATTTTCC
TCTTGAGATAAAGTCACTTCCAAGAGAATCCATGCTCGTTATAAACTGTTCCGGATTGACTCTGCCACC
CACAGCACAATCTGCTGGCCTGGACCTCCACTGTTCCGAGACAGGAGTCTGTGCTGGGTCTA
GGCTGTTCAAGTGTGACGTTACAGAGTGAGCCTCCTATCGAAATGATAGCTCCAGGCGTATGGGATGGGAG
CCAGCCTTCCCCACTGACCCTGCAGATAGATTTCCAGACGCGGGTGGGAGTATCTGAAACCTGAGTCT
GAAGAGAACAGAAGTACCATGAAGAGCCGCCAAGAGAGTGTAAAAACACATCGCCAACTCTCCAGAG
AGAAGTCTCCCTTGTACTTTCTGAGGAAAAGAGGAGATATTTGGTGTATCTGCTCTACTGCAACAA
TGAGAAGTCTCCCTCCCTTTGGTCTTGGGAGCGCCCTGGTTGGGATGAAGAGACAGTTTCTGAAATG
CATGCAATCTTGAGAAGTGGACGTTTTACACCCATGGGAAGCTCTGGTCTTTGACTCCAGGTTTC
CAGACCAAGACATTCTGGAAGTGGCGTTCAACAATTAGACACCCTCTTGACTGACGAGCTGCTGGACTG
CCTCCACAGCTAGTGCAGGCTGTCAAGTTTGGTGGAACTCGAAAGTCCCTTGGTGGAACTCCTGCTT
CGTCGCTCCTTGCAAAGCATCCGAGTGGCTCACCGTCTGTACTGGCTGCTACGGGATGCCAAGGTGAAG
CCTACTTTAAAAGCTGGTATCAGGAGCTTTGGCCGCTCTCCAGTTCTGTGCAGGAGAAGCCCTGAATGA
AGAGCTTTCCAAGGAGCAGAACTTGTCAAACCTCTGGGTGATATTGGAGAAAAAGTGAAGTCAAGCCAGT
GACCCTCAGAGAAAGGATGTGCTAAAGAAAAGAGATTGGCAGTCTAGAAGAATTCTTTAAAGATATAAAGA
CTTGCCATCTTCTCTGAACCCGGCACTGTGCATAAAAAGGAATTGATCGGGATGCTTGTCTGATTTTAC
ATCCAACGCTTCGCCATTGAAGATTACTTTTCATCAATGCTAATCCAATGGGCAAAAATATCAGTGTATT
TTTAAGGCCGGAGATGATCTTCGGCAGGATATGCTTGTCTGCAGATTATCAAGTGTGGCAACGCTT
GGCTGCAGGAGGCTCGATATGCAAAATGATCACTTATGGATGTCTATCCACAGGAAGAGCCCAAGGATT
CATAGAGATGGTGCCTGATGCTGTAACACTGGCCAAGATCCATCTGCACCTCTGGGCTGATCGGACCCCTG
AAAGAAAACACCATCAAAAAGTGGTTCAGTGCAGACAACCACTTAAAGGAAGATTATGAAAAGCCCTTGA
GAACTCTTTTTACTCTTGTGCTGGCTGGTGTGTGGTGCATTTCATCTTGGGAGTCTGTGACCGACATAA
TGACAATATCATGCTGACAAAAGTCAAGTGCATGTTTCATATTGACTTTGGAAAATCTTGGGTCATGCG
CAAACATTTGGCGGTATCAAAAGGGACAGAGCCCTTTTCAATTTTACTTCAGAGATGGAGTACTTTATTA
CTGAGGGTGGAAAAACACAGCATTTCAGACTTCGTGGAGCTTTGCTGCAGAGCTTACAACATCGT
CAGGAAACACAGCCAGTTGATCCTGAGTCTTCTAGAGATGATGCTGCATGCAGGACTGCCTGAGCTAAGG
GGATCGAAGACCTGAAGTATGTACATAACAATCTCCGCCACAAGACACAGACCTGGAAGCCACAAGTC
ATTTACCAAGAAGATAAAGGAAAGTCTGGAGTGTTCACAGTGAATTAATAAAGTATCCACACACT
TGACAGATGCCAGCCTAAGCCTTGCCAAACCTGCCCTCAGACTCTTCTCCAGGAATCCTGCATCCTG
AATAAGACCAGGACAATTCAGAGAGTCACAATTTTAGGGTTCAGCAAGACACACAGCAACCTGTACCTGA
TGGAGGTGACATGCAGTGAATAGGAGAAGCCTGACCAAGAAGTCCCTCGAGCAGTTTTACAGACTTCA
CAGCCAAATGCAGAAGCAGTTCTCCTCCTTGGCTCTCCAGAAATTTCTCACTGGTGGCATCTACCTTTC
ACAGACTCAGATCACAAGAGAATCAGAGATCTGAGTCACTACGTGGAACAGGTGCTACGCGGATCTTATG
AAGTTGCAACAGTGAATGTGTAAGTACTTACTTTTTCTCTCTGAACATATCAACCAACACTTGAAGACTC
TCCATTTGTGGACCCAGGTGAGAACTCTAGACAAGAGCCCTAAGGTGCAGTTACTGATGACGTATGAG
GACTCGAGGCTCACCATCCTAGTGAACACTTGAAAAACATCCATCTCCAGATGGCTCTGTGCCAGTG
CACATGTTGAAATTTATCTTCTACCACATCCCAGTGAAGTTCGGAGAAAAGAAAACAAAGTGTGTTCCAAA
ATGCACTGACCCAACTTACAATGAAATTTGGTATATGATGAAGTCTTGGGGCTCCAGGGCCATGTTTTA
ATGCTTATCGTGAAGAGCAAACTGATTTGTGGGAGCAGTTAACATCCAGCTCTGCAGTGTACCCCTCA
ATGAAGAAAAGTGGTACCCACTAGGAAACAGTATCATC

ACGCGTACGCGGCCGCTCGAG – GFP Tag – GTTTAA

Protein Sequence: >MG219435 representing NM_207683
 Red=Cloning site Green=Tags(s)

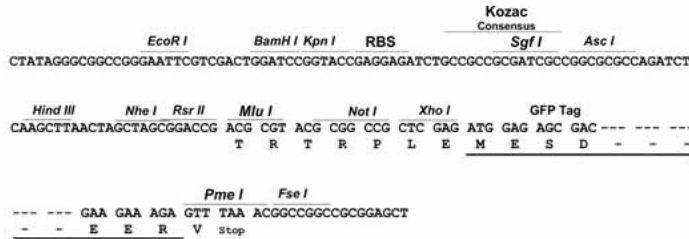
MAYSWQTEPNRTEPQEDGSDTQQFHHTNQHLSSRQVRLGFDQLVEEINNKTPLSESEKEEDTYFVPDAPN
 LVSKWPSIYETHPRHFSEFTSQSPDSSQLRFGKLSAIGFNPVAVLPTHHLVHEGASWRNPSGKYHGIEYPR
 FDALPPSSTGQGCENPQGGSGTKHHNYCVEHEGNLPHHSSYSMDSIPNREKRRSGDVLVEPSLEFSKD
 SFLPRTSENVSVESTEPIGCPIEIVEVPQGSNKNLASFCKVKKIRESYHSDINSNSGKIWAITAYPS
 RLFADTKFRVKISIDNSAQLLLLMPHANYLVKDLIAEILLCCANEPLSPKEYLLSVCGSEEFLLQMDHSLG
 GHKIFQKNKSVIQLHLQKNRDTPGKLSRKSEDDHSPFHLNQLLEFTHIWKISRQCLSTVMKKYNLHVEHL
 LKPQKDMEEKHLSSMFSGNQHTSQPHVNNVLEEKNICSVLGCIEITKQVSDAVKELNLILQRPSQNFQPN
 SETSKKGFIERVTAELSRSIYQLIDVYCSTFCTDFQPVHTPGGVSrvHAGLQSHLSFTVCSLHNPETWA
 HSYKAFSFCWLTYAGKKLQVKSCRPLPVTKSFSLLVNWNEIINFPLEIKSLPRESMLVIKLFGIDSAT
 HSTNLLAWTCLPLFPRQESVLGSRLFVTLQSEPPIEMIAPGVWDGSGPSPLTLQIDFPDAGWEYLKPESE
 EENRTDHEEPPRECLKHIAKLSQKKSPLLLSEEKRRYLWFYRLYCNENSSLPLVLGSPAGWDEETVSEM
 HAILRRWTFSHPWALGLLTSRFPDQDIREVAVQQLDTLLTDELLDCLPQLVQAVKFEWNLESPLVELLL
 RRSLQSIKVAHRLYWLLRDAQGEAYFKSWYQELLAALQFCAGEALNEELSKQKLVKLLGDIGEKVKSAS
 DPQRKDLKKEIGSLEEFFKDIKTCHLPLNPALCIKIDRDACSFTSNASPLKITFINANPMGKNSVI
 FKAGDDLQDMLALQIIQVMDNAWLQEGLDQMITYGCLSTGRAQGF IEMVDAVTLAKIHLHSLGIGPL
 KENTIKKWF SQHNHLKEDYEKALRNFFYSCAGWCVVTFILGVCDRHNDNIMLTKSGHMFHIDFGKFLGHA
 QTFGGIKRDRAPFI FTSEMEYFITEGGKNTQHFQDFVELCCRAYNIVRKHSQILILSLEMLHAGLPELR
 GIEDLYVHNNLRPQD TDLEATSHFTKKIKESLECFPVKLNLIHTLAQMPALSLAKPAPQTLQESCIL
 NKTRTIQRVTILGF SKTHSNLYLMEVTCSDNRRSLTKKSFEQFYRLHSQMOKQFSSLALPEFPWWHLPF
 TDSHKRIRDL SHYVEQVLRGSYEVANSDCVLSFFLSEHIQPTLEDSPFVDPGENSLDKSPKVQLLMTYE
 DSRLTILVKHLKNIHL PDGVSVAHVEIYLLPHPSEVRRKTKCVPKCTDPTYNEI VVYDEVLLGLQGHVL
 MLIVKSKTVFVGAVNIQLCSVPLNEEKWYPLGNSII

TRTRPLE - GFP Tag - V

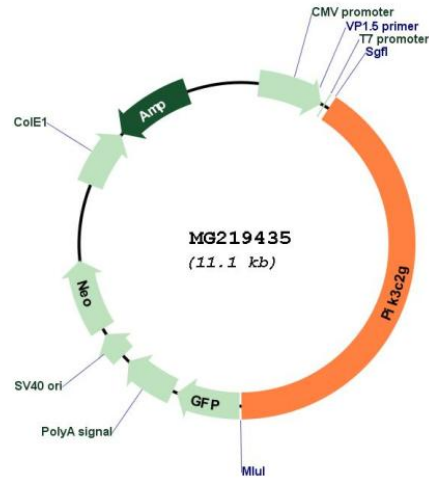
Restriction Sites: SgfI-MluI

Cloning Scheme:

Cloning sites used for ORF Shutting:



Plasmid Map:



ACCN: NM_207683

ORF Size: 4518 bp

OTI Disclaimer: The molecular sequence of this clone aligns with the gene accession number as a point of reference only. However, individual transcript sequences of the same gene can differ through naturally occurring variations (e.g. polymorphisms), each with its own valid existence. This clone is substantially in agreement with the reference, but a complete review of all prevailing variants is recommended prior to use. [More info](#)

OTI Annotation: This clone was engineered to express the complete ORF with an expression tag. Expression varies depending on the nature of the gene.

Components: The ORF clone is ion-exchange column purified and shipped in a 2D barcoded Matrix tube containing 10ug of transfection-ready, dried plasmid DNA (reconstitute with 100 ul of water).

Reconstitution Method:

1. Centrifuge at 5,000xg for 5min.
2. Carefully open the tube and add 100ul of sterile water to dissolve the DNA.
3. Close the tube and incubate for 10 minutes at room temperature.
4. Briefly vortex the tube and then do a quick spin (less than 5000xg) to concentrate the liquid at the bottom.
5. Store the suspended plasmid at -20°C. The DNA is stable for at least one year from date of shipping when stored at -20°C.

RefSeq: [NM_207683.2](#), [NP_997566.1](#)

RefSeq Size: 6358 bp

RefSeq ORF: 4521 bp

Locus ID: 18705

UniProt ID: [O70167](#)

Cytogenetics: 6 69.7 cM

Gene Summary: Generates phosphatidylinositol 3-phosphate (PtdIns3P) and phosphatidylinositol 3,4-bisphosphate (PtdIns(3,4)P2) that act as second messengers. May play a role in SDF1A-stimulated chemotaxis.[UniProtKB/Swiss-Prot Function]