

## Product datasheet for **MG219382**

### Mapre2 (NM\_001162941) Mouse Tagged ORF Clone

#### Product data:

Product Type:	Expression Plasmids
Product Name:	Mapre2 (NM_001162941) Mouse Tagged ORF Clone
Tag:	TurboGFP
Symbol:	Mapre2
Synonyms:	AI314113; C820009F03Rik; D18Abb1e; EB1; EB2; RP1
Mammalian Cell Selection:	Neomycin
Vector:	pCMV6-AC-GFP (PS100010)
E. coli Selection:	Ampicillin (100 ug/mL)
ORF Nucleotide Sequence:	>MG219382 representing NM_001162941 Red=Cloning site Blue=ORF Green=Tags(s)

TTTTGTAATACGACTCACTATAGGGCGGCCGGAATTCGTCGACTGGATCCGGTACCGAGGAGATCTGCC  
GCC**CGATCGCC**

ATGAAACAGATCAGAGATCAACGGGTAATCAGAAAGGGTCCCCAGAAGCACCATTCACTTCAACAGCCAG  
GGAGAGTGCCTGGATGTTCAAATTGGGGAATGGCGGTCAATGTGTATTCTACCTCGATAACCCAGGAGAG  
TATGAGCAGGCATGACATCATTGCATGGGTCAATGACATCGTGTCTTAACTACACAAAAGTGGAAACAG  
CTCTGTTCAAGGAGCAGCCTATTGCCAGTTCATGGACATGCTCTCCCGGGCTGTATTAGTTGAAGAAAG  
TAAATCCAAGCAAAGTTGGAGCATGAGTATATTCACAACCTTAACTTCTGCAAGCATCCTTTAAACG  
GATGAATGTTGATAAGGTAATCCAGTGGAGAAGCTGGTAAAGGGCGTTTCCAAGACAACCTGGATTTT  
ATTCAGTGGTTTAAAGAAGTTCTACGATGCTAACTATGACGGGAAGGAGTACGATCCTGTTGAGGCCCGAC  
AAGGGCAAGATGCAATTCCTCCCTGACCCTGGTGAACAGATCTTCAACCTGCCAAGAAGTCCGACCA  
TGCAAACCCCCACAGCAGGCGCGGCTAAGTCAAGTCTGCATCTAAGCCAGGATCCACACCTTCTCGC  
CCCTCGTCTGCCAAAAGGGCTTCATCCAGTGGCTCTGCATCCAGATCTGACAAAGATTTAGAAACGCAGG  
TCATACAGCTCAACGAGCAGGTACATTCATTGAACTCGCCCTAGAAGGTGTGGAGAAGGAGAGGGATTT  
CTACTTCGGGAAGTTGAGAGAGATTGAGCTGCTGTGCCAAGAACATGGGCAGGAGAACGATGACCTCGTG  
CAGCGACTAATGGAAGTCTCTACGCTTCCGATGAACAGGAGGGCCAAACGGAAGAGCCAGAAGCAGAGG  
AGCAAGCCCATGACCAGCAGCCCCAGCAGCAGGAGGATAC

**ACGCGT**ACGCGGCCGCTCGAG - GFP Tag - GTTTAA



[View online »](#)

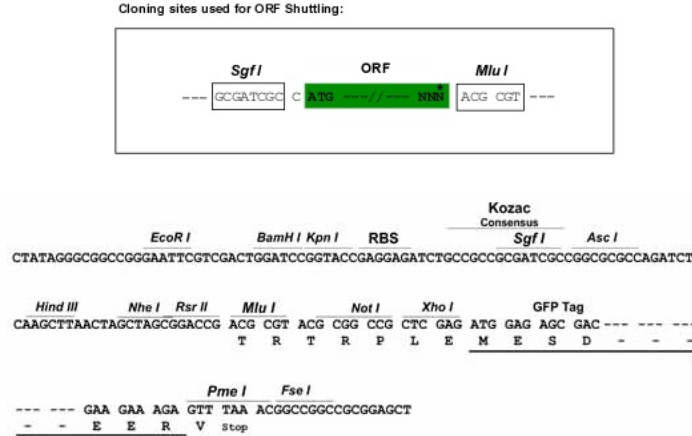
**Protein Sequence:** >MG219382 representing NM\_001162941  
 Red=Cloning site Green=Tags(s)

MKQIRDQRVIRKGPQKHSLQQPGRVPGCSNWGMVNVYSTSITQETMSRHDIIAWVNDIVSLNNTKVEQ  
 LCSGAAAYCQFMDMLFPGCISLKKVKFQAKLEHEYIHNFKLLQASFKRMNVKIPVEKLVKGRFQDNLDF  
 IQWFKKFYDANYDGKEYDPVEARQGQDAIPPPDPGEQIFNLPKSHHANSPTAGAAKSSPASKPGSTPSR  
 PSSAKRASSSGSASRSKDLETQVIQLNEQVHSLKLALLEGVEKERDFYFGKLR EIELLCQEHGQENDDLV  
 QRLMEVLYASDEQEGQTEEPEAEQAHDQPQQQEY

TRTRPLE - GFP Tag - V

**Restriction Sites:** SgfI-MluI

**Cloning Scheme:**



**ACCN:** NM\_001162941

**ORF Size:** 951 bp

**OTI Disclaimer:** The molecular sequence of this clone aligns with the gene accession number as a point of reference only. However, individual transcript sequences of the same gene can differ through naturally occurring variations (e.g. polymorphisms), each with its own valid existence. This clone is substantially in agreement with the reference, but a complete review of all prevailing variants is recommended prior to use. [More info](#)

**OTI Annotation:** This clone was engineered to express the complete ORF with an expression tag. Expression varies depending on the nature of the gene.

**Components:** The ORF clone is ion-exchange column purified and shipped in a 2D barcoded Matrix tube containing 10ug of transfection-ready, dried plasmid DNA (reconstitute with 100 ul of water).

**Reconstitution Method:**

1. Centrifuge at 5,000xg for 5min.
2. Carefully open the tube and add 100ul of sterile water to dissolve the DNA.
3. Close the tube and incubate for 10 minutes at room temperature.
4. Briefly vortex the tube and then do a quick spin (less than 5000xg) to concentrate the liquid at the bottom.
5. Store the suspended plasmid at -20°C. The DNA is stable for at least one year from date of shipping when stored at -20°C.

**RefSeq:** [NM\\_001162941.1](#), [NP\\_001156413.1](#)

**RefSeq Size:** 3993 bp

**RefSeq ORF:** 954 bp

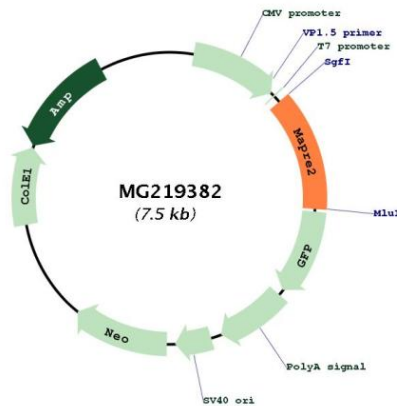
**Locus ID:** 212307

**UniProt ID:** [Q8R001](#)

**Cytogenetics:** 18 12.08 cM

**Gene Summary:** May be involved in microtubule polymerization, and spindle function by stabilizing microtubules and anchoring them at centrosomes. May play a role in cell migration (By similarity).[UniProtKB/Swiss-Prot Function]

### Product images:



Circular map for MG219382