

## Product datasheet for **MG219380**

### Tnfsf8 (NM\_009403) Mouse Tagged ORF Clone

#### Product data:

Product Type:	Expression Plasmids
Product Name:	Tnfsf8 (NM_009403) Mouse Tagged ORF Clone
Tag:	TurboGFP
Symbol:	Tnfsf8
Synonyms:	Cd30l; CD30LG; CD153; Tnl3a
Mammalian Cell Selection:	Neomycin
Vector:	pCMV6-AC-GFP (PS100010)
E. coli Selection:	Ampicillin (100 ug/mL)
ORF Nucleotide Sequence:	>MG219380 representing NM_009403 Red=Cloning site Blue=ORF Green=Tags(s)

TTTTGTAATACGACTCACTATAGGGCGGCCGGAATTCGTCGACTGGATCCGGTACCGAGGAGATCTGCC  
GCC**CGATCGCC**

ATGGAGCCAGGGCTGCAACAAGCAGGCAGCTGTGGGGCTCCTTCCCCTGACCCAGCCATGCAGGTGCAGC  
CCGGCTCGGTAGCCAGCCCCTGGAGAAGCAGGAGCCCTGGAGAAGCACAAGTCGCAGCTACTTCTACCT  
CAGCACCACCGCACTGGTGTGCCTTGTGTGGCAGTGGCGATCATTCTGGTACTGGTAGCCAGAAAAAG  
GACTCCACTCAAATACAACGAGAAGGCCCCCTTAAAGGAGGAAATTGCTCAGAGGATCTCTTCTGTA  
CCCTGAAAAGTACTCCATCCAAGAAGTCATGGGCCTACCTCCAAGTGTCAAAGCATCTCAACAATACCAA  
ACTGTCATGGAACGAAGATGGCACCATCCACGGACTCATATACCAGGACGGGAACCTGATAGTCCAATTC  
CCTGGCTTGTACTTCATCGTTTGCCAACCTGCAGTTCCTCGTGCAGTGTCAAATCATTCTGTGGACCTGA  
CATTGCAGCTCCTCATCAATCCAAGATCAAAAAGCAGACGTTGGTAACAGTGTGTGAGTCTGGAGTTCA  
GAGTAAGAATCTACCAGAATCTCTCAGTTTTGCTGCATTACTTACAGGTCAAATCTACCATATCA  
GTCAGGGTGGATAATTTCCAGTATGTGGATACAAACACTTCCCTCTTGATAATGTGCTATCCGCTCTTCT  
TATATAGTAGCTCAGAC

**ACGCGT**ACGCGGCCGCTCGAG - GFP Tag - GTTTAA



[View online »](#)

**Protein Sequence:** >MG219380 representing NM\_009403  
 Red=Cloning site Green=Tags(s)

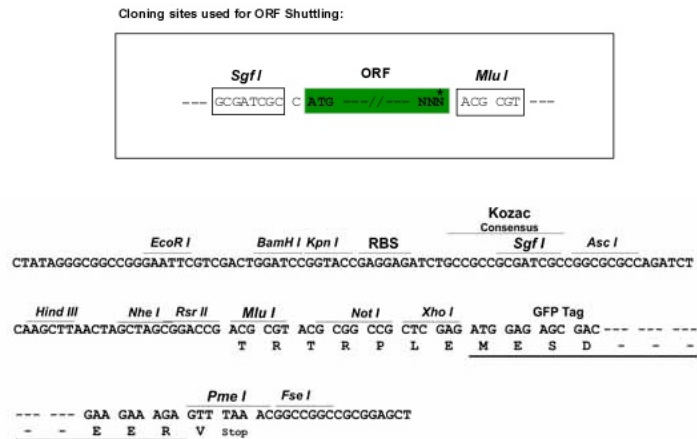
MEPGLQQAGSCGAPSPDPAMQVQPGSVASPWSTRPWRSTSRSYFYLTSTALVCLVVAVAILVLVVQKK  
 DSTPNTEKAPLKGGNCSEDLFCTLKSTPSKKSWAYLQVSKHLNNTKLSWNEDGTIHGLIYQDGNLIVQF  
 PGLYFIVCQLQLFLVQCSNHSVDLTLQLLINSKIKKQTLVTVCESGVQSKNIYQNL SQFLLHYLQVNSTIS  
 VRVDNFQYVDTNTFFPLDNVLSVFLYSSSD

TRTRPLE - GFP Tag - V

**Chromatograms:** [https://cdn.origene.com/chromatograms/ja1710\\_e09.zip](https://cdn.origene.com/chromatograms/ja1710_e09.zip)

**Restriction Sites:** SgfI-MluI

**Cloning Scheme:**



**ACCN:** NM\_009403

**ORF Size:** 717 bp

**OTI Disclaimer:** The molecular sequence of this clone aligns with the gene accession number as a point of reference only. However, individual transcript sequences of the same gene can differ through naturally occurring variations (e.g. polymorphisms), each with its own valid existence. This clone is substantially in agreement with the reference, but a complete review of all prevailing variants is recommended prior to use. [More info](#)

**OTI Annotation:** This clone was engineered to express the complete ORF with an expression tag. Expression varies depending on the nature of the gene.

**Components:** The ORF clone is ion-exchange column purified and shipped in a 2D barcoded Matrix tube containing 10ug of transfection-ready, dried plasmid DNA (reconstitute with 100 ul of water).

**Reconstitution Method:**

1. Centrifuge at 5,000xg for 5min.
2. Carefully open the tube and add 100ul of sterile water to dissolve the DNA.
3. Close the tube and incubate for 10 minutes at room temperature.
4. Briefly vortex the tube and then do a quick spin (less than 5000xg) to concentrate the liquid at the bottom.
5. Store the suspended plasmid at -20°C. The DNA is stable for at least one year from date of shipping when stored at -20°C.

**RefSeq:** [NM\\_009403.3](#), [NP\\_033429.1](#)

**RefSeq Size:** 2228 bp

**RefSeq ORF:** 720 bp

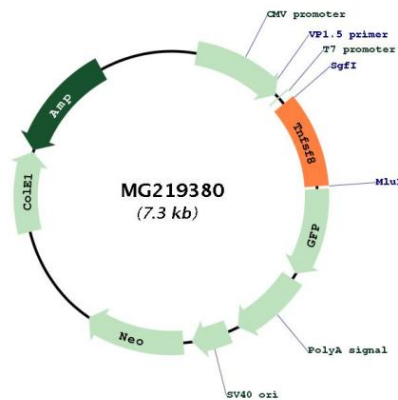
**Locus ID:** 21949

**UniProt ID:** [P32972](#)

**Cytogenetics:** 4 34.06 cM

**Gene Summary:** Cytokine that binds to TNFRSF8/CD30. Induces proliferation of T-cells.[UniProtKB/Swiss-Prot Function]

**Product images:**



Circular map for MG219380