

Product datasheet for **MG219369**

Clec4g (NM_029465) Mouse Tagged ORF Clone

Product data:

Product Type:	Expression Plasmids
Product Name:	Clec4g (NM_029465) Mouse Tagged ORF Clone
Tag:	TurboGFP
Symbol:	Clec4g
Synonyms:	4930572L20Rik
Mammalian Cell Selection:	Neomycin
Vector:	pCMV6-AC-GFP (PS100010)
E. coli Selection:	Ampicillin (100 ug/mL)
ORF Nucleotide Sequence:	>MG219369 representing NM_029465 Red=Cloning site Blue=ORF Green=Tags(s)

TTTTGTAATACGACTCACTATAGGGCGGCCGGAATTCGTCGACTGGATCCGGTACCGAGGAGATCTGCC
GCC**CGCATCGCC**

ATGAACACTGGTGAATACAACAAGCTGGGCAGTGCAATTGAAGAGGTCTCCAGAGGGCAATTGGGACGTT
GGGAGTGCTACAAACAAGACTTTTCTTCTGGTCTTGGCTCTGCTGGTGGCCACAGTTCTATGGGCTCT
CATTCTGAGCACCTACTGTCCAGTGCCTCCAGCAAGCTCAGGGTGTGCTCAGCCACCAGGACCTGCTG
AGGACAAATGCCTCAGAGCAGAAGATGACGTTGAGTTCCTGAAGGATGATATCGGAGCCTGCAGGAATT
GCTGCTCCGTGACAAAAGCGCAGTTGCAAACCACACTGGCGGAGTTTAAGGACATACAAGCAAAGTTGAT
GGAGCAGGAGAGCATCCTGAAAGAAGTGAAGAGCGTGTGACCCAGGACTTGGCTAAAGCAAGCAGAGAG
CGTGAGAACATCCGAGTGAGCTGTTCCAGGCACTGGAAGCTGTCAAGCGCCAGAACAGCTCCTGTGAGC
AGTGCCCAACATCATGGCTACCTTCCAAGGTTCTGCTACTATTTCTCTGAGACACAGGCCACATGGGA
TACAGCACAAAGCTACTGTGGAGGCCAGGGTGCCCATCTGGTGATTGTCAGAGGCCTGAACGAGCAGGGC
TTCCTGAGTCAGCACACAGTGGCCGGGGCTATTGGTTGGGTCTGAGGGCAGTTCGCCACCTCAACAAGA
TTCAAGGCTACCGGTGGGTAGATGGAGCCTCACTCAACTCAGCCACTGGAAGTCTGGAGAGCCCAATGA
TTCCAGAGGACATGAGGACTGTATCATGATGCTGCACTCGGGGCTGTGGAATGATGCACCATGTACCAAT
GAGAGAGATGGCTGGATCTGTGAGAAGAGGAGCAGTTGCTAC

ACGCGTACGCGGCCGCTCGAG - GFP Tag - GTTTAA



[View online »](#)

Protein Sequence: >MG219369 representing NM_029465
 Red=Cloning site Green=Tags(s)

MNTGEYNKLGSAIEEVSRGQLGRWECYKQRLFFLVLALLVATVLWALILSTLLSSASSKLRVLLSHQDLL
 RTNASEQKMTLSSLKDDIGACRNCCSVTKAQLQTTLAEFKDIQAKLMEQESILKELQERVTDLAKASRD
 RENIRSELFQALEAVKRQNSSCEQCPSWLPFQGSYYFSETQATWDTAQSYCGGQGAHLVIVRGLNEQG
 FLSQHTRGRGYWGLRAVRHLNKIQGYRWVDGASLNF SHWNSGEPNDSRGHEDCIMMLHSLWNDAPCTN
 ERDGWICEKRSSCY

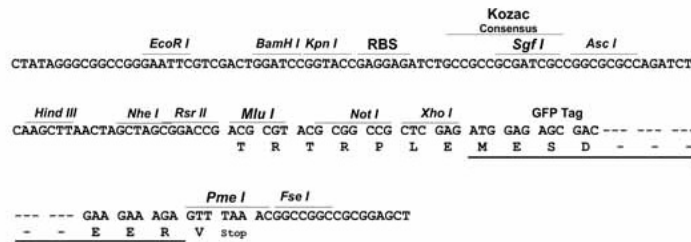
TRTRPLE - GFP Tag - V

Restriction Sites:

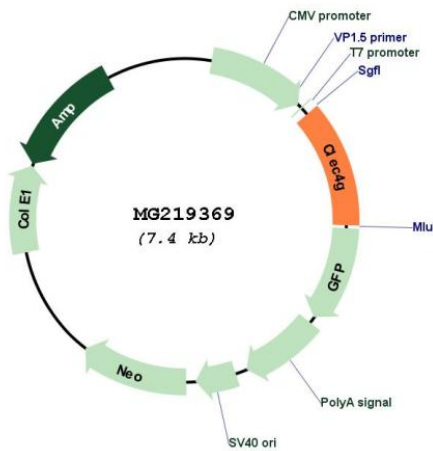
SgfI-MluI

Cloning Scheme:

Cloning sites used for ORF Shuttling:



Plasmid Map:



ACCN: NM_029465

ORF Size: 882 bp

OTI Disclaimer:	The molecular sequence of this clone aligns with the gene accession number as a point of reference only. However, individual transcript sequences of the same gene can differ through naturally occurring variations (e.g. polymorphisms), each with its own valid existence. This clone is substantially in agreement with the reference, but a complete review of all prevailing variants is recommended prior to use. More info
OTI Annotation:	This clone was engineered to express the complete ORF with an expression tag. Expression varies depending on the nature of the gene.
Components:	The ORF clone is ion-exchange column purified and shipped in a 2D barcoded Matrix tube containing 10ug of transfection-ready, dried plasmid DNA (reconstitute with 100 ul of water).
Reconstitution Method:	<ol style="list-style-type: none">1. Centrifuge at 5,000xg for 5min.2. Carefully open the tube and add 100ul of sterile water to dissolve the DNA.3. Close the tube and incubate for 10 minutes at room temperature.4. Briefly vortex the tube and then do a quick spin (less than 5000xg) to concentrate the liquid at the bottom.5. Store the suspended plasmid at -20°C. The DNA is stable for at least one year from date of shipping when stored at -20°C.
RefSeq:	NM_029465.3 , NP_083741.1
RefSeq Size:	1239 bp
RefSeq ORF:	885 bp
Locus ID:	75863
UniProt ID:	Q8BNX1
Cytogenetics:	8 A1.1
Gene Summary:	Binds mannose, N-acetylglucosamine (GlcNAc) and fucose, but not galactose, in a Ca(2+)-dependent manner.[UniProtKB/Swiss-Prot Function]