

Product datasheet for **MG219361**

Slc6a14 (NM_020049) Mouse Tagged ORF Clone

Product data:

Product Type:	Expression Plasmids
Product Name:	Slc6a14 (NM_020049) Mouse Tagged ORF Clone
Tag:	TurboGFP
Symbol:	Slc6a14
Synonyms:	1110007A17Rik; 9030613J17Rik; ATB0plus; CATB0plus
Mammalian Cell Selection:	Neomycin
Vector:	pCMV6-AC-GFP (PS100010)
E. coli Selection:	Ampicillin (100 ug/mL)



[View online »](#)

ORF Nucleotide Sequence:

>MG219361 representing NM_020049
 Red=Cloning site Blue=ORF Green=Tags(s)

TTTTGTAATACGACTCACTATAGGGCGGCCGGAATTCGTCGACTGGATCCGGTACCGAGGAGATCTGCC
 GCCCGCATCGCC

ATGGACAGATTGAAGTGCCCAACTTCTCAAGTGCAGACAGAAGGAGAAAAGTGACAGCTTCATCCGAGA
 ACTTCCATGTTGGTGAAAATGATGAAAATCAGGAACGTGGTAACTGGTCCAAAAAGTCAGATTATCTTCT
 TTCCATGTTGGCTATGCAGTGGGATTGGCAATGTGTGGAGATTCCCATATCTGACCTACACCAATGGC
 GGAGGTGCTTTCTTGATACCCTATGCAATCATGCTAGCATTGGCTGGTCTGCCTTTGTTCTTTCTGGAAT
 GTTCACTGGGACAATTTGCTAGCTTAGGTCCAGTTTCAGTTTGGAGGATTTGCCACTGTTTCAAGGTGT
 GGGAAACACGATGGTCTGATATCCGTTTTGTGGCAATCTATTATAATGCATAATTGCCTACAGCCTT
 TACTACTGTTTCTTTTCAAAGTGTATTGCCGTGGGCAAATGTTCTTCTGGGCAGACGAAAAC
 GTAGCAGAACCAATAGTAAGTGGCTGTAATGTGAGCATAGGGCAGGAGAGATGTTTATGAATATAAG
 CTGGGTAATACCAACAATCTCACCTGCTGAATGGTAGTGAAGTTTTTCGGCCAGGACAACCTCCAGT
 GAACAGTATTGGGATAAAGTGACACTTCAGAGGTCAAGTGAATGGATGAACTGGAGTTGTTGTGTGGT
 ATTTAGCACTTTGCCTTCTTCTGGCTTGGCTCATAGTTGGAGCAGCACTGTTTAAAGGAATCAAATCCTC
 TGGCAAGGTGGTATATTTACAGCTTTTTCCCATATGTGGTCTTCTCATTCTGTTAATACGAGGTGCA
 ACTTTGGAGGGTGCATCAAAAGGCATTTTCAATACATTGGAGCAGCACTCAAAATTTACAAAACAAAGAG
 AAGCTGAGGTCTGGAAGGATGCTGCCACTCAGATATTTTATCCCTTTCTGTGGCTTGGGGTGGCCTAGT
 GGCTCTGCATCTTACAACAAGTTACAACAACACTGTTACTCTGATGCCATTATAGTTTGGCTTGACAAAC
 TGCCCTACTAGTGTGTTGCTGGATTTGCTATATTTTCTATTCTGGGACACATGGCTCATATATCTGGAA
 AAGAAGTCTCAAGTTGTAATAAATCAGGATTTGACTTGGCATTTCCTATCCTGAAGCTCTAGCTCA
 ACTCCCAGCTGGTCCATTCTGGTCCATATATTTTTCTTCATGCTTTTAAACATTGGGCCTTGATTCTCAG
 TTTGCTTCTATTGAAACAATTACAACAACATTTCAAGATTTGTTTCCCAAAGCAATGAAACGCATGAGGG
 TTCCTATAACTTTGGGATGCTGCTTGTATTTGTTTCTCCTTGGCCTCCTCTGTGTGACTCAGGCTGGAAT
 TTAAGTGGTTCATTTGATTGATCACTTCTGTGCTGGATGGGGAATTTAATTGCTGCTATCTTGAAAT
 GCAGGAATCATCTGGATTTATGGAGGAAATAGATTCATTGAAGATATAGAAATGATGATTGGAGCAAAAA
 GATGGATATTCTGGCTTTGGTGGAGAGCTTGTGGTGTGTCATCACTCCTATTCTGTTGTCTGCAATTCT
 AGTCTGGTCACTGGTAAATTTACAGACCTGATTATGCTGATATCCATATCCTGACTGGGGAGTTGCT
 CTTGGCTGGTGTATGATCAATTTCTGCATTATTTGGATACCAATTATGGCTATCATAAAAAATAGTTCAGG
 CAGAAGGAAACATACTTACGCGTATCATAAGCTGCTGTAGACCAGCTTCAACTGGGGTCCATACCTGGA
 AAAACATCGTGGGGAGAGATACAGAGACATGGCTGAACCTGCAAAGGAGACTGACCACGAAATACCTACT
 ATTAGTGGCAGTACAAAACCAGAA

ACGCGTACGCGGCCGCTCGAG - GFP Tag - GTTTAA

Protein Sequence:

>MG219361 representing NM_020049
 Red=Cloning site Green=Tags(s)

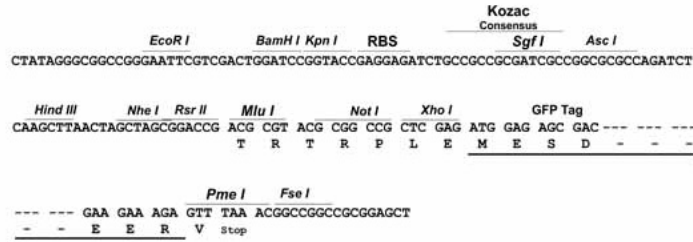
MDRLKCPNFFKCRQKEKVTASSENHVGENDENQERGNWSKSDYLLSMVGYAVGLGNVWRFPYLTYTNG
 GGAFILIPYAIMLALAGLPLFFLECSLGFASLGPVSVWRILPLFQVGVITMVLISVFAIYYNVI IAYSL
 YYLFAFQSVLPWANCSSWADENCSTRPIVTGCNVSIGAGEMFMNISWVNTNNTCLNGSEVFRPGQLPS
 EQYWDKVTLQRSSGMDTGVVVWYLALCLLLAWLIVGAALFKGIKSSGKVVYFTALFPYVLLILLIRGA
 TLEGASKGISYYIGAQSNTKLREAEVWKDAATQIFYSLSVAVWGLVALSSYNKFNNNCYSDAIIVCLTN
 CLTSVFAFIFILGHMAHISGKEVSQVVKSGFDLAFIAYPEALAQLPAGPFWILFFMLLTLGLDSQ
 FASIIETITTTFDLFPKAMKRMVPITLGCCLILFLLGLLCVTVQAGIYVWHLIDHFCAGWGILIAAILEI
 AGIWIWYGGNRFIEDIEMMIGAKRWIFLWWRACWFVITPILLSAILVWSLVKFRHPDYADIPYPDWGVA
 LGWCMIIIFCIIWIPIMAIKIVQAEGNILQRIISCCRPASNWGPYLEKHRGERYRDMAPAKETDHEIPT
 ISGSTKPE

TRTRPLE - GFP Tag - V

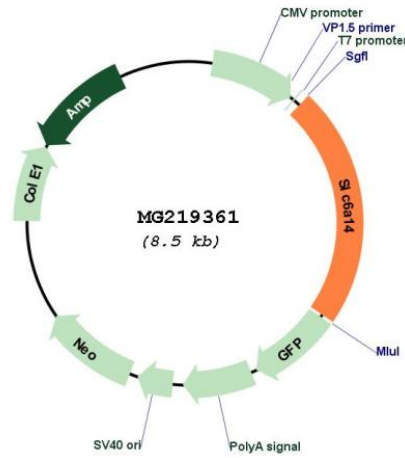
Restriction Sites: Sgfl-MluI

Cloning Scheme:

Cloning sites used for ORF Shutting:



Plasmid Map:



ACCN: NM_020049

ORF Size: 1914 bp

OTI Disclaimer:	The molecular sequence of this clone aligns with the gene accession number as a point of reference only. However, individual transcript sequences of the same gene can differ through naturally occurring variations (e.g. polymorphisms), each with its own valid existence. This clone is substantially in agreement with the reference, but a complete review of all prevailing variants is recommended prior to use. More info
OTI Annotation:	This clone was engineered to express the complete ORF with an expression tag. Expression varies depending on the nature of the gene.
Components:	The ORF clone is ion-exchange column purified and shipped in a 2D barcoded Matrix tube containing 10ug of transfection-ready, dried plasmid DNA (reconstitute with 100 ul of water).
Reconstitution Method:	<ol style="list-style-type: none">1. Centrifuge at 5,000xg for 5min.2. Carefully open the tube and add 100ul of sterile water to dissolve the DNA.3. Close the tube and incubate for 10 minutes at room temperature.4. Briefly vortex the tube and then do a quick spin (less than 5000xg) to concentrate the liquid at the bottom.5. Store the suspended plasmid at -20°C. The DNA is stable for at least one year from date of shipping when stored at -20°C.
RefSeq:	NM_020049.4 , NP_064433.3
RefSeq Size:	3433 bp
RefSeq ORF:	1917 bp
Locus ID:	56774
UniProt ID:	Q9JMA9
Cytogenetics:	X A2
Gene Summary:	Mediates the uptake of a broad range of neutral and cationic amino acids (with the exception of proline) in a Na(+)/Cl(-)-dependent manner.[UniProtKB/Swiss-Prot Function]