

## Product datasheet for **MG219337**

### **B3galt6 (NM\_080445) Mouse Tagged ORF Clone**

#### Product data:

Product Type:	Expression Plasmids
Product Name:	B3galt6 (NM_080445) Mouse Tagged ORF Clone
Tag:	TurboGFP
Symbol:	B3galt6
Synonyms:	BB129894; GalTII
Mammalian Cell Selection:	Neomycin
Vector:	pCMV6-AC-GFP (PS100010)
E. coli Selection:	Ampicillin (100 ug/mL)
ORF Nucleotide Sequence:	>MG219337 representing NM_080445 Red=Cloning site Blue=ORF Green=Tags(s)

TTTTGTAATACGACTCACTATAGGGCGGCCGGAATTCGTCGACTGGATCCGGTACCGAGGAGATCTGCC  
GCC**CGGATCGCC**

ATGAAGGTATTCCGGCGCGCTTGGCGGCACCGGGTGGCGCTGGGCCTAGGCGGCCTGGCGTTCTGCGGCA  
CCACTCTGTTGTACCTGGCGCGCTGCGCTTCCGAGGGCGAGACGCCCTCCGCTTCCGGAGCCGCTCGGCC  
CCGCGCTAAGGCCTTCTGGCGGTGCTGGTGGCCAGTGC GCCCGCGGGTGGAGCGCCGACCGCAGTG  
CGCAGCACGTGGCTGGCACCGGAGAGCGTGGCGACCCGAGGACGTGTGGCGCGCTTCCCGTGGCA  
CTGGCGGCTTAGGCTCGGAGGAGCGCGCGCTTGTAGCTCGAGCAGGCGCAGCACGGGGACCTGCTGCT  
GCTGCCCGCCCTGCGCGACGCCTACGAGAACCTCACGGCCAAGTCTGGCCATGCTGACCTGGCTGGAT  
GAGCGCGTGGACTTCGAGTTCGTGCTCAAGGCGGACGACGACTCCTTTGCGCGCCTGGACGCTATCTGG  
TGGACCTACGCGCACGGGAGCCCGCACGCCCGCGCGCCTCTACTGGGGCTTCTTTCCGGGCGCGGGCG  
CGTCAAGCCGGGAGGTCGCTGGCGAGAAGCAGCCTGGCAACTCTGCGACTACTACCTGCCCTACGCGTTG  
GGCGGTGGCTATGTCCTTCTGCGGACCTGGTGCATTACCTGCGCCTCAGCCGCGAGTACCTGCGCGCT  
GGCACAGTGAAGACGTATCGCTGGGCACCTGGCTGGCACCAAGTGGATGTGCAACGGGAGCAGCACCCACG  
CTTCGACACGGAGTACAAATCTCGAGGCTGCAACAATCAGTATCTGGTGACACACAAGCAAAGCCAGAG  
GACATGTTGGAGAAGCAACAGATGTTGCTGCATGAGGGCCGTTGTGCAAGCATGAGGTGAGTTGGCC  
TTTCTATGCTATGACTGGTCAGCTCCACCCTCCAGTGTGCCAGCGCAAGGAGGGCGTTCC

AGCGGACCGACGCGTACGCGGCCGCTCGAG - GFP Tag - GTTTAA



[View online »](#)

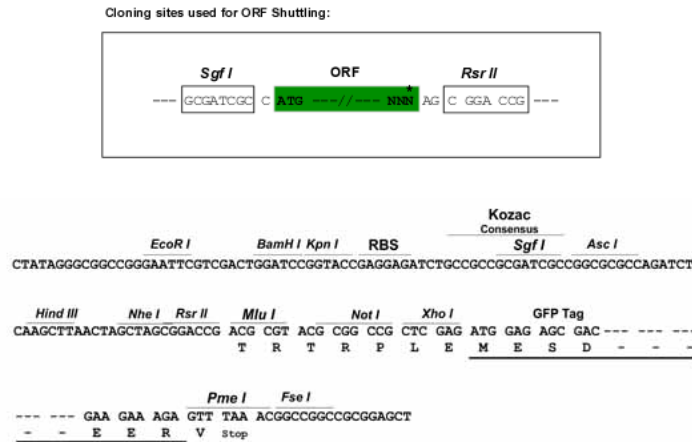
**Protein Sequence:** >MG219337 representing NM\_080445  
Red=Cloning site Green=Tags(s)

MKVFRRWRHRVALGLGGLAFCGTTLLYLARCASEGETPSASGAARPRAKAFLAVLVASAPRAVERRTAV  
 RSTWLAPEERRGGPEDVWARFVAVGTGGLGSEERRALELEQAQHGDL L L L PALRDAYENLTAKVLA MLTWLD  
 ERVDFEFVLKADDDSFARLDA I L VDLRAREPARRRRL YW G F F SGRGRVKP GGRWREAAWQLCDYYLPYAL  
 GGGYVLSADLVHYLR LRSREYLRAWHSEVDVSLGTWLA PVDVQREHDP RFDTEYKSRGCNNQYL VTHKQSP E  
 DMLEKQQLLHEGRLCKHEVQLRLSYVYDWSAPPSQCCQRKEGVP

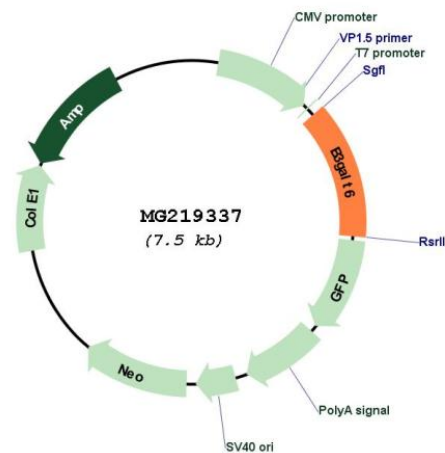
SGPTRTRRLE - GFP Tag - V

**Restriction Sites:** SgfI-RsrII

**Cloning Scheme:**



**Plasmid Map:**



**ACCN:** NM\_080445

**ORF Size:** 975 bp

<b>OTI Disclaimer:</b>	The molecular sequence of this clone aligns with the gene accession number as a point of reference only. However, individual transcript sequences of the same gene can differ through naturally occurring variations (e.g. polymorphisms), each with its own valid existence. This clone is substantially in agreement with the reference, but a complete review of all prevailing variants is recommended prior to use. <a href="#">More info</a>
<b>OTI Annotation:</b>	This clone was engineered to express the complete ORF with an expression tag. Expression varies depending on the nature of the gene.
<b>Components:</b>	The ORF clone is ion-exchange column purified and shipped in a 2D barcoded Matrix tube containing 10ug of transfection-ready, dried plasmid DNA (reconstitute with 100 ul of water).
<b>Reconstitution Method:</b>	<ol style="list-style-type: none"><li>1. Centrifuge at 5,000xg for 5min.</li><li>2. Carefully open the tube and add 100ul of sterile water to dissolve the DNA.</li><li>3. Close the tube and incubate for 10 minutes at room temperature.</li><li>4. Briefly vortex the tube and then do a quick spin (less than 5000xg) to concentrate the liquid at the bottom.</li><li>5. Store the suspended plasmid at -20°C. The DNA is stable for at least one year from date of shipping when stored at -20°C.</li></ol>
<b>RefSeq:</b>	<a href="#">NM_080445.4</a> , <a href="#">NP_536693.1</a>
<b>RefSeq Size:</b>	3213 bp
<b>RefSeq ORF:</b>	978 bp
<b>Locus ID:</b>	117592
<b>UniProt ID:</b>	<a href="#">Q91Z92</a>
<b>Cytogenetics:</b>	4 E2
<b>Gene Summary:</b>	Beta-1,3-galactosyltransferase that transfers galactose from UDP-galactose to substrates with a terminal beta-linked galactose residue. Has a preference for galactose-beta-1,4-xylose that is found in the linker region of glycosaminoglycans, such as heparan sulfate and chondroitin sulfate. Has no activity towards substrates with terminal glucosamine or galactosamine residues (By similarity).[UniProtKB/Swiss-Prot Function]