

## Product datasheet for **MG219324**

### **Ppef1 (NM\_011147) Mouse Tagged ORF Clone**

#### **Product data:**

Product Type:	Expression Plasmids
Product Name:	Ppef1 (NM_011147) Mouse Tagged ORF Clone
Tag:	TurboGFP
Symbol:	Ppef1
Synonyms:	PPEF-1
Mammalian Cell Selection:	Neomycin
Vector:	pCMV6-AC-GFP (PS100010)
E. coli Selection:	Ampicillin (100 ug/mL)



[View online »](#)

**ORF Nucleotide Sequence:**

>MG219324 representing NM\_011147  
 Red=Cloning site Blue=ORF Green=Tags(s)

TTTTGTAATACGACTCACTATAGGGCGGCCGGAATTCGTCGACTGGATCCGGTACCGAGGAGATCTGCC  
 GCC**GCGATCGCC**

ATGGGCTGTGGCACTTCTTCAAAAAAGGCAACAAATCTAAGAAAGTGATAAAAGCCGCTTAGTCATCC  
 AAAATTGGTACCGCGGTACAGAGCTCGACTGAGGGTCAGACAGCATTATGCCCTCGCCATCTCCAGTC  
 TATTGAATATTCTGACGAGCAAGGCCAAATGCAGCTATCCAGCTTCTTTTCGTTTCATGTTGGAAAACTAC  
 ACAAAGACAAATAATGAAGATTCAGCATTAGTAACTCGAATTTTTGACAACACCAGGCGGAAAAGCCAAA  
 TCAAGGATAGAGATGACTTTTTGGGGTTGATAGAAGTGCCTGACTCCTATGATGGTCTCGGCTGCAGTT  
 TCCTCTGACGTTTACTGACATCCATATACTTCTTCAGGCCTTCAAGCAACAGCAGATACTTCATGCTCAC  
 TACGCTTAGAGGTGCTATTTGAAGCTAGGAAAGTCTGAAGCAAATGCCGAATTTCTCTCATGTAAAA  
 CCTTTCCCGCCAAAGAGATAACAATATGTGGTATTTGCATGGGAACTGGATGATCTTATGCTGATTTT  
 CTATAAGAAATGGCCTGCCTTCAGAGAACAATCCATACGTTTTCAATGGTGACTTTGTAGATCGAGGAAAC  
 AATTCCATGGAGATCCTAATGATCCTGCTTGTGTTTTCTTGTCTACCCCTCTGACCTGCACCTCAATA  
 GAGGGAACCATGAAGACTTTATGATGAACCTGAGGTATGGCTTCAAAAAAGAAATTTTACAAAAATACAA  
 GCTACACGGGAGAAAAATCTTACAAGTCTTGAAGAAGTCTATACCTGGCTCCCAATCGGTACAATTATT  
 GACAACGAAATCCTGGTCATACATGGTGGGATACAGAATCCACAGACTTGAATACACTCCACCAGTTAC  
 AAAGAAATAAAATGAAATCTGTGTTGATGCCGCCAGTGTGGGAAATCAAGAGACTGGCGAAAAGAGAAA  
 TAAATCAGCGTCAAATATGTTGAACCAAGGAAGTTGAACCAGACAAGACTCCTTCTGAAGACTTGACA  
 AAGCAAGAATGGGAACAAATAGTTGACATCTGTGGAGTGACCCAGAGGCAAAAAAGGCTGTTATCCAA  
 ACACAAGCCGAGGAGGGGCTGCTATTTTGGACCAGATGTTACCTCTAAGTTCTTAGTAAAAACAGTT  
 GAAGATGCTCATTAGGTCTCATGAGTGTAAACCGACGGTATGAAGTCTCTCATGATGGAAAGGTCATT  
 ACTGTATTTTCTGCTTCTAATTATTATGAAGAAGCAGCAACCGAGGAGCTTACATCAGACTAAGTTATG  
 GTACAATGCCACAATTTTCCAGTACCAAGTAACTAGTACATCATGCCTGAACCTCTTCCACAAAGGAT  
 GAATGCTATGGAATCCAGTGCTTCAAGATACTAAAGGAAAAATGATTTACGAAAACTGATCTCATC  
 AACGCTTTCGAGCTCCGTGACCACAGTAGGTGAGGAAGGATTTTATTGGCCGAGTGGGCATTTTCTATGG  
 AGAACATTTTGGGCTGAACTTACCATGGAGATCTCTAAGTTACACCTGGTAACCATGATTCCAGCGG  
 AAGTGTGACTACATGTCCAGCTTTCAGCATATCCGATTTGAAAAGCCTACGAAAGATATGAAGTCCAAT  
 CTAAGTAACTATGTACAGATACCGATCTGACCTGAAAATCATATTTAATATCATCGACAGTGATCAAT  
 CAGGTCTGATCTCCATGGATGAATTTCCGACCATGTGGAACTTTTCAATGCTCATTACAAGCTCATAT  
 AGATGATTCCAAATGATGAGCTTGCCAGCATAGTGGACTTCAACAAAGATGGCAACATCGACTTAAT  
 GAGTTTTTAAAGGCTTCTATGTAGTACATAAATATGATAAGCCAGGACCAGTCTTGCT

**ACGCGT**ACGCGGCCGCTCGAG - GFP Tag - GTTTAA

**Protein Sequence:**

>MG219324 representing NM\_011147  
 Red=Cloning site Green=Tags(s)

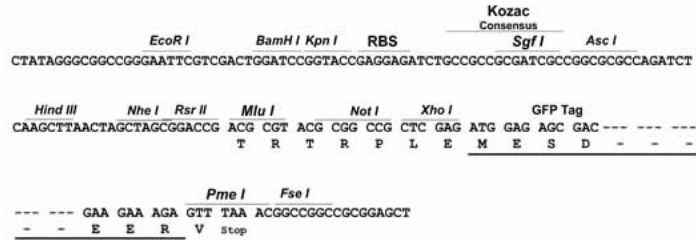
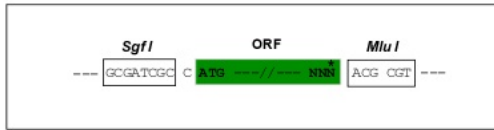
MCGTSSKKGNKSKKVIKAAALVIQNWYRRYRRLRVRQHYALAIQFSIEYSDEQGMQLSSFFSFMLENY  
 TKTNNEDSALVTRIFDNTRRESQIKDRDDLGLIEVPDSYDGPRLQFPLTFDIHILLQAFKQQQILHAH  
 YVLEVLFEARKVLKQMPNFSHVKTFFPAKEITICGDLHGKLDLMLIFYKNGLPSENPNPYVFNDFVDRGN  
 NSMEILMILLVCFLLVYPSDLHLNRGNHEDFMMNLRYGFTKEILQKYLHGRKILQVLEEVYTWLPIGTII  
 DNEILVIHGGISESTDLNTHLQLQRNKMKSVMPPVLGNETGEKRNKSASNYVEPRKVEPKTPSEDLT  
 KQEWEIFVDILWSDPRGKGCYPNTSRGGCYFGPDVTSKVL SKNQLKMLIRSHECKPDGYEVSHDGKVI  
 TVFSASNYEEGSRNGAYIRLSYGTMPQFFQYQVTSTSCLNPLHQRNAMESSAFKILKEKMSRKTDLI  
 NAFELRDHSRSGRISLAEWAFSMENILGLNLPWRSLSSHLVTIDSSGSVDYMSFFDDIRIEKPTKDMKSN  
 LTETMYRYSDLKIIIFNIIDSDQSGLISMDEFRTMWWKLFNAHYKAHIDDSQIDELASIVDFNKDGNIDFN  
 EFLKAFYVVHKYDKPGTSLA

**TRTRPLE** - GFP Tag - V

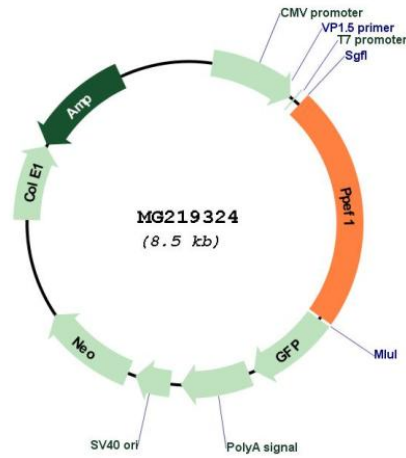
Restriction Sites: SgfI-MluI

Cloning Scheme:

Cloning sites used for ORF Shutting:



Plasmid Map:



ACCN: NM\_011147

ORF Size: 1950 bp

<b>OTI Disclaimer:</b>	The molecular sequence of this clone aligns with the gene accession number as a point of reference only. However, individual transcript sequences of the same gene can differ through naturally occurring variations (e.g. polymorphisms), each with its own valid existence. This clone is substantially in agreement with the reference, but a complete review of all prevailing variants is recommended prior to use. <a href="#">More info</a>
<b>OTI Annotation:</b>	This clone was engineered to express the complete ORF with an expression tag. Expression varies depending on the nature of the gene.
<b>Components:</b>	The ORF clone is ion-exchange column purified and shipped in a 2D barcoded Matrix tube containing 10ug of transfection-ready, dried plasmid DNA (reconstitute with 100 ul of water).
<b>Reconstitution Method:</b>	<ol style="list-style-type: none"> <li>1. Centrifuge at 5,000xg for 5min.</li> <li>2. Carefully open the tube and add 100ul of sterile water to dissolve the DNA.</li> <li>3. Close the tube and incubate for 10 minutes at room temperature.</li> <li>4. Briefly vortex the tube and then do a quick spin (less than 5000xg) to concentrate the liquid at the bottom.</li> <li>5. Store the suspended plasmid at -20°C. The DNA is stable for at least one year from date of shipping when stored at -20°C.</li> </ol>
<b>RefSeq:</b>	<a href="#">NM_011147.1</a> , <a href="#">NP_035277.1</a>
<b>RefSeq Size:</b>	2483 bp
<b>RefSeq ORF:</b>	1953 bp
<b>Locus ID:</b>	237178
<b>UniProt ID:</b>	<a href="#">O35655</a>
<b>Cytogenetics:</b>	X 73.95 cM
<b>Gene Summary:</b>	May have a role in the recovery or adaptation response of photoreceptors. May have a role in diverse sensory neurons and in development.[UniProtKB/Swiss-Prot Function]