

Product datasheet for **MG219315**

Trim16 (NM_053169) Mouse Tagged ORF Clone

Product data:

Product Type:	Expression Plasmids
Product Name:	Trim16 (NM_053169) Mouse Tagged ORF Clone
Tag:	TurboGFP
Symbol:	Trim16
Synonyms:	9130006M08Rik; AI482483; EBBP
Mammalian Cell Selection:	Neomycin
Vector:	pCMV6-AC-GFP (PS100010)
E. coli Selection:	Ampicillin (100 ug/mL)



[View online »](#)

ORF Nucleotide Sequence:

>MG219315 representing NM_053169
 Red=Cloning site Blue=ORF Green=Tags(s)

TTTTGTAATACGACTCACTATAGGGCGGCCGGGAATTCGTCGACTGGATCCGGTACCGAGGAGATCTGCC
 GCC**GCGATCGCC**

ATGGCTGAATTGGATCTGATTGCCCCGGGGCCTCTGACCGGGTCACTGCTCACCCTTTGGCCCTCTCG
 GCCCAGACCCTGTGTGAGCTATCCAGCAGAAAAAGAAGATGCGGACCCTCTCAGCAAGTCAGGTGAGGA
 AACCCAGGAGCAGGGTCATGACCCCGCAGAGGTCGGGGCTCCTGGTGAAGAGGATCAGATCTTGTGTGAC
 TTCTGTCTTGGGGCCAGCAGAGTAAGGGCAGTGAATCCTGTCTGACCTGCATGGTGAAGTACTGTGAGG
 AGCACCTGCGGCCACACCAGGAGAACAGCAAATGCACAGCCACCAGCTAACCGAACCCGCAAAGGACCA
 GGATCTACGCACCTGCCCTGCCACCACAGCCCTTTGGTTTCCTTCTGCCACACGCACCAGCAGTGTATC
 TGCCAGGAATGCGGGGAGGGTGAACACAGAGGCGACAGTACTGTCTCCCTGGATGCAGCCCGCAGGAACA
 AAGAGGTGGACCTTCGGTGTATGCAGTTGGACCTGGAGCAGAAGCTTAAGTTGAATGAAAATGCCATTGC
 CAGGCTCCAAGCTAACCATAAAGTCTGTTTTGGTGTGCGGTGTGAGGTGAAGGTGTAGTGAAGAGAAG
 TTTGGGGAACCTCTCGCAGCTGTACGGAAGGCCAGGCAGATGTGATGGTCTTCCAGAGGAGAAAAGAAC
 AGGCTGCACTGAATCAAGTCAACAGCATCAAAACCCATCTGGAGCACAGGAGCCTCGAGATGGAGAAAAG
 CAAGCAGGAGCTGGAGAGGCTGGCCGCCATCAGCAACACTGTGCTGTTCTCGGAGGAGTACTGCAAGCTC
 AAGAAGACAGAGGACACTGCCTCCCCTAGCATTACATAGGGCTGAAGGACAAAATCTCAGGCATCCGCA
 AGGTATCACAGATCAACTCTGAACCTTGATCCAATTGCTAGAAAAGCTATAAGGAAAAGCTCCAGGAATT
 TTCCAGGGAAGAGGAATATGACATCAGAAGTCAAGTGTCTGCCATTGTCCAGCGCAAGTATAGGACCTCG
 AAACCTGAGCCAGAACCCGGGATGAGTTTCTTCAATATGCCTGTGACATCACGTTTGACCCAGACACAG
 CACACAGGTACCTTCGCCTGCAGGAGGACCAACCGCAAGGTCAACCAACACCAGCCCTGGGAAACCCCTA
 CCGGACCTCCCAAGTAGGTTTCTGCACTGGCGCAGGTGTCTCCAACAGAGCCTGTACTGCACAGA
 TATTATTTGAGGTGGAGCTCTCTGGAGGTGGACCTATGTTGGCCTGACCTGCAAGGCATTGACCGTA
 AGGGGGAAGAACGGAACAGCTGCATTTCTGAAAATAGCTTCTCCTGGAGCATCCATTGGAATGGGAAGGA
 GTTCACAGCCTGGCACAGTGACACAGAGACCCCGCTCAAGGTGAGCCCTTCAAGAGGCTCGGTATCTAT
 GTAACCTCCCAGGAGGAATCCTTCTCTATGGTGTAGAGTATGATGCTATGACTCTGATTACAAGT
 TTGACTGCAAGTTCTCAGAGCCGGTCTATGCTGCTTTCTGGCTGTCTAAGAAAGAAAACGCCATCCGGAT
 TGTGGATCTGGAGAGGAGCCCGAGAAGCCAGCTGGGTCTCTGTGGAGGCTGCTCC

ACGCGTACGCGGCCGCTCGAG - GFP Tag - GTTTAA

Protein Sequence:

>MG219315 representing NM_053169
 Red=Cloning site Green=Tags(s)

MAELDLIAPGPLTGVTAHPLAPLGPDPVSAIPAEEKEDADPLSKSGEETQEQGHDPAEVGPAGEEDQILCD
 FCLGASRVRAVKSCLTCMVNYCEEHLRPHQENSKLHSHQLTEPAKDQDLRTPAHHSPLVSFCHTHQQCI
 CQEQEGEGEHRGDSTVSLDAARRNKEVDLRMQLDLEQKLKLNENAIARLQANHKSVLVSVSEVKVVAEEK
 FGELLAAVRKAQADVMVFLEEKEQAALNQVNSIKTHLEHRSLEMEKSKQELERLAAISNTVLFLEEYCKL
 KKTEDTASPSIYIGLKDKLSGIRKVIDSTLNLIQLLLESYKEKLQEF SREEEYDIRTQVSAIVQRKYRTS
 KPEPRTRDEFQYACDITFDPDTAHRYLRLQEDNRKVTNTPWEHPYPDLPSRFLHWRQVLSQQSLYLHR
 YYFEVELSGGGTYVGLTCKGIDRKGEERNSCISGNSFSWSIHWNGKEFTAWHSDTETPLKVSPFRRLGIY
 VNFPGGILSFYGVYDAMTLIHKFDCKFSEPVYAAFWSKKENAIRIVDLGEEPEKPAGSSVEAAP

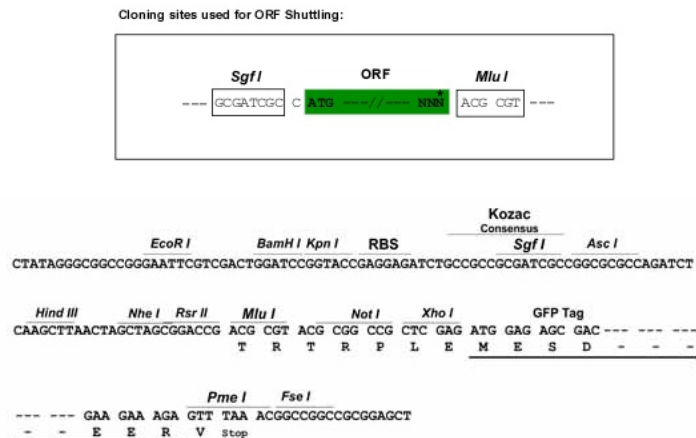
TRTRPLE - GFP Tag - V

Chromatograms:

https://cdn.origene.com/chromatograms/ja1632_b07.zip

Restriction Sites:

SgfI-MluI

Cloning Scheme:


ACCN: NM_053169

ORF Size: 1668 bp

OTI Disclaimer: The molecular sequence of this clone aligns with the gene accession number as a point of reference only. However, individual transcript sequences of the same gene can differ through naturally occurring variations (e.g. polymorphisms), each with its own valid existence. This clone is substantially in agreement with the reference, but a complete review of all prevailing variants is recommended prior to use. [More info](#)

OTI Annotation: This clone was engineered to express the complete ORF with an expression tag. Expression varies depending on the nature of the gene.

Components: The ORF clone is ion-exchange column purified and shipped in a 2D barcoded Matrix tube containing 10ug of transfection-ready, dried plasmid DNA (reconstitute with 100 ul of water).

Reconstitution Method:

1. Centrifuge at 5,000xg for 5min.
2. Carefully open the tube and add 100ul of sterile water to dissolve the DNA.
3. Close the tube and incubate for 10 minutes at room temperature.
4. Briefly vortex the tube and then do a quick spin (less than 5000xg) to concentrate the liquid at the bottom.
5. Store the suspended plasmid at -20°C. The DNA is stable for at least one year from date of shipping when stored at -20°C.

RefSeq: [NM_053169.2](#), [NP_444399.2](#)

RefSeq Size: 3896 bp

RefSeq ORF: 1671 bp

Locus ID: 94092

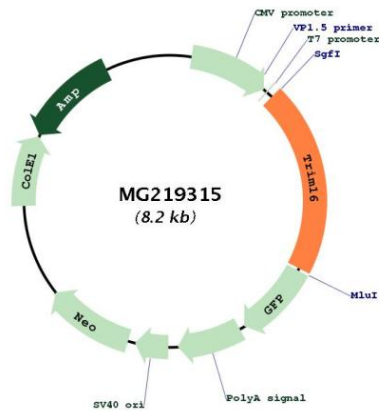
UniProt ID: [Q99PP9](#)

Cytogenetics: 11 B2

Gene Summary:

E3 ubiquitin ligase that plays an essential role in the organization of autophagic response and ubiquitination upon lysosomal and phagosomal damages. Plays a role in the stress-induced biogenesis and degradation of protein aggregates by regulating the p62-KEAP1-NRF2 signaling and particularly by modulating the ubiquitination levels and thus stability of NRF2. Acts as a scaffold protein and facilitates autophagic degradation of protein aggregates by interacting with p62/SQSTM, ATG16L1 and LC3B/MAP1LC3B. In turn, protects the cell against oxidative stress-induced cell death as a consequence of endomembrane damage. [UniProtKB/Swiss-Prot Function]

Product images:



Circular map for MG219315