

Product datasheet for **MG219312**

Has1 (NM_008215) Mouse Tagged ORF Clone

Product data:

Product Type:	Expression Plasmids
Product Name:	Has1 (NM_008215) Mouse Tagged ORF Clone
Tag:	TurboGFP
Symbol:	Has1
Synonyms:	HAS
Mammalian Cell Selection:	Neomycin
Vector:	pCMV6-AC-GFP (PS100010)
E. coli Selection:	Ampicillin (100 ug/mL)



[View online »](#)

ORF Nucleotide Sequence:

>MG219312 representing NM_008215
 Red=Cloning site Blue=ORF Green=Tags(s)

TTTTGTAATACGACTCACTATAGGGCGGCCGGAATTCGTCGACTGGATCCGGTACCGAGGAGATCTGCC
 GCC**CGGATCGCC**

ATGAGACAGGACATGCCAAAGCCCTCAGAGGCAGCGCTTGTCTGCTCTGGCCTGGCCAGGCGAGCACTCA
 CGATCATCTTTGCCCTGCTCATCTGGCCTCATGACCTGGGCCTACGCCGACGGCGTTCTCTGGCTTC
 AGATCGCTATGGACTCCTGGCCTTTGGCCTCTATGGGCAATTCCTCAGCGCACACCTAGTGGCACAGAGC
 CTCTTCGCTTACCTGGAGCACCGAAGGGTGGCAGCGGCTGCGCGGCGCTCCTTGGCGAAGGGGCCCTGG
 ATGCGGCCACTGCACGCAGCGTGGCACTCACCATCTCAGCCTACCAAGAGGATCCCGCTTACCTGCGCCA
 GTGCTTGACCTCCGCGCGCGCTTGTGTACCCGCACACGAGTTACGCGTGTCTATGGTGGTGGACGGC
 AACCGCGTGAAGATCTGTACATGGTGGACATGTTCCGAGAAGTCTTCGCCGATGAGGACCCCGCCACTT
 ATGTGTGGGATGGCAACTACCATCAGCCCTGGGAACAGCGGAGGCTACGGGCGTGTGGTGAAGTGC
 CTACCGGGAGGTGGAGGGGAGGACCCCGGGCGTTGGCGGTGGAGGCGTGGTGAACACGCAGGTGC
 GTGTGCGTGGCTCAGCGTTGGGGCGCAACGTGAGGTGATGTACACAGCTTCAAGGCCTGGGCGACT
 CCGTGGACTACGTGCAGGTCTGTGACTCAGACACAAGACTAGACCCCATGGCACTGCTGGAGCTTGTGCG
 AGTGTGGATGAAGACCCCGGGTAGGGCTGTTGGAGGGATGTGAGGATCCTTAACCCCTGGACTCC
 TGGGTCAGCTTCTTGGAGCTTTCGATACTGGGTAGCCTTCAATGTGGAACGAGCTTGTGAGAGCTACT
 TCCACTGTGTCTCCTGCATCAGTGGTCTCTGGGTCTATACAGAAACAATCTCCTGCAGCAGTCTTGGGA
 GGCCTGGTACAACAAAAGTTCCTGGGCACCCACTGCACATTTGGGGATGACAGGCACCTACCAACCGA
 ATGCTTAGCATGGGCTATGTACCAAGTATACCTCGCGCTCCAGATGCTACTCGGAGACCCCTCCTCCT
 TCCTTCGTTGGTTGAGCCAACAGACCCGCTGGTCCAAATCTTACTCCGAGAGTGGCTATAACAATGCTCT
 GTGGTGGCATCGCCACCACGCATGGATGACCTATGAAGCGGTGGTCTCGGGCCTTCCCTTTCTCGTG
 GCTGCCACGGTGTGAGGCTCTTCTATGCAGGGCGCCCGTGGGCTCTGCTCTGGGTGCTGCTCTGTGTGC
 AGGGCGTAGCACTGGCAAAGGCAGCCTTTGAGCCTGGCTGCGTGGCTGCCTGCGCATGGTGTGCTGTGC
 ACTCTATGCACCACTCTACATGTGCGGCCTCCTGCCTGCCAAATTCCTAGCATTGGTTACCATGAATCAA
 AGTGGTTGGGTACCTCGGGCCGAAGAACTGGCTGCTAACTACGTCCCGTGTGCCCCTGGCACTCT
 GGGCTCTACTGCTGCTTGGAGGCTGGCCCGCAGTGTGGCCAGGAGCCAGAGCTGACTGGAGTGGCCC
 ATCCCAGCAGCTGAAGCCTACCACCTTGTGCTGGGGCTGGTGCCTATGTGGCCTACTGGGTGGTAATG
 TTAATACTACTGGGTAGGTGTGAGGAGCTGTGCAGACGTCCGAGCGGTGGTTACCGTGTCCAAGTA

AG**CGGACCG**ACGCGTACGCGGCCGCTCGAG - GFP Tag - GTTTAA

Protein Sequence:

>MG219312 representing NM_008215
 Red=Cloning site Green=Tags(s)

MRQDMPKPSEAARCCSGLARRALTIIFALLILGLMTWAYAAGVPLASDRYGLLAFGLYGAFLSAHLVAQS
 LFAYLEHRRVAAAARRSLAKGPLDAATARSVALTISAYQEDPAYLRQCLTSARALLYPHTRLRVLMVVDG
 NRAEDLYMDFREVFADDPATYVWDGNYHQWPEAEATGAVGEGAYREVEAEDPGRlavealVRTRRC
 VCVAQRWGGKREVMYTAFAKALGDSVDYVQVCDSDTRLDPMALLELVRVLEDPVGVAVGGDVRILNPLDS
 WVSFLSSLRYWVAFNVERACQSYFHCVSCISGPLGLYRNNLLQQFLEAWYNQKFLGTHCTFGDDRHLTNR
 MLSMGYATKYTSRRCYSETPSSFLRWLSQQTRWSKSYFREWLYNALWHRHHAWMTYEAVVSGLFPFFV
 AATVLRIFYAGRWallWVLLCQGVAlAKAAFAAWLRGCLRMVLLSLYAPLYMCGLLPAKFLALVTMNQ
 SGWGTSGRKKLAANYVPVLPALWALLLLGGLARSVAQEARADWSGSPRAAEAYHLAAGAGAYVAYWVVM
 LTIYWVGVRRRCRRRSGGYRVQV

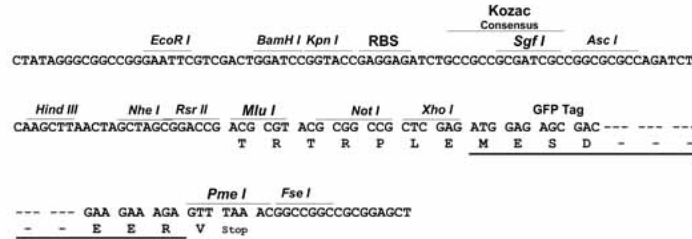
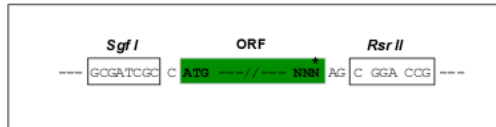
SGP**TRTRRLE** - GFP Tag - V

Restriction Sites:

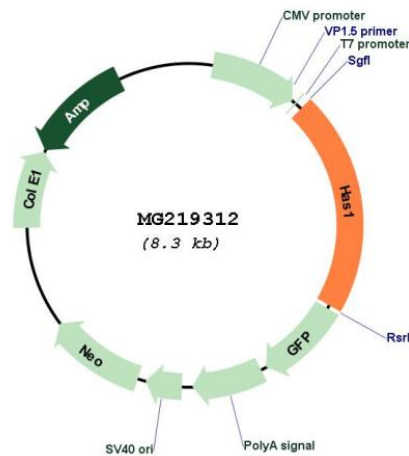
SgfI-RsrII

Cloning Scheme:

Cloning sites used for ORF Shuttling:



Plasmid Map:



ACCN: NM_008215
 ORF Size: 1749 bp

OTI Disclaimer:	The molecular sequence of this clone aligns with the gene accession number as a point of reference only. However, individual transcript sequences of the same gene can differ through naturally occurring variations (e.g. polymorphisms), each with its own valid existence. This clone is substantially in agreement with the reference, but a complete review of all prevailing variants is recommended prior to use. More info
OTI Annotation:	This clone was engineered to express the complete ORF with an expression tag. Expression varies depending on the nature of the gene.
Components:	The ORF clone is ion-exchange column purified and shipped in a 2D barcoded Matrix tube containing 10ug of transfection-ready, dried plasmid DNA (reconstitute with 100 ul of water).
Reconstitution Method:	<ol style="list-style-type: none">1. Centrifuge at 5,000xg for 5min.2. Carefully open the tube and add 100ul of sterile water to dissolve the DNA.3. Close the tube and incubate for 10 minutes at room temperature.4. Briefly vortex the tube and then do a quick spin (less than 5000xg) to concentrate the liquid at the bottom.5. Store the suspended plasmid at -20°C. The DNA is stable for at least one year from date of shipping when stored at -20°C.
RefSeq:	NM_008215.2 , NP_032241.1
RefSeq Size:	2107 bp
RefSeq ORF:	1752 bp
Locus ID:	15116
UniProt ID:	Q61647
Cytogenetics:	17 10.53 cM
Gene Summary:	Catalyzes the addition of GlcNAc or GlcUA monosaccharides to the nascent hyaluronan polymer. Therefore, it is essential to hyaluronan synthesis a major component of most extracellular matrices that has a structural role in tissues architectures and regulates cell adhesion, migration and differentiation. This is one of the isozymes catalyzing that reaction. Also able to catalyze the synthesis of chito-oligosaccharide depending on the substrate. [UniProtKB/Swiss-Prot Function]