

Product datasheet for **MG219300**

Pdp1 (NM_001033453) Mouse Tagged ORF Clone

Product data:

Product Type:	Expression Plasmids
Product Name:	Pdp1 (NM_001033453) Mouse Tagged ORF Clone
Tag:	TurboGFP
Symbol:	Pdp1
Synonyms:	Gm1024; Ppm2c
Mammalian Cell Selection:	Neomycin
Vector:	pCMV6-AC-GFP (PS100010)
E. coli Selection:	Ampicillin (100 ug/mL)



[View online »](#)

ORF Nucleotide Sequence:

>MG219300 representing NM_001033453
 Red=Cloning site Blue=ORF Green=Tags(s)

TTTTGTAATACGACTCACTATAGGGCGGCCGGGAATTCGTCGACTGGATCCGGTACCGAGGAGATCTGCC
 GCC**GCGATCGCC**

ATGCCAGCACCACCACTCAACTGTTTTCTCTCGTCCGTAACGTGAAGTGAAGCAGCAATCTATGGCACTG
 CATGTTACTGCCACCACAACATCTCTGCTGTTACCACCATACATTCCCTCAGAATCGTCTGAGGTACAC
 ACCCCATCCTGCATATGCTACCTTTTGTAGGCCACGGGAGAAGTGGTGGCAGTATACTCAAGGAAGGAGA
 TACGCTTCTACACCGCAGAAATTTACCTCACACCTCCACAAGTCAACAGCATCCTTAAAGCTAATGAAT
 ACAGCTTCAAAGTACCAGAATTTGATGGCAAAAAATGTCAGTTCATTCTTGGATTGACAGCAATCAGCT
 GCCTGCAATGCACCCATAGAGGACCGGAGAAGTGCAGCAACCTGCTGCAGACCAGAGGGATGCTCTTG
 GGGGTTTTTGTGGTATGCAGGCTGTCTTGTCCCAGGCAGTCAAGTGAAGACTCTTCTATTATATTG
 CTGTTTCCTTGTGCCCATGAGACTTTGCTAGAGATTGAAAATGCAGTGGAGAGTGGTCCGGCAGTCTGCT
 ACCTATCCTTCAGTGGCACAAGCACCCCAATGATTACTTCAGTAAGGAGCGTCCAAATTGTATTCAAC
 AGCTTGAGGACTTACTGGCAAGAACTCATAGACCTCAATACTGGAGAATCAGCTGATATTGATGTTAAGG
 AGGCTTTAATTAATGCTTCAAGAGACTCGATAATGACATTTTATTGGAGGCTCAAGTTGGTGTATCCTAA
 TTCTTTTCTAAATACCTGGTGCTTCGGGTAGCATTCTGGGGCTACTGCTTGTGTGGCCCATGTAGAT
 GGTGTTGACCTCCATGTGGCTAACACTGGTATAGTAGAGCCATGCTAGGTGTGCAAGAAGAAGTGGCT
 CTTGGTCAAGCAGTCAACTCTCTAATGACCACAATGCTCAGGATGAAAGAGAAGTGAAGCGTCTGAAACT
 GGAACACCCAAAAAATGAGGCCAAGAGCGTGGTAAAGCAGGACCGGCTGCTTGGCTTGTGATGCCCTTT
 AGGGCTTTTGGAGATGTAAGTTCAAATGGAGCATTGACCTTCAAAGAGAGTATAGAGTCTGGCCAG
 ACCAGTTGAATGACAATGAATACACCAAGTTTATCCCTCCTAACTATCATACACCTCCTTATCTTACTGC
 TGAGCCAGAGGTAACCTTATCACAGATTAAGGCCACAGGATAAAATCCTAGTGTAGCAACTGATGGGTTG
 TGGGAGACTATGCATAGACAGGATGTGGTATGATTGTGGGTGAATACTTAACTGGTATGCATCACCAAC
 AGCCAATAGCAGTTGGTGGGTACAAGGTGACTCTGGGACAGATGCATGGCCTTTTAAACAGAAAGGAGAGC
 AAAGATGTCATCAGTGTGAGGATCAGAAATGCAGCAACCCATCTCATTCCGCTGCTGTAGGCAATAAT
 GAATTTGGGGCTGTTGATCATGAACGACTCTCTAAAATGCTTAGTCTTCTGTAAGAGCTTGTCTGGATGT
 ATAGAGATGACATTACAATCATTGTAGTTCAGTTCATTTCTCATGTTGTAGGGGCATACCAAAACCAGGA
 ACAG

ACGCGTACGCGGCCGCTCGAG - GFP Tag - GTTTAA

Protein Sequence:

>MG219300 representing NM_001033453
 Red=Cloning site Green=Tags(s)

MPAPTQLFFPLVRNCELSRIYGTACYCHHKHLCCSPPIYIQNRLRYTPHPAYATFCRPRENWWQYTQGRR
 YASTPQKFYLTPPQVNSILKANEYSFKVPEFDGKNVSSILGFDSNQLPANAPIEDRRSAATCLQTRGMLL
 GVFDGHAGCACSQAVSERLFYYIAVSLLPHELTLEIENAVESGRALLPILQWHKHPNDYFSKEASKLYFN
 SLRTRYQWELIDLNTGESADIDVKEALINAFKRLDNDISLEAQVGDPNFLNYLVLRVAFSGATACVAHVD
 GVDLHVANTGDSRAMLVQEEDGWSAVTLSDNHNAQDERELERLKLHPKNEAKSVVKQDRLLGLLMPF
 RAFGDVFKWSIDLQKRVIKESGPDQLNDNEYTKFIPPNYHTPPYLTAPEVTVYHRLRPQDKFLVLTADGL
 WETMHRQDVVRIVGEYLTGMHHQQPIAVGGYKVTLGQMHGLLERRAKMSSVFEDQNAATHLIRHAVGNN
 EFGAVDHERLSKMLSLPEELARMYRDDITIIVVQFNHSHVVGAYQNQEQ

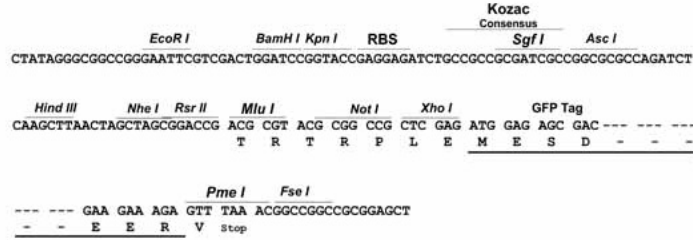
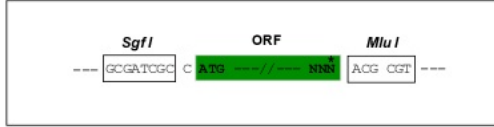
TRTRPLE - GFP Tag - V

Restriction Sites:

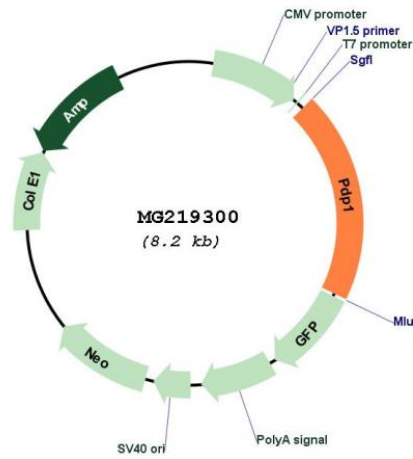
Sgfl-MluI

Cloning Scheme:

Cloning sites used for ORF Shutting:



Plasmid Map:



ACCN:	NM_001033453
ORF Size:	1614 bp
OTI Disclaimer:	The molecular sequence of this clone aligns with the gene accession number as a point of reference only. However, individual transcript sequences of the same gene can differ through naturally occurring variations (e.g. polymorphisms), each with its own valid existence. This clone is substantially in agreement with the reference, but a complete review of all prevailing variants is recommended prior to use. More info
OTI Annotation:	This clone was engineered to express the complete ORF with an expression tag. Expression varies depending on the nature of the gene.
Components:	The ORF clone is ion-exchange column purified and shipped in a 2D barcoded Matrix tube containing 10ug of transfection-ready, dried plasmid DNA (reconstitute with 100 ul of water).
Reconstitution Method:	<ol style="list-style-type: none">1. Centrifuge at 5,000xg for 5min.2. Carefully open the tube and add 100ul of sterile water to dissolve the DNA.3. Close the tube and incubate for 10 minutes at room temperature.4. Briefly vortex the tube and then do a quick spin (less than 5000xg) to concentrate the liquid at the bottom.5. Store the suspended plasmid at -20°C. The DNA is stable for at least one year from date of shipping when stored at -20°C.
RefSeq:	NM_001033453.3 , NP_001028625.1
RefSeq Size:	4198 bp
RefSeq ORF:	1617 bp
Locus ID:	381511
UniProt ID:	Q3UV70
Cytogenetics:	4 A1
Gene Summary:	Catalyzes the dephosphorylation and concomitant reactivation of the alpha subunit of the E1 component of the pyruvate dehydrogenase complex.[UniProtKB/Swiss-Prot Function]