

Product datasheet for **MG219298**

Spinkl (NM_183123) Mouse Tagged ORF Clone

Product data:

Product Type: Expression Plasmids
Product Name: Spinkl (NM_183123) Mouse Tagged ORF Clone
Tag: TurboGFP
Symbol: Spinkl
Synonyms: 9530002K18Rik
Mammalian Cell Selection: Neomycin
Vector: pCMV6-AC-GFP (PS100010)
E. coli Selection: Ampicillin (100 ug/mL)
ORF Nucleotide Sequence: >MG219298 representing NM_183123
Red=Cloning site Blue=ORF Green=Tags(s)

TTTTGTAATACGACTCACTATAGGGCGGCCGGAATTCGTCGACTGGATCCGGTACCGAGGAGATCTGCC
GCC**CGATCGCC**

ATGTCCTCAACATGGATCAAATTTCTTTTTATTCTGACTTTGGTGCTTCTTCCTTATTCTGTGTTTTTCAG
TGAATATCTTTGCAGGTCCAGAGAATGTTATTAAGAGCCAAATGCACCATGTATAAGAGTAAATCTGA
GTGCTCCAATATCGCTGAGAACCAGTTTGTGCAGATGATAGAAATACATATTACAATGAGTGTTACTTC
TGCATAGAAAAAGTAGTGAAAACTTAAATATAGGTATCATGGTATTTGTATTTATAAA

ACGCGTACGCGGCCGCTCGAG - GFP Tag - GTTTAA

Protein Sequence: >MG219298 representing NM_183123
Red=Cloning site Green=Tags(s)
MSSTWIKFLFILTLVLLPYSVFSVNIFAGPENVIKEPNCTMYKSKSECSNIAENPVCADDRNTYYNECYF
CIEKVVEKLYRYHGICIIYK

TRTRPLE - GFP Tag - V

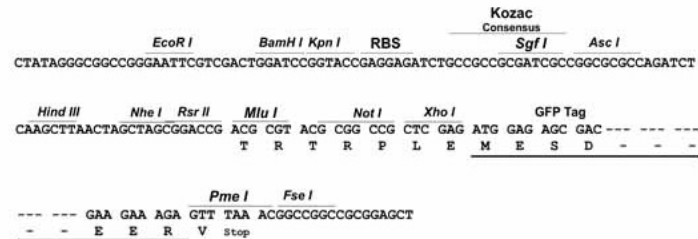
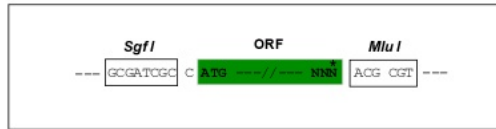
Restriction Sites: Sgfl-MluI



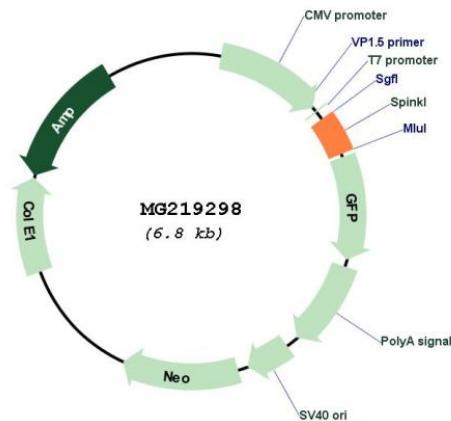
[View online »](#)

Cloning Scheme:

Cloning sites used for ORF Shutting:



Plasmid Map:



ACCN: NM_183123

ORF Size: 270 bp

OTI Disclaimer: The molecular sequence of this clone aligns with the gene accession number as a point of reference only. However, individual transcript sequences of the same gene can differ through naturally occurring variations (e.g. polymorphisms), each with its own valid existence. This clone is substantially in agreement with the reference, but a complete review of all prevailing variants is recommended prior to use. [More info](#)

OTI Annotation:	This clone was engineered to express the complete ORF with an expression tag. Expression varies depending on the nature of the gene.
Components:	The ORF clone is ion-exchange column purified and shipped in a 2D barcoded Matrix tube containing 10ug of transfection-ready, dried plasmid DNA (reconstitute with 100 ul of water).
Reconstitution Method:	<ol style="list-style-type: none">1. Centrifuge at 5,000xg for 5min.2. Carefully open the tube and add 100ul of sterile water to dissolve the DNA.3. Close the tube and incubate for 10 minutes at room temperature.4. Briefly vortex the tube and then do a quick spin (less than 5000xg) to concentrate the liquid at the bottom.5. Store the suspended plasmid at -20°C. The DNA is stable for at least one year from date of shipping when stored at -20°C.
RefSeq:	NM_183123.2 , NP_898946.1
RefSeq Size:	593 bp
RefSeq ORF:	273 bp
Locus ID:	77424
UniProt ID:	Q8CEK3
Cytogenetics:	18 B3
Gene Summary:	Does not function as an inhibitor of trypsin, chymotrypsin, subtilisin or elastase. Binds sperm and enhances sperm motility. May act as a decapacitation factor, suppresses BSA-stimulated sperm capacitation and blocks sperm-oocyte interactions in vitro.[UniProtKB/Swiss-Prot Function]