

## Product datasheet for **MG219291**

### **Mib2 (NM\_145124) Mouse Tagged ORF Clone**

#### **Product data:**

Product Type:	Expression Plasmids
Product Name:	Mib2 (NM_145124) Mouse Tagged ORF Clone
Tag:	TurboGFP
Symbol:	Mib2
Synonyms:	2210008I11Rik; skd; Zzank1
Mammalian Cell Selection:	Neomycin
Vector:	pCMV6-AC-GFP (PS100010)
E. coli Selection:	Ampicillin (100 ug/mL)



[View online »](#)

**ORF Nucleotide Sequence:**

>MG219291 representing NM\_145124  
 Red=Cloning site Blue=ORF Green=Tags(s)

TTTTGTAATACGACTCACTATAGGGCGGCCGGAATTCGTCGACTGGATCCGGTACCGAGGAGATCTGCC  
 GCC**CGCATCGCC**

ATGGACCTGGACCCCATGCAGGTGTGCAGGTGGGCATGCGTGTGGTACGCGGAATGGACTGGAATGGG  
 GCCAGCAGGATGGAGGTGAGGGCGGTGTGGGCACCGTGGTGGAGCTTGGCCGCCATGGCAGCCCCTCGAC  
 CCCCAGCCGTACAGTTGTCGTTCACTGGGACCAGGGCACACGTACCAACTATCGAGCTGGCTACCAAGGT  
 GCCCATGACCTGTTGCTCTATGACAACGCCAAATCGGTATCCGCCACCCCAATATCATCTGTGACTGCT  
 GCAAGAAACATGGGCTTCGGGGCATGCGTTGGAAGTGCCGCGTCTGCTTTGACTATGACCTCTGCACACA  
 GTGCTACATGCACAACAAGCATGACCTGACCCATGCCTTCGAGCGCTATGAGACATCTCACTCACGCCC  
 GTTACGCTGAGCCCCGACAGGGCTCCCTCGGATCCCACTGAGGGGCATCTTTCAAGGAGCTAAGGTGG  
 TACGAGGCCCTGACTGGGAATGGGGCTACAAGATGGAGGGGAAGCAAGACAGGTCGTGTGGTGGACAT  
 CCGTGGCTGGGATGTGGAGACAGGCCAAGTGTGGCCAGTGTGACGTGGGCAGATGGAACCAAGCAAGCTG  
 TACCGAGTGGGCCACAAGGGCAAGGTGGATCTCAGATGTGTTGGTGGAGCAGCTGGCGGCTTTACTACA  
 AGGAGCACCTCCCAAAGCTTGGCAAGCCAGCAGAGCTGCAGCGCAGGGTGAAGTGTGATGGCCAGCCCT  
 CCAGCGTGGGGACAAGGTCAAGTGTCTGCTGGACACAGATGTCCTAAGGGATATGCAAGAAGGCCATGGT  
 GGCTGGAACCCTAGGATGGCAGAGCACAAACAGCTTCTGGGTGGGTGATGTGGTCCGGGTCATCGGTGACC  
 TTGACACTGTGAAGCGACTTCAGGCCGGACATGGTGAATGGACCAGCAGCATGGCTCCCGCCCTGGGCCG  
 AGTGGGAAAAGTGGTGAAGGTGTTGGAGATGGAAGTTCGCTGTGGCGGTTGGCGGTGACGGTGGACC  
 TTCAGCCCCTCTGCCTAGTGGCTACCGCCCTGAGGAAGACGCCAACCTGGATGTGGCTGAGCGTGCCA  
 GAGAGAACAAGACTCACTGAGTGTGGCCCTGGACAAGCTTCGGACCCAGAAGAGTGAACCCAGAGCACCC  
 GGGGAGGCTGGTAGTAGAGGCCGCACTAGGAAATGTAGCCCGGGCTCTAGATCTTCTGCGGAGGCATCCA  
 GAGCAGGTGGACACCAAGAACCAGGGTAGAACTGCCCTGCAGGTGGCTGCTTACCTGGGCCAGGTAGAGC  
 TGGTGGGCTGCTGCTGCAGGCAAGAGCAAGTATGGACCTGCCGGATGATGAGGGCAACACTGTGCTGCA  
 CTACACAGCCATGGGGAACCCAGCCTGAGGCCACAAGGGTCTCCTGAGTGCAGGGTGTGCAGTGGATGCT  
 CGGAATGGCACACGCAGCACAGCCCTACATGTGGCTGTACAGAGGGGCTTCTAGAGGTGGTAAAGATCC  
 TGTGTGAACGTGGTTGTGATGTCAACTTGCCGGATGCGCATGCAGACACACCCCTGCATTCTGCCATCTC  
 TGCTGGTGTGGTCCAGCAGCATTGTTGAAGTCTCACCGAGGTCCTGGCATCGATGTCAGTCTGCTACC  
 AATAGCCAGGGCTTCACACTGCTACACCATGCATCCCTCAAGGGCCATGTGCTAGCAGTCAGGAAGATTC  
 TGGCAAGGGCCCCGACGCTGGTGGATGCCAAGAAGGAGGATGGCTTACCAGCATGCATCTGGCAGCCCT  
 CAACAACCACCGGAGGTGGCCAGTCCATAATCCGAGAGGGTCGCTGTGATGTGAATGTGCGGAACCGG  
 AAGCTTCACTCTCCACTTCATCTGGCTGTACAGCAGGCCACCTGGGGCTGGTACCCTGCTAGTGGACG  
 CAGGCTGCAGTGTCAACACGGAGGACGAGGAGGGTGCACGGCCCTGCATGTGGCACTACAGCGTACCA  
 GCTGTTGCCCTTGTGGCTGACAGGGCTGGGGAGACCCAGGGCCCTGCAGTGTCTCAAGGCTACAG  
 GCCTCAGGCCCTCCAGGCTGCACAGAGTTGACTGTAGGCGCTGCAGTGGCTGCTTCTGGCGTTGGAGG  
 GTGCTGATGTAGCTACGCAAACCACCGCGCCGGAGCCCACTGGACCTGGCCACAGAGGGCCGAGTGT  
 CAAGGCTTGCAGGGCTGTGCCAGCGCTTCAGGGAGCGACAGGCAGGTGGCGGTGGGGGTGTGCCCCG  
 GGCCCCGGCATGTGCTGAGTACTCCTAACACCGTGACGAACCTGCACGTGTGGCACGGCAGGGCCAG  
 AAGCTGCCGAGTGCCTGGTGTGCTCGGAGCTGGCATTGCTAATTCTGTTCTCACCGTGTACGACCCGCAC  
 AGTGTGTGAGGAGTGCCTCGAAGGATGAAGAAGTGTATCAGGTGCCAGGTGGTTCATCAGCAAGAAGCTC  
 CGCCAGACGGCTCAGAGGTGGTAAATGCCATCCAGGTGCCCGGCCCTCGGCAACTGGTGGAGGAGC  
 TACAGAGCCGCTACAGGCAGATGGAGGAGCGCATCACCTGCCCATCTGCATCGACAGCCACATCCGCT  
 GGTGTTCCAGTGCGGCATGGAGCGTGCAGCCCTGTGGCGCCGCTTAAACGCTGCCCATCTGCCG  
 CAGCCCATCCGCGACCGCATTAGATCTTCGTG

**ACGCGT**ACGCGGCCGCTCGAG - GFP Tag - GTTTAA

Protein Sequence: >MG219291 representing NM\_145124  
 Red=Cloning site Green=Tags(s)

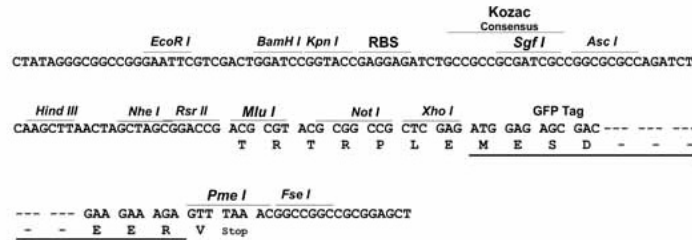
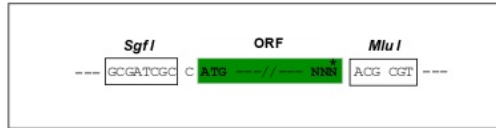
MDLDPHAGVQVGMRVVRGMDWKWGQQDGGEGGVTVELGRHGSPSTPDRTVVVQWDQGTRTNYRAGYQG  
 AHDLLL YDNAQIGIRHPNII CDCKKHLRGMRWKCRVCFDYDLCTQCYMHNKHLTHAFERYETSHSRP  
 VTLSPRQGLPRIPLRGIFQGAKVVRGPDWEWSQDGGEGKTGRVVDIRGWDVETGRSVASVTWADGTTNV  
 YRVGHKGVDLRCVGEAAGGFYYKEHLPKLGKPAELQRRVSADGQPFQRGDKVKCLLDTDVLRDMQEGHG  
 GWNPRMAEHNSFWVGDVVRVIGDLDTVKRLQAGHGEWDDMAPALGRVGVVVKVFGDGNLRVAVGGQRWT  
 FSPSCLVAYRPEEDANLVAERARENKSSLVALDKLRTQKSDPEHPGRLVVEAALGNVARALDILLRRHP  
 EQVDTKNQRTALQVAAYLQVELVRLLLQARASMDLPDDEGNTVLHYTAMGNQPEATRVLLSAGCAVDA  
 RNGTRSTALHVAVQRGFLVVKILCERGCNVLPDAHADTPLHSAISAGAGASSIVEVLTEVPGIDVTAT  
 NSQFTLLHHSALKGHVLAVRKILARARQLVDAKKEDGFTALHLAALNNHREVAQVLI REGRCDVNVRNR  
 KLQSPHLAVQQAHLGLVPLLVDAGCSVNTEDEEGDTALHVALQRHQLLPLVADRAGGDPGLQLLSRLQ  
 ASGLPGCTELTVGAACVFLAEGADVSYANHRGRSPLDLATEGRV LKALQGCAQRFRRERQAGGGGVPP  
 GPRHVLSTPNTVTNLHVS GTAGPEAAECLVCESELALLILFSPCQHRTVCEE CARRMKKCI RCQVVISKLL  
 RPDGSEVVNAIQVPPRQLVEELQSRYRQMEERITCPICIDSHIRLVFQCQGHGACAPCGAALNACPICR  
 QPIRDRIQIFV

TRTRPLE - GFP Tag - V

Restriction Sites: SgfI-MluI

Cloning Scheme:

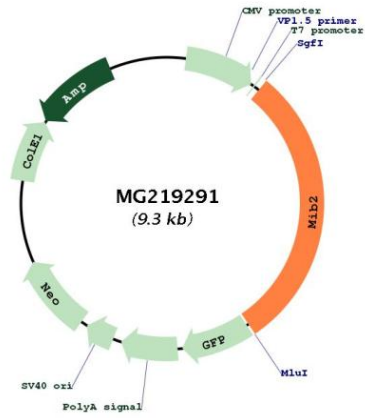
Cloning sites used for ORF Shuttling:



ACCN: NM\_145124

<b>ORF Size:</b>	2763 bp
<b>OTI Disclaimer:</b>	The molecular sequence of this clone aligns with the gene accession number as a point of reference only. However, individual transcript sequences of the same gene can differ through naturally occurring variations (e.g. polymorphisms), each with its own valid existence. This clone is substantially in agreement with the reference, but a complete review of all prevailing variants is recommended prior to use. <a href="#">More info</a>
<b>OTI Annotation:</b>	This clone was engineered to express the complete ORF with an expression tag. Expression varies depending on the nature of the gene.
<b>Components:</b>	The ORF clone is ion-exchange column purified and shipped in a 2D barcoded Matrix tube containing 10ug of transfection-ready, dried plasmid DNA (reconstitute with 100 ul of water).
<b>Reconstitution Method:</b>	<ol style="list-style-type: none"><li>1. Centrifuge at 5,000xg for 5min.</li><li>2. Carefully open the tube and add 100ul of sterile water to dissolve the DNA.</li><li>3. Close the tube and incubate for 10 minutes at room temperature.</li><li>4. Briefly vortex the tube and then do a quick spin (less than 5000xg) to concentrate the liquid at the bottom.</li><li>5. Store the suspended plasmid at -20°C. The DNA is stable for at least one year from date of shipping when stored at -20°C.</li></ol>
<b>RefSeq:</b>	<a href="#">NM_145124.3</a> , <a href="#">NP_660106.2</a>
<b>RefSeq Size:</b>	3883 bp
<b>RefSeq ORF:</b>	2766 bp
<b>Locus ID:</b>	76580
<b>UniProt ID:</b>	<a href="#">Q8R516</a>
<b>Cytogenetics:</b>	4 E2
<b>Gene Summary:</b>	E3 ubiquitin-protein ligase that mediates ubiquitination of Delta receptors, which act as ligands of Notch proteins. Positively regulates the Delta-mediated Notch signaling by ubiquitinating the intracellular domain of Delta, leading to endocytosis of Delta receptors. [UniProtKB/Swiss-Prot Function]

Product images:



Circular map for MG219291