

Product datasheet for **MG219263**

Lman1 (NM_001172062) Mouse Tagged ORF Clone

Product data:

Product Type:	Expression Plasmids
Product Name:	Lman1 (NM_001172062) Mouse Tagged ORF Clone
Tag:	TurboGFP
Symbol:	Lman1
Synonyms:	2610020P13Rik; AI326273; AU043785; C730041J05; ERGIC53; F5F8D; gp58; MCFD1; MR60; P58
Mammalian Cell Selection:	Neomycin
Vector:	pCMV6-AC-GFP (PS100010)
E. coli Selection:	Ampicillin (100 ug/mL)



[View online »](#)

ORF Nucleotide Sequence:

>MG219263 representing NM_001172062
 Red=Cloning site Blue=ORF Green=Tags(s)

TTTTGTAATACGACTCACTATAGGGCGGCCGGAATTCGTCGACTGGATCCGGTACCGAGGAGATCTGCC
 GCC**CGCATCGCC**

ATGGCGGTGTCCAGGCGGAGGGTCCCCAGGCTGGAGCGCGGTCTTCTCTGCGCCTGCTGCTGTCTT
 TCAGCCAATTCACCGGGAGCGACGGCACGGGAGCGACGCTGCGGCTCCCGGCGCCGCGGCACCCAGGC
 CGAGTTGCCACACCGCCGTTTCGAGTACAAATACAGCTTTAAGGGCCGCATCTGGTGCAGAGCGATGGG
 ACCGTGCCCTTTTGGGCCACGCGGGGAATGCTATTCCAAGTGCAGATCAGATTCGAATAGCGCCGTCAT
 TAAAAAGCCTAAGAGGTTCCGTGTGGACCAAAGCAAAGCAGCCTTCGAGAACTGGGAAGTGAAGTGAC
 ATTCGAGTGACCGGAAGAGGTCGAATTGGAGCCGATGGCTTAGCAATTTGGTATACAGAAAATCAAGGC
 TTGGACGGCCCTGTGTTGGATCAGCTGATACGTGGAATGGTGTGGAATATTTTTGATTCTTTGACA
 ATGATGAAAAGAAAATAATCCTGCTATAGTAGTTATAGGCAACAATGGACAAAATCAATTATGACCATCA
 AAATGATGGTGCCACTCAAGCTTAGCGAGTTGTCAGAGGGACTTTCGTAATAAACCTATCCTGTCCGG
 GCAAAGATTACGTATTACCAGAAGACACTGACAGTCATGATCAATAATGGCTTACACCAGATAAAAATG
 ATTATGAATTCTGTGCCAAAGTGGAAAACATGGTTATCCCCACACAAGGTCATTTGGGATATCAGCGGC
 AACAGGGGACTTGCAGATGACCACGACGTTCTTTCTTCTGACTTTCAACTGACCGAGCCTGGAAAA
 GAGCCACCTACAGCAGAAAAAGACATTTAGAAAAAGAAAAGAAAAGTATCAAGAGGAGTTTGGAGCACT
 TCCAGCAAGAATTAGACAAGAAGAAGGAGGAATCCAGAAGGGCCACCCTGACCTCCAGGGGCAGCCAGC
 GGATGACATCTTCGAGAGCATAGCGCATCGGGAGCTGAGACAGGTGTTTGAAGGACAGAATCGTATTCAT
 CTGGAGATCAAGCAGCTGAACCGGCAGCTGGATATGATTCTTGATGAACAGAGGAGGTACGTCCTGTC
 TGACAGAGGAGATCTCCAGGAGAGGAGCAGGAACCCCGGACAGCCTGGGAGGTCTCAGCAGGAACT
 GGACACCGTTGTGAAGAGCCAGCAGGAGATTCTGAGACAAGTGAATGAGGTGAAGAAGTCCATGAGTGAA
 ACTGTGCGGCTGGTGTGAGTGGCATCCAGCACCCGGGCTCAGCAGGCGTCTACGAGACAACCTCAGCACTTCA
 TGGACATCAAGGAACACCTGCACGTGGTGAAGAGAGATATCGACAGCCTCGCACAGCGCAGCATGCCATC
 TAATGAAAAACAAAATGCCAGACCTACCACCTTCCCGTCGTGTCTATCCACGATCCACTTTGTGATA
 TTTGTAGTGGTGCAGACAGTGTGTTGTTGGCTATATCATGTACAGGACTCAGCAAGAAGCAGCTGCCA
 AAAAATCTTT

ACGCGTACGCGGCCGCTCGAG – GFP Tag – GTTTAA

Protein Sequence:

>MG219263 representing NM_001172062
 Red=Cloning site Green=Tags(s)

MAVSRRRVPQAGARSFFCALLLSFSQFTGSDGTGGDAAAPGAAGTQAEIPHRRFEYKYSFKGPHLVQSDG
 TVPFWAHAGNAIPSADQIRIAPSLKSQRGSVWTKAKAAFENWEVEVTRVTVGRGRIGADGLAIWYTENQG
 LDGPVFGSADTWNGVGIFFDSFDNDGKKNPAIVVIGNNGQINYDHQNDGATQALASCQRDFRNKPYVPR
 AKITYYQKTLTVMINNGFTDPKNDYEFCAKVENMVIPTQGHFGISAATGGLADDHVDLSFLTFQLTEPGK
 EPPTAEKDISEKEKEKYQEFEHFQQELDKKKEEFQKGHPLDQGPADDIFESIGDRELQVFEQNRH
 LEIKQLNRQLDMILDEQRRYVSSLTEEISRAGTPGQPGQVSSQELDTVVKSQQEILRQVNEVKNMSME
 TVRLVSGIQHPSAGVYETTQHFMDIKEHLHVVKRDISLAQRSMPSNEKPKCPDLPPFPSCSLSTIHFVI
 FVVVQTVLFGYIMYRTQQEAAAKKF

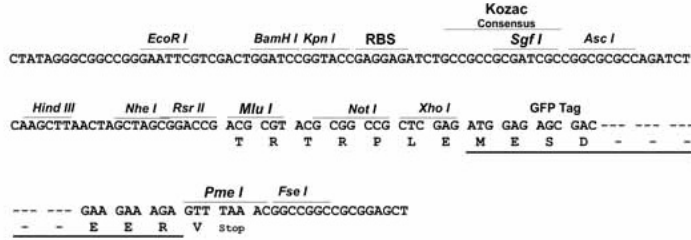
TRTRPLE – GFP Tag – V

Restriction Sites:

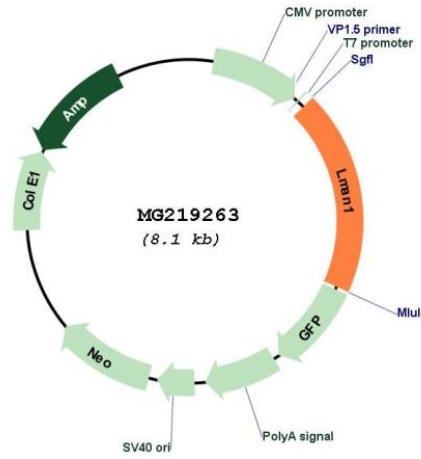
Sgfl-Mlul

Cloning Scheme:

Cloning sites used for ORF Shutting:



Plasmid Map:



ACCN:	NM_001172062
ORF Size:	1551 bp
OTI Disclaimer:	The molecular sequence of this clone aligns with the gene accession number as a point of reference only. However, individual transcript sequences of the same gene can differ through naturally occurring variations (e.g. polymorphisms), each with its own valid existence. This clone is substantially in agreement with the reference, but a complete review of all prevailing variants is recommended prior to use. More info
OTI Annotation:	This clone was engineered to express the complete ORF with an expression tag. Expression varies depending on the nature of the gene.
Components:	The ORF clone is ion-exchange column purified and shipped in a 2D barcoded Matrix tube containing 10ug of transfection-ready, dried plasmid DNA (reconstitute with 100 ul of water).
Reconstitution Method:	<ol style="list-style-type: none">1. Centrifuge at 5,000xg for 5min.2. Carefully open the tube and add 100ul of sterile water to dissolve the DNA.3. Close the tube and incubate for 10 minutes at room temperature.4. Briefly vortex the tube and then do a quick spin (less than 5000xg) to concentrate the liquid at the bottom.5. Store the suspended plasmid at -20°C. The DNA is stable for at least one year from date of shipping when stored at -20°C.
RefSeq:	NM_001172062.1 , NP_001165533.1
RefSeq Size:	1742 bp
RefSeq ORF:	1554 bp
Locus ID:	70361
UniProt ID:	Q9D0F3
Cytogenetics:	18 E1
Gene Summary:	Mannose-specific lectin. May recognize sugar residues of glycoproteins, glycolipids, or glycosylphosphatidyl inositol anchors and may be involved in the sorting or recycling of proteins, lipids, or both. The LMAN1-MCFD2 complex forms a specific cargo receptor for the ER-to-Golgi transport of selected proteins (By similarity).[UniProtKB/Swiss-Prot Function]