

Product datasheet for **MG219238**

Acsl6 (NM_144823) Mouse Tagged ORF Clone

Product data:

Product Type:	Expression Plasmids
Product Name:	Acsl6 (NM_144823) Mouse Tagged ORF Clone
Tag:	TurboGFP
Symbol:	Acsl6
Synonyms:	A330035H04Rik; AW050338; FacI6; LACS; Lacsl; mKIAA0837
Mammalian Cell Selection:	Neomycin
Vector:	pCMV6-AC-GFP (PS100010)
E. coli Selection:	Ampicillin (100 ug/mL)



[View online »](#)

**ORF Nucleotide
Sequence:**

>MG219238 representing NM_144823
 Red=Cloning site Blue=ORF Green=Tags(s)

TTTTGTAATACGACTCACTATAGGGCGGCCGGGAATTCGTCGACTGGATCCGGTACCGAGGAGATCTGCC
 GCC**GCGATCGCC**

ATGCTGACCTTCTTCTTGGTGTGCGGGGTTCTCTCTGGCTGTTTCCGAGATTGCTCTCACTTCTGG
 AGAAGATGCAGACCCAGGAGATCCTGAGGATCCTGCGGCTGCCGAGCTATCGGACTTGGCCAGTTTTT
 CCGCAGCCTCTCAGCTACCACCCTCGTGAGTGTGGGTGCACTGGCTGCCGTCCTTGCCTACTGGCTCACT
 CACCGGCCAAAGGCCTTGAACACCATGCAACCTCCTGAAGCAGTCGGAAGAAGTGAGGACGGTGGT
 GAGCCCGCGATCTGTGATTGGGGTTGCACTCAATTGCTTACCCATTACTATGACGATGCCCGACCAT
 GTACCAGGTGTTCCGCCGTGGGCTTAGCATCTCAGGGAATGGACCCTGTCTTGGCTTCCGGAAGCCAGAG
 CAACCTTACCAGTGGCTGTCTACCAAGAGGTGGCCAAAAGGGCTGAATTTCTGGGGTGGGGCTTCTCC
 AGCAGACTGTAAAGTGGGCACAGAGCAGTTTCGTTGGTGTTCACAAAATCGGCCGGAGTGGATCAT
 TGCCGAGCTGGCCTGCTACACGTATTCCATGGTGGTGGTACCGCTCTACGACACCCTGGGCCAGGGTCT
 ATCAGCTACATCAATACTGCGGACATTTGCACGGTAATCGTCGATAAACCCACAAGGCAACACTTC
 TGCTGGAACACGTGGAGAGGAAGGAGACTCCGGGCCTCAAGCTGGTCATCCTCATGGAGCCGTTTGGGA
 CGCCCTGAGAGAGAGAGAAAGAAGTGCGGGTGGACATCAAGTCCATGCAGGCTATAGAGGACTGTGGC
 CGAGAGAATCATCATGCCCCGTGCCCCACGGCTGATGACCTCTCCATCGTGTGTTTCAAAAGTGGTA
 CAACAGGGAACCCAAAGGTGCAATGCTCACCCACGGGAACGTGGTGGCCGATTTCTCGGGCTTTCTGAA
 AGTGACAGAGAAAGTGATCTTCCGAGACAGGACGATGTGCTCATCTCCTTCTGCTCTGGCTCACATG
 TTTGAGAGAGTGATCCAGTCTGTGTCTACTGCCACGGAGGCGCGTGGGCTTCTCCAGGGAGACATCC
 GCCTCCTCTCAGATGACATGAAGGCTCTCCGCCCTACCATCTTCCCTGTGGTCCCACGGCTGTAATCG
 GATGTATGACAAGATCTTCCACCAGGCAGACACCTCACTAAAGCGCTGGCTCCTGGAGTTTGCAGCAAAG
 CGCAAGCAGGCAGAGGTCCGGAGCGGAATCATCAGAAACAATAGTATCTGGGATGAACTCTTCTTTAATA
 AGATTCAGGCCAGTCTTGGTGGGCATGTGAGGATGATTGTCACTGGAGCAGCCCCGCGTCACCAACGGT
 TCTGGGATTCCTACGAGCAGCTCTGGGGTCCAGGTCTATGAAGGTTATGGGCAAAGTGAATGCACAGCT
 GGGTGTACCTTACAACGCCAGGGGACTGGACATCAGGGCATGTAGGGCACCTTGCCTGCAACCACA
 TCAAGCTGGTCGATGCAGAGGAAGTCACTACTGGACCTGCAAAGGAGAAGGAGAGATATGTGTGAAAGG
 ACCAAATGTGTTCAAAGGCTACTTAAAAGACGAGGACAGGACAAAGGAGGCCCTGGACAGCGACGGCTGG
 CTTCACTGGAGACATTGGGAAATGGCTGCCGGAGGGAACACTCAAATCATTGATCGAAAAAGCACA
 TATTTAAACTTGCTCAGGGGGAATATGTTGCGCCAGAGAAGATCGAGAACATCTACATCCGGAGTGAGCC
 TGTGGCACAATCTACGTCCACGGGACAGCTTAAAGGCCTTTTTGGTTGGCATTGTCTGCTGACCCCT
 GAAGTCATGCCTTCTGGGCTCAGAAGAAAGGAATCGAAGGGACCTATCAGGAACTCTGCATGAAAAAGG
 AATTGAAGAAAGCCATTCTGGATGACATGGTGTGCTGGGGAAAGAAAGCGGACTGCATTCTTTGAAACA
 GGTTAAAGCCATTTACATCCATTGTGACATGTTCTCTGTTCAAAATGGTCTGCTGACACCAACACTAAAG
 GCTAAGAGACCGGAGCTGAGAGAGTACTTCAAAAAGCAAATAGAAGAGCTTTACTTAGTCTCCGTG

ACGCGTACGCGGCCGCTCGAG – GFP Tag – GTTTAA

Protein Sequence: >MG219238 representing NM_144823
 Red=Cloning site Green=Tags(s)

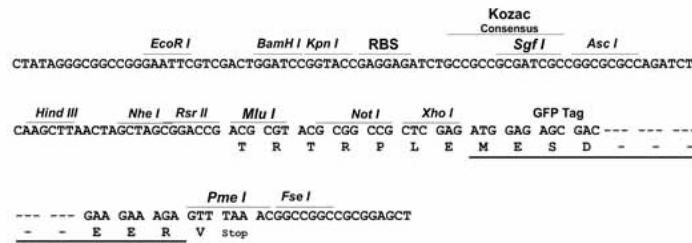
MLTFFLVSGGSLWFLAEIALSLLEKMQTQEILRILRLPELSDLGQFFRSLSATTLVSVGALAAVLAYWLT
 HRPKALQPPCNLLKQSEEVEDGGGARRSVIGGCTQLLTHYYDDARTMYQVFRRLSISGNGPCLGFRKPE
 QPYQWLSYQEVAKRAEFLGSGLLQHDCKVGTEQFVGVFQAQNRPEWIIAELACYTYSMVVPLYDTLGPGS
 ISYIINTADICTVIVDKPHKATLLEHVERKETPGLKLILMEPFEDALRERGGKCGVDIKSMQAIEDCG
 RENHHAPVPPRPDDLIVCFSTGTTGNPKGAMLTGHNVVADFSGFLKVTEKVIFFPRQDDVLI SFLPLAHM
 FERVIQSVVYCHGGRVGFQGDIRLLSDDMKALRPTIFPVVPRLLNRMVDKIFHQADTSLKRWLLEFAAK
 RKQAEVRSIGIIRNNSIWDELFFNKIQASLGGHVRMIVTGAAPASPTVLGFLRAALGCQVYEGYGQTECTA
 GCTFTTPGDWTSGHVGAPLPCNHIKLVDAEELNYWTKGEGEICVKGNVFKGYLKDEDRTKEALDSDGW
 LHTGDIGKWLPEGTLKIIDRKKHIFKLAQGEYVAPEKIENIYIRSEPVAQIYVHGDLSKAFLVGIVVDPDP
 EVMPSWAQKKGIEGTQYELCMKKELKKAILEDMMVMLGKESGLHSFEQVKAIYIHCDMFSVQNGLLTPTLK
 AKRPELREYFKQIEELYLVSV

TRTRPLE - GFP Tag - V

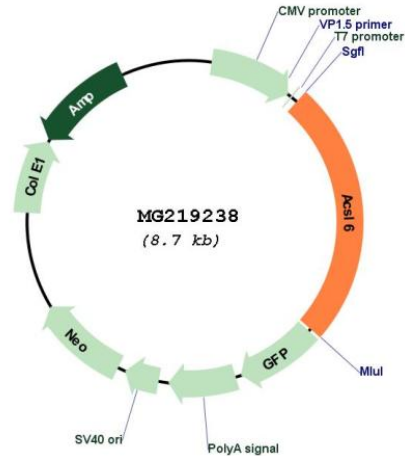
Restriction Sites: SgfI-MluI

Cloning Scheme:

Cloning sites used for ORF Shutting:



Plasmid Map:



ACCN: NM_144823

ORF Size: 2166 bp

OTI Disclaimer: Due to the inherent nature of this plasmid, standard methods to replicate additional amounts of DNA in E. coli are highly likely to result in mutations and/or rearrangements. Therefore, OriGene does not guarantee the capability to replicate this plasmid DNA. Additional amounts of DNA can be purchased from OriGene with batch-specific, full-sequence verification at a reduced cost. Please contact our customer care team at custsupport@origene.com or by calling 301.340.3188 option 3 for pricing and delivery.

The molecular sequence of this clone aligns with the gene accession number as a point of reference only. However, individual transcript sequences of the same gene can differ through naturally occurring variations (e.g. polymorphisms), each with its own valid existence. This clone is substantially in agreement with the reference, but a complete review of all prevailing variants is recommended prior to use. [More info](#)

OTI Annotation: This clone was engineered to express the complete ORF with an expression tag. Expression varies depending on the nature of the gene.

Components: The ORF clone is ion-exchange column purified and shipped in a 2D barcoded Matrix tube containing 10ug of transfection-ready, dried plasmid DNA (reconstitute with 100 ul of water).

Reconstitution Method:

1. Centrifuge at 5,000xg for 5min.
2. Carefully open the tube and add 100ul of sterile water to dissolve the DNA.
3. Close the tube and incubate for 10 minutes at room temperature.
4. Briefly vortex the tube and then do a quick spin (less than 5000xg) to concentrate the liquid at the bottom.
5. Store the suspended plasmid at -20°C. The DNA is stable for at least one year from date of shipping when stored at -20°C.

RefSeq: [NM_144823.4](#), [NP_659072.3](#)

RefSeq Size: 2592 bp

RefSeq ORF: 2169 bp

Locus ID: 216739

Cytogenetics: 11 32.13 cM

Gene Summary: Activation of long-chain fatty acids for both synthesis of cellular lipids, and degradation via beta-oxidation. Plays an important role in fatty acid metabolism in brain and the acyl-CoAs produced may be utilized exclusively for the synthesis of the brain lipid (By similarity).
[UniProtKB/Swiss-Prot Function]