

## Product datasheet for **MG219226**

### Abcb7 (NM\_009592) Mouse Tagged ORF Clone

#### Product data:

Product Type:	Expression Plasmids
Product Name:	Abcb7 (NM_009592) Mouse Tagged ORF Clone
Tag:	TurboGFP
Symbol:	Abcb7
Synonyms:	AA517758; Abc7; AU019072
Mammalian Cell Selection:	Neomycin
Vector:	pCMV6-AC-GFP (PS100010)
E. coli Selection:	Ampicillin (100 ug/mL)



[View online »](#)

**ORF Nucleotide Sequence:**

>MG219226 representing NM\_009592  
 Red=Cloning site Blue=ORF Green=Tags(s)

TTTTGTAATACGACTCACTATAGGGCGGCCGGGAATTCGTCGACTGGATCCGGTACCGAGGAGATCTGCC  
 GCC**CGATCGCC**

ATGGCGCTGCTCGGATACATTCCTGGCGCTGGGCAGCCGCGCGGTTCGTTTCGAAAAGCACAAAGCATT  
 CGGCAGTCTGACCCGGCTCTAGTCTCCATGTGCGGCTCAGGCCCGCATGGAGTTCGCCAGCGCGG  
 CGCGTCAGGAAGCGCTCGGCTGTCCAGACTACAGAATCATTAAAGAAATACTACACAGCAGAGATGGGA  
 AAAGACAACCTCCAGACAGTTACTAGATGCTACAAAGGCTCTCCAGACATGGCCATTGATAGAAAAGAGAA  
 CATGTTGGCATGGGCACGCAGGAGGAGGACTCCACACAGACCCAAAAGAAGGGTTAAAGGATGTTGATAC  
 TAGAAAAATCATCAAAGCCATGCTTTCTATGTGTGGCTGAAGATAGGCCAGATCTACGAGCCAGAGTT  
 GCCATCTCCCTGGGATTTTTGGGTGGTCAAAGGCCATGAATATTGTGGTTCCTTTCATGTTAAATATG  
 CTGTAGACAGCCTCAACCAGATGTGGGAAACATGCTGAACCTGAGTGATGCACCAAATACAGTTGCAAC  
 CATGGCAACAGCAGTTCTGATTGGCTATGGTGTATCAAGAGCCGGAGCTGCCTTTTTCAATGAAGTTCGA  
 AATGCAGTATTTGGCAAAGTAGCACAAAATTCATACGAAGAATAGCCAAAATGTATTTCTCCATCTCC  
 ACAACTTGGATCTGGGTTTCCATCTGAGCAGACAGACAGGAGCTTTATCTAAGGCTATTGACAGAGGAAC  
 AAGGGCATTAGTTTTGTCTCAGTGCCTTAGTATTTAATCTTCTCCCTATTGTGTTTGAGATGATGCTT  
 GTCAGTAGTGTGTTGATTACAAATGTGGTGCCAGTTTGCAATTGGTAACCCTAGGAACACTTGGTGCAT  
 ATACAGCATTACAGTTGCAGTTACACGGTGGAGAAGTATGAAATAGAAAATGAACAAAAGCAGATAA  
 CGATGCAGGTAATGCTGCTATCGACTCACTGCTGAATTATGAACTGTGAAGTATTTAATAATGAAAAA  
 TATGAAGCACAAAGATATGATGGATTCTGAAGACATAGAGACTGCTTCATTGAAAAGTACCTCTACTC  
 TGGCAATGCTGAATTTTGGCCAAAATGCTATTTTCAGTGTGGATTAACAGCTATAATGGTCTTGCCAG  
 TCAGGGAATTGTGGCAGGTGCCCTTACTGTTGGAGATCTAGTGATGGTGAATGGACTGCTTTTTCAACTG  
 TCATTACCCCTTAACTTCTGGGAACTGTATATAGAGAGACAAGACAAGCACTCATAGATATGAACACCT  
 TGTTTACTCTGCTCAAGGTAGACACACGGATTAAGACAAAAGTATGGCACCTCCCTTCAAATAACACC  
 ACAGACAGCCACGGTGGCCTTTGATAATGTGCATTTTGAATACATCGAAGGACAGAAAGTCTTAATGGA  
 GTATCTTTTGAAGTCCCTGCAGGAAAGAAAGTGGCCATTGTAGGAGGTAGTGGGTCAGGAAAAAGCACGA  
 TAGTGAGGCTGCTGTTTCGCTTCTATGAGCCTCAAAGGGTAGCATTTACCTTGTGGTCAAATTTACA  
 AGATGTGAGCCTGAAAAGTCTTCGGCGGCAGTGGGAGTAGTACCTCAGGATGCTGCTCTTCCATAAT  
 ACCATCTACTACAACCTTTATATGGAACATCAATGCTTACCTGAGGAAGTATATGCAGTCGCAAAAT  
 TAGCTGGTCTTCATGATGCAATTCCTCGAATGCCACATGGATATGACACACAAGTAGGAGAACGAGGACT  
 CAAGCTATCAGGCGGAGAAAAGCAGAGGGTAGCAATTGCAAGAGCCATTTTGAAGATCCCCAGTTATT  
 CTCTATGATGAAGCTACTTCATCATTAGATTCAATTACTGAAGAGACTATTCTTGGTGCCATGAGAGATG  
 TGGTCAAGCACAGAACTTCTATTTTCATTGCACATAGATTGTCAACAGTGGTTGATGCAGATGAAATCAT  
 TGTCTGAGCCAGGGGAAGGTAGCTGAACGTGGTACCCACTATGGTCTGCTTGTAACTCTAGCAGTATC  
 TATTCAGAGATGTGGCATACACAGAGCAACCGTGTACAGAACCAGGATAGCCTCGGATGGGATGCAAGA  
 AAGAGAGTCTCTCAAAGAGGAGGAAAGAAAGAAGCTCCAAGAAGAAATTGTCAACAGTGTGAAAGGCTG  
 TGGAAATTGTTCTCTGC

**ACGCGT**ACGCGGCCGCTCGAG - GFP Tag - GTTTAA

Protein Sequence: >MG219226 representing NM\_009592  
 Red=Cloning site Green=Tags(s)

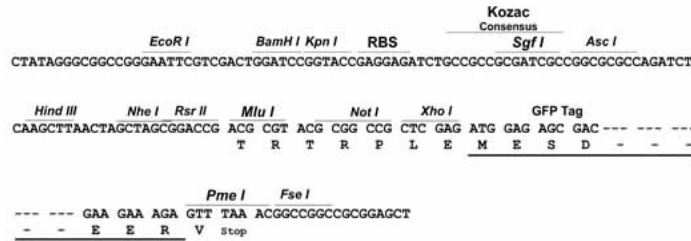
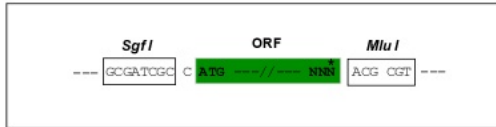
MALLAIHSWRWAAAAVAFEKHKHS AVL TRALVSMCGSPRWSSSQRGASGSARLSQTTESLRNTTQQRWG  
 KDNSRQLLDATKALQTWPLIEKRTCWHGHAGGGLHTDPKEGLKDVDTRKIIKAMLSYVWPEDRPDLRARV  
 AISLGFLGGAKAMNIVPFMFKYAVDSL NQMSGNMLNLSDAPNTVATMATAVLIGYGVSRAGAAFFNEVR  
 NAVFGKVAQNSIRRIAKNVFLHLHNLDLGFHL SRQTGALSKAIDRGTGTSFVLSALVFNLLPIVFEMML  
 VSSVLYYKCGAQFALVTLGLGAYTAFTVAVTRWRTRFR IEMNKADNDAGNAAIDSLLNYETVKYFNNEK  
 YEAQRYDGF LKTYETASLKSTSTLAMLNFGQNAIFSVGLTAIMVLASQGI VAGALTVGDLMVNGLLFQL  
 SLPLNFLGTVYRETRQALIDMNTLFTLLKVDTRIKDKVMAPPLQITPQTATVAFDNVHFYEIEGQKVLNG  
 VSFEVPAGKKVAIVGGSGSGKSTIVRLLFRFYEPQKGS IYLAGQNLQDVSLESLRRAVGVVPQDAVL FHN  
 TIYYNLLYGNINASPEEVYAVAKLAGLHDAILRMPHG YDTQVGERGLKLSGGEKQRVAIARAILKNPPVI  
 LYDEATSSLD S I TEETILGAMRDVVKHRTSIFIAHRLSTVVD ADEIIVLSQ GKVAERGTHYGLLANSSSI  
 YSEMWHTQSNRVQNQDSLGDWAKKESLSKEEERKKLQEEIVNSVKGCGNCSC

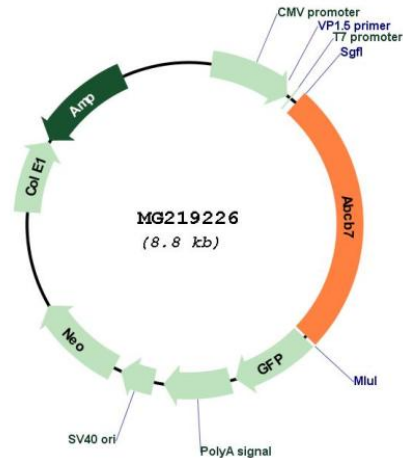
TRTRPLE - GFP Tag - V

Restriction Sites: SgfI-MluI

Cloning Scheme:

Cloning sites used for ORF Shutting:



**Plasmid Map:**


**ACCN:** NM\_009592

**ORF Size:** 2256 bp

**OTI Disclaimer:** The molecular sequence of this clone aligns with the gene accession number as a point of reference only. However, individual transcript sequences of the same gene can differ through naturally occurring variations (e.g. polymorphisms), each with its own valid existence. This clone is substantially in agreement with the reference, but a complete review of all prevailing variants is recommended prior to use. [More info](#)

**OTI Annotation:** This clone was engineered to express the complete ORF with an expression tag. Expression varies depending on the nature of the gene.

**Components:** The ORF clone is ion-exchange column purified and shipped in a 2D barcoded Matrix tube containing 10ug of transfection-ready, dried plasmid DNA (reconstitute with 100 ul of water).

**Reconstitution Method:**

1. Centrifuge at 5,000xg for 5min.
2. Carefully open the tube and add 100ul of sterile water to dissolve the DNA.
3. Close the tube and incubate for 10 minutes at room temperature.
4. Briefly vortex the tube and then do a quick spin (less than 5000xg) to concentrate the liquid at the bottom.
5. Store the suspended plasmid at -20°C. The DNA is stable for at least one year from date of shipping when stored at -20°C.

**RefSeq:** [NM\\_009592.1](#), [NP\\_033722.1](#)

**RefSeq Size:** 5759 bp

**RefSeq ORF:** 2259 bp

**Locus ID:** 11306

UniProt ID: [Q61102](#)

Cytogenetics: X 46.58 cM

Gene Summary: Could be involved in the transport of heme from the mitochondria to the cytosol. Plays a central role in the maturation of cytosolic iron-sulfur (Fe/S) cluster-containing proteins (By similarity).[UniProtKB/Swiss-Prot Function]