

Product datasheet for **MG219220**

Clmn (NM_053155) Mouse Tagged ORF Clone

Product data:

Product Type:	Expression Plasmids
Product Name:	Clmn (NM_053155) Mouse Tagged ORF Clone
Tag:	TurboGFP
Symbol:	Clmn
Synonyms:	9330188N17Rik; AI428889; AI788815; mKIAA1188
Mammalian Cell Selection:	Neomycin
Vector:	pCMV6-AC-GFP (PS100010)
E. coli Selection:	Ampicillin (100 ug/mL)
ORF Nucleotide Sequence:	>MG219220 representing NM_053155 Red=Cloning site Blue=ORF Green=Tags(s)

TTTTGTAATACGACTCACTATAGGGCGGCCGGAATTCGTCGACTGGATCCGGTACCGAGGAGATCTGCC
GCC**CGATCGCC**

ATGGCTGCTCAGGAGTGGGACTGGTTCCAGCGCGAGGAGCTCATCGGGCAGATCAGCGACATCCGTGTGC
AAAACCTGCAAGTGGAGAGGGAAAACGTGCAGAAGAGGACTTTCACACGATGGATAAACCTACACCTCGA
AAAGTGTGACCCACCTCTAGAAGTTACGGACCTGTTTGTGATATCAAGATGGCAAATCCTAATGGCT
CTGTTAGAAGTCCTCTGGGCGAAATCTGCTGCATGAATACAAATCCTCATCACATCGTATTTTTCGGT
TGAACAACATAGCGAAAGCACTCAAGTTCTGGAAGATAGCAATGTCAAGCTGGTTAGCATCGATGCAGC
GGAATAGCGGACGGCAACCCCTCGCTGGTTCTCGGGCTGATATGGAACATCATTCTCTTCCAGATA
AAGGAGCTCACGGCAACCTCAGCAGGAGTTCTCCATCTTCCAGCTTGTCAACCGGCTCTGGGGCACCG
ACTCCGACTCTTCTACCCACCCACCCACCAGAGAGGAGTGTGGCAGTGGCAGTGAAAGACCAGAG
GAAGGCCATCAAGACCCTGCTGTGATGGGTGCAGAGGAAAACCAGGAAGTATGGTGTGGCAGTCCAAGAC
TTTGCGGGCAGCTGGAGGAGTGGCTGGCTTCTGGCTGTGATCAAAGCTATTGACCCAGCCTCGTAG
ACATGAAGCAGGCTCTGGAAGATTCCACCCGGGACAATCTGAAAAGGCCTTCAGATTGCCATGATTC
CCTGCATATCCCAGGCTCCTGGAGCCGGAAGACATCATGGTTGACATGCCAGATGAGCAGTCCATTGTG
ACATACGTGGCCAGTTTCTAGAGCGCTTCCAGAGTTGGACCTGAAGATTTTGTGAATCCGGACAAAG
AAGCCCCATCGAGTCCACCTTGTCCGATCAAAGAAAGCCCTCTGAGCAGGGGAGCAGAGTCCCTCCT
CCTCAGCGAGAACGGAGAGCGGGCTACTGTCAACCAGGAAAACAGCTACCCGCCCTGACAAGGTC
TTCGTCTGTGACCAGCTTGTGAGAGTCCGACTGGCTTCTGTCTGGATAGTGCTCCAGCCACAACTGTGAG
ACAGCTCCACAGAGTTTATGCATGAGATTATTGACCAAGTCTCCAGGGGAGCACGGGGAAGACTGGATC
CATCGCAGAGCCAACTCCAGAGTCGTCATTTTATCAACCAGAAAGGATGGCAGGAGTCCAACCTTTG
CCTGTCAAGAAAACCGTCCACTTCGAGGCAGACTTGCACAAGGATGCCTCGTGTAGTAAGGACCTTTCT
ATAGCTGACTTCCGCTTCGAGGGGAGCCCCAAGGCAACCAAGGAGCTGTCAAAGCAGGACGGCCATGT
CTCACTGGCTGAGGTGTCCAAGGAAAAGAAGTCAAGAACAGGAAGCCAGGCTAGTGTGGAAGCTGCC



[View online >](#)

TCAGACAAGGTCCTCCGAAAGCACGGTCGATGGTCTGGATGCTGTGCCCAAGATGCTCAGCCTTCCCAGG
 ACTCCTCCTTCTGTAACGGCACTGTAGAGAGCCCATCCAGCCAAGGTGAGAAAGGCCCTCCTCCATCATC
 CCCTGGAGATCATACTCTCTGGCAACTCCACTGAGCTCAAGGTTACAGTTGCTGACCGTTGAGCCTATG
 GACAAGGAAGACTACTTTGAATGCATCCCACTAAAAGCTTCAAAGTTAACAGGGACCTAGTGGATTTCCG
 CCTCCACCAGCCAGGCTTTTGGTGGAGTCTTCGTCCCACGAGAAGACCCGTGGGGAGGAAGAGGGTTC
 TGAAATCACGCTGAGAAACCAGGAAAAGGAAATCAAAGTCTCCCGTCGAGAAAACAGAGGCCCGCGAG
 TCCAGATTGGAGCCCAAGAAGCTTGGCCCTCTCCCAAAGATCCCGAACAAGAAGCAAGGCCACGCTT
 TGCCCCCGGAAACCCCTGCAGACAAAAAGCCGAAGTGTATGAAAAGGCCAAGAGAAAGTCCACTCGTCA
 TCACAGCGAGGAAGAAGGAGAAGCAGAAAAGTGGCCTCTCTGCAGTCTGTGAAGAAGAAATACCATCCGCC
 CCTCCCAGCACCAGCGTCAGCCTGGAAACCCTCAGGAGTCACAGCGAAGAAGGTTTGGATTTCAAACCTT
 CGCCGCCGCTCTCGAAGATCTCTGTCTATCCCCACGACCTGTTCTACTACCCTCACTACGAAGTGCCCTT
 GGCCGCTGTGCTGGAGGCTTACGCGGAAGGCGGGGAGGATTTGAAAAGTGAAGACACAGACCTAGAGCAT
 CCAGAGGACAGCTATCTGCAGGACTCCAGGGAGGAGGAGCCGACGAGGACGAGGAGGAGGCCAGAGCT
 CTCAAAGCAGCTGCAGTTTCTCCTTGCCTGTTGACAACAGCTACCCAGCGTCAGTGAGCATGTGTCCCA
 TGTCGATGGGAGTCTGAGGGACCCACGTCAGCCTTGGGACCTGGCTCTCCACCCTCTCATGAGGACCAC
 CAGCCAAAGGAAACCAAGAGAAATGGCCCTGTGGAAGGCCAGCAGTCCCAAGAACCCCAAAACCCGGAAC
 TGCCACAAAAGCCATTAGAAGAAAAGTTAACGGAAGCCTCAACTAGCAGTAAAAAGAAAGGAAAAACGGAA
 ACACATGGACCACGTAGAAAAGCTCATTATTTATAGCCCTGGGACGGTCCGCTCCTCAGACGACCTTGA
 GAAAATCCAGCGAACACAAGGTCCTTCCAGGAATAGTCACAGTGACTCCAGCATTTACATTGGCGAC
 ACATAATAGGTCTTTGGAATTGGACATTTTAGCTATGTTCAATTGAGGAACGCAGCTGATCTGGATGA
 CAGGAGAAACAGAGTGTTAAACAGGTACAATTCTCAGAAGCTCACTGAGCTGATTTTACAGTTCTACGGC
 ATCAGAGCAGACATGAAGCGCGAGTACAACATGCCAGGCTGTCTATGACTGGCACCAACTCCTCTGGAG
 AAGCTGTGCCCTGGGGAACAGAGCCCGCCCAACGACTCTCTGACGCAGTTTGTACAGCAGCCCGACGT
 GATATATTTTCTCTCTCTCTGGCTCCTCGTTACTGCTTACTGCTCTTCCCACAGCTTGATGTCAGC
 CGGCTC

ACGCGTACGCGGCCGCTCGAG – GFP Tag – GTTTAA

Protein Sequence:

>MG219220 representing NM_053155

Red=Cloning site Green=Tags(s)

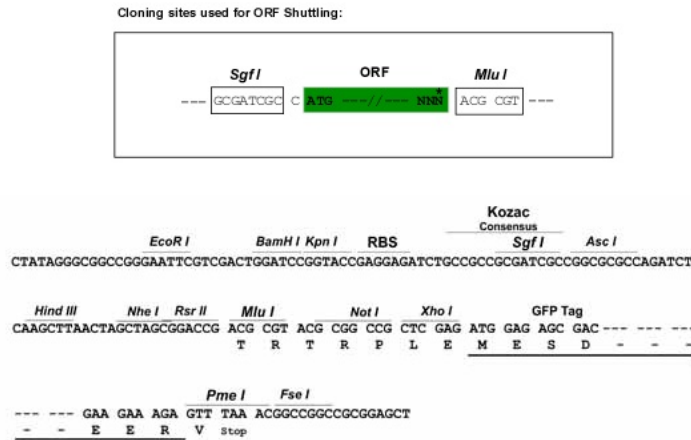
MAAQEWDWFQREELIGQISDIRVQNLQVERENVQKRTFTRWINLHLEKCDPPELVDFVDIQDGKILMA
 LLEVLSGRNLHEYKSSSHRIFRLNNIKALKFLEDSNVKLVSIDAAEIADGNPSLVLGLIWNIIILFFQI
 KELTGNLRSRSPSSSLSPGSGGTDSDSSYPPTPTTTERSVAVAVKQQRKAIKTLLSWVQRKTRKYGVAVQD
 FAGSWRSLAFLAVIKAIDPSLVDMKQALESTRDNLEKAFSIAHDSLHPRLLPEPIMVDMPPDEQSIV
 TYVAQFLERFPELEPEDFVNPDKAPIESTFVRIKESPSEQSRVLLLSSENGERAYTVNQETSYPDPKV
 FVCDQLESPTGFCLDSAPSHKLSDSSTEFMHEIIDQVLQGSTGKTGSIAEPTPESSILSTRKDGRRNSL
 PVKKTVHFADLHKDASCSDPFYSSDFRFEKSPKATKELSKQDGHVSLAEVSKEKKKSEQEARLVLEAA
 SDKVPESTVDGLDAVPQDAQPSQDSSFCNGTVESSSQGEKPPPSSPGDHTLLANSTELKVQLLTVPEM
 DKEDYFECIPLKASKFNRLVDFASTSQAFGEDPSSHEKTRGEEEGSENHAEKPGKRKSKSPRAETEAEE
 SRLEPKKLEPPPDPEDQEDQGHALPPETPADKKPEVYKAKRKRSTRHHSEEEGEAESGLSAVCEEEIPSA
 PPSTSVSLETLRSHSEGLDFKPSPLSKISVIPHDLFYYPHYEVPLAAVLEAYAEGGEDLKSSEDLDLH
 PEDSYLQDSREEEADEDEEEAQSQSSCSFSLPVDNSYPSVSEHVSHVDSSEGPTALGPGSPSHEDH
 QPKETKENGVPVESQSQEPPNPELPTKPLEEKLTEASTSSKKKEKRKMDHVESLFIAPGTVRSDDL
 ENSSEHKVPSRNSHSDSSIIYIRRHNTNRSLELDHFSYVQLRNAADLDRRNRVLRNYSQKLTTELILQFYG
 IRADMKREYKHARLSMTGTNSSGEAVPLGNQSPPNDSL TQFVQQPDVIYIFILFLWLLVYCLLLFPQLDVS
 RL

TRTRPLE – GFP Tag – V

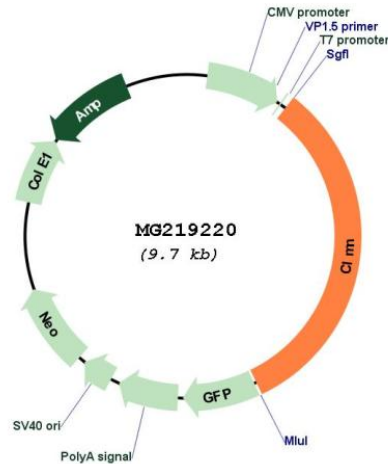
Restriction Sites:

Sgfl-MluI

Cloning Scheme:



Plasmid Map:



ACCN: NM_053155

ORF Size: 3156 bp

OTI Disclaimer: The molecular sequence of this clone aligns with the gene accession number as a point of reference only. However, individual transcript sequences of the same gene can differ through naturally occurring variations (e.g. polymorphisms), each with its own valid existence. This clone is substantially in agreement with the reference, but a complete review of all prevailing variants is recommended prior to use. [More info](#)

OTI Annotation: This clone was engineered to express the complete ORF with an expression tag. Expression varies depending on the nature of the gene.

Components:	The ORF clone is ion-exchange column purified and shipped in a 2D barcoded Matrix tube containing 10ug of transfection-ready, dried plasmid DNA (reconstitute with 100 ul of water).
Reconstitution Method:	<ol style="list-style-type: none">1. Centrifuge at 5,000xg for 5min.2. Carefully open the tube and add 100ul of sterile water to dissolve the DNA.3. Close the tube and incubate for 10 minutes at room temperature.4. Briefly vortex the tube and then do a quick spin (less than 5000xg) to concentrate the liquid at the bottom.5. Store the suspended plasmid at -20°C. The DNA is stable for at least one year from date of shipping when stored at -20°C.
RefSeq:	<u>NM_053155.2</u> , <u>NP_444385.2</u>
RefSeq Size:	11962 bp
RefSeq ORF:	3159 bp
Locus ID:	94040
UniProt ID:	<u>Q8C5W0</u>
Cytogenetics:	12 E