

Product datasheet for **MG219213**

Thbs4 (NM_011582) Mouse Tagged ORF Clone

Product data:

Product Type:	Expression Plasmids
Product Name:	Thbs4 (NM_011582) Mouse Tagged ORF Clone
Tag:	TurboGFP
Symbol:	Thbs4
Synonyms:	TSP4
Mammalian Cell Selection:	Neomycin
Vector:	pCMV6-AC-GFP (PS100010)
E. coli Selection:	Ampicillin (100 ug/mL)



[View online »](#)

ORF Nucleotide Sequence:

>MG219213 representing NM_011582
 Red=Cloning site Blue=ORF Green=Tags(s)

TTTTGTAATACGACTCACTATAGGGCGGCCGGGAATTCGTCGACTGGATCCGGTACCGAGGAGATCTGCC
 GCC**CGGATCGCC**

ATGCCGGCCCCACGCGCGCCGCGGCCCTTCTCTGCTGCACCTGGTCTGCAGCCGTGGCAGCGGA
 CGAGCGCCAGGCCACACCCAGGTCTTTGATCTTCTACCGTCCAGCCAGAGGCTGAACCCAGCGC
 CCTGCAGCCAGTCTGACAGATCCACCCTGCACGAAGTCTATCTCATCTCCACCTTCAAGCTGCAGAGT
 AAAAGCTCAGCCACCATCTTTGGCCTCTACTCCTCAAGTGACAACAGCAAATACTTTGAATTCACCTGTGA
 TGGGACGGCTGAACAAAGCCATCTCCGCTACCTGAAGAATGATGGAAAGATCCATCTGGTGGTGTCAA
 CAACTTGCAGCTGGTGTATGGGAGGCGCCACAGGGTTCTCTGAGACTGAGCAATTTGCAGAGAGGAGAT
 GGCTCTGTAGAATCTACCTGGACTGCGCTCAGGCGGACTCGGTGCGCAACCTCCCAGAGCCTTTTCTG
 GCCTCACCCAGAACCAGAGTCCATTGAATTGCGGACATTCAGAGGAAGCCCCAGGACTTCTTGAAGA
 GCTGAAGCTGGTGGTGGGGCTCGCTGTTCCAGGTGGCCAGCCTCCAAGACTGCTTCTGCAGCAGAGT
 GAGCCTCTGGCTGCCACAAGCACAGGAGACTTTAATCGACAGTTCCTGGGTCAAATGACACAACCTGAACC
 AGCTCCTTGGAGAGGTGAAAGATCTTCTGAGGCAGCAGGTCAAGGAAACATCGTTTTTGGCAAACACCAT
 TGCTGAATGCCAAGCTTGTGGTCTCTCAGCTTTCAGTCCCCAACTCAAACACACTGGTGGCCATAGCT
 CCTCCAGCACCCCAACTCGCCAAACACGCCACTGTGACTCCAGCCCTTGTTCGAGGTGTCCGATGTA
 CGGACACCAGGGATGGCTTCCAGTGTGGACCCTGCCAGATGGTTACACGGGAAACGGGATCACCTGCTC
 TGACGTGGATGAGTGAAATACCATCCCTGCTATCCAGGTGTGCGCTGTGTGAATTTGGCTCCGGGTTTC
 AGATGTGACGCCCTGTCCAGTAGGTTTACAGGGCCCATGGTGCAGGGTGTGCGGATCAACTTTGCTAAAA
 CAAACAAGCAGGTGTGCACTGATGTTGATGAGTGCAGAATGGAGCGTGTGTTCTGAATTCATATCGCAT
 TAACACTTTGGGATCTTATCGCTGTGGCCTTGCAAACAGGGTACACTGGTGTATCAGACGAGGGGATGC
 AAGACTGAAAGGAGCTGCCGGAACCCAGAGCAGAACCCATGCAGTGTGCATGCGCAGTGCATTGAGGAGC
 GGCAAGGGGATGTGACGTGTGTGTGGTGTGGCTGGGCTGGTACGGCTATGTCTGTGAAAGGATGT
 GGACATTGACAGTTACCCTGATGAAGAAGTCCATGCTCTGCCAGGAACTGCAAGAAGGATAACTGCAAG
 TATGTGCCAAACTCTGGCCAGGAAGATGCAGACAGAGATGGCATCGGAGACGCGTGTGATGAGGATGCAG
 ATGGAGATGGGATCTTGAATGAACAGGACAAGTGTCTGACTCACAATATAGACCAAAGGAACAGTGA
 TAAAGATATCTTTGGGGATGCCTGTGACAAGTCCCGGATGGTCTGAATAATGACCAGAAGGATACTGAC
 GGGGATGGGAGAGGAGACGCTGTGATGACGACATGGATGGAGATGGAATAAAAACATTTTGGACAAGT
 GTCCCAGAGTTCCCAACCGTGACCAGCAGGATCGGGATGGTGTGATGTGCGGAGACGCTTGTGACAGCTG
 TCTGATGTGAGTAAACCCTAACCCAGTCCGATGTGGATAACGATCTGGTTGGGGACTCCTGTGACACCAAC
 CAAGACAGTGACGGGGATGGCCACCAGGACAGCACAGACAAGTCCCCACAGTCATTAACAGCTCCCAGC
 TGGACTGTGACAAAGATGGGATCGGCGATGAATGTGATGACGATGACGATAACGATGGCATCCCAGACCT
 GGTGCCTCCTGGCCAGACAAGTGCAGGCTCGTCCCAACCCAGCCAGGAAGATAGCAACAATGACGGG
 GTAGGAGATATCTGTGAAGCTGACTTCGACCAGGACCAGTTCATCGATCACATTGATGTGTGCCCTGAGA
 ATGCGGAGATCACCTGACTGACTTCAGGGCCTACCAGACAGTGGTCTGGACCTGAAGGGGATGCTCA
 GATCGACCCCAACTGGGTGGTCTGAACCAGGGCATGGAATTTGTCAGACCATGAACAGTGAACCTGGC
 CTAGCTGTTGGGTACACGGCATTTAACGGAGTTGACTTTGAAGGGACCTCCACGTAAACACCCAGACAG
 ATGATGACTATGTGGCTTTATTTTTGGTTACCAAGACAGCTCCAGCTTCTATGTAGTCAATGTGGAAGCA
 AACGGAGCAGACATACTGGCAGGCTACACCGTTCCGTGCAGTAGCAGAACCTGGTATTGACTCAAGGCT
 GTGAAGTCTAAAAGTGGCCAGGGGAACATCTCCGAAACTCCCTGTGGCACACAGGGGACACCAGCGACC
 AGGTGAGGCTGCTGTGGAAGGACTCCAGGAATGTGGGCTGGAAGGACAAGGTCTCCTACCCTGTTCTCT
 GCAGCATAGGCCCCAGGTGGCTACATCAGGGTGCCTTTATGAAGGCTCGGAGTTGGTGGCTGACTCT
 GGGGTACCATAGACACCACCATGCGTGGAGGCCGACTTGGTGTGTTCTGCTTCTCAAGAAAACATCA
 TCTGGTCAAACCTCAAGTACCGCTGCAACGACACCATAACCAGGAGACTTCCAGGAGTTCCAGACCCAGAG
 TTTTGACCGCTTGATAAT

AG**CGGACCG**ACGCGTACGCGGCCGCTCGAG - GFP Tag - GTTTAA

Protein Sequence: >MG219213 representing NM_011582
 Red=Cloning site Green=Tags(s)

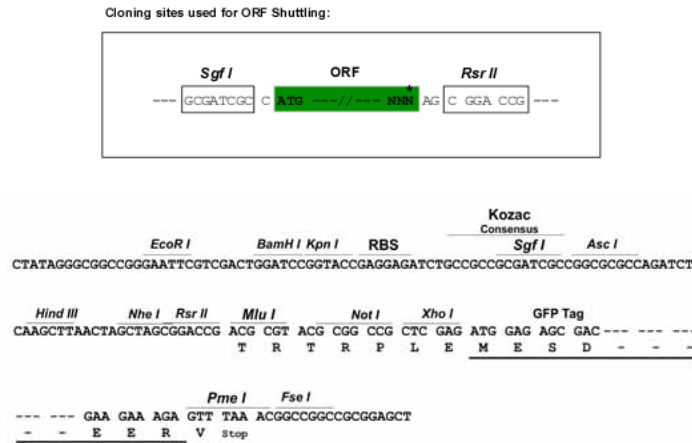
```

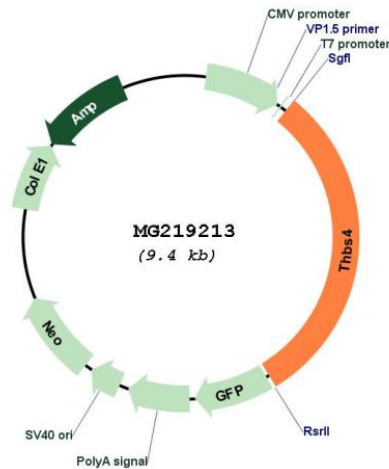
MPAPRAAAAAFLLLHLVLQPWQRTSAQATPQVFDLLPSSSQRLNPSALQPVLTDPTLHEVYLSTFKLQS
KSSATIFGLYSSSDNSKYFEFTVMGRLNKAILRYLKNDGKIHLLVFNQLADGRRHRVLLRLSNLQRGD
GSVELYLDCAQADSVRNLPRAFSGLTQNPESIELRTFQRKPQDFLEELKLVVRGSLFQVASLQDCFLQQS
EPLAATSTGDFNRQFLGQMTQLNQLLGEVKDLLRQQVKETSFLRNTIAECQACGPLSFQSPPTNLVPIA
PPAPPTRPTRHCDSSPCFRGVRCCTDRDGFQCGPCPDGYTGNGITCSDVDECKYHPCYPGVRCVNLAPGF
RCDACPVGFTGPMVQGVGINFAKTNKQVCTDVDECCQNGACVLSICINTLGSYRCGPCPKGYTGDQTRGC
KTERSCRNPEQNPCSVHAQCIEERQGDVTCVCGVGWAGDGYVCGKDVIDSYDPDEELPCSARNCKKDNCK
YVPNSGQEDADRDGIGDACEDEDAGDGI LNEQDNCVLTHNIDQRNSDKDIFGDACDNCRMVLNNDQKDTD
GDGRGDACDDMDGDGDIKNILDNCPRPVNRDQQDRDGDVGDACDSCPDSVNPQSDVDNDLVGDSCDTN
QSDGDGHDQDSTDNCPVINSSQLDTDKDGIGDECDDDDDNDGIPDLVPPGPDNCRLVPNPAQEDSNNDG
VGDICEADFDQDQVIDHIDVCPENAEITLDFRAYQTVVLDPEDAQIDPNWVVLNQGMIEVQTMNSDPG
LAVGYTAFNGVDFEGTFHVNTQTDYAGFIFGYQDSSSFYVVMWKQTEQTYWQATPFRAVAEPIQLKA
VKSKTGPGEHLRNSLWHTGDTSDQVRLWKDSRNVGWKDKVSYRWFLQHRPQVGYIRVRFYEGSELVADS
GVTIDTTMRGRLGVFCFSQENI IWSNLKYRCNDTIPEDFQEFQTQSFDRLDN
  
```

SGPTRRRLE - GFP Tag - V

Restriction Sites: SgfI-RsrII

Cloning Scheme:



Plasmid Map:


ACCN: NM_011582

ORF Size: 2889 bp

OTI Disclaimer: Due to the inherent nature of this plasmid, standard methods to replicate additional amounts of DNA in *E. coli* are highly likely to result in mutations and/or rearrangements. Therefore, OriGene does not guarantee the capability to replicate this plasmid DNA. Additional amounts of DNA can be purchased from OriGene with batch-specific, full-sequence verification at a reduced cost. Please contact our customer care team at custsupport@origene.com or by calling 301.340.3188 option 3 for pricing and delivery.

The molecular sequence of this clone aligns with the gene accession number as a point of reference only. However, individual transcript sequences of the same gene can differ through naturally occurring variations (e.g. polymorphisms), each with its own valid existence. This clone is substantially in agreement with the reference, but a complete review of all prevailing variants is recommended prior to use. [More info](#)

OTI Annotation: This clone was engineered to express the complete ORF with an expression tag. Expression varies depending on the nature of the gene.

Components: The ORF clone is ion-exchange column purified and shipped in a 2D barcoded Matrix tube containing 10ug of transfection-ready, dried plasmid DNA (reconstitute with 100 ul of water).

- Reconstitution Method:**
1. Centrifuge at 5,000xg for 5min.
 2. Carefully open the tube and add 100ul of sterile water to dissolve the DNA.
 3. Close the tube and incubate for 10 minutes at room temperature.
 4. Briefly vortex the tube and then do a quick spin (less than 5000xg) to concentrate the liquid at the bottom.
 5. Store the suspended plasmid at -20°C. The DNA is stable for at least one year from date of shipping when stored at -20°C.

RefSeq: [NM_011582.2](#)

RefSeq Size: 3202 bp

RefSeq ORF: 2892 bp

Locus ID: 21828

UniProt ID: [Q9Z1T2](#)

Cytogenetics: 13 47.75 cM

Gene Summary: Adhesive glycoprotein that mediates cell-to-cell and cell-to-matrix interactions and is involved in various processes including cellular proliferation, migration, adhesion and attachment, inflammatory response to CNS injury, regulation of vascular inflammation and adaptive responses of the heart to pressure overload and in myocardial function and remodeling. Binds to structural extracellular matrix (ECM) proteins and modulates the ECM in response to tissue damage, contributing to cardioprotective and adaptive ECM remodeling. Plays a role in ER stress response, via its interaction with the activating transcription factor 6 alpha (ATF6) which produces adaptive ER stress response factors and protects myocardium from pressure overload. May contribute to spinal presynaptic hypersensitivity and neuropathic pain states after peripheral nerve injury. May play a role in regulating protective astrogenesis from the subventricular zone (SVZ) niche after injury in a NOTCH1-dependent manner.
[UniProtKB/Swiss-Prot Function]