

Product datasheet for **MG219212**

Cd163 (NM_053094) Mouse Tagged ORF Clone

Product data:

Product Type:	Expression Plasmids
Product Name:	Cd163 (NM_053094) Mouse Tagged ORF Clone
Tag:	TurboGFP
Symbol:	Cd163
Synonyms:	CD163v2; CD163v3
Mammalian Cell Selection:	Neomycin
Vector:	pCMV6-AC-GFP (PS100010)
E. coli Selection:	Ampicillin (100 ug/mL)
ORF Nucleotide Sequence:	>MG219212 representing NM_053094 Red=Cloning site Blue=ORF Green=Tags(s)

TTTTGTAATACGACTCACTATAGGGCGGCCGGAATTCGTCGACTGGATCCGGTACCGAGGAGATCTGCC
GCC**CGATCGCC**

ATGGGTGGACACAGAATGGTTCTTCTGGAGGTGCTGGATCTCCTGGTTGTAAAAGGTTTGTCCATCTAG
GTTTCTTTGTGGCTGTGAGCTCACTTCTCAGTGCCTCTGCTGTCACTAACGCTCCTGGAGAAATGAA
GAAGGAAGTGGAGTGGCGGGTGGTAAAACAAGTGTAGTGGGAGAGTGGAACTTAAGATCCATGACAAG
TGGGGCACAGTGTGCAGTAACGGCTGGAGCATGAATGAAGTGTCCGTGGTTTCCAGCAGCTGGGATGCC
CAACTTCTATTAAGCCCTTGGATGGGCTAACTCCAGCGCCGGCTCTGGATATATCTGGATGGACAAAGT
TTCTTGTACAGGGAATGAGTCAGCTCTTGGGACTGCAAACATGATGGGTGGGAAAGCATAAAGTGTACC
CATGAAAAAGATGCTGGAGTGACCTGCTCAGATGGATCTAATTTGGAGATGAGACTGGTGAACAGTGCAG
GCCACCGATGCTTAGGAAGAGTAGAAAATAAGTTCCAGGGAAAGTGGGGACGGTGTGTGACGACAACTT
CAGCAAAGATCACGCTTCTGTGATTTGTAACAGCTTGGATGTGGAAGTGCCATTAGTTTCTCTGGCTCA
GCTAAATTGGGAGCTGGTTCTGGACCAATCTGGCTCGATGACCTGGCATGCAATGGAAATGAGTCAGCTC
TCTGGGACTGCAAACACCGGGGATGGGGCAAGCATAAAGTGTGACCATGCTGAGGATGTCCGTGTGATTTG
CTTAGAGGGAGCAGATCTGAGCCTGAGACTAGTGGATGGAGTGTCCAGATGTTTCCAGGAAGATTGGAAGTG
AGATTTCAAGGAGAAATGGGGACCGTGTGTGATGATAACTGGGATCTCCGGGATGCTTCTGTGGTGTGCA
AGCAACTGGGATGTCCAAGTCCATCAGTGCATTGGTTCGAGTTAATGCCAGTGAGGGATCTGGACAGAT
TTGGCTTGACAACATTTTCATGCGAAGGACATGAGGCAACTCTTTGGGAGTGTAAACACCAAGAGTGGGGA
AAGCATTACTGTCATCATAGAGAAGACGCTGGCGTGACATGTTCTGATGGAGCAGATCTGGAAGTGTAGAC
TTGTAGGTGGAGGCAGTCGCTGTGCTGGCATTGTGGAGGTGGAGATTGAGAAAGTGTGAGGAAAGATGTG
TAGCCGAGGCTGGACACTGGCAGATGCGGATGTGGTTTGCAGACAGCTTGGATGTGGATCTGCGCTTCAA
ACCCAGGCTAAGATCTACTCTAAAAGTGGGCAACAAATACGTGGCTCTTCTGGATCTTGAATGGAA
ATGAAACTACTTTTTGGCAATGCAAAAAGTGGCAGTGGGGCGCCTTTCCTGTGATAATTTGGAAGAAGC
CAAAGTTACCTGCTCAGGCCACAGGAACCCAGACTGGTTGGAGGAGAAATCCCATGCTCTGGTCTGTG



GAAGTGAACACGGAGACGTGTGGGGCTCCGTCTGTGATTTTGACTTGTCTCTGGAAGCTGCCAGTGTGG
 TGTGCAGGGAATTACAATGTGGAACAGTCGTCTATCCTAGGGGGAGCACAATTTTGAGAAGGAAGTGG
 ACAGATCTGGGGTGAAGAATCCAGTGTAGTGGGGATGAGTCCCATCTTTCACTATGCTCAGTGGCGCCC
 CCGCTAGACAGAACTTGTACCCACAGCAGGGATGTCAGCGTAGTCTGCTCAGCATACATAGATATTCGTC
 TGGCAGGCGGCGAGTCTCCTGTGAGGGAAGAGTGGAGCTCAAGACACTCGGAGCCTGGGGTCCCCTCTG
 CAGTTCTCATTGGGACATGGAAGATGCTCATGTCTTATGTCAGCAGCTGAAGTGTGGGGTGGCCAACT
 ATTCCAGAAGGAGCACATTTTGGGAAAGGAGCTGGTCAGGTCTGGAGTCACATGTTCCAGTGCACATGGAA
 CTCAGGAACATATAGGAGATTGCCTCATGACTGCTCTGGGTGCGCCGACGTGTTCCGAAGGACAGGTGGC
 CTCTGTCTCTGCTCAGGAAACCAATCCCAGACACTATTGCCATGTAGTTCATTGTCTCCAGTCCAAACA
 ACAAGCTCTACAATCCAAAGGAGAGTGAAGTTCCTGCATAGCAAGTGGCCAGCTTCGCTTGGTAGGTG
 GAGGTGGTCGCTGCGCTGGAAGAGTGGAGGTCTACCACGAGGGCTCTTGGGGCACCGTCTGTGATGACAA
 TTGGGATATGACTGATGCCAATGTGGTGTGCAAGCAGCTGGACTGTGGCGTGGCAATTAACGCCACTGGC
 TCTGCTTACTTCGGGGAAGGAGCAGGAGCTATCTGGCTAGACGAAGTCATCTGCACTGGGAAAGAGTCTC
 ATATTTGGCAGTCCATTACATGGCTGGGGACGCCATAACTGCAGGCACAAAGAAGATGCAGGTGTTAT
 CTGCTCCGAGTTCATGTCTCTGAGGCTGACCAACGAAGCCACAAGAAAAGTGCACAGGTGCCTTGAA
 GTGTTTTACAATGGTACATGGGGCAGTATTGGCAGTAGCAATATGTCTCCAACCACTGTGGGGTGGTGT
 GCCGTCAGCTGGGCTGTGCAGACAACGGGACTGTGAAACCCATACCTTCAGACAAGACACCATCCAGGCC
 CATGTGGGTAGATCGTGTGCAAGTGTCCAAAAGGAGTTGACACTTTGTGGCAGTGGCCCTCGTCACCTTGG
 AAACAGAGACAGGCCAGCCCCTCCTCCCAGGAGTCTGGATCATCTGTGACAACAAAATAAGACTCCAGG
 AAGGGCATAACAGACTGTTCTGGAGCTGTGGAGATCTGGCACAAGGTTCTGGGGAACAGTGTGTGATGA
 CTCCTGGGATCTTAATGATGCTAAGGTTGTATGTAAGCAGTTGGGCTGTGGCCAAGCTGTGAAGGCACTA
 AAAGAAGCAGCATTGGTCCAGGAACCTGGGCCATATGGCTCAATGAAATTAAGTGTAGAGGGAATGAGT
 CTTCCCTGTGGGATTGCTCTGCCAAACCTGGGACTCACAGCGACTGTGGGCACAAAGAAGATGCTTCCAT
 CCAGTGCCTCCAAAAATGACTTCAGAATCACATCATGGCAGAGTCAACCCACCTCACGGCAGCTTTG
 GTTTGTGGAGCCATTCTATTGGTCTCCTCATTGTCTTCTCCTGTGGACTCTGAAGCGACGACAGATTC
 AGCGACTTACAGTTTCTCAAGAGGAGAGGTCTTGATACATCAAGTTCAGTACCAAGAGATGGATTCAAA
 GGCGGATGATCTGGACTTGTGAAATCCTCGGGGTCAATCAGAGGCACACTGAGAAGGAAAATGATAAT
 TTA

ACGCGTACGCGGCCGCTCGAG - GFP Tag - GTTTAA

Protein Sequence:

>MG219212 representing NM_053094
 Red=Cloning site Green=Tags(s)

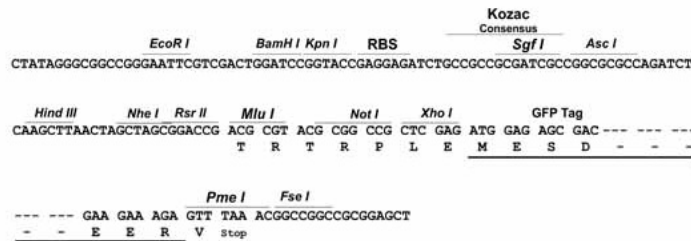
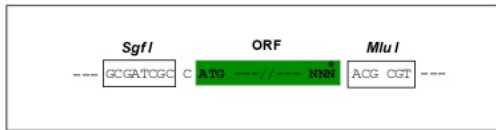
MGGHRMVLLGGAGSPGCKRFVHLGFFVAVSSLLSASAVTNAPGEMKELRLAGGENNCSGRVELKIHDK
 WGTVCSNGWSMNEVSVVCQQLGCPTSICALGWANSSAGSGYIWMKVSCTGNEALWDCKHDGWGKHNC
 HEKDAGVTCSDGSNLEMRLVNSAGHRCLGRVEIKFQGWGTVCDDNF SKDHASVICKQLGCGSAISFSGS
 AKLGAGSGPIWLDLACNGNESALWDCKHRGWGKHNCDAEDVGVICLEGADLSLRLVDGVSRCRLE
 RFQGEWGTVCDDNWL RDASVVCQQLGCPTAISAIGRVNASEGSGQIWL DNI SCEGHEATLWECKHQEWG
 KHYCHHREDAGVTCSDGADLELRLVGGGSRGAGIVEVEIQKLTGKMCSRGWTLADADVVCRLGCGSALQ
 TQAKIYSKTGATNTWLFPGSCNGNETTFWQCKNWQWGLSCDNFEEAKVTCSGHREPRLVGGEIPCSGRV
 EVKHGDVWGSVCDFDLSLEAASVVCRELQCGTVVSI LGGAHFEGESGQIWGEFQCSGDESHLSLCSVAP
 PLDRTCTHSRDVSVVCSRYIDIRLAGGESSCEGRVELKTLGAWGPLCSSHWMEDAHVLCQQLKCGVAQS
 IPEGAHFGKAGQVWSMFHCTGTEEHIGDCLMTALGAPTCSEGVASVICSGNQSQTLPCSSSPVQT
 TSSTIPKESEVPCIASGQLRLVGGGRCAGRVEVYHEGSWGTVCDDNWDMDANVVCQQLDCGVAINATG
 SAYFGEAGAIWLDDEVICTGKESHVQCHSHGWGRHNRHKEDAGVICSEFMSLRLTNEAHKENCRTGRLE
 VFYNGTWGSISSNMSPTTVGVVCRQLGCADNGTVKPIPSDKTPSRPMWVDRVQCPKGVDTLWQCPSSPW
 KQRQASPSQESWII CDNKIRLQEGHTDCSGRVEIWHKGSWGTVCDDSWDLNDAKVVCQQLGCGQAVKAL
 KEAAFGPGTGIWLN EIKCRGNESSLWDCPAKPWSHSDCGHKEDASIQCLPKMTSESHHGTGHPTLTALL
 VCGAILLVLLIVFLLWTLKRRQIQRLTVSSRGEVLIHQVYQEMDSKADDL LKSSGVIQRHTEKENDN
 L

TRTRPLE - GFP Tag - V

Restriction Sites: SgfI-MluI

Cloning Scheme:

Cloning sites used for ORF Shuttling:



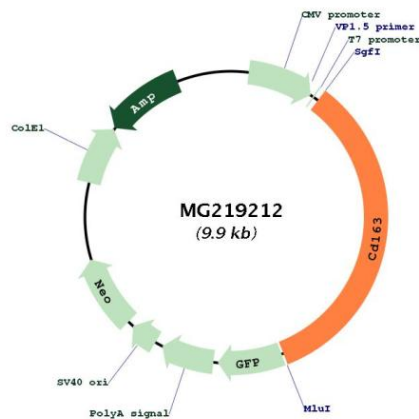
ACCN: NM_053094

ORF Size: 3363 bp

OTI Disclaimer: The molecular sequence of this clone aligns with the gene accession number as a point of reference only. However, individual transcript sequences of the same gene can differ through naturally occurring variations (e.g. polymorphisms), each with its own valid existence. This clone is substantially in agreement with the reference, but a complete review of all prevailing variants is recommended prior to use. [More info](#)

OTI Annotation:	This clone was engineered to express the complete ORF with an expression tag. Expression varies depending on the nature of the gene.
Components:	The ORF clone is ion-exchange column purified and shipped in a 2D barcoded Matrix tube containing 10ug of transfection-ready, dried plasmid DNA (reconstitute with 100 ul of water).
Reconstitution Method:	<ol style="list-style-type: none">1. Centrifuge at 5,000xg for 5min.2. Carefully open the tube and add 100ul of sterile water to dissolve the DNA.3. Close the tube and incubate for 10 minutes at room temperature.4. Briefly vortex the tube and then do a quick spin (less than 5000xg) to concentrate the liquid at the bottom.5. Store the suspended plasmid at -20°C. The DNA is stable for at least one year from date of shipping when stored at -20°C.
RefSeq:	NM_053094.2 , NP_444324.2
RefSeq Size:	4409 bp
RefSeq ORF:	3366 bp
Locus ID:	93671
UniProt ID:	Q2VLH6
Cytogenetics:	6 F2
Gene Summary:	Involved in clearance and endocytosis of hemoglobin/haptoglobin complexes by macrophages and may thereby protect tissues from free hemoglobin-mediated oxidative damage. May play a role in the uptake and recycling of iron, via endocytosis of hemoglobin/haptoglobin and subsequent breakdown of heme. Binds hemoglobin/haptoglobin complexes in a calcium-dependent and pH-dependent manner. Induces a cascade of intracellular signals that involves tyrosine kinase-dependent calcium mobilization, inositol triphosphate production and secretion of IL6 and CSF1 (By similarity). [UniProtKB/Swiss-Prot Function]

Product images:



Circular map for MG219212

