

Product datasheet for **MG219207**

Cd101 (NM_001099332) Mouse Tagged ORF Clone

Product data:

Product Type: Expression Plasmids
Product Name: Cd101 (NM_001099332) Mouse Tagged ORF Clone
Tag: TurboGFP
Symbol: Cd101
Synonyms: Gm734; Gm1016; Igsf2
Mammalian Cell Selection: Neomycin
Vector: pCMV6-AC-GFP (PS100010)
E. coli Selection: Ampicillin (100 ug/mL)
ORF Nucleotide Sequence: >MG219207 representing NM_001099332
Red=Cloning site Blue=ORF Green=Tags(s)

TTTTGTAATACGACTCACTATAGGGCGGCCGGAATTCGTCGACTGGATCCGGTACCGAGGAGATCTGCC
GCC**CGATCGCC**

ATGTTTAAAACCTCTCTGTTCATCAGTTTCTGCTAAGTTCAGCATCGGCCAGAGGGAAGTAAAAATCAAG
AAGGCCCTCTGTACAGAGCCGAAGGTTACCCTGTCAGCATCAGGTGCACCGTAAGTGGTCATCAGGGTCC
TTCCACGCAGGATTTCCGGTGGTCTATTTACCTGCCAAGCGCCCCGACCAAGGAAGTCCAGATCATCAGT
ACCAAGGATGCCGGCTTCTTTACGCAGTGTATGCCAGAGGGTGCAAAGCAAGGAGATCTACATAGAGA
GGCTGCAGGGTGACTCGGTCCTGTGCATATCTCAAACTCCAGATGAAAGATGTGGCGAGTACGAGTG
CCACACACCCAACACGGATGGGAAGTACTTTGGAAGTTACAGTGCAAAGACAAATCTTACTGTGGTCCC
GACACCCTGTCTGCCACCATGCCCTCCCAGACGCTCAGTAAGAAGGAAGGTGAGCCCTTGGAACTCACCT
GTGAGACAACAAAGCCACCGTGCAACACACCCATCTCTCTCACCTGGTACCTGATGCAGGAAGGAGG
AGGGAGCCAAGCCACTGAGATCGTTTCTCTCCAAGGACTTTGTATTGACCCCTGGGTCCTCCTATGCA
GACAGGTTTGTGGCCGGTGTGTACGGCTGGACAAGCTTGAGCCACTTCCTTCAGGCTGTCTGTAGGCA
AGCTCCAGCCCTCAGATCAGGGCCAGGTGTTCTGTGAGGCCACAGAATGGATTCCAGATCCAGATGAAAC
GTGGACTTTGATCACAAGAAAGCAGACAGATCAAACAGCTCTGAGGATCCAGCCGGCAGCAAGAGATTTT
ACAGTGAGCATCACAGCCAGTAGCTCACCTGATGAAGGAAAACCCCTTGGAACTGGTTTGCCTGGCTGTTG
GCAGAGATGGTAACCCGAGCTTCAGGGTGTGTGGTTTCTCAATGGGAAGGAAATTGCCAGACTGATGC
TGGTGGGGTCTGGACCTGAAGAGAGACTACAGAGACAGAGCGAGCCAAGGCCAGCTGCAGGTGTCAAAG
TTAAGTGCCAGACGTTCTCTCAAGATCTTCTCCGTGGGTCCAGAGGATGTAGGCACCTACAGTTGTG
AAGTGGCAGAGGTGGCGAGGACTCAGATGGGCTCCTGGCAGGTACTTCAGAGAAAGCAGTACCAGGCTA
CCGGGTGCAGCTGAGGGAGCCAGCAGCAAGAAGTGTGACCGTGTCTGCCGAGCAGCTACTGTGTGGAA
GGAGAGACGTTACCCTTCTCTGCAAGGCAGCTGGGGATGTGAGTGTCTATCTGTGAGTTGGTGGCTCA
CCCCACAGGACCAGTCCACACCCGTGTTTGTGGCTGGCATGGGGCAAGATGGTACTGTGCAGCTGGGAGT
CTTTCTCCGGGCCCTGCGCACCGTGGTAACAGGAGGCTGGAGAAAGTGGACTGGCCACCTTTCGGCTG



[View online >](#)

GAGATTGCCTCTGCCATGGTCACAGACAGCGGTACCTATGAATGCAGGGTGTGAGAGAGACTCCAGAACC
 AGGCCAAAGTTTGCAGTCAACCCAGAAGATTTTCAGTCACTGTAAAATCTCTGAAGTCAAGTTTACGAGT
 TAATCTGATGAGCCGTACGCCACAAGTATGCTAGCCCATACCTTCCACCTGTCTGTGTAGTGAGGGCC
 AACTACTCGGATCTAAGCTGCCGTTCTCGGTAACGTGGCAGTTCAGCCAGCGGGCTCTGGAGCCTTTC
 ATCGGCTTATTCGAATTGCCACAATGGCACCGTTGAATGGGGGACGTCCTCTCCAGATCCACAGGAA
 GACGAAGTGTACAGTCTTTCTTTTCGTTCTCACTCCAAATCTACGATGCAGCTATGGAGGAGACAGGG
 GTGTATCGGTGTACAGTGGAGTTTATGACAGAGATTCCATATGCACAAGTGGCCAGCCAGCAGATCTG
 CCACCTTAACCTATTAATGATTACTGTCACCTTTCAGAGAGCAAAGTGGAGCGTGAAGTCAAGCAGTCA
 GGTCCAAGAGCTATCCATCAGCTCCAGCACTCAGATAGAATGTGCCATCTTGTCCCGATCTGCTGGAAAC
 CTTCCGTTATCCATCATTGGTACTTCTCTTCCGTTTCTGCAAATGCATCCTATCTGAAAATCCTAGAAA
 TGGACCAAAGCAGTGTGTAATAATGGGGACGAATTTCAAACCCTCGGAGCAAGCAAAAATTTTATTC
 TGAGAAAGTTTCTCAAGACTTATTTCTGCTGAACATTCTGAGTGTGGAGGACAGTACCAGGGCCACTAC
 CACTGTGCTGTAGAGGAATGGCTCTTATCTACAAATGACACTTGGCAAAGCTTGAAGAAAGACTTCAG
 GACTCACAGAATTGAAACTCAGGCCACAGGAAGCCAGGTCATGTCTCAAAGTGAATTGGACAGGAAA
 CGCTACCGAGTATGGAGAGCGGGCTTCAGCTGCAGCCTAGATGGCTCAGGCAGCACAGCTTCCCTATAC
 TCTGTGACATGGTACCGGGCAGAGGAAGTCCACGGCTACTGCTGCCGAGTTGCCAATGCCACTGCCA
 CCATCACTGCCCCCGCAGGGAGTCAAATGCTGGTGCACCTGCAGTATGACGGCTTGTGCAGTATGGCAG
 AGAGGGGAGCAGGAGGCTCCAGCACTGCTACCGATCCTCTCCACAGACTTGTCTCTGAAGCTGCATCGG
 GTGAAAATGGAGGATGCTGGGATATATTGGTGCAGGGTACTGAGTGGCAGCAACATGGCCACCCAGGCA
 AGTGGATCAACCAAGCCTCAGGCGAGTGCACAACGAATGGTGTGTCAGGGTGTGCGCTCAGAGCCACGGT
 CTCCTCCCTGATCTGCTCCTCGGGGCCCTTGTCCACTTCTCATCGTCTGCCCTTCTGTCATGCTGCTC
 CTTCTGGCCACGTCCTTCTGCTTGTACCGGAAGGCCAGGAAGTTGTACAGCTGAGTCTCAGTGCAA
 AGAAAAGAAAGGCTCTCTGGGTGGCATGAGAAAGACATCACTTCAGAAGGAAGCTGGAGAGGAGAGTGG
 AACTAC

ACGCGTACGCGGCCGCTCGAG - GFP Tag - GTTTAA

Protein Sequence:

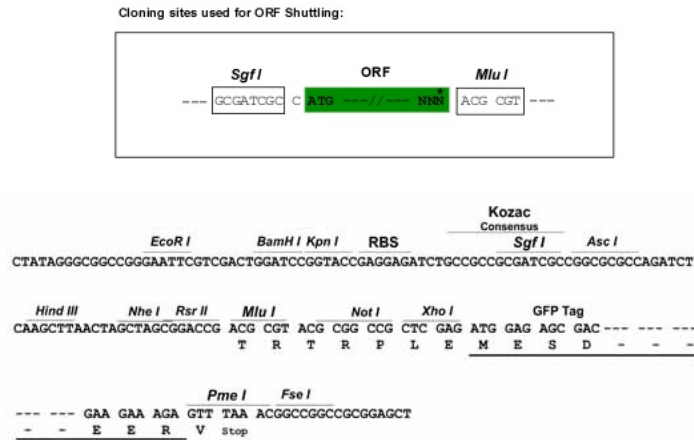
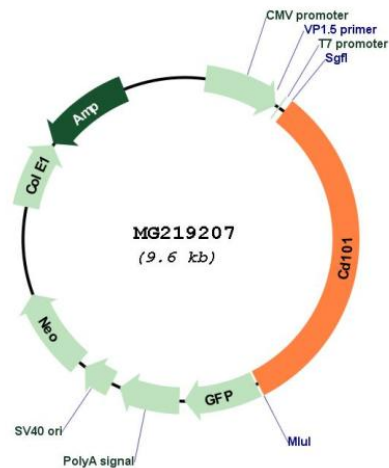
>MG219207 representing NM_001099332
 Red=Cloning site Green=Tags(s)

MFKTSLSSVSAKFSIGQREVKIIEGPLYRAEGYPVSIRCTVSGHQGPSTQDFRWSIYLPSAPTKEVQIIS
 TKDAGFSYAVYAQRVQSKEIYIERLQGDSVLLHISKLQMKDAGEYECHTPNTDGKYFGSYSAKTNLTVVP
 DTLSATMPSQTL SKKEGEPELETCETTKATVQHTHLSLWYLMQEGGGSQATEIVSLSKDFVLTGSSYA
 DRFVAGDVRLDKLGATSFRLSVGKLPQSDQGVFCEATEWIQDPDETWTLITRKQTDQALRIQPAARDF
 TVSITASSSPDEGKPLELVCLAVGRDGNPQLQGVWFLNGKEIAQTDAGGVLDLKRDYRDRASQGLQVSK
 LSAQTFSLKIFSVGPEDVGTYSCEVAEVARTQMGSWQVLQRKQSPGYRVQLREPAARSVTVSAEQRTVWE
 GETLTLCKAAGDVSALSVSWWLPQDQSTPVFVAGMGQDGTVQLGVSSPGPAHRGNRRLEKVDWATFRL
 EIASAMVTDSGTYECRVSERLQNAKGLQSTQKISVTVKSLKSSLRVNLMSRQPQVMLAHTFHLSCVVRA
 NYSDLKLPFSVTWQFQPAGSGAFHRLIRIAHNGTVEWGDVLSQIHRKTKVSQSFFRSQQLIYDAAMEETG
 VYRCTVEVYDRDSICTSGPARVSATSNLLMITVTFPESKLSVNSSSQVQELSISSSTQIECAILSRAGN
 LPLSIIWYFSSVSANASYLKILEMDQSSVVKYGDDEFQTPRSKQKFYSEKVSQDLFLLNILSVEDSDQGHY
 HCAVEEWLLSTNDTWQKLERKTSGLTELKLRPTGSQVHVSKVNWNTGNATEYGEAGFSCSLDGSSTASLY
 SVTWYRGRGTATAAAVANATATITAPAGSQMLVHLQYDGLLQYREGSRRLQHCYRSSPTDFVLKLRH
 VEMEDAGIYWCRTVEWQHGHPGKWINQASGESQRMVLRVLRSEPTVSSLICSSGPLLHLFLIVCPFVMLL
 LLATSFLLCYRKARKLSQLSLSAKKEKALWVGMRKTSLQKEAGEESGHY

TRTRPLE - GFP Tag - V

Restriction Sites:

Sgfl-MluI

Cloning Scheme:

Plasmid Map:

ACCN:

NM_001099332

ORF Size:

3087 bp

OTI Disclaimer:

The molecular sequence of this clone aligns with the gene accession number as a point of reference only. However, individual transcript sequences of the same gene can differ through naturally occurring variations (e.g. polymorphisms), each with its own valid existence. This clone is substantially in agreement with the reference, but a complete review of all prevailing variants is recommended prior to use. [More info](#)

OTI Annotation:	This clone was engineered to express the complete ORF with an expression tag. Expression varies depending on the nature of the gene.
Components:	The ORF clone is ion-exchange column purified and shipped in a 2D barcoded Matrix tube containing 10ug of transfection-ready, dried plasmid DNA (reconstitute with 100 ul of water).
Reconstitution Method:	<ol style="list-style-type: none">1. Centrifuge at 5,000xg for 5min.2. Carefully open the tube and add 100ul of sterile water to dissolve the DNA.3. Close the tube and incubate for 10 minutes at room temperature.4. Briefly vortex the tube and then do a quick spin (less than 5000xg) to concentrate the liquid at the bottom.5. Store the suspended plasmid at -20°C. The DNA is stable for at least one year from date of shipping when stored at -20°C.
RefSeq:	<u>NM_001099332.2</u> , <u>NP_001092802.2</u>
RefSeq Size:	3242 bp
RefSeq ORF:	3090 bp
Locus ID:	630146
Cytogenetics:	3 F2.2
Gene Summary:	Plays a role as inhibitor of T-cells proliferation induced by CD3. Inhibits expression of IL2RA on activated T-cells and secretion of IL2. Inhibits tyrosine kinases that are required for IL2 production and cellular proliferation. Inhibits phospholipase C-gamma-1/PLCG1 phosphorylation and subsequent CD3-induced changes in intracellular free calcium. Prevents nuclear translocation of nuclear factor of activated T-cell to the nucleus. Plays a role in the inhibition of T-cell proliferation via IL10 secretion by cutaneous dendritic cells (By similarity). [UniProtKB/Swiss-Prot Function]