

## Product datasheet for **MG219205**

### **Slc6a17 (NM\_172271) Mouse Tagged ORF Clone**

#### **Product data:**

Product Type:	Expression Plasmids
Product Name:	Slc6a17 (NM_172271) Mouse Tagged ORF Clone
Tag:	TurboGFP
Symbol:	Slc6a17
Synonyms:	D130012J15Rik; Ntt4
Mammalian Cell Selection:	Neomycin
Vector:	pCMV6-AC-GFP (PS100010)
E. coli Selection:	Ampicillin (100 ug/mL)



[View online »](#)

ORF Nucleotide  
Sequence:

>MG219205 representing NM\_172271  
Red=Cloning site Blue=ORF Green=Tags(s)

TTTTGTAATACGACTCACTATAGGGCGGCCGGGAATTCGTCGACTGGATCCGGTACCGAGGAGATCTGCC  
GCC**CGGATCGCC**

ATGCCGAAGAACAGCAAGGTGACCCAGCGCAACACAGCAATGAGCATGTCACCGAGTCAGTGGCTGACT  
TGCTGGCTCTGGAGGAGCCTGTGGACTACAAGCAGAGTGTACTGAACGTGGCCGGCGAGACAGGTGGCAA  
GCAGAAGGTGGCGGAGGAGGAGCTGGACACAGAGGACCGGCCAGCCTGGAATAGCAAGCTCAGTACATC  
CTGGCCCAGATTGGCTTCTCTGTGGCCTGGGCAACATCTGGAGGTTCCCTACCTGTGCCAGAAAAATG  
GAGGAGGTGCCTATCTGGTGCCTATCTGGTGTGCTTATCATCATTGGCATCCCCTCTTCTTTCTGGA  
GCTGGCTGTGGGCAGAGGATCCGCCGTGGCAGCATTGGTGTGTGGCACTATGTGTCCCCCGCCTGGGG  
GGCATCGGCTTTCCAGCTGTATTGTCTGCCTCTTCGTTGGGCTGTACTACAATGTGATCATTGGGTGGA  
GCGTCTTCTATTTCTCAAGTCTTCCAGTACCCACTGCCCTGGAGTGAATGTCCTGTATCAGGAATGG  
GACTGTAGCAGTGGTGGAGCCTGAGTGTGAGAAGAGCTCAGCTACTACCTACTTTTGGTACCGAGAGGCC  
TTGGACATCTCCAACCGATTTCCAGAGAGTGGGGCCCTCAACTGGAAGATGACACTCTGCCTCCTTGTGG  
CCTGGAGCATCGTGGCATGGCTGTCGTCGAAGGGCATCCAGTCCCTCTGGAAGGTAATGTATTTAGCTC  
CCTCTTCCCTTATGTGGTGTGGCCTGCTTCTGGTCCGGGGGCTGCTGCTTCGAGGGGAGTGGATGGC  
ATCCTGCACATGTTCACTCCTAAGCTGGACAAGATGCTGGACCCCGAGGTGTGGCGGGAGGCAGCCACAC  
AGGTCTTCTTCGCCCTGGGGCTGGGCTTTGGAGGCGTCATCGCCTTTCCAGCTACAACAAACAGGACAA  
TAACTGCCACTTCGATGCTGCCCTGGTGTCTTCACTCACTTCTTCACTCGGTGTTGGCCACCCCTCGT  
GTGTTTGTGTGCTGGGCTTCAAAGCCAACATCATGAATGAGAAGTGTGTGGTGCAGAATGCTGAGAAAA  
TTCTAGGGTACCTCAACTCCAATGTCTTGAGCCGGGACCTCATCCACCTCACGTCAACTTCTCACACT  
GACTACCAAGGACTACTCAGAGATGTACAGCGTCACTCATGACTGTTAAGGAGAAGCAGTCCCAGCCCTG  
GGCCTGGATCCCTGCCTCTTGGAGGATGAGCTGGACAAGGGCACAGGCCTGGCCTTCATCGCCTTCACTG  
AGGCCATGACACATTTCCCGCCCTCCCCGTTCTGGTCCGTATGTTCTTCTTGTGCTCATCAACCTGGG  
CCTGGGCAGCATGATCGGGACCATGGCAGGAATCACCACCCATCATCGACACCTTCAAGGTGCCCAAG  
GAGATGTTACAGTTGGCTGCTGTGCTTTGCATTCTTCGTGGGGCTGTTGTTCCGTCAGCGCTCCGGAA  
ACTACTTTGTACCATGTTTGTGACTATTCGGCCACCCTGCCACTCACCGTCATCGTCATCCTTGAGAA  
CATCGCTGTGGCCTGGATTTATGGAACCAAGAAGTTTATGCAGGAGCTGACAGAGATGCTGGGCTTCCAG  
CCGTATCGATTCTATTTCTACATGTGGAAGTTTGTGTCTCCACTGTGCATGGCTGTGCTCACCACAGCCA  
GCATCATCCAGCTGGGGGTGTCGCCCCAGGCTACAGTGCCTGGATCAAAGAGGAGGCTGCTGAGCGCTA  
CTTGTACTTCCCAACTGGGCCATGGCACTGCTGATCACCTCATTGCCGTGGCCACCCTGCCATCCCT  
GTGGTGTTCATCTGCGGCACTTCCACTTGTCTCCGACGGGTCCAACACCCTCTCTGTGTCTTACAAGA  
AGGGCCGCATGATGAAGGACATCTCAAATCTGGAGGAGAACGATGAGACGCGCTTCACTCAGCAAGGT  
GCCAGTGAGGCGCCCTCCCCATGCCACCCACCGCTCCTATCTGGGGCTGGCAGCACATCACCTTG  
GATAACAGCAACAATCCCAACGGACGCTATGGAAGCGGCTACCTTTGGCCAGCACCCCTGAGTCAGAGC  
TG

**ACGCGT**ACGCGGCCGCTCGAG - GFP Tag - GTTTAA

Protein Sequence: >MG219205 representing NM\_172271  
 Red=Cloning site Green=Tags(s)

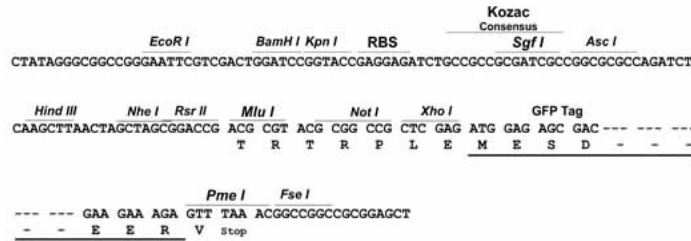
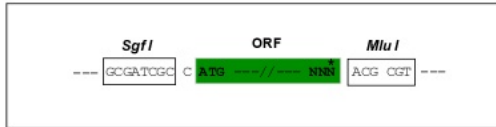
MPKNSKVTQREHSNEHVTESVADLLALEEPVDYKQSVLNVAGETGGKQKVAEEELDTEDRPAWNSKLQYI  
 LAQIGFSVGLGNIWRFPYLQKNGGGAYLVPYL VLLIIIGIPLFFLELAVGQRIIRRSIGVWHYVCPRLG  
 GIGFSSCIVCLFVGLYYNVIIGWSVFYFFKSFQYPLPWESECPVIRNGTVAVVEPECEKSSATTYFWYREA  
 LDISNSISESGGLNWKMTLCLLVAWSIVGMVVKGIQSSGKVMYFSSLFPYVVVLACFLVRGLLLRGAVDG  
 ILHMFTPKLDKMLDPQVWREAATQVFFALGLGFGGVIAFSSYNKQDNNCHFDAALVSFINFFTSVLATLV  
 VFAVLGFKANIMNEKCVVENAEKILGYLNSNLSRDLPVPHVNFSHLTTKDYSEMYSVIMTVKEKQFPAL  
 GLDPCLLEDELDKGTGLAFIAFTEAMTHFPASPFWSVMFFLMLINLGLGSMIGTMAGITTPIIDTFKVPK  
 EMFTVGGCVFAFFVGLLFVQRSGNYFVTMFDDYSATLPLTVIVILENIAVAWIYGTKKFMQELTEMLGFQ  
 PYRFYFYMWKFVSPLCMAVLTASIIQLGVSPPGYSAWIKEEAERYLYFPNWAMALLITLIAVATLPIP  
 VVFI LRHFHLLSDGSNTLSVSYKKGRMMKDISNLEENDETRFILSKVPSEAPSPMPHRSYLGPGSTSP  
 DNSNNPNGRYGSYLLASTPESEL

TRTRPLE - GFP Tag - V

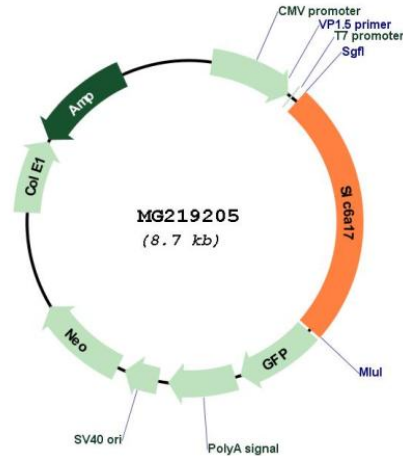
Restriction Sites: SgfI-MluI

Cloning Scheme:

Cloning sites used for ORF Shutting:



Plasmid Map:



ACCN: NM\_172271

ORF Size: 2172 bp

OTI Disclaimer: The molecular sequence of this clone aligns with the gene accession number as a point of reference only. However, individual transcript sequences of the same gene can differ through naturally occurring variations (e.g. polymorphisms), each with its own valid existence. This clone is substantially in agreement with the reference, but a complete review of all prevailing variants is recommended prior to use. [More info](#)

OTI Annotation: This clone was engineered to express the complete ORF with an expression tag. Expression varies depending on the nature of the gene.

Components: The ORF clone is ion-exchange column purified and shipped in a 2D barcoded Matrix tube containing 10ug of transfection-ready, dried plasmid DNA (reconstitute with 100 ul of water).

Reconstitution Method:

1. Centrifuge at 5,000xg for 5min.
2. Carefully open the tube and add 100ul of sterile water to dissolve the DNA.
3. Close the tube and incubate for 10 minutes at room temperature.
4. Briefly vortex the tube and then do a quick spin (less than 5000xg) to concentrate the liquid at the bottom.
5. Store the suspended plasmid at -20°C. The DNA is stable for at least one year from date of shipping when stored at -20°C.

RefSeq: [NM\\_172271.2](#), [NP\\_758475.1](#)

RefSeq Size: 6326 bp

RefSeq ORF: 2175 bp

Locus ID: 229706

UniProt ID: [Q8BJI1](#)

Cytogenetics: 3 F2.3

Gene Summary: Functions as a sodium-dependent vesicular transporter selective for proline, glycine, leucine and alanine. In contrast to other members of this neurotransmitter transporter family, does not appear to be chloride-dependent (By similarity).[UniProtKB/Swiss-Prot Function]