

Product datasheet for **MG219190**

Lnx1 (NM_001159577) Mouse Tagged ORF Clone

Product data:

Product Type:	Expression Plasmids
Product Name:	Lnx1 (NM_001159577) Mouse Tagged ORF Clone
Tag:	TurboGFP
Symbol:	Lnx1
Synonyms:	Lnx
Mammalian Cell Selection:	Neomycin
Vector:	pCMV6-AC-GFP (PS100010)
E. coli Selection:	Ampicillin (100 ug/mL)



[View online »](#)

ORF Nucleotide Sequence:

>MG219190 representing NM_001159577
 Red=Cloning site Blue=ORF Green=Tags(s)

TTTTGTAATACGACTCACTATAGGGCGGCCGGAATTCGTCGACTGGATCCGGTACCGAGGAGATCTGCC
 GCC**GCGATCGCC**

ATGAACCAACCGACCTGCAGATGACCCAGATCCAGTCCCAGCCTCTGTGCATAGTGTGGGCAA
 ACCACTCCCAGAGGAAAACCACTTCTACACGTACACAGAGGATGTAGATGACGACCTCATATGCCACAT
 CTGTCTGCAAGCATTGCTGGACCTCTGGACACTCCATGTGGACACACCTACTGCACCCTGTGTCTCACC
 AACTTCCTGGTGGAGAAGGACTTCTGCCCTGTGGATCGAAAGCCTGTGGTTCTGCAGCACTGCAAGAAAT
 CCAGTATCTTGGTCAACAAGCTTCTCAATAAGCTGTTGGTCACTGCCGTTTACGGAGCACTGCACTGA
 GGTGCTACAGCGCTGTGATCTCCAGCATCATTTCCAGACAAGCTGCAAAGGGCCCTCCACTATGGCCTG
 ACCAAGGACAGGAAAAGGCGCTCAAGATGGCTGTCTGATGGTTGCGCCAGCCTCATGGCAACGACGC
 TCTCCCAGAGGTTTCTGCAGCCGCCACCATCTCTTTAATGACAGATGAGCCTGGCCTAGACAACCTGC
 CTACGTGTCTCGTGGAGGATGGTGGAGCAGTAGCCAACCTCCTCAGACTCTGGCCGGAGCAACCGGACT
 AGGGCACGGCCCTTTGAGCGCTCCACTATGAGAAGCCGGTCTTTCAAGAAGATCAACCGAGCTCTAAGTG
 CTCTCCGGAGGACGAAGAGCGGGAGTGTGCTGGCAACCATGTTGACCAGGGCAGGGACAACCTCTGAGAA
 CACCACTGTCCCCGAAGTCTTCCAAGGTTGTTTACCTGATTCCAGATGGTGAATTAACAAGCATCAAA
 ATCAACAGAGCGGATCCCAGCGAAAGCCTCTCCATAAGGCTGGTGGGGGGCAGCGAGACGCCGCTGGTCC
 ACATCATCATCCAGCATATTTATCGCGATGGAGTGATTGCCAGAGATGGACGGCTGCTGCCAGGAGACAT
 CATTCTCAAGGTCAACGGCATGGACATCAGCAATGTCCCTCATAACTATGCCGTGCGGCTCTGCGGCAG
 CCCTGCCAGGTGCTGCGGCTAACGGTGTGCGGGAGCAGAAGTCCGTAGCAGAAGCAATGCCACGTGC
 CCGTACTCTATGGACCTCGGGATGACAGCTTCCATGTAATCCTCAACAAAAGCAGCCCGAGGAGCAGT
 TGGCATAAAGCTGGTGCCTGGGTGGATGAGCCCGGCGTGTTCATCTTCAACGTGCTAAATGGGGGTGTC
 GCCGACCGACACGGCCAGCTGGAGGAGAATGACCGTGTGCTGGCCATCAACGGGCATGACCTTCGATTTG
 GCAGTCCAGAGAGTGCAGCTCATCTGATTGAGGCCAGTAAAAGACGCGTCCATCTCGTCGTGCCGCCA
 GGTTCCGACAGTCCAGCCAGACATCTTTCAAGAAGCTGGCTGGATCAGCAATGGCCAGCAATCCCCAGGC
 CCAGGAGAGAGGAACACAGCTTCTAAGCCTGCAGCCACCTGTGATGAGAAGGTTGTAAGTGTCTGGAAAG
 ACCCCAGCGAGTCTCTCGGCATGACCGTCCGAGGGGGAGCATCCCACAGGGAATGGGACTTGCCCATCTA
 TGTGATCAGTGTGAACCCGGCGGAGTCAAGCAGAGACGGGAGAATAAAAACAGGTGACATTTTATTG
 AATGTGAATGGGATTGAGCTCACAGAGGTCAGCCGGACAGAGGCCGTTGCCATACTGAAGAGCGCACCT
 CCTCAGTGGTACTCAAAGCCTTGAAGTCAAGGAACAGGAGGCCAGGAAGACTGCAGCCAGCAGCCCT
 GGACTCCAACCACAACGTGACCCCGCTGGTACTGGTCCCCTCCTGGGTGATGTGGCTGGAATTACCA
 CAGTACTTATGTAAGTGTAAAGATGTGATACTGCGAAGGAACACAGCTGGAAGCCTGGGCTTCTGCATTG
 TGGGAGGTTATGAAGAATACAGTGGGAACAAACCTTTTTTTTATCAAGTCCATTGTTGAAGGAACACCTGC
 ATACAATGACGGAAGAATCAGATGTGGTACATTTCTCTCGCTGTCAACGGTAGAAGTACATCGGGTATG
 ATACACGCTTGCCTGGCCAGGATGCTCAAGGAACCTAAAGGGAGAATTACTCTGACCATTGCTTCTTGGC
 CTGGTACTTTTTTA

AG**CGGACCG**ACGCGTACGCGGCCGCTCGAG - GFP Tag - GTTTAA

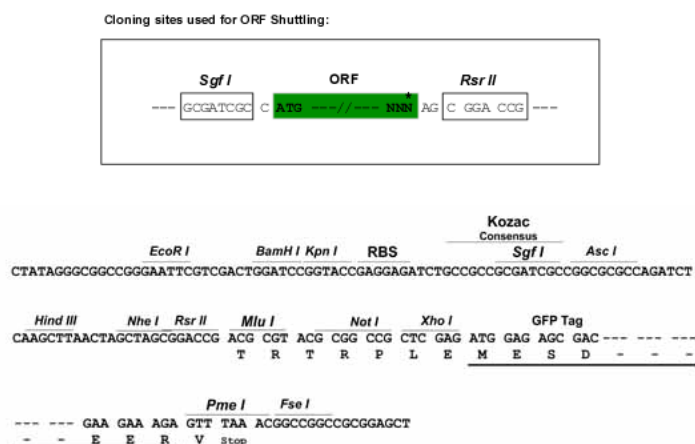
Protein Sequence: >MG219190 representing NM_001159577
Red=Cloning site Green=Tags(s)

```
MNQPDLDPPDPSPEPLCIVCGQNHSPEENHFYTYTEDVDDDLICHICLQALLDPLDTPCGHTYCTLCLT
NFLVEKDFCPVDRKPVVLQHCCKSSILVNKLLNKLLVTCPFTEHCTEVLQRCDLQHHFQTSCKGASHYGL
TKDRKRRSQDGCPCDGCASLMATTL SPEVSAATISLMTDEPGLDNPAYVSVSVEDEGEPVANSSDSGRSNRT
RARPFERSTMRSRSFKKINRALSALRRTKSGSVVANHVDQGRDNSENTTVPEVFPRLFHLIPDGEITSIK
INRADPSELSIRLVGGSETPLVHIIIQHIYRDGVIARDGRLLPGDIILKVNMGDISNVPHNYAVRLLRQ
PCQVLRRLTVLREQKFRSRNAHVPSYGPRDDSFHVILNKSSPEEQLGIKLVRRVDEPGVVFVNLNGGV
ADRHGQLEENDRVLAINGHDLRFGSPESAHLIQASERRVHLVVSQRVQSSPDIFQEAGWISNGQQSPG
PGERNTASKPAATCHEKVSVWKDPSESLGMTVGGGASHREWDLPIYVISVEPGGVI SRDGRIKTDGILL
NVNGIELTEVSRTEAVAILKSAPSSVVLKALEVKEQEAQEDCSPAALDSNHNVT PPGDWSPSWMMWLELP
QYLCNCKDVILRRNTAGSLGFCIVGGYEEYSGNKPFFIKSIVEGTPAYNDGRIRCGDILLAVNGRSTSGM
IHACLARMLKELKGRITLTIASWPGFTL
```

SGPTRRRLE - GFP Tag - V

Restriction Sites: SgfI-RsrII

Cloning Scheme:



ACCN: NM_001159577

ORF Size: 2184 bp

OTI Disclaimer: The molecular sequence of this clone aligns with the gene accession number as a point of reference only. However, individual transcript sequences of the same gene can differ through naturally occurring variations (e.g. polymorphisms), each with its own valid existence. This clone is substantially in agreement with the reference, but a complete review of all prevailing variants is recommended prior to use. [More info](#)

OTI Annotation: This clone was engineered to express the complete ORF with an expression tag. Expression varies depending on the nature of the gene.

Components: The ORF clone is ion-exchange column purified and shipped in a 2D barcoded Matrix tube containing 10ug of transfection-ready, dried plasmid DNA (reconstitute with 100 ul of water).

Reconstitution Method:

1. Centrifuge at 5,000xg for 5min.
2. Carefully open the tube and add 100ul of sterile water to dissolve the DNA.
3. Close the tube and incubate for 10 minutes at room temperature.
4. Briefly vortex the tube and then do a quick spin (less than 5000xg) to concentrate the liquid at the bottom.
5. Store the suspended plasmid at -20°C. The DNA is stable for at least one year from date of shipping when stored at -20°C.

RefSeq: [NM_001159577.1](#), [NP_001153049.1](#)

RefSeq Size: 2571 bp

RefSeq ORF: 2187 bp

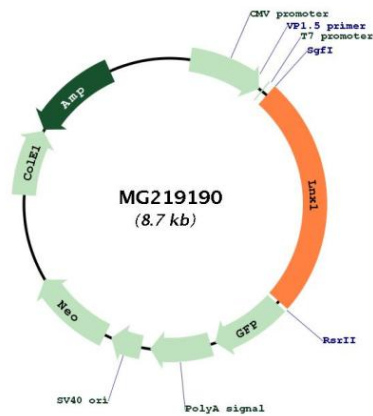
Locus ID: 16924

UniProt ID: [O70263](#)

Cytogenetics: 5 C3.3

Gene Summary: E3 ubiquitin-protein ligase that mediates ubiquitination and subsequent proteasomal degradation of NUMB. E3 ubiquitin ligases accept ubiquitin from an E2 ubiquitin-conjugating enzyme in the form of a thioester and then directly transfers the ubiquitin to targeted substrates. Mediates ubiquitination of isoform p66 and isoform p72 of NUMB, but not that of isoform p71 or isoform p65.[UniProtKB/Swiss-Prot Function]

Product images:



Circular map for MG219190