

Product datasheet for **MG219165**

Stx11 (NM_029075) Mouse Tagged ORF Clone

Product data:

Product Type: Expression Plasmids
Product Name: Stx11 (NM_029075) Mouse Tagged ORF Clone
Tag: TurboGFP
Symbol: Stx11
Synonyms: 5830405C08Rik
Mammalian Cell Selection: Neomycin
Vector: pCMV6-AC-GFP (PS100010)
E. coli Selection: Ampicillin (100 ug/mL)
ORF Nucleotide Sequence: >MG219165 representing NM_029075
Red=Cloning site Blue=ORF Green=Tags(s)

TTTTGTAATACGACTCACTATAGGGCGGCCGGAATTCGTCGACTGGATCCGGTACCGAGGAGATCTGCC
GCC**CGATCGCC**

ATGAAGGATCGGCTTGCAGAGCTTCAAGAATTGTCCAGGAGCTATGACCAGCAATCCCAGATGGGGACG
ATGACTTTGACGCTCCTCGGGAGGACATCGTGTTCGAGACCGACCACATCCTGGAGTCTTGTATAGGGT
CATCCAGGACATCCAGGATGAAAACCAGCTGCTTCTGATAGACGTGAGGCGCCTGGGGAGGCAGAACGTC
CGCTTCTCACGTCCATGCGGCGCCTCAGCAGCATTAAAGCGCGACACCAACTCCATCGCCAAGGCCATCA
AGACCCGAGGCGAAGGCATCCACCAGAAGCTGCGCTCCATGAAGGAGCTGAGCGAGCAGGCCGAGGCCCG
GCACGGCGCGCACTCGGGGGTGGCTCGCATCTCACACGCGCAGTACAGCGCGCTGGCCCGCGCTTTCCAG
CAAGCCATGTACGAGTACAACCAGGCCGAGATGAAACAGCGCGACAACCTGCAAGATCCGCATCCAGCGGC
AGCTGGAGATCATGGCAAGGACATGTCCGGCGAGCAGATTGAGGACATGTTTCGAGCAGGGCAAGTGGGA
TGATTCTCCGAGAACCTGCTGGCCGACTTGAAGGGCGCGGGCTGCGCTCAACGAGATCGAGAGCCGC
CACCGGAGCTCCTGCGCCTGGAGGGTTCGATTTCGCGATGTGCACGAGCTTCTTACAGATGGCCGTGC
TAGTGGAGAAGCAGGAGGACACGCTGAACGTATCGAGCTAACGTGCAGAAGACCCTCGATTACACGGG
CGAGGCCAAGGCGCAGGTGCGCAAGGCGGTGCAGTACAAGAAGAAGAACCCTGCAGGACCATCTGCTGC
TTCTGTTGTCCCTGTGTCAAC

ACGCGTACGCGGCCGCTCGAG - GFP Tag - GTTTAA



[View online »](#)

Protein Sequence: >MG219165 representing NM_029075
 Red=Cloning site Green=Tags(s)

MKDRLAELQELSRSDYDQFPDGGDDDFDAPREDIVFETDHIHLESLYRVIQDIQDENQLLLIDVRRLLGRQNV
 RFLTSMRRLSSIKRDTNSIAKAIKTRGEGIHQKLRSMKELSEQAEARHGHAHSAVARISHAQYSALARAFQ
 QAMYEYNQAEMKQRDNCKIRIQRQLEIMGKDMSGEQIEDMFEQGWDFSENLLADLKGARAALNEIESR
 HRELLRLEGRIRDVHELFLQMAVLVEKQEDTLNVIELNVQKTLDYTGAKAQVRKAVQYKKKNPCRTICC
 FCCPCVN

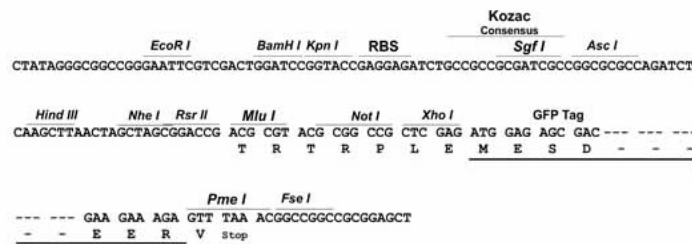
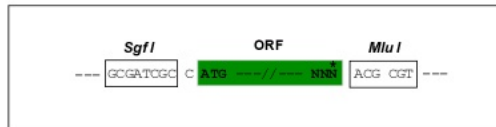
TRTRPLE - GFP Tag - V

Restriction Sites:

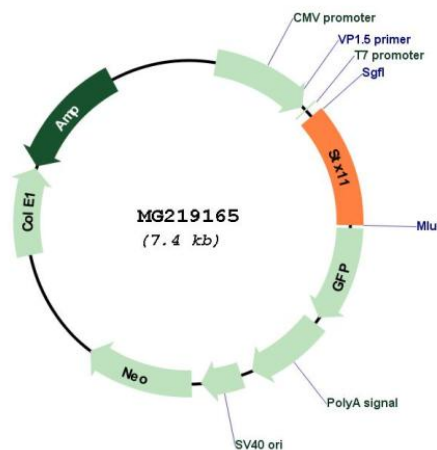
SgfI-MluI

Cloning Scheme:

Cloning sites used for ORF Shuttling:



Plasmid Map:



ACCN: NM_029075

ORF Size: 861 bp

OTI Disclaimer:	The molecular sequence of this clone aligns with the gene accession number as a point of reference only. However, individual transcript sequences of the same gene can differ through naturally occurring variations (e.g. polymorphisms), each with its own valid existence. This clone is substantially in agreement with the reference, but a complete review of all prevailing variants is recommended prior to use. More info
OTI Annotation:	This clone was engineered to express the complete ORF with an expression tag. Expression varies depending on the nature of the gene.
Components:	The ORF clone is ion-exchange column purified and shipped in a 2D barcoded Matrix tube containing 10ug of transfection-ready, dried plasmid DNA (reconstitute with 100 ul of water).
Reconstitution Method:	<ol style="list-style-type: none">1. Centrifuge at 5,000xg for 5min.2. Carefully open the tube and add 100ul of sterile water to dissolve the DNA.3. Close the tube and incubate for 10 minutes at room temperature.4. Briefly vortex the tube and then do a quick spin (less than 5000xg) to concentrate the liquid at the bottom.5. Store the suspended plasmid at -20°C. The DNA is stable for at least one year from date of shipping when stored at -20°C.
RefSeq:	NM_029075.1 , NP_083351.1
RefSeq Size:	2396 bp
RefSeq ORF:	864 bp
Locus ID:	74732
UniProt ID:	Q9D3G5
Cytogenetics:	10 A2
Gene Summary:	SNARE that acts to regulate protein transport between late endosomes and the trans-Golgi network.[UniProtKB/Swiss-Prot Function]