

## Product datasheet for **MG219161**

### Synj2 (NM\_001113351) Mouse Tagged ORF Clone

#### Product data:

Product Type:	Expression Plasmids
Product Name:	Synj2 (NM_001113351) Mouse Tagged ORF Clone
Tag:	TurboGFP
Symbol:	Synj2
Synonyms:	AI481647; mKIAA0348; SJ2
Mammalian Cell Selection:	Neomycin
Vector:	pCMV6-AC-GFP (PS100010)
E. coli Selection:	Ampicillin (100 ug/mL)
ORF Nucleotide Sequence:	>MG219161 representing NM_001113351 Red=Cloning site Blue=ORF Green=Tags(s)

TTTTGTAATACGACTCACTATAGGGCGGCCGGAATTCGTCGACTGGATCCGGTACCGAGGAGATCTGCC  
GCC**CGATCGCC**

ATGTCAGTGGGCAGAATTCAGATGCAGAGATCTACAAAATCACTGCCACTGAGTTGTACCCCTGCAGG  
AAGAGGCCAAGGAAGAGGACCGCTGCCACCTTAAAGAAAATCCTGAGCTCAGGGGTGTTCTATTTCCG  
ATGGCCAATGATGGCGCTGCTCGATCTGACCATCAGGGCTCAGAAACAGGGTATGACGGCTCTGAA  
TGGGGACCTCTTCTTCTGGAACAGCTATTGCATGTGCCTCTCGGCAGCACCAGGTGAAGTGCATA  
ACTGGTTGCTGAAAGTCACTGTGGGGTGTGACCATCCGCACAGTATATGCCTCCACAAGCAGGCCAA  
GGCTGTCTCATCTCTCGCATCAGCTGTGAACGGCAGGTGCTCGCTTCCACCCGTGGTGTGAACGAT  
GATGGCCACGTGTCCAATTTGTGGAGACAGAGCAGACGATTTACATGGATGATGGAGTATCGTCTTTG  
TCCAGATCCGAGGCTCCGTTCCGCTGTTCTGGGAGCAACCAGGACTTCAGGTTGGCTCCCATCATCTGAG  
ACTGCACAGAGGCTAGAGGCCAACGCTCTGCTTTTAAAGGCACATGGTGTCTTGAAGGAGCAATAC  
GGTAAGCAGGTGGTTGTGAACCTGCTGGGTAGCAGAGGGCGGTGAAGAGGTGCTCAACAGAGCCTTCAAGA  
AGTTGCTCTGGGCTTCTTGCCACGCGGGTGACACACCTATGATAAATTTGACTTCCATCAGTTTGCCAA  
AGGTAGGAAGCTAGAGAAATGGAGAACCTGTTGAGACCTCAGTTACAGCTACACTGGGAAGACTTCGGC  
GTGTTTGCGAAGGGCGAGAATGTAAGTCCACGGTTTCAGAAAGGCACTCTGCGGATGAAGTGTCTCGAT  
GTCTGGATAGAACCAACTGTGCAGTGCTTATTGCTCTTGAGTCTTCACTGCAGTTGAGAGCTT  
GGGGCTAAATTCAAAGCCATCATTGACCGTTTTGTGGAGTCTTCAAAGCCATGTGGTCTCTGAATGGG  
CACAGCTGAGCAAGGTGTTACAGGGAGCAGGGCCCTGGAAGGAAAGGCCAAGGTGGGAAAGCTGAAGG  
ATGGGGCCGATCCATGTCTCGACCATCCAGTCCAATCTTTCGACGGGTGAAGCAGGAGGCCATCAA  
GCTACTGTAGTCGGAGATGTCTACAATGAAGAGTCTACAGACAAAGGACGGATGCTGCTGGACAACAGC  
GCCCTTCTGGCGACCCCAAGGATCTTGAAGGCCATGACAGAACGCCAGTCGGAATTCACGAATTTCAAGC  
GCATCCAGATTGCTGTGGGGACCTGGAATGTGAACGGAGGAAAGCAATTCCTAGCAATCTCTGGGGAC  
GGCTGAGCTCACGGACTGCTCCTAGATGCTCCTCAGCTGTCAGGAGCAGTGGACTCCAGGATGATGGC



[View online >](#)

AGTCCTGCTGACGTATTTGCCATCGGGTTTGAGGAGATGGTGGAAGTGGTGCAGGAAATATTGTCAATG  
CCAGCACCACCAACAGGAAGATGTGGGGCAGCAGCTTCAGAAAGCCATCTCCCCTCCCATCGGTACAT  
CCTCTTGACCTCCGCACAGCTGGTGGGCGTCTGTCTTTACATCTTTGTACGTCCGTACCACGTCCCCTTC  
ATCAGAGACGTGGCCATCGACACCGTGAAGACCGGCATGGGGGAAAGCGGGGAATAAGGGTGTGTGG  
GCATCCGCTTCCAGCTCCACAGCACCAGTTTCTGCTTCGTCTGTAGCCACCTGACGGCTGGGCAGTCTCA  
GGTGAAGGAGAGGAATGAAGACTACCGGAGATCAGCACAAACTCTCCTCCCTTCGGGGAGAAACATA  
TTTTACATGATTACGTGTTTTGGTGTGGCGATTTCAACTACCGTATTGATCTTACTTACGAAGAAGTCT  
TCTATTTTGTAAACGCCAAGACTGGAAGAACTTATGGAATTCGATCAGTTACAGTTACAGAAATCAAG  
TGGAAAAATTTTTAAAGACTTTTCATGAAGGAGCCGTTAACTTCGGACCCACCTACAAGTATGACGTTGGA  
TCAGCTGCCTACGACACAAGTGACAAGTGCCGTACCCAGCCTGGACAGACAGGGTGTGTGGTGGAGGA  
AGAAGCATCCATATGATAAAACAGCTGGTGAACCTCACTAGACAGCGATCTAGACGGCGATCCCCA  
AATCAGACACACCTGGTCTCCAGGCACTCTGAAATACTACGGCCGTGCAGAGCTGCAGGCGTCTGATCAC  
AGACCTGTGTGGCCATTGTGGAGGTGGAGTTCAAGAGGTGGATGTAGGAGCCCGGAGAGGGTCTTCC  
AGGAAGTGTCTCTGTCCAAGGCCCGCTGGATGCCACCGTTGTTGTAACCTCCAGTCTCCAACCCTAGA  
AGAGAAAAATGAATTTCCAGAGGACCTGCGCACAGAACTTATGCAGACTTGGGGAATTATGGGACGATT  
ATTCTAGTCAGGATCAACCAAGGCAGATGCTGGTGCAGTTTGCAGACAGCCACTCGGCTCTCAGTGTGC  
TGGATGTGGATGGTATGAAGGTGAAAGGCAGGGCCGTGAAGATTCGACCAAGACCAAAGATTGGCTAGA  
AGGCCTGAGAGAGGAGCTTCTCCGGAAGCGAGACAGCATGGCCCTGTGTCTCCACCGCCAACTCCTGC  
TTGTTGGAGGAGAAGTTTACTTCTCGAGTCTGGACTATGAGTCCGAAGGGGATGTTCTTGAAGAGGATG  
AAGACTATTTAGTGGATGGGTTTGGCCAGCCTGTAGTCTCAGACAGTGCAGTCCGGTGGAGACAACCTTC  
CGACACCATGAGCTCCTTGACACCCGCCAGCAAGTCTCCCGCCCTGGCTAAAAAGAAGCAACATCCAACA  
TACAAAGCTGGCTTAATGGTGAAGAAGTCAGCCTCAGACGCGTCCATCTCTTCTGGCACTCATGGACAAT  
ATTCCATCTTGCAGACAGCGAAACTTCTCCAGGAGCACCCAGCAACCCCAAGGCTAGAACTGGAAT  
AAGTAAACCTTACAACGTCAAACAGATCAAACACCAACGCTCAGGAGGCAGAAGCAGCTATCCGGTGT  
CTCCTGGAAGCTAGCGGAGGGTCCCGGAATCAGCCCCAGGTGCCATACCCTGAGAAACCAAGGTCTT  
CTAAGCCAGAGGCCACCCTGGGGCCCCAGCCCTGCCCGCCGGCCTGCTCAAGGGTCCCACTATGAA  
GAAACCAACTTTGAGGAGGACAGGAAAGGTGACTCGGGCATCTCCAGTGTGCGTGAAGAGCTGCGC  
TCTGCTGCCTGCACCCACACGCAGTGTGACAGGACTGCGGAGACCTTAACAACAGATGGAGAATGC  
CACGTTTCTCGCACTATATTCACACAAAAAATGGAAGAAGTATCTCTCAGTTTCAAGATCTCTGGCT  
AAAGTTTCGCAGA

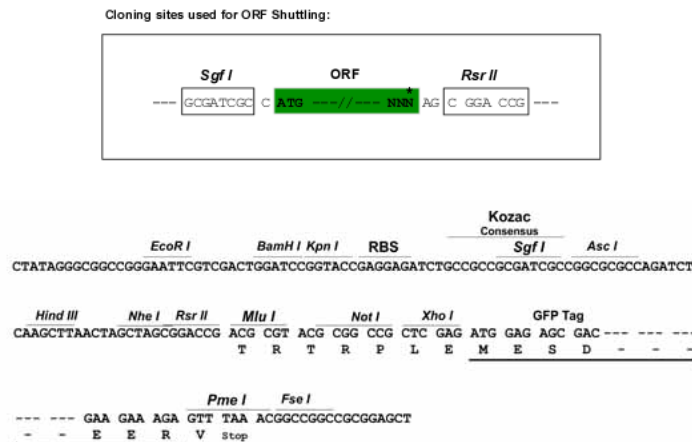
AGCGGACCGACGCGTACGCGGCCGCTCGAG – GFP Tag – GTTTAA

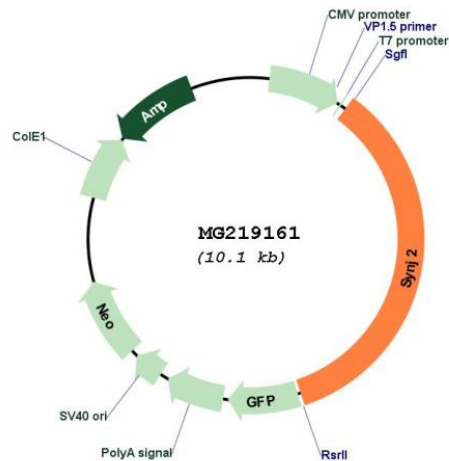
Protein Sequence: >MG219161 representing NM\_001113351  
 Red=Cloning site Green=Tags(s)

```
MSVGRIPDAEIIYKITATELYPLQEEAKEEDRLPTLKKILSSGVFYFAWPNDGACFDLTIRAQKQGGDDGSE
WGTSFFWNQLLHVPLRQHVNCHNWLLKVICGVVTIRTVYASHKQAKACLSRISCERAGARFLTRGVND
DGHVSNFVETEQTIIYMDGVSFFVQIRGSVPLFWEQPLQVGSHELLRLHRGLEANAPAFERHMVLLKEQY
GKQVYVNLGSRGGEVLNRAFKKLLWASCHAGDTPMNFDFHQFAKGRKLEKLENLLRPQLQHWEDFG
VFAGENVSPRFQKGTLRMNCLDCLDRNTVQCFIALEVLHLQLESLGLNSKPIIDRFVESFKAMWSLNG
HLSKVFTGSRALLEGKAKVGKLDGARSMSRTIQSNFFDGVKQEAIKLLLVGDVYNEESTDKGRMLLDNT
ALLATPRILKAMTERQSEFTNFKRIQIAVGTWVNVGGKQFRSNLLGTAELTDWLLDAPQLSGAVDSQDDG
SPADVFAIGFEEMVELSAGNIVNASTTNRKMWGEQLQKAI SRSHRYILL TSAQLVGVCLYIFVRPYHVPF
IRDVAIDTVKTMGGKAGNKGAVGIRFQLHSTSFVCSHLTAGQSQVKERNEDYREITHKLSFSPGRNI
FSDHYVFCGDFNYRIDLYEEVFYFVKRQDWKLMFEDQLQLKSSGKIFKDFHEGAVNFGPTYKYDVG
SAAAYDTSKCRTPAWTDRVLWWRKKHPYDKTAGELNLLDSDLGDGPQIRHTWSPGTLKYYGRAELQASDH
RPVLAIVEVEVQEVVDVGARERVFQEVSSVQGPLDATVVVNLQSPGLEEKNEFPEDLRTELMQTLGNYGTI
ILVRINQGMQLVTFADSHSALSVDVDGMKVKGRAVKIRPKTKDWLEGLREELLRKRDSMAPVSPTANSC
LLEENFDVSSLDYSEGDVLEEDDYLDVDFGQPVVSDSELGGDNSSDTMSSLTPASKSPALAKKQHPT
YKAGLMVKKSASDASISSGTHGQYSILQTKALLPGAPQQPPKARTGISKPYNVKQIKTTNAQEAEAAIRC
LLEASGGVPESAPGAIPLRNQGSKPEATLGPPALPRRPAVRVPTMKKPTLRRTGKVYSGISQCLREELR
SAACTPHAVSAQDCGDLNRRWRMPRF SHYIHTKKWKNVLSFQDLWLKFRF
```

SGPTRRRLE - GFP Tag - V

Restriction Sites: SgfI-RsrII  
 Cloning Scheme:



**Plasmid Map:**


**ACCN:** NM\_001113351

**ORF Size:** 3513 bp

**OTI Disclaimer:** The molecular sequence of this clone aligns with the gene accession number as a point of reference only. However, individual transcript sequences of the same gene can differ through naturally occurring variations (e.g. polymorphisms), each with its own valid existence. This clone is substantially in agreement with the reference, but a complete review of all prevailing variants is recommended prior to use. [More info](#)

**OTI Annotation:** This clone was engineered to express the complete ORF with an expression tag. Expression varies depending on the nature of the gene.

**Components:** The ORF clone is ion-exchange column purified and shipped in a 2D barcoded Matrix tube containing 10ug of transfection-ready, dried plasmid DNA (reconstitute with 100 ul of water).

**Reconstitution Method:**

1. Centrifuge at 5,000xg for 5min.
2. Carefully open the tube and add 100ul of sterile water to dissolve the DNA.
3. Close the tube and incubate for 10 minutes at room temperature.
4. Briefly vortex the tube and then do a quick spin (less than 5000xg) to concentrate the liquid at the bottom.
5. Store the suspended plasmid at -20°C. The DNA is stable for at least one year from date of shipping when stored at -20°C.

**RefSeq:** [NM\\_001113351.1](#), [NP\\_001106822.1](#)

**RefSeq Size:** 3992 bp

**RefSeq ORF:** 3516 bp

**Locus ID:** 20975

**UniProt ID:** [Q9D2G5](#)

**Cytogenetics:** 17 3.59 cM

**Gene Summary:**

Inositol 5-phosphatase which may be involved in distinct membrane trafficking and signal transduction pathways. May mediate the inhibitory effect of Rac1 on endocytosis (By similarity).[UniProtKB/Swiss-Prot Function]