

Product datasheet for **MG219153**

Ckap5 (NM_029437) Mouse Tagged ORF Clone

Product data:

Product Type:	Expression Plasmids
Product Name:	Ckap5 (NM_029437) Mouse Tagged ORF Clone
Tag:	TurboGFP
Symbol:	Ckap5
Synonyms:	3110043H24Rik; 4930432B04Rik; D730027C18Rik; mKIAA0097; T25636
Mammalian Cell Selection:	Neomycin
Vector:	pCMV6-AC-GFP (PS100010)
E. coli Selection:	Ampicillin (100 ug/mL)
ORF Nucleotide Sequence:	>MG219153 representing NM_029437 Red=Cloning site Blue=ORF Green=Tags(s)

TTTTGTAATACGACTCACTATAGGGCGGCCGGAATTCGTCGACTGGATCCGGTACCGAGGAGATCTGCC
GCC**CGATCGCC**

ATGGGAGATGACAGTGAGTGGTTGAAATTACCAGTTGATCAGAAATGTGAACACAAGCTATGGAAAGCAA
GATTAAGTGGGTATGAAGAAGCCTTGAAGATCTCCAGAAAATAAAGGATGAAAAGAGTCCAGAATGGTC
CAAATACTTAGGATTAATCAAAAAATTTGCTACTGATTCCAATGCAGTGGTTCAATTGAAAGGACTAGAA
GCTGCCTTGTCTATGTTGAAAATGCTCATGTTGCAGGAAAAACAACGGGAGAGGTTGTATCAGGTGTTG
TAAGTAAAGTCTCAACCAACCTAAAGCCAAGCAAGGAAGTGGGCATAGAGATTTGCCTCATGTATGT
TGAGATTGAAAAAGGAGAGTCTGTACAAGAAGAGCTTCTGAAGGGCTGGATAACAAGAACCCCAAGATC
ATAGTGGCCTGTATAGAAACACTGAGGAAAGCCTTAAGTGAATTTGGTTCCAAAATCATCTCACTTAAGC
CAATTATTAAGTGTGGCCAAAATTTGAATCTCGAGACAAGGCTGTTTCGGGATGAAGCCAAATTTATT
TGCTATAGAGATTTATCGATGGAATCGAGATGCTGTGAAACACACACTACAAAATATAAATCTGTCCAG
TTGAAAGAATTAGAAGAAGAGTGGGTCAAGTGCCAACAGGTGCTCCTAAGCCCAGTCCGTTTCTGCGTT
CCCAACAAGAAGTACAAGCTAACTGGAACAGCAACAGTCTGCTGGTGGAGATGCAGAAGGGGTGGTGA
TGATGGTGATGAGGTACCACAGGTAGATGCTTATGAGCTTCTGGATCCGGTAGAGATCCTTTCCAACTT
CCCAAAGACTTTTATGACAAAATTTGAGGCAAGAAAATGGCAAGAGAGAAAAGAAGCTCTGGAGGCTGTAG
AAGTACTAGTAAAAACCCCAAGCTGGAAGCAGGCGATTACGCAGATTTAGTAAAAGCATTAAAAAAGGT
TGTTGAAAGGACACCAATGTCTGTTGGTAGCTTTGGCAGCAAAATGTCTTACTGGCTTAGCTGTTGGG
CTCAGAAAAGAAATTTGGACAATATGAGGACATGTTGTGCCAACAAATTTGGAAAATTTCAAAGAAAAGA
AGCCTCAAGTGGTACAAGCCCTGCAGGAGGCAATTGATGCAATCTTCTCACTACCACACTACAGAACAT
CAGTGAGGATGTCTTAGCAGTAATGGATAATAAAAATCCCACCATCAAGCAGCAGACATCACTTTTTATT
GCAAGAAGCTTTTCGCTCACTGCCTTCTCTACATTGCCGAAGAGTCTACTAAAACCCTTTTGTGCTGCTC
TACTTAAGCACATCAATGATTCTGCTCCTGAAGTCAGAGATGCTGCATTTGAAGCACTGGGTACAGCTTT
GAAGGTGGTGGTGAAGAAATCAGTAAACCCATTTTAGCTGATGTTGACAACTCAAACCTGATAGGATC



[View online >](#)

AAAGAATGTTTCAGAAAAAGTAGAACTGGTTCATGGTAAAAAATCTGGACTTGCAACTGAAAAAGGAAT
 CCAAGCCTCTACCTGGAAGGGCTGCAGCATCAGGGGCTGCAGGGGACAAAGACACAAAAGATGTTTCAGG
 ACCCAAACCAGGACCGTTAAAAAAAACCTACTGCTAAGGCTGGTGGACCATCTAAGAAAAGTAAAAACA
 ACTGCACCAGGTGGCTCAGCAAGTGCCGGGACAAAAGAATAAGAAAAGGATTGGAGACCAAAGAAATAGTGG
 AGCCGAACTCTCAATTGAAGTATGTGAAGAGAAAAGCTTCAGCTGTTCTTCCCCAACCTGTATTCAGCT
 TCTAGACAGCAGCAACTGGAAGGAAAGGCTGGCCTGTATGGAAGAATCCAAAAGGCTGTTGAACTAATG
 GAGCGAACTGAGATGCCGTGCCAGGCATTGGTGAAGATGCTAGCAAAAAAACCTGGATGGAAAGAAACTA
 ATTTTCAGGTGATGCAGATGAAGCTTCACATTGTTGCTTTGATTGCCCAGAAGGGAAATTTTCTAAAAAC
 GTCTGCTCAGATTGTATTAGATGGCCTTGTAGACAAGATTGGAGATGTGAAATGTGGGAACAATGCAAAA
 GAAGCCATGACAGCAATAGCTGAAGCGTGCATGCTGCCCTGGACAGCTGAGCAGGTGATGTCAATGGCCT
 TCTCACAAAAGAATCCTAAGAATCAATCAGAACTCTAAATTGGCTATCAATGCAATAAAAAGATTG
 ATTTTCTGAGTTGAATGTCAAAGCTTTCATTAGCAACGTGAAGACTGCTCTTGTGCAACAAATCCTGCT
 GTGAGGACTTCTGCCATCACCTGCTTGGCGTGATGTATCTATATGTTGGTCCTTCTTTGAGAATGATCT
 TTGAGGATGAGAAGCCTGCCCTCTATCCCAGATAGATGCAGAATTTCAAAGATGCAGGGACAAAGTCC
 TCCCGCTCCAACGAGGGGAATTGCTAAGCACAGCACAAAGTGTACAGATGAAGGAGAAGATGGAGAGGAA
 CCAGGTGAAGGGGCAATGATGTTGTTGATCTTTTGCCGAGGATTGAGATCAGTGACAAAATTACTTCAG
 AGTTGGTGTCTAAGATTGGTGACAAGAATTGGAAGATCAGGAAAAGAGGCTAGATGAAGTGGCAGGTAT
 TATCAATGAAGCAAAAATTTATCCAACCAATATAGGTGAACCTCCAACCTGCCCTTGAAGGGTGCAGTGAAT
 GATTCAAACAAAAATCTTGGTGCAGCAGACACTGAATATCCTTCAGCAACTGGCAGTAGCCATGGGTGCAA
 ACATCAGGCAGCATGTAAAGAACCTGGGCATCCCTGTCATTACTGTTCTCGGAGATAGCAAGAACAATGT
 TCGAGCTGCTGCCCTAGCAACTGTGAATGCTTGGGCAGAACAACTGGCATGAAAGAATGGCTGGAGGGA
 GAAGATCTTTCTGAAGAACTTAAAAAGGAAAAATCCCTTCTGAGGCAAGAGCTTCTGGATGGCTGGCAG
 AGAAACTACCTACACTCCGTTCCACTCCTACAGATCTTATCCTTTGTGTTCTCATCTGTATTCCCTCT
 AGAAGATCGAAAATGGAGATGTACGGAAGAAGGCCAAGATGCTTTGCCATTCTTTATGATGCAATTTAGGA
 TATGAAAAAATGGCTAAGGCTACTGGGAAACTAAAGCCAACTTCTAAAGATCAAGTACTGGCCATGCTAG
 AAAAGGCCAAAGCTAACATGCCATCCAAGCCTGCTGCACCTGCTAAGGCCATGTCCAAACCAATGGGAGG
 GTCGGCTCCAGCCAAAACCCAGCCTATACCAGCACCTGTTGAAGATTCTGTTTCCAGTACCATAGAAGCT
 AAGCCTGATCTGAAAAAGGCTAAAGCTCCAGGCGTTTCTTCAAAGCAAAGAGTGTACAAGGGAAGAAAG
 TGCCAAGCAAACCACTTAAAGGAAGACGACGACAAAATCTGGTCCTATTTTTATTGTTGTTCCAAATGG
 AAAGGAGCAAAGGATGAGAGATGAGAAAGGATTAAGGTGCTAAAGTGAATTTTACTACCCACGGGAT
 GAGTACATTGAACAGCTGAAGACTCAGATGTCTACCTGTGTGGCTAAATGTTACAGGATGAAATGTTTC
 ACTCAGATTTCCAGCATACAATAAAGCCCTAGCTGTCATGGTTGATCACTTGAAAAGTGAAAAAGACGG
 TGTCAATCAGTTGCTTAGATCTTATCTTAAAAATGGCTTACCCTCCGGTTTTTTCGACACCAATACAAGCCT
 CTAATGAAAGCACTGGAATATTTAAAAATGCTTTTTACCCCTGCTGAGTGAGGAAGAGTATCATCTCACTG
 AGAATGAAGCATCGTCTTTATCCCCTATCTATCCTCAAGGTTGGAGAACCAAAGGATGTCATTCGTAA
 AGATGTCCTGCTATCCTGAACCGGATGTGCCTTGTCTACCCAGCCAGCAAAAATGTTCCCCTTATTATG
 GAAGGAACCAAGTCCAAAAACTTAAGCAGAGAGCAGAGTGCCTGGAAGAGCTAGGTTGCTTAATTGAGT
 CCTATGGTATGAATGTTGTGAGCAACCCAGGAAAAGCCTTAAAGGAGATAGCTATTCACATAGGAGA
 CCGAGACAATGCTGTACGGAATGCTGCCCTCAACACCATTGTAACAGTGTACAACGTGCATGGAGATCAG
 GTTTCAAACCTGATTGGAATCTTTCTGAGAAAAGACATGAGCATGCTTGAGGAGAGGATAAAGCGGTCAG
 CAAAGAGACCCTCTGCTGCACCTGTGAAACAGGCCGAAGAGAAAACCTCAGCGCACACAGAATATAAACTC
 TAATGCCAACATGCTACGCAAGGGACCAGCTGAGGATATGTCCTCAAACCTTAATCAAGCTCGAAGCCTG
 AGTGGGCATCCTGAAGCAGCCAGATGGTTCGCCGAGAATTCAGCTGGATTTAGATGAGATTGAAAATG
 ATAATGGTACAGTCCGCTGTGAAATGCCAGAGCTTGCCAGCACAACTTGATGACATTTTTGAACCTGT
 CCTATTCTGAACTAAGATCCGGGCTGTTTCTCCACATTTTGTGACATGCACAGTAATACAGCATCC
 ACAATCAATTTTATTATCTCCAAGTAGCCAGTGGTACATCAACACAAGCATCCAAGCTCTGACACAGA
 TTGATGAGGTCCTGAGGCAGGAAGACAAAGCTGAAGCTATGCTGGCCACATTGATCAGTTTCTGATAGC
 AACATTATGCAGCTAAGACTCATCTACAGCACACATGGCAGATGAGAAGTTGGACAAGGATGAAATC
 ATCAAGTTGTATAGCTGTATCATTGGCAACATGATTTTCGCTATTTTCAGATAGAGAGCTTGGCCCGGAGG
 CCTCCACTGGAGTACTGAAAGACCTGATGCATGGACTGATCACCTTAATGCTGGATTCTCGGATTGAAGA
 TCTGGAGGAAGGACAACAGGTGATTCTGTTCTGTGAACCTCTTGGTGGTGAAGTTTTGGAGAAATCAGAC
 CAGACCAATATCCTCAGTGCCCTGCTGTTTTACTTCAGGACAGCCTGCTAGCAACAGCTAGTTCTCCCA

AATTCTCAGAGCTTGTTATGAAGTGTCTATGGAGAATGTTTCGACTATTACCTGACACCATCAACAGCAT
 TAACCTAGACAGAATTCTTCTGGACATCCACATTTTCATGAAGGTCTTTCCCAAAGAGAAATTGAAGCAA
 TGCAAAGTGAATTTCTATAAGGACTCTAAGACCCCTTCTACATACTTTATGCAAATTAAGGACCTA
 AAATCCTAGACCACCTTACAATGATTGATAATAAGAATGAGTCAGAAATGGAGGCCACCTGTGTCGGAT
 GATGAAGCATAGTATGGACCAGACTGGGAGCAAGTCTGATAAGGAAACAGAAAAGGGAGCTTCTCGAATA
 GATGAAAAATCATCAAAGGCCAAAGTAAATGATTTCTTAGCTGAGATTTTAAAGAAGATTGGCTCCAAAG
 AGAACACTAAGGAGGGCCTAGCAGAGTTATATGAATATAAGAAGAAATATTCAGATACTGACATTGAACC
 ATTTCTGAAAAATTCCTCGAGTCTTTTCAGAGTTATGTTGAGAGAGGCCTTCGGGTGATTGAGATGGAG
 AGAGAAAGCAAAGGCCGATTCTACTTCAACAGGTAACACAAATGGAGAAGAAGTGGGGCCATCTGTCT
 ACTTGGAAAGGCTAAAAATCTGCGGCAGCGGTGTGGTCTTGACAACACAAAGCAAGATGACCGGCTCC
 ACTGACCTCTTTGCTCTCAAACCAGCAATTCCTCCAGTTGCCTCCTCCACAGACATGCTCCATAGCAAG
 CTCTCACAGCTCCGGGAGTCCCGGGAACAGCACCAGCACTCAGACCTGGATTCCAACCAGACCCACTCTG
 CAGGAACCATGACCTCCTCCTCCACAATAACATTGATGACTGAAAAAGAGACTGGAGAGAATAAA
 GAGCAGTCGCAA

ACGCGTACGCGGCCGCTCGAG - GFP Tag - GTTTAA

Protein Sequence:

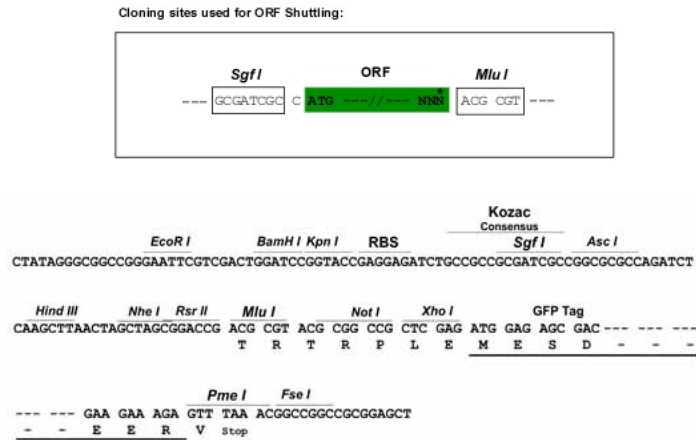
>MG219153 representing NM_029437
 Red=Cloning site Green=Tags(s)

MGDDSEWLKLPVDQKCEHLWKARLSGYEEALKIFQKIKDEKSPESKYLGLIKKFVTDNSNAVQVQLKGLE
 AALVYVENAHVAGKTTGEVSVGVSKVFNQPKAKAKELGIEICLMYVEIEKGESVQEELKGLDNKNPKI
 IVACIETLRKALSEFGSKIIISLKP I I K V L P K L F E S R D K A V R D E A K L F A I E I Y R W N R D A V K H T L Q N I N S V Q
 L K E L E E E W V K L P T G A P K P S R F L R S Q Q E L E A K L E Q Q S A G G D A E G G D D G E V P Q V D A Y E L L D A V E I L S K L
 P K D F Y D K I E A K K W Q E R K E A L E A V E V L V K N P K L E A G D Y A D L V K A L K K V V G K D T N V M L V A L A A K C L T G L A V G
 L R K K F G Q Y A G H V V P T I L E K F E K E K P Q V V Q A L Q E A I D A I F L T T T L Q N I S E D V L A V M D N K N P T I K Q Q T S L F I
 A R S F R H C T S S T L P K S L L K P F C A A L L K H I N D S A P E V R D A A F E A L G T A L K V V G E K S V N P F L A D V D K L K L D R I
 K E C S E K V E L V H G K K S G L A T E K K E S K P L P G R A A A S G A A G D K D T K D V S G P K P G L K K T P T A K A G G P S K K G K T
 T A P G G S A S A G T K N K K G L E T K E I V E P E L S I E V C E E K A S A V L P P T C I Q L L D S S N W K E R L A C M E E F Q K A V E L M
 E R T E M P C Q A L V K M L A K K P G W K E T N F Q V M Q M K L H I V A L I A Q K G N F S K T S A Q I V L D G L V D K I G D V K C G N N A K
 E A M T A I A E A C M L P W T A E Q V M S M A F S Q K N P K N Q S E T L N W L S N A I K E F G F S E L N V K A F I S N V K T A L A A T N P A
 V R T S A I T L L G V M Y L Y V G P S L R M I F E D E K P A L L S Q I D A E F Q M Q G Q S P P A P T R G I A K H S T S A T D E G E D G E E
 P G E G G N D V D L L P R I E I S D K I T S E L V S K I G D K N W K I R K E G L D E V A G I I N E A K F I Q P N I G E L P T A L K G R L N
 D S N K I L V Q Q T L N I L Q Q L A V A M G A N I R Q H V K N L G I P V I T V L G D S K N N V R A A A L A T V N A W A E Q T G M K E W L E G
 E D L S E L K K E N P F L R Q E L L G W L A E K L P T L R S T P T D L I L C V P H L Y S C L E D R N G D V R K K A Q D A L P F F M M H L G
 Y E K M A K A T G K L K P T S K D Q V L A M L E K A K A N M P S K P A A P A K A M S K P M G G S A P A K T Q P I P A P V E D S V S S T I E A
 K P D L K K A K A P G V S S K A K S V Q G K K V P S K T T L K E D D D K S G P I F I V V P N G K E Q R M R D E K G L K V L K W N F T T P R D
 E Y I E Q L K T Q M S T C V A K W L Q D E M F H S D F Q H H N K A L A V M V D H L E S E K D G V I S C L D L I L K W L T L R F F D T N T S V
 L M K A L E Y L K L L F T L L S E E Y H L T E N E A S S F I P Y L I L K V G E P K D V I R K D V R A I L N R M C L V P A S K M F P F I M
 E G T K S K N S Q R A E C L E E L G C L I E S Y G M N V C Q P T P G K A L K E I A I H I G D R D N A V R N A A L N T I V T V Y N V H G D Q
 V F K L I G N L S E K D M S M L E E R I K R S A K R P S A A P V K Q A E E K P Q R T Q N I N S N A N M L R K G P A E D M S S K L N Q A R S L
 S G H P E A A Q M V R R E F Q L D L D E I E N D N G T V R C E M P E L V Q H K L D D I F E P V L I P E P K I R A V S P H F D D M H S N T A S
 T I N F I I S Q V A S G D I N T S I Q A L T Q I D E V L R Q E D K A E A M S G H I D Q F L I A T F M Q L R L I Y S T H M A D E K L D K D E I
 I K L Y S C I I G N M I S L F Q I E S L A R E A S T G V L K D L M H G L I T L M L D S R I E D L E E G Q Q V I R S V N L L V V K V L E K S D
 Q T N I L S A L L V L L Q D S L L A T A S S P K F S E L V M K C L W R M F R L L P D T I N S I N L D R I L L D I H I F M K V F P K E K L K Q
 C K S E F P I R T L K T L L H T L C K L K G P K I L D H L T M I D N K N E S E L E A H L C R M M K H S M D Q T G S K S D K E F T E K G A S R I
 D E K S S K A K V N D F L A E I F K K I G S K E N T E G L A E L Y E Y K K K Y S D T D I E P F L K N S S Q F Q S Y V E R G L R V I E M E
 R E S K G R I P T S T G N T N G E E V G P S V Y L E R L K I L R Q R C G L D N T K Q D D R P P L T S L L S K P A I P P V A S S T D M L H S K
 L S Q L R E S R E Q H Q H S D L D S N Q T H S A G T M T S S S T T N I D D L K K R L E R I K S S R K

TRTRPLE - GFP Tag - V

Restriction Sites:

Sgfl-MluI

Cloning Scheme:


ACCN: NM_029437

ORF Size: 6033 bp

OTI Disclaimer: The molecular sequence of this clone aligns with the gene accession number as a point of reference only. However, individual transcript sequences of the same gene can differ through naturally occurring variations (e.g. polymorphisms), each with its own valid existence. This clone is substantially in agreement with the reference, but a complete review of all prevailing variants is recommended prior to use. [More info](#)

OTI Annotation: This clone was engineered to express the complete ORF with an expression tag. Expression varies depending on the nature of the gene.

Components: The ORF clone is ion-exchange column purified and shipped in a 2D barcoded Matrix tube containing 10ug of transfection-ready, dried plasmid DNA (reconstitute with 100 ul of water).

Reconstitution Method:

1. Centrifuge at 5,000xg for 5min.
2. Carefully open the tube and add 100ul of sterile water to dissolve the DNA.
3. Close the tube and incubate for 10 minutes at room temperature.
4. Briefly vortex the tube and then do a quick spin (less than 5000xg) to concentrate the liquid at the bottom.
5. Store the suspended plasmid at -20°C. The DNA is stable for at least one year from date of shipping when stored at -20°C.

RefSeq: [NM_029437.1](#)

RefSeq Size: 6521 bp

RefSeq ORF: 6036 bp

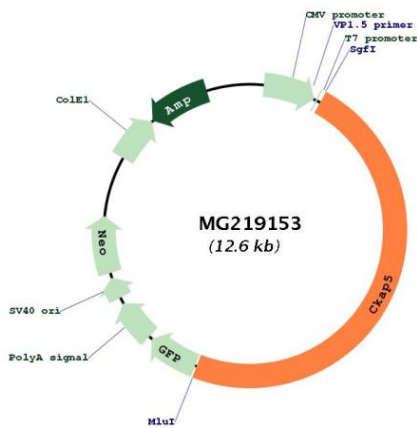
Locus ID: 75786

UniProt ID: [A2AGT5](#)

Cytogenetics: 2 E1

Gene Summary: Binds to the plus end of microtubules and regulates microtubule dynamics and microtubule organization. Acts as processive microtubule polymerase. Promotes cytoplasmic microtubule nucleation and elongation. Plays a major role in organizing spindle poles. In spindle formation protects kinetochore microtubules from depolymerization by KIF2C and has an essential role in centrosomal microtubule assembly independently of KIF2C activity. Contributes to centrosome integrity. Acts as component of the TACC3/ch-TOG/clathrin complex proposed to contribute to stabilization of kinetochore fibers of the mitotic spindle by acting as inter-microtubule bridge. The TACC3/ch-TOG/clathrin complex is required for the maintenance of kinetochore fiber tension. Enhances the strength of NDC80 complex-mediated kinetochore-tip microtubule attachments.[UniProtKB/Swiss-Prot Function]

Product images:



Circular map for MG219153