

Product datasheet for **MG219149**

Snx18 (NM_130796) Mouse Tagged ORF Clone

Product data:

Product Type:	Expression Plasmids
Product Name:	Snx18 (NM_130796) Mouse Tagged ORF Clone
Tag:	TurboGFP
Symbol:	Snx18
Synonyms:	Snag1
Mammalian Cell Selection:	Neomycin
Vector:	pCMV6-AC-GFP (PS100010)
E. coli Selection:	Ampicillin (100 ug/mL)



[View online »](#)

ORF Nucleotide Sequence:

>MG219149 representing NM_130796
 Red=Cloning site Blue=ORF Green=Tags(s)

TTTTGTAATACGACTCACTATAGGGCGGCCGGGAATTCGTCGACTGGATCCGGTACCGAGGAGATCTGCC
 GCC**CGGATCGCC**

ATGGCGCTGCGCGCCCGGGCGCTCTACGACTTTAAGTCCGAGAACCCCGGTGAGATCTCCCTGCGGGAGC
 ACGAGGTGCTGAGCCTGTGCAGCGAGCAGGACATCGAGGGCTGGCTCGAAGGGATCAACAGCCGCGGCGA
 CCGCGGCCTCTCCCGGCCTCTACGTGACGGTATCCGTGCGCCGAGCCTGGCCCTCCGGCCGACGGC
 GGCCCGGAGCTCCGGCCGCTACGCCAACGTGCCGCCGGCGGCTTCGAGCCTCTGCCCGCCGCGCCAC
 CCGCCGCTTCCCGCGCTGCTGCAGCCGAGGCGTACCCGGTTCCTCCAGCCCGGGCGCGGCTT
 TCCCTACGGCGGGGGCGCCCTGCAGCCGTCGCCACGACGCTCTACGGTGGATACCAGGCCAGCCTGGGC
 AGCGACGATGACTGGGACGACGAGTGGGACGACAGCTCCACGGTGGCCGATGAGCCAGGCGCGCTGGGA
 GCGGGCGTACCCGGACCTCGACGGCTCGTCGTCGGCGGGCGGGTTCGGCCGGCCGCTACCGCTGTC
 CACCCGCTCGGACCTGTCTCTGGGCTCCCGCGGCTCTCGGCGCCCCGGCGCACCAAGCGTCTGGAGCC
 AAGAGCTCGGCCACGGTGAAGCCCAACCTCAATCGCTTCTCCACCTTCGTCGAAGTCGGGCGGGGAGGCC
 TCGTGCTGGGAGAGGCGTCAGGCTTCGTGAAGGATGGGGACAAGCTGTGCGTGGTCTGGTCCCTACGG
 CCCCAGTGGCAGGAGAACCCTACCCCTTCCAGTGCACCATCGACGACCCACCAAGCAGACCAAGTTC
 AAGGGCATGAAGAGCTACATCTTTACAAGCTGGTGGCCACGCATACCCAGTGGCCGTCACAGGCGCT
 ATAAGCACTTCGATTGGCTGTATGCGCGCTGGCGGAGAAATCCAGTCATCTCGGTGCCCCATCTGCC
 TGAGAAGCAGGCCACCGGGCGCTTGAAGAGGACTTCACTCAAACGCAGGAAGGCTGATCTGGTGG
 ATGAACCACATGGCCAGCCACCCGGTCTGGCGCAGTGCAGCTTCCAGCATTCTGACCTGCCCA
 GCAGACTGATGAGAAGGCTGGAAACAGGTAAGCGGAAGGCTGAGAAGGATGAGATGGTGGGCGCCAA
 CTCTTCTCACTCTGACACCCACCTGCCCGCCGCTGGACCTGCAGGAGGTGGAGAGCAAGATAGAT
 GGCTTCAAATGCTTACCAAGAAGATGGACGACAGTGCCTTGCAGCTCAACCACACCGCCAACGAGTTT
 CGCGCAAGCAGGTGACTGGCTTCAAGAAGGAGTATCAGAAGTGGGCCAGTCTTCCGGGTCTCAGCCA
 AGCCTTTGAGCTGGATCAGCAGGCTTCTCCGTGGTCTGAATCAGGCCATTGCCCTTCACTGGAGACGCC
 TACGACGCCATCGGCGAACTTTCGCTGAGCAGCCAGGACGAGCTGGACCCAGTCATGGACCTGTTAG
 CACTGTATCAGGGCACCTGGCCAACTTCCAGACATCATCCATGTTCAGAAAGGAGCTCTTACCAAAGT
 AAAGGAGAGTAGGCGACACGTGGAAGAAGGAAGATGGAGGTCCAAAAGCTGACGGCATTCAAGACCGC
 TGTAACACTATTTCTTCCGACGTTGGCCGAGATTCACACTTCCATCAAATTAGAGTAAGAGACTTTA
 AATCACAGATGCAACATTTTTTACAACAACAAATAATATTTTTTCCAAAAGTGACCCAGAAGTTGGAAGA
 GCGCTTCAAAAATACGACAGCGTC

ACGCGTACGCGGCCGCTCGAG - GFP Tag - GTTTAA

Protein Sequence:

>MG219149 representing NM_130796
 Red=Cloning site Green=Tags(s)

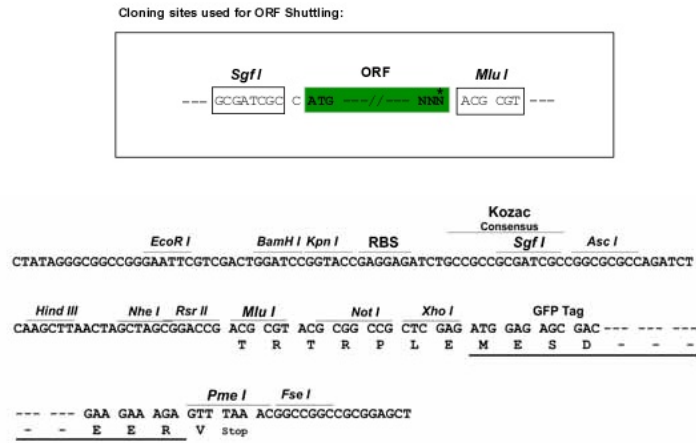
MALRARALYDFKSENPGEISLREHEVLSLCSEQDIEGWLEGINSRGRGLFPASYVQVIRAPEPGPPADG
 GPGAPARYANVPPGGFEPLPAAPPAAFPPLLQPQASPGSFQPPGAGFPYGGGALQPSQQLYGGYQASLG
 SDDDWDDEWDDSSSTVADEPGALGSGAYPDLGSSSAGGGAAGRYRLSTRSDLSLGSRGVSAPPAHQASGA
 KSSATVSRNLNRFSTFVKSGGEAFVLGEASGFVKDGDKLCVVLGPYPGWQENPYPFQCTIDDPTKQTKF
 KGMKSYISYKLVPTHTQVPVHRRYKHFHWLYARLAEKFPVISVPHLPEKQATGRFEEDFISKRRKGLIWW
 MNHMASHPVLAQCDVFQHFLTCPSSSTDEKAWKQGKRKAEKDEMVGANFFLTLSTPPAAALDLQEVEKID
 GFKCFTKMDDALQLNHTANEFARKQVTGFKKEYQKVGQSFRLSQAFELDQQAFSVGLNQAIAFTGDA
 YDAIGELFAEQPRQDLDPVMDLLALYQGHANFPDIHVKQKALTKVKESSRRHVEEGKMEVQKADGIQDR
 CNTISFATLAEIHHFHQIRVRDFKSMQHFLQQQIIFFQKVTQKLEELHKYDSV

TRTRPLE - GFP Tag - V

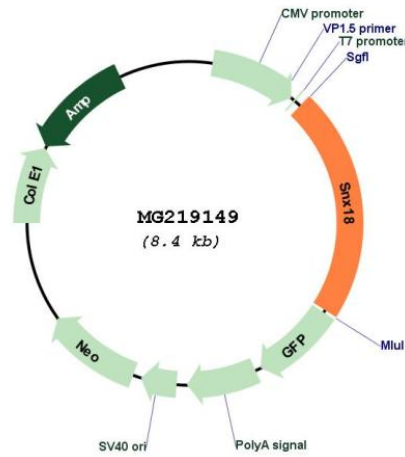
Restriction Sites:

Sgfl-MluI

Cloning Scheme:



Plasmid Map:



ACCN: NM_130796
 ORF Size: 1845 bp

OTI Disclaimer:	The molecular sequence of this clone aligns with the gene accession number as a point of reference only. However, individual transcript sequences of the same gene can differ through naturally occurring variations (e.g. polymorphisms), each with its own valid existence. This clone is substantially in agreement with the reference, but a complete review of all prevailing variants is recommended prior to use. More info
OTI Annotation:	This clone was engineered to express the complete ORF with an expression tag. Expression varies depending on the nature of the gene.
Components:	The ORF clone is ion-exchange column purified and shipped in a 2D barcoded Matrix tube containing 10ug of transfection-ready, dried plasmid DNA (reconstitute with 100 ul of water).
Reconstitution Method:	<ol style="list-style-type: none">1. Centrifuge at 5,000xg for 5min.2. Carefully open the tube and add 100ul of sterile water to dissolve the DNA.3. Close the tube and incubate for 10 minutes at room temperature.4. Briefly vortex the tube and then do a quick spin (less than 5000xg) to concentrate the liquid at the bottom.5. Store the suspended plasmid at -20°C. The DNA is stable for at least one year from date of shipping when stored at -20°C.
RefSeq:	NM_130796.4 , NP_570614.2
RefSeq Size:	4466 bp
RefSeq ORF:	1848 bp
Locus ID:	170625
Cytogenetics:	13 D2.2