

## Product datasheet for **MG219145**

### Ubap2l (NM\_001165986) Mouse Tagged ORF Clone

#### Product data:

Product Type:	Expression Plasmids
Product Name:	Ubap2l (NM_001165986) Mouse Tagged ORF Clone
Tag:	TurboGFP
Symbol:	Ubap2l
Synonyms:	3110083O19Rik; 4932431F02Rik; A430103N23Rik; C77168; mKIAA0144; Nice-4
Mammalian Cell Selection:	Neomycin
Vector:	pCMV6-AC-GFP (PS100010)
E. coli Selection:	Ampicillin (100 ug/mL)
ORF Nucleotide Sequence:	>MG219145 representing NM_001165986 Red=Cloning site Blue=ORF Green=Tags(s)

TTTTGTAATACGACTCACTATAGGGCGGCCGGGAATTCGTCGACTGGATCCGGTACCGAGGAGATCTGCC  
GCC**CGATCGCC**

ATGATGACGTCGGTGGGCACTAACCGAGCCCGGGGAACTGGGAACAACCTCAAACCAAACCAGACAC  
AGCACAAGCAGCGGCCACAGGCCACTGCAGAGCAAATTCGACTTGACAGATGATTTCCGACCATAATGA  
TGCTGACTTTGAGGAGAAGGTGAAACAATTGATTGATATCACAGGCAAAAACCAGGATGAATGTGTGATT  
GCTTTGCATGACTGCAATGGAGATGTCAACAGAGCCATCAATGTTCTCCTGGAAGGAAATCCAGACACGC  
ATTCCTGGGAGATGGTTGGGAAGAAGAAAGGAGTCTCAGGACAAAAGGATGGTGGACAACTGAATCTAA  
TGAAAGAAGGAAAAGAAAATCGAGACCGGGACAGAGACTATAGTCGCGCAGCTGGTGGGCCACCAAGACGG  
GGGAGAGGTGCCAGCCGTGGACGAGAGTGTATGCATGGGGCTTTATCAAACACAGCTGTGGTTCCGGGCC  
AGGAAAATGGATTGGATGGCACCAGAGTGGAGGGCCTTCTGGAAGAGGCACAGACAGAGGCAGAAGAGG  
CCGTGGCCGTGGCAGAGGTAGTTCTGGTAGGCGAGGAGGAAGTTTTCTGCTCAAGGAATGGGAACCTTT  
AACCCAGCTGATTATGCAGAGCCAGCCAACACTGATGATAACTATGGCAATAGCAGTGGCAATACATGGA  
ACAACACTGGCCACTTTGAACCAGATGATGGAACAAGACTTGATTTTCATTGGGGTTGAGGGTCAAATTA  
TCCCCGAAAATTTGAGACTGCTCCTGGTGCATGGAGGACTGCAACAGAAGAGTGGGAACCTGAAGACTGG  
AATGAAGATCTTTCTGAGACCAAGATCTTACCCTCTAATGTGTCTTCAGTGCCTCTGCCTGCGGAGA  
ATGTGACAATCACTGCTGGTCAGAGAATTGACCTTGCTGTTCTGTTGGGAAGACACCATCTTCAATGGA  
GAATGATTCATCTAATCTGGATCCATCTCAGGCTCCTTCCTGGCTCAGCCTCTGGTGTGTTAGTAATTCG  
AAGCAGAATGCCATATCACAGCTGCTTCAGGGAGTACATTTTCTCACCATAGCATGGTGGAGCATGTTGG  
GGAAAGGATTTGGTGTGTTGGGAAGCTAAAGGTGGCAGTACAACAGGCTCCCAGTTCTTGAGCAATT  
CAAGACTGCGCAGGCCCTTGCTCAACTGGCAGCTCAACATTCTCAATCTGGAAGCACTACCACCTCTCT  
TGGGATATGGGCTCAACAACACAATCACCATCACTGGTGCAGTATGATCTGAAGAGTCAAATGATTCAA  
CAGTGCACAGTCTTTTACAAGCGCCAGGCATTACCCCATCTTCAACCATGATGGAGGTATTCCTTCA  
GGAGAAGCCACCTGCAGTGGCTACCTCGACAGCTGCACCACCTCCCCGCTTCTCCTCTGCCAAGCAA



[View online >](#)

TCCACCTCGGCTCCACAGATGTCTCCGGGGTCTTCAGACAACCAGTCTCCAGCCCTCAGCCGGCTCAGC  
 AGAAACTGAAACAGCAAAAGAAGAAAACCTCCTTGACGTCTAAGATTCTGCTCTGGCTGTGGAGATGCC  
 TGGCTCAGCAGATATCTCAGGGCTAAATCTACAGTTTGGGGCATTGCAGTTTGGGTGAGAGCCTGTCTT  
 TCTGATTATGAGTCCACCCACCACGAGCGCCTCTCAAGCCAGGCTCCTAGTAGCCTGTATACCAGCA  
 CGGCCAGTGAGTCTTCACTACAGTTTCATCTAATCAGAGTCAGGAGTCTGGTTATCAGAGTGGCCCGAT  
 TCAGTCGACAACCTATACCTCCAAAAAATGCTCAGGGCCCTCTATATGAACAGAGATCCACACAGAGC  
 CGGCGGTATCCCAGCTCCATCTCTTTCATCACCCCAAAGGACCTGACTCAGGCTAAGAATGGTTTTAGT  
 CTGTGCAGGCCACGCAGTTACAGACCACGCAATCTGTTGAAGGTGCTACAGGCTCTGCAGTGAAATCTGA  
 ATCACCTTCCACTTCTAGTATACCTCTCTCAATGAAACAGTACCTGCAGCTTCTTACTGACGACAGCC  
 AATCAGCATTTCCTCCTTAAGTGGCTTGAGCCATACGGAGGAGATTCCAAATACCACCACCACACAAC  
 ATAGCAGTGCATTATCTACACAGCAGAATACCCTTTCTTCAACATCTTCTGGGCGTACTTCAACATC  
 CACTCTTTTGCATACAAGTGTGGAGAGTGGGCAAACTACATTCTTCTCCAGCACCTTCTTACCACA  
 TCCAGCACTGTCTCTGCACCTCCCCAGTGGTCACTGTCTCTCCAGTCTGAATAGTGGCAGTAGTCTGG  
 GCCTTAGCCTGGCAGCAACTCTACTGTACAGCCTCAACTCGAAGCTCAGTTGCTACAACCTCAGGAAA  
 AGCTCCTCCCAACCTTCTCCTGGAGTCCCGCCATTGTTGCTAATCCATATATTATGGCTCCGGGGCTG  
 TTACATGCCTATCCGCCACAAGTATATGGTTATGATGATTACAGATGCTCCAGACAAGATTTCCATTGG  
 ATTACTACAGTATCCCGTTTCCACACCACCCTCCACTTACTGGGAGGGATGGTAGCCTGGCCAGCAA  
 CCCTTACTCTGGCGACCTCACCAAATTCGGCCGCGGGGATGCCTCCTCCCAGCCCCAGCCACAACCTTG  
 GCCCAACCCCAACAGAACCAGACGCAGACTCACCAACCACGCAGCAGACATTCTGAACCCGGCGCTGC  
 CTCCTGGCTATAGTTACACCAGCCTGCCATACTACACAGGGGTCCCGGGCTCCCAGCACCTTCCAGTA  
 TGGGCTGCTGTGTTCCCTGTGGCTCTACCTCTTCCAAGCAGCATGGTGTGAATGTGAGTGTGAATGCC  
 TCGGCTACCCCTTCCAACAGCCAAGTGGATATGGGTCTCATGGATAACAACACTGGAAGAAAATATCCAC  
 CCCCTTACAAGCATTCTGGACGGCTGAGAGC

ACGCGTACGCGGCCGCTCGAG - GFP Tag - GTTTAA

**Protein Sequence:**

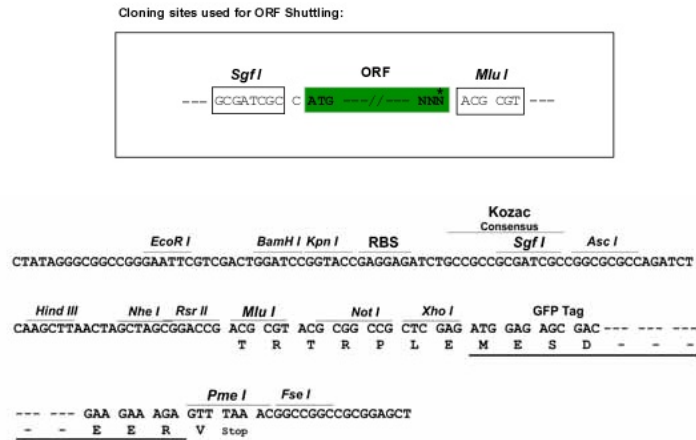
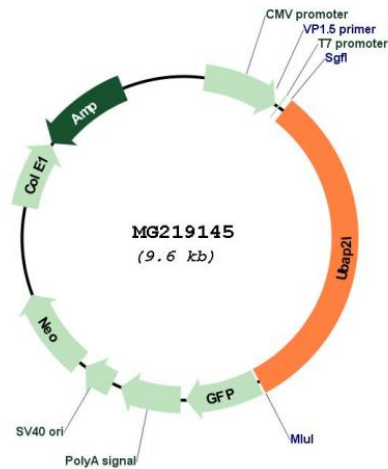
>MG219145 representing NM\_001165986  
 Red=Cloning site Green=Tags(s)

MMTSVGTNRARGNWEQPQNQNTQHKQRPQATAEQIRLAQMI SDHNDADFEEKVKQLIDITGKNQDECVI  
 ALHDCNGDYNRAINVLLLEGNPDTHSWEMVGGKKGVSQKDGQTESNEEGKENRDRDRDYSRRRGPPRR  
 GRGASRGRECMHGALSKPAVVRGQENGLDGTKSGPSGRGTDGRRRRGRGRGSSGRRGRFSAQMGTF  
 NPADYAEPAANTDDNYGNSSGNTWNNTGHFEPDDGTRLDFIGVEGSNYPRKFETAPGAWRTATEEWGTEDW  
 NEDLSETKIFTASNVSPLPAENVITAGQRIDLAVLLGKTPSSMENDSSNLDPSQAPSLAQPLVFSNS  
 KQNAISQPASGSTFSHSMVSMGKGFVDVGEAKGGSTTGSQFLEQFKTAQALAAQHSQSGSTTTSS  
 WDMGTTQSPSLVQYDLKSANDSTVHSPFTKRQAFTPSSMMMEVFLQEKPPAVATSTAAPPPSSPLPSK  
 STSAPQMSPGSSDNQSSSPQAQKQKQKKTSLTSKIPALAVEMPGSADISGLNLQFGALQFGSEPLV  
 SDYESTPTTSASSSQAPSSLYTSTASESSSTVSSNQSQESGYQSGPIQSTTYTSQNNAQGPLYEQRSTQT  
 RRYPSSISSSPQKDLTQAKNGFSSVQATQLQTTQSVEGATGSAVKSESPSTSSIPSLNETVPAASLLTTA  
 NQHSSSLSGLSHTEEIPNTTTTQHSSALSTQQNTLSSSTSSGRTSTSTLLHTSVSEANLHSSSSTFSTT  
 SSTVSAPPVVSVSSSLNSGSSLGLSLGSNSTVASTRSSVATTSGKAPPNLPVGPVPLLPNYPYIMAPGL  
 LHAYPPQVYGYDDLQMLQTRFPLDYYSIPFPTPTTPLTGRDGLASNPYSGDLTKFGRGDASSPAPATTL  
 AQPQQNQTHHTTQTFLNALPPGYSYSLPYTGVPLPSTFYGPVAVFPVAPTSSKQHGTVNSVNA  
 SATPFQQPSGYGSHGYNTGRKYPPPYKHFWTAES

TRTRPLE - GFP Tag - V

**Restriction Sites:**

Sgfl-MluI

**Cloning Scheme:**

**Plasmid Map:**


**ACCN:** NM\_001165986

**ORF Size:** 3042 bp

**OTI Disclaimer:** The molecular sequence of this clone aligns with the gene accession number as a point of reference only. However, individual transcript sequences of the same gene can differ through naturally occurring variations (e.g. polymorphisms), each with its own valid existence. This clone is substantially in agreement with the reference, but a complete review of all prevailing variants is recommended prior to use. [More info](#)

<b>OTI Annotation:</b>	This clone was engineered to express the complete ORF with an expression tag. Expression varies depending on the nature of the gene.
<b>Components:</b>	The ORF clone is ion-exchange column purified and shipped in a 2D barcoded Matrix tube containing 10ug of transfection-ready, dried plasmid DNA (reconstitute with 100 ul of water).
<b>Reconstitution Method:</b>	<ol style="list-style-type: none"><li>1. Centrifuge at 5,000xg for 5min.</li><li>2. Carefully open the tube and add 100ul of sterile water to dissolve the DNA.</li><li>3. Close the tube and incubate for 10 minutes at room temperature.</li><li>4. Briefly vortex the tube and then do a quick spin (less than 5000xg) to concentrate the liquid at the bottom.</li><li>5. Store the suspended plasmid at -20°C. The DNA is stable for at least one year from date of shipping when stored at -20°C.</li></ol>
<b>RefSeq:</b>	<u><a href="#">NM_001165986.1</a></u> , <u><a href="#">NP_001159458.1</a></u>
<b>RefSeq Size:</b>	3720 bp
<b>RefSeq ORF:</b>	3045 bp
<b>Locus ID:</b>	74383
<b>UniProt ID:</b>	<u><a href="#">Q80X50</a></u>
<b>Cytogenetics:</b>	3
<b>Gene Summary:</b>	Plays an important role in the activity of long-term repopulating hematopoietic stem cells (LT-HSCs) (PubMed:25185265).[UniProtKB/Swiss-Prot Function]