

## Product datasheet for **MG219132**

### **Pomgnt1 (NM\_029786) Mouse Tagged ORF Clone**

#### **Product data:**

Product Type:	Expression Plasmids
Product Name:	Pomgnt1 (NM_029786) Mouse Tagged ORF Clone
Tag:	TurboGFP
Symbol:	Pomgnt1
Synonyms:	0610016I07Rik; 4930467B06Rik
Mammalian Cell Selection:	Neomycin
Vector:	pCMV6-AC-GFP (PS100010)
E. coli Selection:	Ampicillin (100 ug/mL)



[View online »](#)

**ORF Nucleotide Sequence:**

>MG219132 representing NM\_029786  
 Red=Cloning site Blue=ORF Green=Tags(s)

TTTTGTAATACGACTCACTATAGGGCGGCCGGGAATTCGTCGACTGGATCCGGTACCGAGGAGATCTGCC  
 GCC**CGCATCGCC**

ATGGATGACTGGAAGCCAGTCCCCTCATCAAGCCCTTTGGGGCTAGGAAGAAACGGAGCTGGTACCTTA  
 CCTGGAAGTATAAACTGACAAACCAGCGGGCCCTGAGGAGATTCTGTGACACAGGGGCTGTGCTTTTCCT  
 GCTGGTACCCTCATTGTCAACATCAAGTTGATCCTGGACACTCGGAGAGCAATCAGCGAGGCCAATGAA  
 GACCCAGAACCAGAGCAAGACTATGATGAGGCCCTAGGACGTCTGGAGTCCCCTCGGCGCAGAGGCAGCA  
 GTCCCCGACGGGTGCTGGATGTGGAAGTACTCCAGTAGAAGCAAAGTGTATGTGGCTGTGGATGGCAC  
 CACGGTGTCTGAGGATGAAGCCCGGGAGCAGGGCCGAGGCATCCATGTCATAGTCTCAACCAGGCCACG  
 GGCCACGTGATGGCAAAGCGCGTGTGGACACATACTCTCCTCATGAGGATGAGGCCATGGTGTCTTCC  
 TCAACATGGTGGCCCCCGCCGCTGCTGATCTGCACGGTGAAGGATGAGGGTTCCTTCCACCTCAAGGA  
 CACAGCAAAGGCTCTGCTGAGGAGCCTGGGAAGTCAGGCAGGCCCTGCCCTTGGCTGGAGGGACACCTGG  
 GCCTTCGTGGGACGAAAAGGAGAGGCTGAGTGTCACTGGGACGATACGGAGTTGAACCGCCCGCCGAGGC  
 GCTTCTGCAGCAAAGTGGAGGGCTACGGGAGCGTGTGCAGCTGCAAGGACCCGACGCCTATTGAGTTCAG  
 CCCTGACCCACTTCCAGACAATAAGTCCCTCAATGTGCCTGTGGCTGTCAATTGCAGGGAACCGGCCAAT  
 TACCTGTACAGGATGCTGCGCTCTCTGCTCAGCCCAAGGGGTATCTCCACAGATGATAACGGTCTTCA  
 TTGATGGTACTATGAGGAGCCAATGGATGTGGTGGCGCTGTTGGTCTGAGAGGCATCCAGCATACTCC  
 TATCAGCATCAAGAACGCCCGTGTGTCTCAGCACTACAAGGCCAGCCTCACTGCCACTTCAACCTGTTT  
 CCGGAGGCCAAGTTTGTGTGGTCTGGAAGAGGACCTGGACATTGCCGTGGATTTTTTCAGTTTCTGA  
 GCCAGTCCATCCACCTGCTGGAGGAAGATGACAGCCTGTACTGCATCTCTGCCTGGAATGACCAGGGGTA  
 TGAACACACAGCTGAGGATCCAGCACTACTGTACCGTGTGGAGACCATGCCTGGGCTAGGATGGGTGCTC  
 AGGAAATCTTTATACAAGGAGGAGCTTGTAGCCCAAGTGGCCACACCAGAAAAGCTGTGGGATTGGGACA  
 TGTGGATGCGGATGCCGGAACAGCGCCGGGGCCGAGAGTATCATCCCGGATGTTTCCCGATCCTACCA  
 CTTTGGCATCGTCGGCTCAACATGAACGGCTACTTTCATGAGGCCTACTTCAAGAAGCACAAGTTCAAC  
 ACAGTTCCAGGTGTCCAGCTCAGGAATGTAGACAGTCTGAAGAAAGAAGCTTATGAAGTGGAAATTCACA  
 GACTGCTCAGTGAGGCCGAGGTTTTGGACCACAGCAAGGACCCTTGTGAAGACTCCTTCTGCCAGACAC  
 GGAGGGCCACACCTATGTGGCGTTTATCCGAATGGAGACAGATGATGACTTCGCCACCTGGACTCAGCTT  
 GCCAAGTGCCTCCATTTTGGGACTGGATGTTCTGTGGCAACCACGGGGCTGTGGAGATTATTTCCGA  
 AGAAGAACCACCTTTTGGTGGTGGGGTCCCAGCCTCCCCTTACTCAGTGAAGAAGCCACCATCAGTCAC  
 CCCTATTTTCTGGAGCCACCCCAAAGGAAGAAGGAGCCCAAGGGGCTGCTGAACAAACG

**ACGCGTACGCGGCCGCTCGAG** – GFP Tag – GTTTAA

**Protein Sequence:**

>MG219132 representing NM\_029786  
 Red=Cloning site Green=Tags(s)

MDDWKPSPLIKPFGARKKRSWYLTWKYKLTNQALRRFCQTGAVLFLLVTVIVNIKLILDTRRAISEANE  
 DPEPEQDYDEALGRLESPRRRGSSPRRVL DVEVYSSRSKYVYVAVDGTTVLEDEAREQGRGIHVILNQAT  
 GHVMAKRVFDTYSPHEDEAMVFLNMVAPGRVLICTVKDEGSFHLKDTAKALLRSLGSQAGPALGWRDWT  
 AFVGRKGEAECHWADTELNRRRRRRCCKVEGYGVSCKDPTPIEFSPDPLPDNKVLNVPVAVIAGNRPN  
 YLYRMLRSLLSAQGVSPQMITVFDGYYEEMDVALFGLRGIQHTPISIKNARVSQHYKASLTATFNLF  
 PEAKFAVVEEDLDIAVDFFSFLSQSIHLLLEEDSLYCSAWNDQGYEHTAEDPALLYRVETMPGLGWVL  
 RKSLYKEELEPKWPTPEKLWDWDMWMMRPEQRRGRECIIPDVSRSYHFGIVGLNMNGYFHEAYFKKHKFN  
 TVPGVQLRNVDLKEAYEVEIHRLLSEAEVLDHSDPCEDSFLPDTEGHTYVAFIRMETDDDFATWTQL  
 AKCLHIWDL DVRGNHRGLWRLFRKKNHFLVVGVPASPYSVKKPPSVTPIFLEPPPKEEGAPGAAEQT

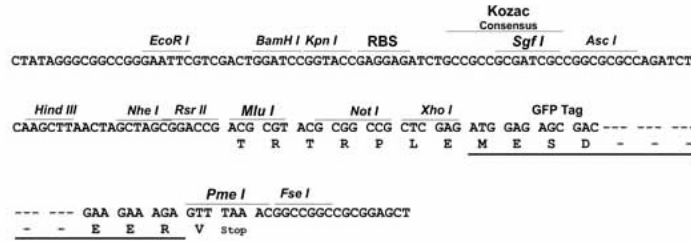
**TRTRPLE** – GFP Tag – V

**Restriction Sites:**

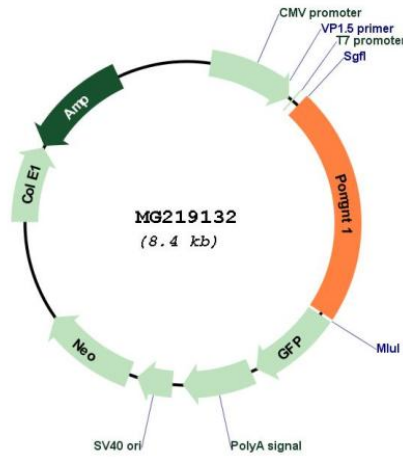
SgfI-MluI

Cloning Scheme:

Cloning sites used for ORF Shutting:



Plasmid Map:



ACCN: NM\_029786  
 ORF Size: 1881 bp

<b>OTI Disclaimer:</b>	The molecular sequence of this clone aligns with the gene accession number as a point of reference only. However, individual transcript sequences of the same gene can differ through naturally occurring variations (e.g. polymorphisms), each with its own valid existence. This clone is substantially in agreement with the reference, but a complete review of all prevailing variants is recommended prior to use. <a href="#">More info</a>
<b>OTI Annotation:</b>	This clone was engineered to express the complete ORF with an expression tag. Expression varies depending on the nature of the gene.
<b>Components:</b>	The ORF clone is ion-exchange column purified and shipped in a 2D barcoded Matrix tube containing 10ug of transfection-ready, dried plasmid DNA (reconstitute with 100 ul of water).
<b>Reconstitution Method:</b>	<ol style="list-style-type: none"><li>1. Centrifuge at 5,000xg for 5min.</li><li>2. Carefully open the tube and add 100ul of sterile water to dissolve the DNA.</li><li>3. Close the tube and incubate for 10 minutes at room temperature.</li><li>4. Briefly vortex the tube and then do a quick spin (less than 5000xg) to concentrate the liquid at the bottom.</li><li>5. Store the suspended plasmid at -20°C. The DNA is stable for at least one year from date of shipping when stored at -20°C.</li></ol>
<b>RefSeq:</b>	<a href="#">NM_029786.2</a> , <a href="#">NP_084062.2</a>
<b>RefSeq Size:</b>	2637 bp
<b>RefSeq ORF:</b>	1884 bp
<b>Locus ID:</b>	68273
<b>UniProt ID:</b>	<a href="#">Q91X88</a>
<b>Cytogenetics:</b>	4 D1
<b>Gene Summary:</b>	Participates in O-mannosyl glycosylation by catalyzing the addition of N-acetylglucosamine to O-linked mannose on glycoproteins. Catalyzes the synthesis of the GlcNAc(beta1-2)Man(alpha1-)O-Ser/Thr moiety on alpha-dystroglycan and other O-mannosylated proteins, providing the necessary basis for the addition of further carbohydrate moieties. Is specific for alpha linked terminal mannose.[UniProtKB/Swiss-Prot Function]