

Product datasheet for **MG219080**

Mrps27 (NM_173757) Mouse Tagged ORF Clone

Product data:

Product Type: Expression Plasmids
Product Name: Mrps27 (NM_173757) Mouse Tagged ORF Clone
Tag: TurboGFP
Symbol: Mrps27
Synonyms: 2610028H14Rik
Mammalian Cell Selection: Neomycin
Vector: pCMV6-AC-GFP (PS100010)
E. coli Selection: Ampicillin (100 ug/mL)
ORF Nucleotide Sequence: >MG219080 representing NM_173757
 Red=Cloning site Blue=ORF Green=Tags(s)

TTTTGTAATACGACTCACTATAGGGCGGCCGGAATTCGTCGACTGGATCCGGTACCGAGGAGATCTGCC
 GCC**CGATCGCC**

ATGGCGGCTCCCATGGTGC GGTTGGGATGCTCCTGGCTCGGCGACTAGACGCGTCTCGCCTTTGCCTCG
 CAGGTAAGATGCCTGCTTTCTGCAGCGTACGTGGACAGCCACCAGTGGGAAGCCAGAGAGAAGGAGGA
 ATACCATCTGGCTGATCTTGCATCCTTAATGGACAAAGCGTATGAAAGAAAATTGCCTGTTAGTCTTTA
 TCAATATCACGGTTTGTGGACAACATTGCATCCCGAGAAGATCTAGATTCTGCAGAGTACTATCTTTACA
 AATTTTCGACACAGTCCCAACTGCTGGTACCTAAGAGACTGGACCATCCACAGCTGGATTAGACAGTGTCT
 GAAATACGGAGCACAAGACAAAGCCTTGTATACACTTGTAAATAAGGTTTCAGTATGGAATTTTCCAGAT
 AACTTTACATTCAACTTACTGATGGATTATTTCAAAAGAAAGGAAATTACAAAGATGCTTTATCCGTGG
 TTTTTGAGATCATGATGCAAGAAGCCTTTGACGTGCCGTCCACCCAGTTTCTCTCCCTCTATGTTTTATA
 CCGTTGCCTAGCAGAGAAGACGGAGCTCACATGGGAAGAAGAAAGAGACTTTGGGGCGTCCCTCTTGCTT
 TCTGGCCTGAAACAAAGGAACACAGTGGGCTGAGTCCAGCTGTATGGCTATGCATTTCTCGGAAGG
 TGGAACTGCAGCGTGGGTGCGGGCTGTATACCACGGCATGCCTCTGATGTGGACACCAGGCTACCTCGA
 CAGAGCCCTCAAAGTGTGGAGAGGGTGGCCTCCTCCCCTGAAGACCTCAAGCTGGGTAGAGAAGTGCTC
 GATGTGCTGGATGGAGTCTGAAGTGGTGGTGGTGGTGGTGGTGGTGGTGGTGGTGGTGGTGGTGGTGGT
 AAGGTGAAGATGGCTTGGGCTCAGCAAACCTGGTGGAGCAGCTAGACACTGAGGAACCAGAACAGTCCAA
 GCTTCCCAGTACCTCGAGCGCTTTTCAGGCCTCTCGGTCTAAACTGCAGGAGCTGAACAGAGTTGAGTCT
 GAAAGTCTTTGACTCTGACCACCCAGCTTGTAAAGAAAAACTCCCGCCTGTGAGGCCAGGACCTGG
 CCACCTACGAGCAGAAACTCCGTGAGTGGCACCTGGAGCGGGTGCAGTTGATCCAGAGGGAGCAGGAACA
 GAGGGAGAAGGCCAAGCAAGGTACCAGGCGCTGAGTGCAGGAGAAAGCAGCC

AGCGGACCGACGCGTACGCGGCCGCTCGAG - GFP Tag - GTTTAA



[View online »](#)

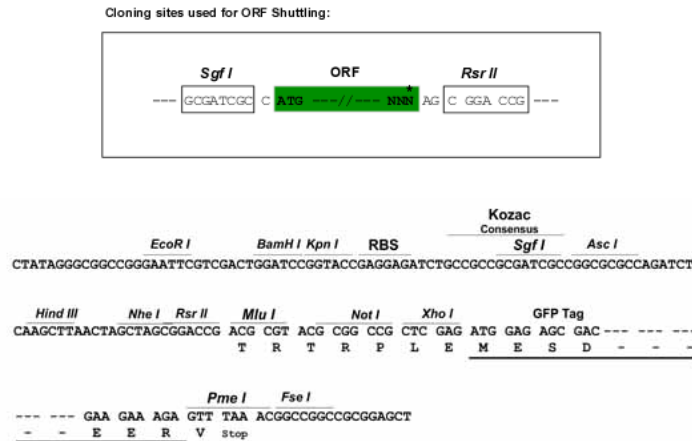
Protein Sequence: >MG219080 representing NM_173757
 Red=Cloning site Green=Tags(s)

MAAPMVRCGMLLARRLDASRLCLAGKRCLLSAAYVDSHQWEAREKEEYHLADLASLMDKAYERKLPVSSL
 SISRFDNIASREDLDSAEEYLYKFRHSPNCWYLRDWTIHSWIRQCLKYGAQDKALYTLVNVQYGFDP
 NFTFNLLMDYFIKKGNYKDALSVEIFEIMMQEAFDVPSTQFLSLVLYRCLAEKTELWEEERDFGASLLL
 SGLKQRNTVGLSSQLYGYALLGKVELQRGVRVYHGMPLMWTPGYLDRALQVMERVASSPEDLKLGREVL
 DVLGDGVLKVVTSPOVQSEAQPQEGEDGLGSANLVEQLDTEEPQSKLPRYLERFQASRSKLQELNRVES
 ESSLTLTTQLVKEKLPACEAEDLATYEQKLREWHLERVQLIQREQEQREKAKQEYQALSAAEKAA

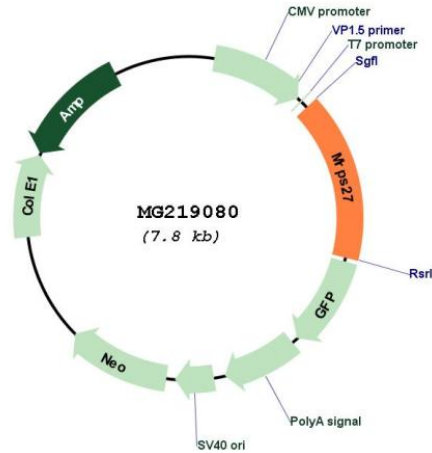
SGPTRRRLE - GFP Tag - V

Restriction Sites: SgfI-RsrII

Cloning Scheme:



Plasmid Map:



ACCN: NM_173757

ORF Size:	1245 bp
OTI Disclaimer:	The molecular sequence of this clone aligns with the gene accession number as a point of reference only. However, individual transcript sequences of the same gene can differ through naturally occurring variations (e.g. polymorphisms), each with its own valid existence. This clone is substantially in agreement with the reference, but a complete review of all prevailing variants is recommended prior to use. More info
OTI Annotation:	This clone was engineered to express the complete ORF with an expression tag. Expression varies depending on the nature of the gene.
Components:	The ORF clone is ion-exchange column purified and shipped in a 2D barcoded Matrix tube containing 10ug of transfection-ready, dried plasmid DNA (reconstitute with 100 ul of water).
Reconstitution Method:	<ol style="list-style-type: none">1. Centrifuge at 5,000xg for 5min.2. Carefully open the tube and add 100ul of sterile water to dissolve the DNA.3. Close the tube and incubate for 10 minutes at room temperature.4. Briefly vortex the tube and then do a quick spin (less than 5000xg) to concentrate the liquid at the bottom.5. Store the suspended plasmid at -20°C. The DNA is stable for at least one year from date of shipping when stored at -20°C.
RefSeq:	NM_173757.3 , NP_776118.2
RefSeq Size:	1849 bp
RefSeq ORF:	1248 bp
Locus ID:	218506
UniProt ID:	Q8BK72
Cytogenetics:	13 D1
Gene Summary:	RNA-binding component of the mitochondrial small ribosomal subunit (mt-SSU) that plays a role in mitochondrial protein synthesis. Stimulates mitochondrial mRNA translation of subunit components of the mitochondrial electron transport chain. Binds to the mitochondrial 12S rRNA (12S mt-rRNA) and tRNA(Glu). Overexpressed in hepatocellular carcinoma tissues compared with adjacent non-tumoral liver tissues.[UniProtKB/Swiss-Prot Function]