

Product datasheet for **MG219074**

Abca7 (NM_013850) Mouse Tagged ORF Clone

Product data:

Product Type:	Expression Plasmids
Product Name:	Abca7 (NM_013850) Mouse Tagged ORF Clone
Tag:	TurboGFP
Symbol:	Abca7
Synonyms:	Abc51; ABCX
Mammalian Cell Selection:	Neomycin
Vector:	pCMV6-AC-GFP (PS100010)
E. coli Selection:	Ampicillin (100 ug/mL)
ORF Nucleotide Sequence:	>MG219074 representing NM_013850 Red=Cloning site Blue=ORF Green=Tags(s)

TTTTGTAATACGACTCACTATAGGGCGGCCGGAATTCGTCGACTGGATCCGGTACCGAGGAGATCTGCC
GCC**CGATCGCC**

ATGGCCTTAGGCACACAGCTGATGCTTCTGCTGTGAAAAATTACACCTATCGACGGAGACAACCGATCC
AACTACTAGTGGAGTTGCTTTGGCCCTCTTCTCTTCTCATCCTAGTGGCTGCCGCTACTCCCACCC
CCCTCTGGAGCATCACGAATGCCACTTTCAAACAAGCCATTACCATCGCGGGCAGCGTGCCCTGGCTG
CAGGGCCTTGCTGCAACGTAACAACCTCTGCTTCCAGCACCAACGCCTGGCGAGAAGCTGGGGTCC
TGAGTAACTTAAGGATTCCTTGATCTCGAGGCTCCTCGCTGATACCCGCACAGTCTCGGGGCCACAG
CATCCAGGACATGCTGGATGCCCTGGGAAACTGATCCCCGTGCTCAGGGCAGTTGGAGGTGGAGCACGA
CCACAGGAGAGTGACCAGCCGACCAGTCAAGGGTCAAGTACTAAGCTTCTGGAGAAGATCCTGCAAAGGG
CATCCCTGGATCCTGTGCTGGGTCAAGCCAGGATTCTATGAGAAAGTTCTCAGATGCTATCAGGGATCT
TGCCCAGGAGCTCCTGACACTGCCAGCCTGATGGAGCTCCGAGCTTTGCTGCGGAGGCCCGAGGGTCA
GCTGGTTCTCTGGAGCTGGTTTCGGAGGCCCTCTGCAGTACCAAGGGACCCAGCAGTCCAGGGGCCCTGT
CCCTCAATTGGTACGAAGCCAACCAGCTTAATGAGTTCATGGGGCCAGAGGTGGCCCTGCCCTGCCTGA
CAACAGTCTCAGCCCTGCCTGCTGAGTTTGTGGGACACTGGATGACCACCCTGTGTCTCGGCTGCTC
TGGAGGCGCTGAAGCCATTGATCCTCGGAAAAATTCTTTGCACCTGACACAACTTCACTCGGAAG
TCATGGCTCAGGTGAACCAGACCTTCGAGGAGCTGGCTCTGTTGAGGGACCTACACGAACCTCGGGGGT
GCTGGGACCCAGATCTCAACTTCATGAATGACAGTACCAACGTGGCCATGCTTCAGAGCTTCTGGAT
GTGGGGGACAGGGCAGAGGCAGCAGACACCCAGAGCCAGAAGAAGTTGGAGGCTATCAAAGACTTTC
TGGATCCTAGTAGGGTGGCTACAGCTGGCGGGAGGCCACGCAGATATGGGACGCTGGCTGGAATCCT
AGGACAAATGATGGAGTGTGTCCCTGGACAAGCTGGAGGCTGTGCCCTCAGAGGAAGCTCTTGTGTCC
CGTGCCCTGGAGCTGCTGGGTGAGCGCCGCTCTGGGCAGGCATCGTGTCTGAGCCAGAGCATCCTC
TGGACCATCCGAAGTGCATCTCCAGCCCTGAGTCTGGCCACCTACGATTCAAGATTCGAATGGATAT
CGATGATGTCACAAGGACCAATAAGATCAGGGACAAGTTTGGGACCCAGGTCCGTCAGCAGATCCTTTC



[View online »](#)

ATGGACCTTCGGTATGTGTGGGGAGGCTTCGTGTACCTGCAGGACCTGCTGGAGCAGGCAGCTGTGCGAG
 TGCTCGGTGGCGGGAACCTCCCGCACAGGTCTCTACCTGCAGCAGATGCCACACCCCTGCTACGTGGATGA
 TGTGTTCTGCGGGTGTGAGCCGGTCTCTGCCTCTGTTTCTGACTCTGGCCTGGATTTATTTCGGTGGCG
 CTACTIONTGAAGCCGTGGTGCCTGAGAAAAGACACGGCTGCGAGAAACCATGCGTGCGATGGGGCTGA
 GCCGCGGGTGTCTGGCTTGGTTGGTTCTCAGCTGCCTGGGACCCCTTCTGGTCCAGCGCTGCGTTGCT
 GGTATTAGTGCTTAAGCTAGGGAACACTCTTCTTACAGCCACCCGGTTGTAATCTTCTTTTCTGGCG
 GCCTTCGCGGTGGCCACCGTCCAGATTTTCTGCTCAGCGCCTTCTTCCAGGGCCAACCTGGCAG
 CAGCCTGCGGGGGCTCGCCTATTTTGCCTCTATCTGCCTACGTACTIONTGTGTGGCCTGGCGCGAGCG
 CCTGCACCTGGGCGGACTCTTAGCTGCGAGCCTGCTGTCCCTGTAGCCTTTGGCTTTGGATGCGAAAGC
 CTGGCGCTACTAGAGGAGCAGGGAGACGGGGCTCAGTGGCACAATTTGGGCACAGCCCCGCGGAGGACG
 TCTTACGCTGGCCAGGTGTCTGCCTTCTGTTGCTTGTATGCCGTATCTACGGCCTTGCCTCTGGTA
 CCTAGAGGCTGTGTGCCAGGCCAGTATGGAATCCCTGAACCATGGAATTTCCCTTTTGGAGGAGCTAC
 TGGTGTGGACCTGGCCTCCCAAGATTCTGTCTGGCCCTGCCCCACAAGATCCCAAGTTCTGGTGG
 AAGAGCCACCCCTTGGCCTGGTTCTGGTGTCTCCATTGAGGCCCTGAAGAAACATTTTCGTGGCTGCC
 GCAGCCAGCCCTGCAAGGACTCAACCTTGACTTCTACGAAGGCCACATCACTIONTGTCTTTTGGGTCAAC
 GGGGCTGGCAAGACAACCACTGTCCATTTTGTAGTGGTCTTCTCCACCCAGTAGTGGCTGGCCTCCA
 TCTGGGCCATGATGTACAAACCAACATGGCAGCCATCCGGCCCCACCTGGGCATCTGCCCGAGTACAA
 TGTGCTGTTTGTATGCTGACAGTGAAGAACATGTTGGTTCTATGGCCGTTTGAAGGCGTGAGTGCA
 GCCGCATGGGCCCGAGCGGGAACGTCTGATACGGGATGTGGGGCTTACCCTCAAGCGGGACACACAGA
 CACGCCACCTCTCTGGTGAATGCGAGAAAACTTTCTGTGGCATTGCCTTTGTGGGTGGCTCTCGTGT
 GGTATCATGGACGAGCCACTGCTGGTGTGGACCCCGCTTCCCGCGTGGCATTGGGAATTGCTACTT
 AAGTACAGAGAAGGTGCGACACTGATTTCTCCACTCACCACTGGATGAGGCAGAGCTTTGGGAGATC
 GCGTGGCCATGGTGGCAGGTGGCTTTTGTGCTGTGGTCCCCGCTTTTCTTGGCGGACAGATTGGG
 CTGCGGTTACTACCTGACCTGGTGAAGAGTTCTCAGTCCCTCGTACCCATGATGCTAAGGGAGACAGT
 GAGGACCCAGACGGGAAAAGAAGTCAAGTGGCAATGGCAGGACGTGAGACACAGCGTTCACACGAGGAA
 CCTCAGACAAGAGCAACCAAGCCCCGGCTCCTGGCGCCGTTCCCATCACCCCAAGCACAGCCCGATACT
 AGAGCTAGTGCAGCAGCATGTGCCTGGAGCACAACCTGTTGGAGGACCTGCCCATGAGCTTCTGCTTGTG
 CTACCCTATGCGGGGGCCTGGATGGCAGCTTCGCCATGGTCTTCCAGGAGCTGGATCAGCAGCTGGAGC
 TCCTGGGTCTCACAGGCTACGGGATCTCGGACACCAACCTGGAGGAGATCTTCTAAAGGTGGTGGAGGA
 TGCGCACAGAGAAGGTGGGACTCTAGACCGCAGCTGCACCTTCGCACATGCACTCCACAGCCCCCACA
 GGGCCAGAGGCATCAGTTCTGGAGAATGGGGAGCTGGCCCAAGGGCTTGGCACCAACCTGCCCAAG
 TGCAAGGCTGGACACTTACCTGTCAACAGCTCCGGGCTCTGCTCCACAAGCGTTTCTGCTTGTCTGCCG
 CAGCCCGCGGGGCTGTTTGCACAGTTGTGTTGCCTGCCCTTTTGTGGGCTGGCCCTGTTCTTTCAGC
 CTATTGTGCCTCCTTTTGGCCAGTACCACCCCTGCAGCTCAGCCCTGCTATGTATGGCCCTCAGGTCT
 CGTTCTTTCAGTGAGGATGCCCTGGGGACCCCAACCGGATGAAGCTGCTGGAGGCTCTGCTAGGGGAGGC
 TGGGCTGCAGGAACCCAGTATGCAGGACAAAGATGCCAGGGGATCTGAGTGTACACACTCCCTAGCTTGC
 TACTTACGGTCCCTGAGTCCCTCTGATGTGGCCAGCATCTGGCCAGTGGCAACTGGACGCCAGAAT
 CTCCATCCCAGCTTGGCAATGCAGTCACTGGAGCCCGCCCTGTTGCCAGATTGCCCGCTGGAGC
 TGGGGTCCACCACCCCGGCTGTGGCTGGCTTGGGGAGGTGGTCCAGAACCTCACTGGCCGAAAT
 GTGTCTGACTTTTGGTGAAGACATACCCAGCCTGGTGCGCCGAGGCCTAAAGACCAAGAAGTGGGTGG
 ATGAGGTCAAGATATGGGGCTTCTCCCTGGGAGGCCGAGATCCAGACCTGCCACAGGGCATGAGGTGGT
 CCGCACATTGGCAGAGATTGGGCACTGCTGAGCCCCAACCTGGGAATGCGCTAGACCGTATCTGTAAC
 AACCTCACTCAGTGGGCCCTTGGCTTGTGCTCGGAACAGCCTCAAGATCTGGTTCAACAACAAGGGCT
 GGCATGCCATGGTGGCCTTTGTGAACCGAGCCAACAATGGACTCCTACATGCCCTCTACCATCTGGTCC
 AGTCCGCCATGCCACAGCATCACTCACTCAACCATCCTTTGAACTTGACCAAGGAGCAGCTATCTGAA
 GCTACACTGATAGCCTCCTCTGTGGATGCTTGTCTCCATCTGTGTGGTCTTCCCATGTCATTTGTCC
 CAGCCAGCTTTACCCTGGTCTCATAGAGGAACGCATCACAGAGCCAAGCATCTGCAGCTGGTCCAGCGG
 CCTGCCCAAACCTCTATTGGCTTGGCAACTTCTCTGGGACATGTGTACTIONTGGTGGCAGTGTGC
 ATAGTGGTGTTCATCTTCTAGCCTTTACGAGAGAGCCTATGTGGCCCCAGAGAACCTGCCTGCTCTCT
 TACTCTTGTCTGCTGTATGGGTGGTCTATCACACCACTCATGTACCCAGCCTCCTTCTTCTTCTCAGT
 GCCCAGCAGGCCTATGTGGTGTACCTGCATCAACCTTCTTATTGGCATCAATAGCAGCATGGCCACC
 TTCGTGCTAGAAGTCTTTCAGATCAGAACCTGCAAGAAGTGAAGCCGATCTGAAACAAGTGTTCCTTA

TTTTCCCCACTTTTGCCTTGGCCGAGGGCTCATTGACATGGTTCGGAACCAGGCCATGGCAGATGCCTT
TGAGCGCTTAGGAGACAAGCAATTTTCAGTACCCTACGCTGGGACATCATTGGCAAGAACCTCCTGGCC
ATGATGGCCAGGGACCTCTGTTCCCTCATCACACTCTGCTCCAACACCGCAACCGTCTCCTGCCAC
AATCAAAACCAAGACTGCTGCCGCCCTGGGGGAGGAGGATGAGGATGTGGCTCAAGAGCGTGAGCGGGT
GACCAAGGGGGCTACCCAGGGGGATGTGCTAGTCTCAGGGACTTGACCAAGGTTTACCCTGGGCAGAGG
AACCCAGCTGTGGATCGCTGTGCTTAGGGATCCCCCTGGGGAGTGTTCGGGCTGCTGGGTGTCAACG
GGCAGGGAAGACATCCACCTTCCGCATGGTGACAGGGGACACACTGCCAGCAGTGGTGAAGCAGTACT
GGCAGGCCACAACGTGGCCAGGAGCGGTCTGCCGCACACCGCAGCATGGGCTACTGTCCCCAGTCTGAT
GCCATCTTCGACCTGCTGACCGGCCGGGAACATCTGGAAGTGTTCGCTCGCCTGCGCGGGGTGCCCGAGG
CCCAAGTTGCCAGACTGCGCTCTCTGGCCTGGTGCCTGGGCCTTCTAGCTATGCAGACCGACCCGC
GGGTACCTACAGCGGAGGCAACAACGGAAGCTGGCGACAGCCTTAGCTCTGGTTGGTGACCCAGCTGTG
GTCTTTCTGGACGAGCCACCACAGGCATGGACCCAAGTGC GCGGCGATTTCTTTGGAACAGCTTGCTGT
CCGTGGTGC GCGAGGGCCGCTCCGTAGTGTACGTGCGACAGCATGGAGGAGTGCAAGCGCTCTGCAC
GCGCTGGCCATCATGGTGAACGGGCGGTTCCGCTGTCTGGGAAGCTCTCAGCATCTCAAAGGCAGGTTT
GGGCTGGCCACACACTGACTCTAAGGGTCCCACCGACCAGCCTGAGCCGGCGATAGCCTTCATCAGGA
TCACATTCCTGGGGCTGAACTCCGGGAGGTGCACGGCAGCCGCTGCGCTTCCAAGTCCACCGGGGGG
CAGATGCACCCTGACACGAGTGTTCAGGAGCTGGCTGCCAGGGCAGGGCCACGGTGTGGAGGACTTC
TCTGTGAGCCAGACCACTCTGGAGGAGGTTCCTATATTTCTCAAAGACCAAGGGGAAGAGGAAGAGA
GCAGTCGGCAGGAGGCTGAAGAAGAGGAGGTTTCAAACCTGGCCGGCAGCATCCCAAACGTGTCAGCCG
ATTCTGGAAGACCCAGCTCTGTGGAGACCATGATC

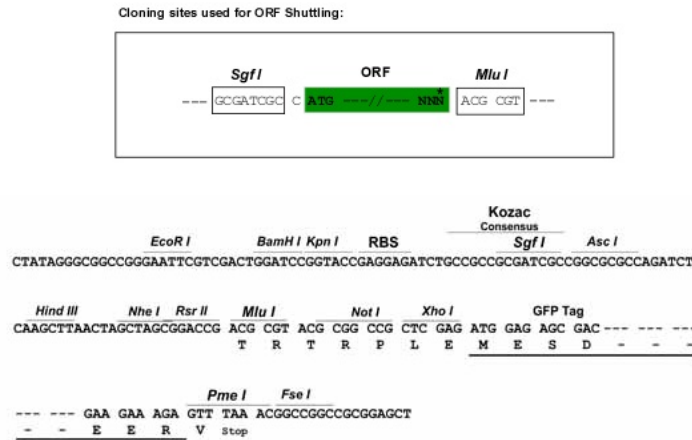
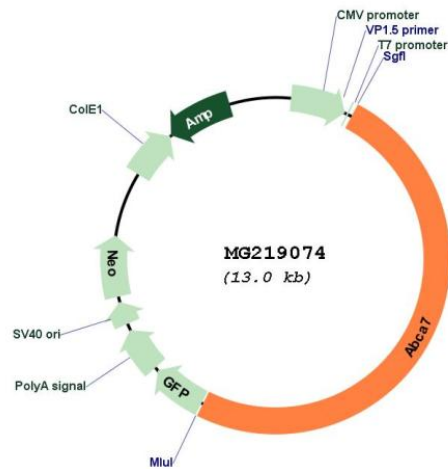
ACGCGTACGCGGGCCGCTCGAG - GFP Tag - GTTTAA

Protein Sequence: >MG219074 representing NM_013850
 Red=Cloning site Green=Tags(s)

MALGTQLMLLLWKNYTYRRRQPIQLLVELLWPLFLFFILVAVRHSHPPLEHHECHFPNKPLPSAGTVPWL
 QGLVCNVNNSCFQHPTPGEKPGVL SNFKDSLISRLLADTRTVLGGHSIQDMLDALGKLI PVLRVAVGGGAR
 PQESDQPTSQGSVTKLLEKILQRASLDPVLGQAQDSMRKFSDAIRDLAQELLTLP SLMELRALLRRPRGS
 AGSLELVSEALCSTKGPSSPGGLSNWYEANQLNEFMGPEVAPALPDNSLSPACSEFVGTLDLDDHPVSRLD
 WRRRLKPLILGKILFAPDTNFTRKLM AQVNQTFEELALLRDLHELWGV LGPQIFNFMNDSTNVAMLQRLLD
 VGGTGQRQTPRAQKKLEAIKDFLDPSRGGYSWREAHADMGRLAGILGQMMECVSLDKLEAVPSEALVS
 RALELLGERRLWAGIVFLSPEHPLDPSELSSPALSPGHLRFKIRMDIDDVTRTNKIRDKFWDPGSPADPF
 MDLRYVWGGFVYLQDLLEQA AVRVLGGNSRTGLYLQMPHPCYVDDVFLRVLSRSLPLFLTLAWIYSVA
 LTVKAVVREKETRLRETRAMGLSRAVLWLGWFLSCLGPFLVSAALLVLVLKLGNILPYSHPVVIFLFLA
 AFAVATVAQSFLLSAFFSRANLAAACGLAYFALYLPYVLCVAVRERLHLGGLLAASLLSPVAFGFCES
 LALLEEQDGAQWHNLGTGAEDVFSLAQVSFALLLDAVIYGLALWYLEAVCPGQYGIPEPWNFPFRSY
 WCGPGPPKSSVLAPAPQDPKVLVEEPPLGLVPGV SIRGLKKHFRGCPQPALQGLNLDYEGHITAF LGHN
 GAGKTTTSLISGLFPSSGSASILGHDVQTNMAAIRPHLGICPQYNVLFDMLTVEEHVWFYGR LKGVSA
 AAMGPERERLIRDVGLTLKRDTQTRHLSGGMQRKLSVAIAFVGGSRVIMDEPTAGVDPASRRGIWELLL
 KYREGRTLILSTHHLDEAELLDGRVAMVAGGSLCCCGSPLFLRRHLGCGYYLTLVKSSQSLVTHDAKGDS
 EDPRREKSDGNGRTSDTAFTRGTSDKSNQAPAPGAVPIPTSTARILEL VQQHVPGAQLVEDL PHELLLV
 LPYAGALDGSFAMVFQELDQQLLELGLTGYGISDNL EEIFLKVVEDAHREGGDSRPLHLRTCTPQPPT
 GPEASVLENGELAPQGLAPNAAQVQGWLTTCQQLRALLHKRFLARRSRRLFAQVVLPA LFVGLALFFS
 LIVPPFGQYPLQLSPAMYGPQVSFFSEDAPGDPNRMKLEALLGEAGLQEPSMQDKDARGSECTHSLAC
 YFTVPEVPPDVASILASGNWTPESPSPACQCSQPGARRLLPDCPAGAGGPPPPQAVAGLGEVVQNL TGRN
 VSDFLVKTYPSLVRRGLKTKKWVDEVRYGGFSLGGRDPDLPTGHEVVRTLAEIRALLSPQPGNALDRILN
 NLTQWALGLDARNSLKIWFNKGWHAMVAFVNRANGLLHALLPSGPVRHAHSITTLNHPLNL TKEQLSE
 ATLIASSVDVLSICVVFAMSFVPASFTLVLIEERITRAKHLQLVSGLPQTL YWLG NFLWDMCNYLVAVC
 IVVFI FLAQQRAYVAPENLPALLLLLLLYGWSITPLMYPASFFF SVPSTAYVVLTCINLFIGINSSMAT
 FVLELLSDQNLQEVSRILKQVFLIFPHFCLGRGLIDMVRNQAMADAFERLGD KQFQSPLRWDIIGKNLLA
 MMAQGPLFLLITLLLQHRNRLLPQSKPRLLPPLGEEDEDVAQERERVTKGATQGDV LVL RDLTKVYRGQR
 NPAVDRLCLGIPPGECEGGLLVNGAGKTSTFRMVTGDTLPSSGEAVLAGHNVAQERSAAHRSMGYCPQSD
 AIFDLLTGREHLELFARLRGVPEAQVAQTALSGLVRLGLPSYADRPAGT YSGGNKRKLATALALVGDPAV
 VFLDEPTTGMDPSARRFLWNSLLSVVREGRSVLTS HSMEECEALCTRLAIMVNGRFRCLGSSQHLKGRF
 GAGHTLTLRVPPDQPEPAIAFIRITFPGAELREVHGSRLRFQLPPGGRCTLTRVFRELA AQGRAHGVEDF
 SVSQTTLEEVFLYFSKDQGEESRQEAEEEEVSKPGRQHPKRVSRFLEDPSVETMI

TRTRPLE - GFP Tag - V

Restriction Sites: Sgfl-MluI

Cloning Scheme:

Plasmid Map:


ACCN: NM_013850

ORF Size: 6477 bp

OTI Disclaimer: The molecular sequence of this clone aligns with the gene accession number as a point of reference only. However, individual transcript sequences of the same gene can differ through naturally occurring variations (e.g. polymorphisms), each with its own valid existence. This clone is substantially in agreement with the reference, but a complete review of all prevailing variants is recommended prior to use. [More info](#)

OTI Annotation: This clone was engineered to express the complete ORF with an expression tag. Expression varies depending on the nature of the gene.

Components: The ORF clone is ion-exchange column purified and shipped in a 2D barcoded Matrix tube containing 10ug of transfection-ready, dried plasmid DNA (reconstitute with 100 ul of water).

Reconstitution Method:

1. Centrifuge at 5,000xg for 5min.
2. Carefully open the tube and add 100ul of sterile water to dissolve the DNA.
3. Close the tube and incubate for 10 minutes at room temperature.
4. Briefly vortex the tube and then do a quick spin (less than 5000xg) to concentrate the liquid at the bottom.
5. Store the suspended plasmid at -20°C. The DNA is stable for at least one year from date of shipping when stored at -20°C.

RefSeq: [NM_013850.2](#)

RefSeq Size: 6607 bp

RefSeq ORF: 6480 bp

Locus ID: 27403

UniProt ID: [Q91V24](#)

Cytogenetics: 10 39.72 cM

Gene Summary: The protein encoded by this gene is a member of the superfamily of ATP-binding cassette (ABC) transporters. ABC proteins transport various molecules across extra- and intracellular membranes. ABC genes are divided into seven distinct subfamilies (ABC1, MDR/TAP, MRP, ALD, OABP, GCN20, White). This protein is a member of the ABC1 subfamily. Members of the ABC1 subfamily comprise the only major ABC subfamily found exclusively in multicellular eukaryotes. This protein is widely expressed with highest detection in spleen and hematopoietic tissues. Defects in this gene cause an increase in amyloid-beta deposits in a mouse model of Alzheimer's disease, and a related human protein is thought to play a role in lipid homeostasis in cells of the immune system. [provided by RefSeq, Jan 2017]