

Product datasheet for **MG219061**

Sytl2 (NM_031394) Mouse Tagged ORF Clone

Product data:

Product Type:	Expression Plasmids
Product Name:	Sytl2 (NM_031394) Mouse Tagged ORF Clone
Tag:	TurboGFP
Symbol:	Sytl2
Synonyms:	A1266830; mKIAA1597; Slp2
Mammalian Cell Selection:	Neomycin
Vector:	pCMV6-AC-GFP (PS100010)
E. coli Selection:	Ampicillin (100 ug/mL)



[View online »](#)

ORF Nucleotide
Sequence:

>MG219061 representing NM_031394
 Red=Cloning site Blue=ORF Green=Tags(s)

TTTTGTAATACGACTCACTATAGGGCGGCCGGGAATTCGTCGACTGGATCCGGTACCGAGGAGATCTGCC
 GCCCGCATCGCC

ATGATCGACTTAAGTTTCTGACAGAGGAGGAGCAAGACGCCATCTTAAGGTTCTGCAGAGGGATGCTG
 CCCTGAAGAGGGCTGAAGAGGAGAGAGTCAACATCTGCCTGAAAAAATTAAGGATGACCAACAATAAA
 GAATATGAGTGGCCAATGGTTTTATGAAGCTAAGGCAAAAAGACACAGGGACAAAATCCACGGTGTGAC
 ATCATCAGAGCATCCATGAGAAGGAAGAAGCTCCAGCGGCAGCTGAGCAGAATAAGGACACAGCAATGA
 GGGCAAAGGAGAGCTGGGTGAATAATGTTAACAAAGATGCTGTCTTCTCCAGAGATAGCTGTTGTGGA
 AGAGCCAGAAGATGACACAGATCCCGCAGGCCAAGTTCAGTTTGGTGGATCCAGCTTCCAGTGTGATT
 GATATGTCCAGGAAAGTACGAGGACTCCAGCTGTGTCTCTGCCAAGCAAAGGAAGAATCCATTCAACA
 GCCCAAGCTGCCGAAGATCACTCCTTGAACAAACCAACCCGAGCAGTCAAAAAGTGGAAAAGCTGG
 TTTATTTAGATTTCAAAAGAGGGTGAAGTTGTGAGAATCAAAGAAAAGTCACTATCCAGATATGCCA
 CGTCAGCAGTTAGAGAAAACCAAGCAAACCTGTATCCACAGAGCCTGAAAAATGCGTCTCATACCAAAGCTC
 CAATCCCCAAAGCCAGAAAACCTGATCTACAAATCAAATGACTTAGAGAAAAGATGATAACCAAGTCTTTTCC
 CAGACAACGGAGGGACTCCCTGAATGCGAGAGGGGCTCCAAGAGGGATCCATAAGCGCAACTCCAGTTCC
 AGCAGCACGGACTCAGAGACCCTCCGTTTAAATTAACAACCTTGATCCGAAAAGCAAAAATCCTATCACCTG
 GCCTAACCATCCACGAGAGAATCTCTGAGAAGGAATTTCTTTAGAAAGCAGACTCTTCCACAAGCTCACT
 AGAGCCGTTAAGCACGTGAGATTCTCTGCCGTGAAGAATGAGCTTCCACAAAGTCTAGACCCGTCCTT
 GGCCAGGAAGTGGGAGAAATTTACTGTTTTAGAACTGACCAGTTGCAAAAACCACTTTGTCTCATTACAGTGTGTC
 AAGCCCAAGCGATTCAGGAAGGGAAAGAGAACAGCTGATGTCTTCTGGGTCTGCTCAAGAGATGAGATC
 CCTTGTCAATTCAGACATTCTACCCACAGACCTCAGTGTGTTGAGAGTTCATCCGTCATCAATGGGCAAC
 AAGAGAAATCATCACATTTTACAAAGCTTCCATCAGAATTGTCCAAAAGCCCTTCCGATGAACTGACTCA
 GTGTGGTGTGAGCCTGAGCCATCACAGACAGCAGACCACAGTTTTAGAGACCATCGGCAAGGTTCAGAAGAA
 GAGCACAGCCCTGTTTTGAAAACCTTGGAAAGAAGAGCTGCTAGGAAATGCTTCCAAAAGTCTAGAAG
 ACATTCATCAGATTCATCAAATCAAGCAAAAGTAGATAATCTGCCTGAAGAATTAGTGCAGTGTGCTGA
 AGATGATCAAAAAGCCGACCAAGAACCAGATACAAATGAATGTATACCAGGAATTTCCACAGTGCCTTCA
 CTGCTGATAATCAGTTTTCCACCCTGACAAACTCAAAGGATGAGCAAGTCCGTGCCAGCATTTCTTC
 AAGATGAGGCGAGTGGCAGTGTGATGAGCGTTTACAGTGGAGACTTTGGCAACCTAGAAGTAAAAGGAAG
 CGTGACGTTTGCCTCGACTACGTGGAGTCCCTGAAAGAGCTGCATGTGTTTGTGGCCAGTGTAAAGGAT
 TTAGCAGCAGCAGATGTTAAGAAACAGCGCTCAGATCCGTATGTAAGACCTATCTGCTACCAGACAAAAG
 GCAAAAATGGGCAAGAAGAAGACACTCGTAGTGAAGAAGACCTTGAATCCTGTATACAACGAGATATTGCG
 GTATAAAATGAAAGGCAATTTCTAAAGACGCAGAAGTTGAACCTGTCCGTTTGGCATCGGGATACATTT
 AAGCGCAACAGCTTTCTGGGGGAGTGGAGCTCGACCTGGAAACGTGGGATTGGGACAGCAAAACAGAAACA
 AACAGCTGAAGTGGTACCACTGAAGAGGAAGACAGCACCAGTTGCCCTCGAGACAGAAAACAGAGGTGA
 AATGAAACTAGCTCTCCAGTATGTTCCGGAACCAAGCCCTGGCAAAAAGCTTCTACAACCTGGAGAAGTCA
 CACATCTGGGTGAAGGAATGCCTTGACCTCCCACTGTTGAGGGGACCCACCTAAATTTCTTTGTTAAAT
 GTACCATCCTTCCAGATACCAGTAGAAAAAGTCCGCAAGACAAGAGCTGTAGGAAAACCAACCAACCC
 CGTCTTCAACCATACCATGGTGTATGATGGGTTGAGCCTGAAGATCTGATGGAAGCCTGTGTAGAACTC
 ACAGTCTGGGACCATTATAAACTAACCAACCAAGTTTCTGGGAGGTCTCCGGATCGGCTTTGGAACAGGAA
 AAAGCTACGGGACTGAAGTGGATTGGATGGATTCTACTTCTGAGGAAGTTGCTCTCTGGGAGAAGATGGT
 AAATCTCCCAACACTTGGGTTGAAGCGACGCTGCCCTCCGGATGCTTCTGATTGCCAAGCTTTCCAAG

ACGCGTACGCGGCCGCTCGAG - GFP Tag - GTTTAA

Protein Sequence: >MG219061 representing NM_031394
 Red=Cloning site Green=Tags(s)

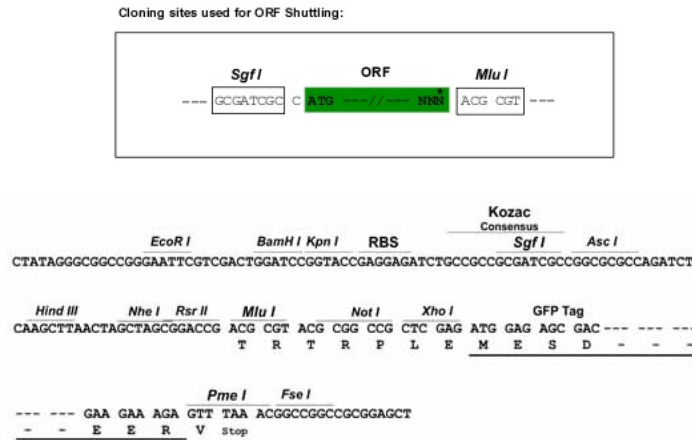
MIDL SFL TEEEQDAILKVLQRDAALKRAEEERVHRLPEKIKDDQQLKNMSGQWFYEAKAKRHRDKIHGAD
 IIRASMRKRLPAAAEQNKDTAMRAKESWVNNVKNDAVLPPEIAVVEEPEDDTPAGPSSSLVDPASSVI
 DMSQESTRTPAVSLPKQRKNPFNSPKLPEDHSLQQTKEQSKTGKAGLFQISKEGELSESKEKSSIPDMP
 RQQLEKPKQTVSTEPENASHTKAPIPKARKLIYKSNMLEKDDNQSFPRQRDSL NARGAPRGILKRNSSS
 SSTDSETLRLNLYNLDPKSKILSPGLTIHERISEKEFSLEDDSSTSLEPLKHVRFSAVKNELPQSPRPVL
 GQEVGEFTVLESQQLQNGTEDAGDIEEFQNHPELSHKTPLSHYQLVSSPDSGREREQLMSSGSAPRDEI
 PCHSDILPTGPQCVESSSVINGQQEKSSHFTKLPSSELSKSPSDEL TQCGEPEPSQTADHSFRDRHQGSEE
 EHSPVLKTLERRAARKLPSKSLEDIPSDSSNQAKVDNLPEELVRS AEDDQKADQEPDTNECIPGISTVPS
 LPDNQFSPDKLKRMSKSVPAFLQDEASGSVMSVYSGDFGNLEVKGSVQFALDYVESLKELVHVAQCKD
 LAAADVKKQRSDPYVKTLYLLPDKGKMGKKKTLVVKKTLNVPVYNEILRYKIERQFLKTQKLNLSVWHRDTF
 KRNSFLGEVELDLETWDWDSKQNKQLKWYPLKRKTAPVALETENRGEMKLALQYVPEPSGKPLPTTGEV
 HIWVKECLDPLLRGSHLNSFVKCTILPDTSRKSRQKTRAVGKTTNPVFNHTMVYDGFREPDLMEACVEL
 TVWDHYKLTNQFLGGLRIGFGTGKSYGTEVDWMDSTSEEVALWEKMNVPNTWVEATLPLRMLLIAKLSK

TRTRPLE - GFP Tag - V

Restriction Sites:

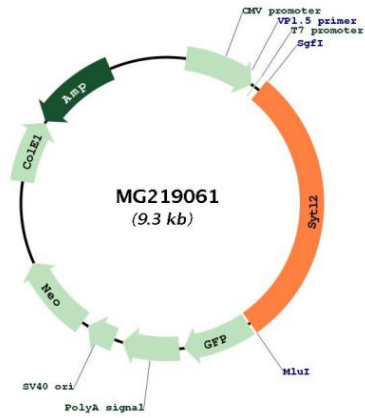
Sgfl-MluI

Cloning Scheme:



ACCN:	NM_031394
ORF Size:	2730 bp
OTI Disclaimer:	The molecular sequence of this clone aligns with the gene accession number as a point of reference only. However, individual transcript sequences of the same gene can differ through naturally occurring variations (e.g. polymorphisms), each with its own valid existence. This clone is substantially in agreement with the reference, but a complete review of all prevailing variants is recommended prior to use. More info
OTI Annotation:	This clone was engineered to express the complete ORF with an expression tag. Expression varies depending on the nature of the gene.
Components:	The ORF clone is ion-exchange column purified and shipped in a 2D barcoded Matrix tube containing 10ug of transfection-ready, dried plasmid DNA (reconstitute with 100 ul of water).
Reconstitution Method:	<ol style="list-style-type: none">1. Centrifuge at 5,000xg for 5min.2. Carefully open the tube and add 100ul of sterile water to dissolve the DNA.3. Close the tube and incubate for 10 minutes at room temperature.4. Briefly vortex the tube and then do a quick spin (less than 5000xg) to concentrate the liquid at the bottom.5. Store the suspended plasmid at -20°C. The DNA is stable for at least one year from date of shipping when stored at -20°C.
RefSeq:	NM_031394.2 , NP_113571.2
RefSeq Size:	3738 bp
RefSeq ORF:	2733 bp
Locus ID:	83671
UniProt ID:	Q99N50
Cytogenetics:	7 E1
Gene Summary:	Isoform 11 acts as a RAB27A effector protein and plays a role in cytotoxic granule exocytosis in lymphocytes. Required for cytotoxic granule docking at the immunologic synapse. Isoform 1 may play a role in melanosome transport and vesicle trafficking. It controls melanosome distribution in the cell periphery and regulates melanocyte morphology. Isoform 1 acts as a positive mediator of mucus secretion by the surface mucus cells of the stomach. Mediates basal mucus secretion by gastric surface cells by promoting the proper granule biogenesis and docking of mucus granules with the apical plasma membrane.[UniProtKB/Swiss-Prot Function]

Product images:



Circular map for MG219061