

Product datasheet for **MG219030**

Adad1 (NM_009350) Mouse Tagged ORF Clone

Product data:

Product Type:	Expression Plasmids
Product Name:	Adad1 (NM_009350) Mouse Tagged ORF Clone
Tag:	TurboGFP
Symbol:	Adad1
Synonyms:	Tenr
Mammalian Cell Selection:	Neomycin
Vector:	pCMV6-AC-GFP (PS100010)
E. coli Selection:	Ampicillin (100 ug/mL)



[View online »](#)

ORF Nucleotide Sequence:

>MG219030 representing NM_009350
 Red=Cloning site Blue=ORF Green=Tags(s)

TTTTGTAATACGACTCACTATAGGGCGGCCGGGAATTCGTCGACTGGATCCGGTACCGAGGAGATCTGCC
 GCC**CGCATCGCC**

ATGGCGACCGCGGGCGGAGCCGACGAGCCCCGGTCCCGGCCCTCGGCTCGGCCTGCCTCTGGCAGCTC
 ACCTGCCGCGAGCCTGGGCGGGAGGGCGCGAAGGACAGCGTCGGGGGAGAGAAAACCTTGGAAACAA
 TGAAGTTCAGAGTCCAGGGTCCAGCTTTGCTCAGATGCTGAAAAAGAATTTGCCAGTTCAGCCA
 TCAGCTCAGACAGTAACCTTGCCTACTGGATATTCCTCTGAAAGTTGTAGTCTGTGCAATATGGCATCCA
 AGGTTACGCAAGTGACAGGTAATTTCCAGAGCCATTGCTTTCAAAGGTCTTTCATCTATTTCAAATCC
 TGTCTTCTCCAAAAAACTACCTAAAGAGTTTATAATGAAATACAAACGTGGAGAGATCAATCCCGTG
 TCGGCCTGCACCAGTTGCACAAATGCAGCGTGTTCAGCTTGACCTTAAGGAACTGTAAACACAGGAA
 ATGTTATGGGACCATATTTGCTTTTGTGCTGTGGTGGATGGTATTAGTACAAGACAGGACTGGGACA
 GAATAAAAAGGAATCAAGATCCAATGCAGCAAAGTTAGCTCTTGACGAGCTTCTACAACCTGGATGAGCCT
 GAACCGAGAGTTTTAGAACCAGCAGGACCCTCTATCCCTGCAGAACCTGTTGTTACACCTGAAGCAG
 CATATGTTTCAAAGTGAATATGAAGGGAGACAAGTCCAGTATGCCAAGATTTACAGCTTGTAAAGA
 AACATTTGGTCAACTAATTTCTAATCACTCACAAATATCTGAAATGTAGCAGTTTATTGGCTGCTTTTATT
 ATTGAAAGAGCTGGACATCATGAAGTTGTGGCTATAGGCACAGGCGAATACAACCTACAGCCAGTGCATCA
 AGCCAAATGGAAGGGTGTGCACGATACTCATGCAAGTTGTACAGCAAGAAGGTCTCTCCTTAGGTAATT
 TTATAGACAGCTTCTGCTCTTCTATAGCAAAAATCCTGCTATGATGGAAGTCAATCTTTGTACAGAA
 CCAGCTCTAATCTACTTACTCTGAAACAAAACATCAACCTTTACCTCTATGAACCAAGTTGCCGAAAG
 GATCAGCCAGATTAAGTACAGCTTACGCTTAATCCACATTCTATTTCTGCGTTTGAAGCAATGAAGA
 GCTGAGTCTCCATGTGGCTGTTGAAGGCAAAATTTATCTTACTGTTTACTGTTCTGCAGACGGGGTTAAT
 AGAGTAAACAGTATGTCCTCAAGTGACAAGCTGACAAGATGGGAGGTGCTTGGTGTACAGGAGCCTTGC
 TGAGTCACTTTATACAGCCAGTTTATATCAGCAGTATACTTGTGGTGTAGGGAATTGCAATGACACAAG
 AGGCTTAGAAATCGCAATAAACCAGCGTGTGATGACGCACTCACATCAAACTGCCCATGTTTTACTTGT
 GTCACAGACCTCATATTAGCTTAGTGCCACCGCATATCCTCTGCAGATAAACTGGACCATAAATCAC
 TCAGTTTGAATTGGCACAAGGGGACAATTCTTTGGAGATTGTGGATGGCCTAAATGGGAAGATTACTGA
 AAGTTCTCCATTTAAAAGTGGTTTATCAATGGCAAGTCCGCTTTGTAAGGCTGCAATGTTAAGTCGATTT
 AATCTGCTTGCCAAGGAAGCTAAAACAGATGATTTACTTGAAGCTCGGACATACCACGGGCTAAGTGTA
 TGCTGAGCCCTATCAAGAAGCAAAGGCGTTACTGAAGGCTACTTGCAGCAGCATGGCTATGGCTCCTG
 GATTGTGAAATCTCCCTGTATAGAGCAATTTAGTATG

ACGCGTACGCGGCCGCTCGAG – GFP Tag – GTTTAA

Protein Sequence:

>MG219030 representing NM_009350
 Red=Cloning site Green=Tags(s)

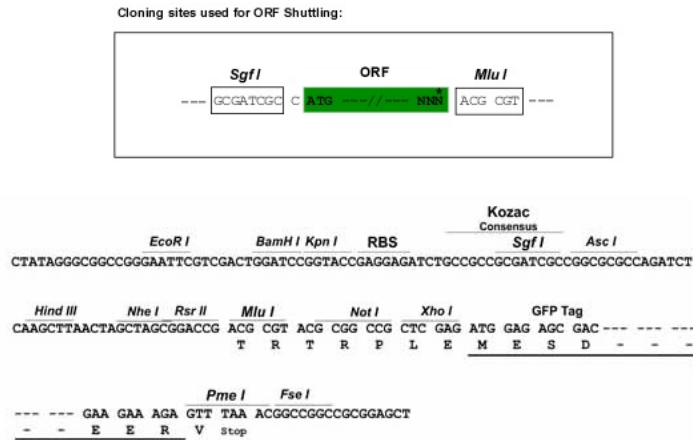
MATAGGSRRAPVPGPRLGLPLAAHLPASLGGEGAKDSVGGKESGNNDWFQSSRVPSFAQMLKKNLPVQP
 SAQTVTLPTGYSSSESCSLSNMASKVTQVTGNFPEPLL SKGLSSISNPVLPKPKLPKEFIMKYKRGEINPV
 SALHQFAQMQRVQLDLKETVTTGNVMGPYFAFCVVDGIQYKTLGQNKKESRSNAAKLALDELLQLDEP
 EPRVLEPAGPPPIPAEPVVTPEAAVYVSKVQYEGRQVQYAKISQLVKETFGQLISNHSQYLKCSSSLAAFI
 IERAGHHEVVAIGTGEYNYSQC IKPNGRVLHDTHAVVTARRSLLRYFYRQLLLFYSKNPAMMEKSIFCTE
 PASNLLTLKQININLYLYMNQLPKGSAQIKSQLRLNPHSISAFEANEELSLHVAVEGKIYLYVYCSADGVN
 RVNSMSSSDKLRWEVLGVQGALLSHFIQPVYISSILVGDGNCNDRGLEIAINQRVDDALTSKLPFYLY
 VNRPHISLVPTAYPLQINLDHKSLSLNWAQGDNSLEIVDGLNGKITESSPFKSGLSMASRLCKAAMLSRF
 NLLAKEAKTDDLLEARTYHAAKCMSPYQEA KALLKAYLQQHGYGSIWVSPCIEQFSM

TRTRPLE – GFP Tag – V

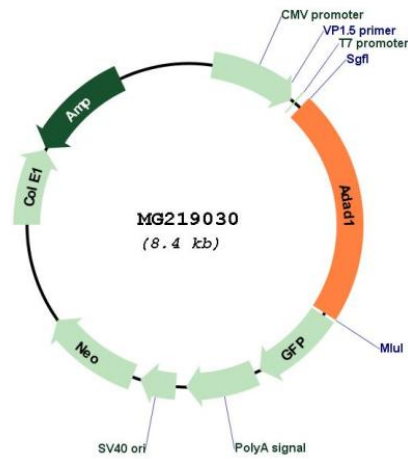
Restriction Sites:

Sgfl-MluI

Cloning Scheme:



Plasmid Map:



ACCN: NM_009350
ORF Size: 1857 bp

OTI Disclaimer:	The molecular sequence of this clone aligns with the gene accession number as a point of reference only. However, individual transcript sequences of the same gene can differ through naturally occurring variations (e.g. polymorphisms), each with its own valid existence. This clone is substantially in agreement with the reference, but a complete review of all prevailing variants is recommended prior to use. More info
OTI Annotation:	This clone was engineered to express the complete ORF with an expression tag. Expression varies depending on the nature of the gene.
Components:	The ORF clone is ion-exchange column purified and shipped in a 2D barcoded Matrix tube containing 10ug of transfection-ready, dried plasmid DNA (reconstitute with 100 ul of water).
Reconstitution Method:	<ol style="list-style-type: none">1. Centrifuge at 5,000xg for 5min.2. Carefully open the tube and add 100ul of sterile water to dissolve the DNA.3. Close the tube and incubate for 10 minutes at room temperature.4. Briefly vortex the tube and then do a quick spin (less than 5000xg) to concentrate the liquid at the bottom.5. Store the suspended plasmid at -20°C. The DNA is stable for at least one year from date of shipping when stored at -20°C.
RefSeq:	NM_009350.3 , NP_033376.2
RefSeq Size:	1972 bp
RefSeq ORF:	1860 bp
Locus ID:	21744
UniProt ID:	Q5SUE7
Cytogenetics:	3 B
Gene Summary:	Plays a role in spermatogenesis. Binds to RNA but not to DNA.[UniProtKB/Swiss-Prot Function]