

## Product datasheet for **MG219028**

### **Slc6a18 (NM\_001168644) Mouse Tagged ORF Clone**

#### **Product data:**

Product Type:	Expression Plasmids
Product Name:	Slc6a18 (NM_001168644) Mouse Tagged ORF Clone
Tag:	TurboGFP
Symbol:	Slc6a18
Synonyms:	B0AT3; D630001K16Rik; Xt2; Xtrp2
Mammalian Cell Selection:	Neomycin
Vector:	pCMV6-AC-GFP (PS100010)
E. coli Selection:	Ampicillin (100 ug/mL)



[View online »](#)

**ORF Nucleotide Sequence:**

>MG219028 representing NM\_001168644  
 Red=Cloning site Blue=ORF Green=Tags(s)

TTTTGTAATACGACTCACTATAGGGCGGCCGGAATTCGTCGACTGGATCCGGTACCGAGGAGATCTGCC  
 GCC**CGCATCGCC**

ATGGCACAGGCCTCAGGGATGGACCCGCTTGTGGACATTGAGGATGAAAGACCCAAGTGGGACAACAAC  
 TCCAGTACCTCCTGAGCTGCATCGGTTTTGCTGTGGGGCTGGGGAACATATGGAGGTTCCCTACCTGTG  
 CCAGACCCACGGAGGAGGGCCCTTCTCATCCCCTATTTTCATTGCCCTGGTCTTTGAGGGTATCCCGCTT  
 TTCTACATCGAGCTTGCCATTGGCCAGCGCCTACGGAGGGGAAGCATTGGAGTGTGGAAGACCATCTCCC  
 CTTACCTCGGTGGCGTAGGCCTGGGCTGCTTCTCAGTGTCTTCTGGTCACTTTGTTACTACAACACGGT  
 TCTCTGTGGGTCTTATGGTCTTCTCAACTCCTTCCAACACCCGCTGCCCTGGAGCACATGTCCGCTG  
 GATCTCAACAGAACAGGATTTGTGCAGGAATGCCAGAGCAGTGGCACCGTGGAGTACTTCTGGTACCGGC  
 AGACTCTGAATATCACATCTGACATCAGCAACACAGGCACTATCCAATGGAAGCTGTTCTCTGCCTGGT  
 GGCTGTGGTCAACTGTGTACCTGTGTGTGCATCAGAGGCATTGAGAGCACGGGGAAGGTGATCTACTTT  
 ACAGCCTTATCCCTTACCTGGTCTAACCATCTTCTCATCAGAGGTCTTACCCTGCCTGGAGCAACAG  
 AGGGCCTGATCTACCTGTTTACTCCCAATATGAAGACTCTTACAGAAATCCACGGGTGTGGTTGGATGCAGC  
 CACCCAGATTTTCTTCTCCCTGTCCCTGGCCTTTGGAGGGCATATTGCTTTTGCAAGCTACAACCCACCC  
 AGGAACAATTGTGAGAAGGACCGCGTATTATTGCCCTGGTCAACAGCATGACCTCCCTGTATGCATCCA  
 TCGCCATCTTCTCCGTATGGGGTTCAAGGCATCCAATGACTATGGAAGGTGCCTGGACAGAAATATCTT  
 GAGCCTCATCAATGAGTTTGACCTTCCAGAGCTTAGCATCTCCAGGGATGAGTACCCATCTGTCTCATG  
 TACCTGAATGCCACTCAGACTGCGAGGGTGGCCCAACTCCCCTGAAGACCTGCCATCTGGAAGATTTTC  
 TGGATAAGAGTGCCTCGGGCCAGGCCTGCCTTCATCGTTTTTACAGAAAGCTGTCTGCATGCCAGC  
 TGCTTCTGTGTGGTCTGTGCTCTTCTTTGGGATGCTGTTTACCCTGGGTCTGTCCCTCCATGTTTGGGAAC  
 ATGGAGGGTGTCAATTACACCACTATTGGACATGGGGATCTTACCCAAAGGTATACCCAAGGAGGTATGA  
 CTGGGGTGTCTGCTTTGCCTGTTTCTCTCAGCCATTTGCTTACACTGCAGTCTGGAGGCTACTGGTT  
 GGAGATCTTTGACAGTTTGCAGCTTCTCTGAATTTAATCATCTTCGCCTTATGGAAGTGGTGGGAGTC  
 ATTCACATTTATGGGATGAAACGGAACATTTTCCCTCAAGAGAGGAGAAGTTCTACCCAGGCTGGGTGCA  
 GGTACCTGTGTCTCTGTCTTCTGCCCTCACTGTGGGTCCCTGGAGTGTCTGGCTCAGTTACTG  
 TCCAGTACAAACAGAGGTGGAAGGCTACGCATCTGGAAGTGGTC

**ACGCGTACGCGGCCGCTCGAG** - GFP Tag - GTTTAA

**Protein Sequence:**

>MG219028 representing NM\_001168644  
 Red=Cloning site Green=Tags(s)

MAQASGMDPLVDIEDERPKWDNKLQYLLSCIGFAVGLGNIWRFPYLCQTHGGGAFLIPYFIALVFEGIPL  
 FYIELAIGQRLRRGSIGVWKTISPYLGGVGLGCFSVSFLVSLYNTVLLWVWFFLNSFQHPLPWSTCPL  
 DLNRTGFVQEQSSGTVSYFWYRQTLNITSDISNTGTIQWKLFLCLVACWSTVYLCVIRGIESTGKVIYF  
 TALFPYLVLTIFLIRGLTLPGATEGLIYLFPTNMKTLQNPVWLDAAQTIFFSLSLAFGGHIAFASYNPP  
 RNNCEKDAVIIALVNSMSTLYASIAIFSVMGFKASNDYGRCLDRNILSLINEFDLPELSISRDEYPSVLM  
 YLNATQATARVAQLPLKTCHLEDFLDKSASGPGLAFIVFTEAVLHMPGASVWSVLFPGMLFTLGLSSMFGN  
 MEGVITPLLDMGILPKGIPKEVMTGVICFACFLSAICFTLQSGGYWLEIFDSFAASLNLIIIFAFMEVVGV  
 IHYGMKRNIIPQERRSSTQAGCRSPVCSPPHCGSLELLWLSYCPSTNRGGRLRIWKVV

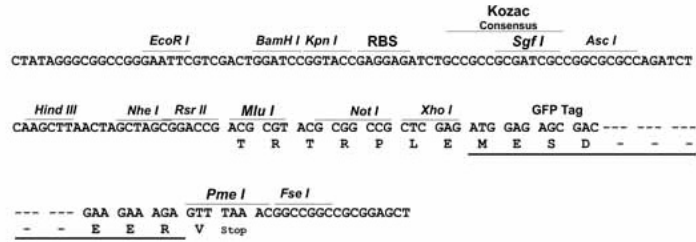
**TRTRPLE** - GFP Tag - V

**Restriction Sites:**

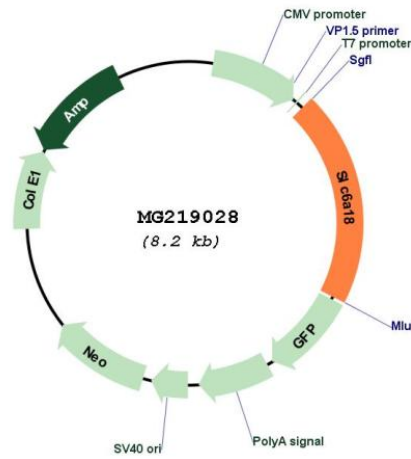
Sgfl-MluI

Cloning Scheme:

Cloning sites used for ORF Shutting:



Plasmid Map:



<b>ACCN:</b>	NM_001168644
<b>ORF Size:</b>	1656 bp
<b>OTI Disclaimer:</b>	The molecular sequence of this clone aligns with the gene accession number as a point of reference only. However, individual transcript sequences of the same gene can differ through naturally occurring variations (e.g. polymorphisms), each with its own valid existence. This clone is substantially in agreement with the reference, but a complete review of all prevailing variants is recommended prior to use. <a href="#">More info</a>
<b>OTI Annotation:</b>	This clone was engineered to express the complete ORF with an expression tag. Expression varies depending on the nature of the gene.
<b>Components:</b>	The ORF clone is ion-exchange column purified and shipped in a 2D barcoded Matrix tube containing 10ug of transfection-ready, dried plasmid DNA (reconstitute with 100 ul of water).
<b>Reconstitution Method:</b>	<ol style="list-style-type: none"><li>1. Centrifuge at 5,000xg for 5min.</li><li>2. Carefully open the tube and add 100ul of sterile water to dissolve the DNA.</li><li>3. Close the tube and incubate for 10 minutes at room temperature.</li><li>4. Briefly vortex the tube and then do a quick spin (less than 5000xg) to concentrate the liquid at the bottom.</li><li>5. Store the suspended plasmid at -20°C. The DNA is stable for at least one year from date of shipping when stored at -20°C.</li></ol>
<b>RefSeq:</b>	<a href="#">NM_001168644.1</a> , <a href="#">NP_001162115.1</a>
<b>RefSeq Size:</b>	4151 bp
<b>RefSeq ORF:</b>	1659 bp
<b>Locus ID:</b>	22598
<b>UniProt ID:</b>	<a href="#">O88576</a>
<b>Cytogenetics:</b>	13 40.13 cM
<b>Gene Summary:</b>	Functions as a sodium and chloride-dependent neutral amino acid transporter in kidneys (PubMed:26240152, PubMed:19478081). Required CLTRN for cell surface expression and for its amino acid transporter activity (PubMed:26240152).[UniProtKB/Swiss-Prot Function]