

## Product datasheet for **MG219021**

### **Slc6a18 (NM\_001168643) Mouse Tagged ORF Clone**

#### **Product data:**

Product Type:	Expression Plasmids
Product Name:	Slc6a18 (NM_001168643) Mouse Tagged ORF Clone
Tag:	TurboGFP
Symbol:	Slc6a18
Synonyms:	B0AT3; D630001K16Rik; Xt2; Xtrp2
Mammalian Cell Selection:	Neomycin
Vector:	pCMV6-AC-GFP (PS100010)
E. coli Selection:	Ampicillin (100 ug/mL)



[View online »](#)

**ORF Nucleotide Sequence:**

>MG219021 representing NM\_001168643  
 Red=Cloning site Blue=ORF Green=Tags(s)

TTTTGTAATACGACTCACTATAGGGCGGCCGGGAATTCGTCGACTGGATCCGGTACCGAGGAGATCTGCC  
 GCCGCGATCGCC

ATGGCACAGGCCCTCAGGGATGGACCCGCTTGTGGACATTGAGGATGAAAGACCCAAGTGGGACAACAAC  
 TCCAGTACCTCCTGAGCTGCATCGGTTTTGCTGTGGGGCTGGGGAACATATGGAGGTTCCCTACCTGTG  
 CCAGACCCACGGAGGAGGGCCCTTCTCATCCCTATTTTCATTGCCCTGGTCTTTGAGGGTATCCCGCTT  
 TTCTACATCGAGCTTGCCATTGGCCAGCGCCTACGGAGGGGAAGCATTGGAGTGTGGAAGACCATCTCCC  
 CTTACCTCGGTGGCGTAGGCCTGGGCTGCTTCTCAGTGTCTTCTGGTCACTTTGACTACAACACGGT  
 TCTCTGTGGGTCTTATGGTTCTTCTCAACTCCTTCCAACACCCGCTGCCCTGGAGCACATGTCCGCTG  
 GATCTCAACAGAACAGGATTTGTGCAGGAATGCCAGAGCAGTGGCACCGTGGAGTACTTCTGGTACCGGC  
 AGACTCTGAATATCACATCTGACATCAGCAACACAGGCACTATCCAATGGAAGCTGTTCTCTGCCTGGT  
 GGCTGTGGTCAACTGTGTACCTGTGTGTGCATCAGAGGCATTGAGAGCACGGGGAAGGTGATCTACTTT  
 ACAGCCTTATCCCTTACCTGGTCTAACCATCTTCTCATCAGAGGTCTTACCCTGCCTGGAGCAACAG  
 AGGGCCTGATCTACCTGTTTACTCCCAATATGAAGACTCTTACAGAAATCCACGGGTGTGGTTGGATGCAGC  
 CACCCAGATTTTCTTCTCCCTGTCCCTGGCCTTTGGAGGGCATATTGCTTTTGCAAGCTACAACCCACCC  
 AGGAACAATTGTGAGAAGGACCGCGTATTATTGCCCTGGTCAACAGCATGACCTCCCTGTATGCATCCA  
 TCGCCATCTTCTCCGTATGGGGTTCAAGGCATCCAATGACTATGGAAGGTGCCTGGACAGAAATATCTT  
 GAGCCTCATCAATGAGTTTGACCTTCCAGAGCTTAGCATCTCCAGGGATGAGTACCCATCTGTCTCATG  
 TACCTGAATGCCACTCAGACTGCGAGGGTGGCCCAACTCCCCTGAAGACCTGCCATCTGGAAGATTTTC  
 TGGATAAGAGTGCCTCGGGCCAGGCCCTGCCTTCATCGTTTTTACAGAAAGCTGTCTGCATGCCAGC  
 TGCTTCTGTGTGGTCTGTGCTCTTCTTTGGGATGCTGTTTACCCTGGGTCTGCTCCATGTTTGGGAAC  
 ATGGAGGGTGTGATTACACCACTATTGGACATGGGGATCTTACCCAAAGGTATACCCAAGGAGGTATGA  
 CTGCCATTTGCTTCACTGCGAGTCTGGAGGCTACTGGTTGGAGATCTTTGACAGTTTTGACGTTCTCT  
 GAATTTAATCATCTTCCCTTATGGAAGTGGTGGGAGTCATTACATTTATGGGATGAAACGGAACATT  
 TTCCCTCAAGAGAGGAGAAGTTTACCCAGGCTGGGTGCAGGTACCTGTGTGCTCTGTCTTCTGCTGCC  
 CTCACTGTGGTCCCTGGAGTTGCTCTGGCTCAGTTACTGTCCAGTACAACAGAGGTGGAAGGCTACG  
 CATCTGGAAGTGGTC

ACGCGTACGCGGCCGCTCGAG - GFP Tag - GTTTAA

**Protein Sequence:**

>MG219021 representing NM\_001168643  
 Red=Cloning site Green=Tags(s)

MAQASGMDPLVDIEDERPKWDNKLQYLLSCIGFAVGLGNIWRFPYLCQTHGGGAFLIPYFIALVFEIGIPL  
 FYIELAIGQRLRRGSIGVWKTISPYLGGVGLGCFSVSFLVSLYNTVLLWVWFFLNSFQHPLPWSTCPL  
 DLNRTGFVQEQSSGTVSYFWYRQTLNITSDISNTGTIQWKLFLCLVACWSTVYLCVIRGIESTGKVIYF  
 TALFPYLVLTIFLIRGLTLPGATEGLIYLFPMKTLQNPVWLDAAQIFFSLSLAFGGHIAFASYNPP  
 RNNCEKDAVIIALVNSMTSLYASIAIFSVMGFKASNDYGRCLDRNILSLINEFDLPELSISRDEYPSVLM  
 YLNATQATARVAQLPLKTHLEDFLDKSASGGLAFIVFTEAVLHMPGASVWSVLFGLFTLGLSSMFGN  
 MEGVITPLLDMGILPKGIPKEVMTAICFTLQSGGYWLEIFDSFAASLNLIIIFAFMEVVGVIIHYGMKRNI  
 FPQERRSSTQAGCRSPVCSPPHCGSLELLWLSYCPSTNRGGRLRIWKVV

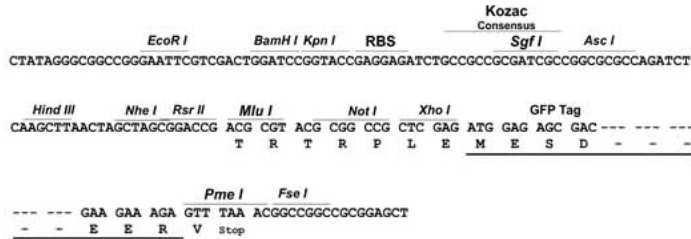
TRTRPLE - GFP Tag - V

**Restriction Sites:**

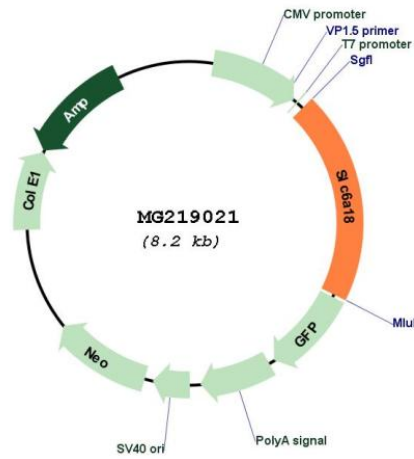
Sgfl-MluI

Cloning Scheme:

Cloning sites used for ORF Shutting:



Plasmid Map:



<b>ACCN:</b>	NM_001168643
<b>ORF Size:</b>	1626 bp
<b>OTI Disclaimer:</b>	The molecular sequence of this clone aligns with the gene accession number as a point of reference only. However, individual transcript sequences of the same gene can differ through naturally occurring variations (e.g. polymorphisms), each with its own valid existence. This clone is substantially in agreement with the reference, but a complete review of all prevailing variants is recommended prior to use. <a href="#">More info</a>
<b>OTI Annotation:</b>	This clone was engineered to express the complete ORF with an expression tag. Expression varies depending on the nature of the gene.
<b>Components:</b>	The ORF clone is ion-exchange column purified and shipped in a 2D barcoded Matrix tube containing 10ug of transfection-ready, dried plasmid DNA (reconstitute with 100 ul of water).
<b>Reconstitution Method:</b>	<ol style="list-style-type: none"><li>1. Centrifuge at 5,000xg for 5min.</li><li>2. Carefully open the tube and add 100ul of sterile water to dissolve the DNA.</li><li>3. Close the tube and incubate for 10 minutes at room temperature.</li><li>4. Briefly vortex the tube and then do a quick spin (less than 5000xg) to concentrate the liquid at the bottom.</li><li>5. Store the suspended plasmid at -20°C. The DNA is stable for at least one year from date of shipping when stored at -20°C.</li></ol>
<b>RefSeq:</b>	<a href="#">NM_001168643.1</a> , <a href="#">NP_001162114.1</a>
<b>RefSeq Size:</b>	4121 bp
<b>RefSeq ORF:</b>	1629 bp
<b>Locus ID:</b>	22598
<b>Cytogenetics:</b>	13 40.13 cM
<b>Gene Summary:</b>	Functions as a sodium and chloride-dependent neutral amino acid transporter in kidneys (PubMed:26240152, PubMed:19478081). Required CLTRN for cell surface expression and for its amino acid transporter activity (PubMed:26240152).[UniProtKB/Swiss-Prot Function]