

## Product datasheet for **MG219008**

### Grid1 (NM\_008166) Mouse Tagged ORF Clone

#### Product data:

Product Type:	Expression Plasmids
Product Name:	Grid1 (NM_008166) Mouse Tagged ORF Clone
Tag:	TurboGFP
Symbol:	Grid1
Synonyms:	GluD1; GluRdelta1
Mammalian Cell Selection:	Neomycin
Vector:	pCMV6-AC-GFP (PS100010)
E. coli Selection:	Ampicillin (100 ug/mL)
ORF Nucleotide Sequence:	>MG219008 representing NM_008166 Red=Cloning site Blue=ORF Green=Tags(s)

TTTTGTAATACGACTCACTATAGGGCGGCCGGAATTCGTCGACTGGATCCGGTACCGAGGAGATCTGCC  
GCC**CGATCGCC**

ATGGAAGCGTTGACGCTGTGGCTTCTCCCTGGATATGCCAGTGC GTTACGGTGC GGCGGACTCCATCA  
TCCACATCGGTGCCATCTTCGAGGAGAACGCAGCCAAGGACGACAGGGTGTCCAGTTGGCTGTATCAGA  
CCTGAGCCTCAATGATGACATCCTGCAGAGTGAGAAGTACCTACTCCATCAAGGTCATCGAGGCCAAT  
AATCCGTTCCAGGCGGTGCAAGAAGCCTGTGACCTCATGACCCAGGGAATTTGGCCTTGGTCACATCCA  
CGGGCTGTGCATCCGCCAATGCCCTGCAGTCCCTCACAGACGCCATGCACATCCCACACCTTTTGTCCA  
GCGCAACCCCGGGGTTACCACGTA CTGCCTGCCACCTGAACCC TAGCCCTGACGGCGAGGCCTACACA  
CTGGCTTCGAGACCACCTGTCCGTCTCAATGATGTCTCATGCTCAGGCTGGTGCAGAACTGCGCTGGCAGA  
AGTTTCGTATGTTCTATGACAGCGAGTATGATATCCGTGGGCTCCAAAGCTTCTGGATCAGGCCTCAAG  
GCTGGGTCTGGATGTCTCTTTACAAAAGGTGGACAAGAACATCAGTCACGTGTTCACTAGCCTTTTACC  
ACCATGAAGACCGAGGAGCTGAATCGCTACCGGGACACTGCGCCGTGCCATTCTACTGCTCAGCCAC  
AGGGGGCGCACTCCTTCATCAATGAGGCTGTGGAGACCACTTGGCTTCCAAGGACGCCACTGGGTCTT  
TGTGAATGAGGAAATCAGTGACCCCGAGATCCTGGATCTGGTCCACAGTGCCCTTGGCAGGATGACCGTG  
GTCCGGCAAATCTTCCATCTGCAAAGGACAACCAGAAATGTATGAGGAATAACCACCGCATCTCCCTCCC  
TGCTCTGTGATCCACAGGAAGGCTACCTCAAATGCTGCAGATCTCCAATCTCTACTGTATGACAGTGT  
TCTGATGTGGCCAACGCCTTCCACAGGAAGCTGGAAGACCGGAAGTGGCATAGTATGGCAAGCCTTAAC  
TGCATCCGGAAGTCTACCAAGCCATGGAATGGAGGGAGATCCATGCTAGACACGATTA AAAAGGGACATA  
TCACTGGCCTCACAGGGTTATGGAGTTTCGGGAAGATAGCTCAAATCCTTATGTCCAGTTTGAAATCCT  
TGGCACAACCTATAGTGAGACTTTTGGCAAAGACATGCGCAAGCTGGCCACCTGGGACTCGGAGAAGGGC  
TTGAATGCCAGTCTACAGGAGAGGCCATGGGCAGCCGCTCCAAGGACTGACTCTCAAAGTGGTGACTG  
TCTTGAAGAGCCTTTTGTGATGGTAGCTGAGAATATCCTTGGACAACCAAGCGTTACAAAGGGTTCTC  
CATAGATGTGCTGGATGCACTGGCTAAGGCTCTAGGATCAAATATGAGATATACCAGGCCCTGATGGC



[View online »](#)

```

AGGTATGGTCACCAGCTCCATAACACCTCCTGGAATGGGATGATCGGGGAGCTCATTAGCAAGAGAGCAG
ACTTGGCCATCTCTGCTATTACCATCACCCAGAGAGAGAGCGTTGTGGACTTCAGCAAGCGCTACAT
GGACTACTCAGTGGGGATCCTCATCAAGAAGCCTGAGGAGAAGATCAGCATCTTTTCCCTTTTCGCCCC
TTTGACTTTGGGTGTGGGCTGCATTGCCGACGCCATTCTGTGGTGGGCGTGCATATTCGTGTTGA
ATCGGATACAGGCTGTAAGATCTCAGAGTGCCACCCAGCCACGACCCTCGGCTTCGCCACCCTGCACAG
TGCCATTTGGATTGTCTATGGAGCCTTTGTCAGCAAGGTGGTGAAGTCTTCGGTGAACCTGTGGCCATG
CGCATCGTGATGGGACGCTGGTGGCTCTCACCCCTATTGTGTGTTCTCCTACACAGCCAACTGGCCG
CTTTCCTCACAGTGTCTAGGATGGACAACCCATAAGGACATTTAGGACCTGTCCAAGCAACTGGAGAT
GTCTTATGGCACTGTCCGGGACTCTGCTGTCTATGAGTACTTCAGAGCCAAGGGGACCAATCCCCTGGAG
CAGGATAGCACTTTTGTGAGCTCTGGCGGACCATAAGCAAGAATGGAGGGGCTGACAACTGTGTGCCA
ATCCTTCAGAAGGTATCAGGAAGGCAAAGAAGGGGAACTACGCCTTTCTATGGGATGTGGCCGTGGTGA
GTATGCAGCCCTGACAGATGACGACTGCTCAGTACTGTCATCGGCAACAGCATCAGCAGCAAGGGCTAC
GGGATTGCCCTGCAACATGGCAGCCCTACAGGGACCTTTCTCCAGAGGATCCTGGAGCTGCAAGACA
CAGGGGACCTGGATGTGCTCAAGCAGAAGTGGTGGCCACACAGGTCGATGTGACCTACCAGCCATTC
CAGTACCAGACTGAAGGCAAATCCCTAAGCTGCACAGCTTCGTTGGGGTCTTCTGCATTTTGGCCATT
GGCCTCCTTCTTGCTGCCTCGTGGCTGCTCTAGAGTTATGGTGGAAACAGCAACCCGGTGCCACCAGGAGA
CCCCAAAGAGGACAAAGAAGTGAATCTGGAGCAGGTACACCGGCGCATCAACAGCCTCATGGATGAAGA
CATTGCTCACAAGCAAATTTCCCGAGCTCCATTGAGCTTTTGCCTTAGAGATGGGGGGCTGGCTCCA
AGCCAAGCTTTGGAGCCACGAGGGAGTACCAGAACACCCAGCTCTCAGTCAGCACCTTTCTGCCGGAGC
AGAGCAGCCATGGCACCAGCCGGACACTGTCGTAGGGCCAGCAGCAACCTGCCACTGCCACTGAGCAG
CTCAGCCACTATGCCCTCAATTCAGTCAAACACAGGTCGCCCAATGGGGGACTGTTTCGACAGAGCCCG
GTGAAGACCCCATCCCTATGTCCTTCCAGCCCGTGCCTGGAGGGCTCCTCCAGAGGCTCTGGACACCT
CTCATGGCACCTCCATC
    
```

ACGCGTACGCGGCCGCTCGAG – GFP Tag – GTTTAA

**Protein Sequence:**

>MG219008 representing NM\_008166  
 Red=Cloning site Green=Tags(s)

```

MEALTLWLLPWICQCVTVRADSIIHIGAI FEENA KDDRVFQLAVSDL SLNDDILQSEKITYSIKIVIEAN
NPFQAVQAEADLMTQGILALVTSTGCASANALQSLTDAMHIPHLFVQRNPGGSPRTACHLNPSPDGEAYT
LASRPPVRLNDVMLRLVTELRWQKFMFYDSEYDIRGLQSF LDQASRLGLDVSLQKVDKNI SHVFTSLFT
TMKTEELNRYRDLRRAILLSPQGAHSF INEAVETNLASKDSHWVFNVEEISDPEILD LVHSALGRMTV
VRQIFPSAKDNQKCMRNNHRISLLCDPQEGYLQMLQISNL YLYDSVLMANAFHRKLEDRKWHSMASLN
CIRKSTKPWNNGRSMLDIKKGHITGLTGVMFREDSSNPYVQFEILGTTYSETFGKDMRKLATWDESEK
LNGSLQERPMGSRLQGLTLKVVTVLEEPFVMAENILGQPKRYKGF SIDVLDALAKALGFKYEIYQAPDG
RYGHLHNTSWNGMIGELISKRADLAISAITITPERESVVD FSKRYMDYSVGILIKKPEEKISIFSLFAP
FDFAVWACIAAAIPVVGVLIFVLNRIQAVRSQSATQPRPSASATLHSAIWIYVYGA FVQGGESSVNSVAM
RIVMGSWWLFTLIVCSSYANLAAFLTVSRMDNPIRTFQDL SKQLEMSYGTVRDSAVYEFYFRAKGTNPLE
QDSTFAELWRTISKNGGADNCVSNPSEGIRKAKKGN YAFWLVAVVEYAALTD DDCSVTVIGNSISSKGY
GIALQHGSYPYRDLFSQRILELQDTGDLV LKQKWWPHTGRCDL TSHSSTQTEGKSLKLHSFAGVFCILAI
GLLLACLVAALELWVNSNRCHQETPKEDKEVNLEQVHRR INSLMDE DIAHKQISPASIELSALEMGLAP
SQALEPTREYQNTQLSVSTFLPEQSSHGTSRTLSSG PSSLPLPLSSSATMPSIQCKHRSPNGGLFRQSP
VKTPIPMSFQVPVGGVLPEALDTSHGTSI
    
```

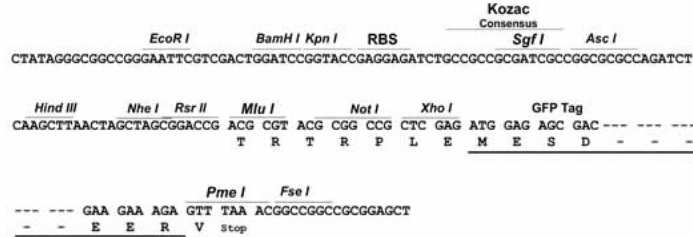
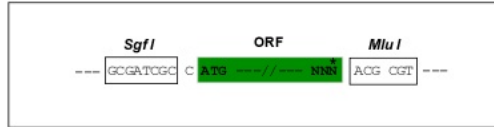
TRTRPLE – GFP Tag – V

**Restriction Sites:**

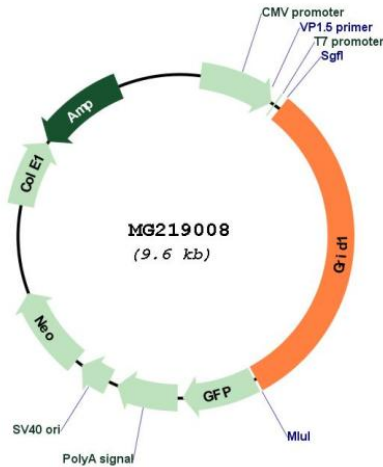
Sgfl-MluI

## Cloning Scheme:

Cloning sites used for ORF Shutting:



## Plasmid Map:



ACCN:

NM\_008166

ORF Size:

3027 bp

OTI Disclaimer:

The molecular sequence of this clone aligns with the gene accession number as a point of reference only. However, individual transcript sequences of the same gene can differ through naturally occurring variations (e.g. polymorphisms), each with its own valid existence. This clone is substantially in agreement with the reference, but a complete review of all prevailing variants is recommended prior to use. [More info](#)

<b>OTI Annotation:</b>	This clone was engineered to express the complete ORF with an expression tag. Expression varies depending on the nature of the gene.
<b>Components:</b>	The ORF clone is ion-exchange column purified and shipped in a 2D barcoded Matrix tube containing 10ug of transfection-ready, dried plasmid DNA (reconstitute with 100 ul of water).
<b>Reconstitution Method:</b>	<ol style="list-style-type: none"><li>1. Centrifuge at 5,000xg for 5min.</li><li>2. Carefully open the tube and add 100ul of sterile water to dissolve the DNA.</li><li>3. Close the tube and incubate for 10 minutes at room temperature.</li><li>4. Briefly vortex the tube and then do a quick spin (less than 5000xg) to concentrate the liquid at the bottom.</li><li>5. Store the suspended plasmid at -20°C. The DNA is stable for at least one year from date of shipping when stored at -20°C.</li></ol>
<b>RefSeq:</b>	<a href="#">NM_008166.2</a> , <a href="#">NP_032192.2</a>
<b>RefSeq Size:</b>	3445 bp
<b>RefSeq ORF:</b>	3030 bp
<b>Locus ID:</b>	14803
<b>UniProt ID:</b>	<a href="#">Q61627</a>
<b>Cytogenetics:</b>	14 20.84 cM
<b>Gene Summary:</b>	Receptor for glutamate. L-glutamate acts as an excitatory neurotransmitter at many synapses in the central nervous system. The postsynaptic actions of Glu are mediated by a variety of receptors that are named according to their selective agonists.[UniProtKB/Swiss-Prot Function]