

Product datasheet for **MG218982**

Ehbp111 (NM_001114595) Mouse Tagged ORF Clone

Product data:

Product Type:	Expression Plasmids
Product Name:	Ehbp111 (NM_001114595) Mouse Tagged ORF Clone
Tag:	TurboGFP
Symbol:	Ehbp111
Synonyms:	G430002G23Rik
Mammalian Cell Selection:	Neomycin
Vector:	pCMV6-AC-GFP (PS100010)
E. coli Selection:	Ampicillin (100 ug/mL)



[View online »](#)

ORF Nucleotide Sequence:

>MG218982 representing NM_001114595
 Red=Cloning site Blue=ORF Green=Tags(s)

TTTTGTAATACGACTCACTATAGGGCGGCCGGAATTCGTCGACTGGATCCGGTACCGAGGAGATCTGCC
 GCC**GCGATCGCC**

ATGACTTCAGTGTGAAGCGCCTGCAGCGGGTTGCAAGCGGGCCGCAAGTTCCAGTTTGTGGCGTGT
 ACCATGAACTGGTGTGGAGTGCACCAAGAAGTGGCAGCCTGACAAGCTGGTGGTGGTATGGACTCGGC
 GAACCGAAGGATCTGCTCCAAGGCCACAGCTGGCAGCCTGGCATCCAGAACCATACCGTGGCACCCTG
 GTATGGATGGTTCCTGAGAACGTGGACATCTCGGTGACCTTGTACAGGGACCCTCATGTGGACCAGTATG
 AAACCAAAGAGTGGACTTTTATTATTGAAAATGAGTCCAAGGGACAGCGGAAGGACTGGCCACAGTTGA
 TGTGAACCTAGCCACCATGCAGGGCCTGTGCCTGCTCAGGTTCCACTTCGACTGCGGCTGAAGCCAAA
 TCTGTGAAGGTGGTGCATGCCAACTGAGCCTCACCTTTCTGGGGTGTCTGCGAGAAGGCCGTGCCA
 CGGATGATGACATGCAGAGTCTGGCCAGCCTCATGAGTGTGAAGCCTAGTACGTTGGAAACCTGGATGA
 CTTTGCTGAGAGTGTGAGGAGGAAGCTAATGGCCCTGGGGCTCCTGAGGTCCGGACTCGAGGCCCCAG
 TCAGATCTGTCTCGAGAGCTGAAGACACTCTGTGAAGAAGAAGATGAAGGCCACATACGGCCCCAGCAGG
 CAGCTGCCAGACCCTCTAGTGTGAAGACACCAGCCCTGCCCCAGCACCCTACCTGGTCAGCTCCAG
 CCAGTCCCTGTTGGAGTGGTCCAAGAGGTCAACAACGGCTACCGTGGTGTCTGCATCACCACCTCACC
 ACGTCTGGCGCAATGGCCTGGCCTTCTGTGCTATTTTACATCGATTCTACCCAGACAAGATCGATTATT
 TCTCCCTTGATCCCTCAACATCAAACAGAACAACAAGCAGGCTTTTGATGGCTTCGCTGCCCTGGGTGT
 GTCTCGGCTGCTCGAGCCGGCGGACATGGTACTTCTGTCCGTACCTGACAAGCTCATCGTCATGACGTAC
 CTGTGCCAGATCCGTGCCTTCTGCACTGGCAGGAGCTGCAGCTGGTGAACCTGGAGGGCGGGCTGGCT
 CTGGCACTTATCGTGTGGCAACGCCAGCCAGCCTGCCGACTGTCTGGACGCAGGAGACCTGGCGCA
 GCGATTACGCGAGCATGGGGCTGAAGTGCCACAGAACCCTAAGGAGGCTGTGAACCGGGACTGGGGCA
 ATACCAAAGGTGGCTCCAGGGACACGGACCTGAGCTGCTCCTCTAAGGATGGGGAGGCAGAGGTTGCC
 AGGAAGCAATCCCTCAAGAGGGCGCCACCAGCGCCCTAGAGCCAGGTCGTCCACAACCCCGGTGGTCCC
 TGCAGAGGGGCTGGTGAACGGAGTGGGGCGTCAGGTGGTGTGAGTGGTGTGAGACTGAGACGGTCTCT
 GTCAATGGGGAGGCTGGGCCAGTACCTCCACCCCGAGCACATGGCTCTTTCTCCACGTGCGGGACGCCG
 ATTTGCTAAAGAAGAGGCGATCGAGGTTAAGGAATAGCAACTCTTTCTCTGTGGATGACCAGGACTCTGG
 AGCTGCAGTTGGAGCAGGGCCTGCAGGGCCTGGAGCTGTGGAAGGTCAAACCTGCCTCCAGCCCTGAC
 GCTAACCCACTCCAGCCCCAGCCCACAGCAGCCCGCCGGTGGGCCCTCCTACTGAGGAGTCATCAC
 CCAGCCTGGGGGAAGAGACAGGCCCTGCAACGGTTCAGGACACAAGTCACTACGTGTGCGCAGAGCTGCA
 AGCCCTGGAGCAGGAACAGGGACAGATAGATGGGAGGGCCGCTGAGGTGGAGAAGCAGCTGAGGAGCCTC
 ATGGAATCAGGTGCCAACAGGCTGCAGGAGGAGGTGCTGATTCAGGAATGGTTCACCCTGGTCAACAAGA
 AGAATGCGCTCATCCGGAGGCAGGACCAGCTGCAGCTGCTCATCGAGGAGCAGGACTTGGAGCGGAGGTT
 TGAAGTGTGAGCCGAGAGTTGCGGGCCATGCTGGCCATTGAAGAGTGGCAGAAAACAGTTGCGCAGCAG
 CACCGGAGCAACTCCTGTTGGAGGAGCTGGTGTCTCTGGTGAACCAGAGGGATGAACTGGTCCGGGACC
 TGGACCAGAAGGAACGGATCGCTCTGGAGGAAGATGAGCGCCTAGAACGAGGCCCTGGAGCAGAGACGTGC
 CAAGGTGAGCCGGCAGCTGAGCAGGCGGGAACGCTGTACCCTGAGC

ACGCGTACGCGGCCGCTCGAG – GFP Tag – GTTTAA

Protein Sequence: >MG218982 representing NM_001114595
 Red=Cloning site Green=Tags(s)

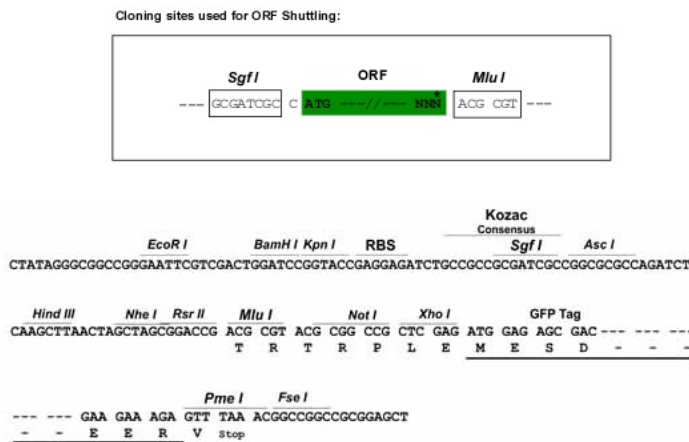
```

MTSVVKRLQRVKGKRAAKFQFVACYHELVLECTKKWQPKLVVVWTRRRRNICSKAHSWQPGIQNPYRGTV
VWMPVENVDISVTLYRDPHVDQYETKEWTFI IENESKGQRKVLATVDVNLAHAGPVPAQVPLRLRLKPK
SVKVVHAELSLTL SGVLLREGRATDDDMQSLASLMSVKPSDVGNLDDFAESDEEEANGPGAPEVTRTRGPQ
SDL SRELKTLCEEEDEGHIRPQQAARPSAEDTSPAPAPPTLVSSSQSLEWCQEVTNGYRGVCITNFT
TSWRNGLAFCAILHRFYDPKIDYFSLDPLNLIKQNNKQAFDGAALGVSRLLEPADMVLLSVPDKLI VMTY
LCQIRAFCTGQELQLVQLEGGGSGTYRVGNAQPSPDCLDAGDLAQRLREHGAEVPTPEKEAVNRGTGA
IPKVASRDIDLSCSSKDGEAEVAQEAIPQEAPTDGPRARSSTTPVVAEGLVNGVGASGGVSGVRLRRSS
VNGEAGVPPRAHGSF SHVRDADLLKKRRSRLRNSNSFSVDDQDGAAGVAGPAGPAGVEGPNPASSPD
ANPLPAPAPQQPPGGPPPTEESSPSLGEETGLQRFQDTSQYVCAELQALEQEQGQIDGRAAEVEKQLRSL
MESGANRLQEEVLIQEFWTLVNKKNALIRRODQLQLLIEEQDLERRFELL SREL RAMLAIEEWQKVAQQ
HREQLLLEELVSLVNQRDELVRDL DQKERIALEEDERLERGLEQRRRKVSRQLSRRERCTLS
  
```

TRTRPLE - GFP Tag - V

Restriction Sites: SgfI-MluI

Cloning Scheme:



ACCN: NM_001114595

ORF Size: 2286 bp

OTI Disclaimer: The molecular sequence of this clone aligns with the gene accession number as a point of reference only. However, individual transcript sequences of the same gene can differ through naturally occurring variations (e.g. polymorphisms), each with its own valid existence. This clone is substantially in agreement with the reference, but a complete review of all prevailing variants is recommended prior to use. [More info](#)

OTI Annotation: This clone was engineered to express the complete ORF with an expression tag. Expression varies depending on the nature of the gene.

Components: The ORF clone is ion-exchange column purified and shipped in a 2D barcoded Matrix tube containing 10ug of transfection-ready, dried plasmid DNA (reconstitute with 100 ul of water).

Reconstitution Method:

1. Centrifuge at 5,000xg for 5min.
2. Carefully open the tube and add 100ul of sterile water to dissolve the DNA.
3. Close the tube and incubate for 10 minutes at room temperature.
4. Briefly vortex the tube and then do a quick spin (less than 5000xg) to concentrate the liquid at the bottom.
5. Store the suspended plasmid at -20°C. The DNA is stable for at least one year from date of shipping when stored at -20°C.

RefSeq: [NM_001114595.1](#), [NP_001108067.1](#)

RefSeq Size: 3543 bp

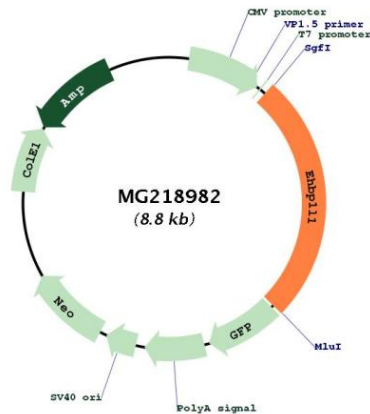
RefSeq ORF: 2289 bp

Locus ID: 114601

Cytogenetics: 19 A

Gene Summary: May act as Rab effector protein and play a role in vesicle trafficking (By similarity). Involved in apical-directed transport in polarized epithelial cells; the functions seems to implicate Rab8, BIN1 and possibly DNM1 (PubMed:26833786).[UniProtKB/Swiss-Prot Function]

Product images:



Circular map for MG218982