

Product datasheet for **MG218976**

Cep72 (NM_028959) Mouse Tagged ORF Clone

Product data:

Product Type:	Expression Plasmids
Product Name:	Cep72 (NM_028959) Mouse Tagged ORF Clone
Tag:	TurboGFP
Symbol:	Cep72
Synonyms:	2610029E11Rik; 4933440J22Rik
Mammalian Cell Selection:	Neomycin
Vector:	pCMV6-AC-GFP (PS100010)
E. coli Selection:	Ampicillin (100 ug/mL)



[View online »](#)

ORF Nucleotide Sequence:

>MG218976 representing NM_028959
 Red=Cloning site Blue=ORF Green=Tags(s)

TTTTGTAATACGACTCACTATAGGGCGGCCGGAATTCGTCGACTGGATCCGGTACCGAGGAGATCTGCC
 GCC**CGGATCGCC**

ATGGCCAGCCAGCGTTGGTTTTGTGTGAAGAGACTGTACGAGAGCGCAGCGCCTGGTCCCCACC
 GCGACCTGGCTGAACTTCGATCTTTATCTATTCCTGGAACATACCAAGAGAAGATTACTCACCTGGGAAA
 CTCTCTGATGCACTTGACAGCTCTAAAATCCTTAGACCTCTCACGTAACCTCTGGTTAGCCTTGAGGGT
 ATACAGTATCTGGTCTCCTTGGAGAGTCTCAATCTCTACTACAACGTATTTCTCATTAGCAGAAGTAT
 TTAGGCTCCACACCCTACTGGAGCTCCAGGACGTGGACTTCCGGCTTAACCCCGTTGGAAGAATGAGTC
 TGACTACCGCTGTTTGTCTGCACATGCTCCGAAGCTCCGACAGCTAGATGACCGTCTGTGAGAGAA
 AGTGAGCGGAAAGCTTCCAGCTTCATTTTGGCCAGAAGATTCCTGAACCTCAAAGGAGAAGCTTCTCAA
 CCACCTTAACCGTTGGAAGACCACACCCTCAGAAACAGATGTACTGAGACCTCGGCCAAAAAATGCTT
 GGTGATGGATGCTGATGATGAGGCTGTCTGAACCTTATTGCCGAGTGTGAATGGACCTAAGCAATCCT
 CCTGGGAACATGAGCTCCAGCCAAAAGGAACATGAAGCTGACCTCCATTATGCCAAAGAGTCCAGACATC
 TGGTGGTCCCTTTGCCATCCAGCACCAGTGTGGGGATTAGCGAGGCGAGGCCATGAGAAGAAGAAAGT
 CACCTCCAGAGGGTGTCCAGGTCATTCACCGCAGGACCAGCTCTGTGGGAACTCCCCACAGCATGGC
 TTGCCAGAGGCTGCCATATGCACGTACAGCATGCCCGCATCACTTCACAGCCAGACTCTGTGGATGTTG
 AGGACTGTGCTTCATCTGCTCAGAAATCAAGTTTGTATCACAAAAACAGTAAATCCTTTGCTGTCCC
 TGAAAAGTACAGGAAGCGAAGGATGCCTGGTGGGAGATTCCAGGTGCCTTCAGACCGGAGTGTGAGC
 TTCTAGAGAGGCTGACGGGCCCTCCAGCCTTGAGGACAGTCTAAGCAGACAGGATGGCTTGGAGGGCC
 AGAGTCAGGTGGCCTTGTCTCACTCTGAGGCTTTGGAGGCTGAAGAGCGGACATCTCATGGACAAGTGA
 CCCAGAGTGTCTCCTAAACTCTGCTCGGCAGCGGTGCCTGAGCGGAGGTCCACTCTGGAAGTGCC
 CTTCTGGAGGCGCTTCTCGACCTGATAGACAGGTGCTCAAGTGGCAGTGGATCCCTGCATGGCAATGAGG
 CCTTCTTGTCTCAGGCCAAGCATGTTTTGTATCTCTTCAAGAGTTCACAGCAACTCGGGACAGTTCAGC
 ACTTGAAAAGGAAGGAATTGGTTACCTATCTTTGAAAATAAGACTCTGCAAAGCCGCTTGTGAGCAA
 CAGCAACAGTATACTGCTACAGTGACCAAGATGACAGCAGAGCTCAATAATACAAAGAGGGAGCTGGACA
 CATTGAGACAACATTTGGACAAATCATTGGAAGAGAATAGCCACTTAAAGTCTCTCTGTACAATGTGAA
 AAAAGAAGTAAAGACTGCAGACACTTCACTGCACTCACTTTGCAGATCACTGGACTTCAGGCAAGTATG
 AAGCAGCTCTCTGGGAAGTTGTGGAGCTGAAGCAACACGTGGAGCACTATGACAAGATCCAGGAGCTCA
 CACAGATGCTTCAAGAGAGCCACAGCTCCCTGGTAAAGCACAATGAGCATCTCTGCAGGAGCTGAGCCG
 CACACGGGCACAGCATAGAGCTGAGGTAGAGCAGATGCGCTGGAGCTTCCAGGAATTTAAGAAGACTACG
 GCCTGATCCCTCACCGTAGCTCCCGACGTGGGGCCGGCAGTCTCTGC

ACGCGTACGCGGCCGCTCGAG - GFP Tag - GTTTAA

Protein Sequence:

>MG218976 representing NM_028959
 Red=Cloning site Green=Tags(s)

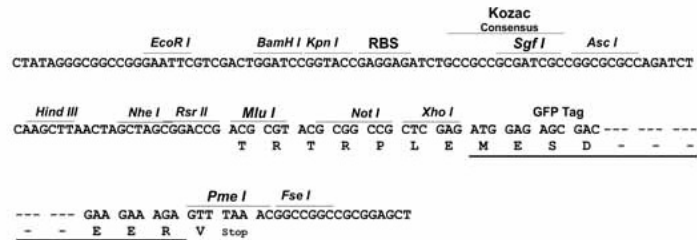
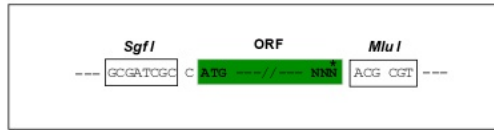
MAPGQRLVLCSEETVRRERSGLGPHRDLAELRSLIPGTQYQEKITHLGNSLMHLTALKSLDLNRNSLVSLEG
 IQYLVSLNLYNCISSLAEVFRLHLLLELQDVDFRLNPVVKNESDYRLFVVHMLPKLRQLDDRVPVRE
 SERKASQLHFAPEDSLNSKENFSTTLTVGRPHHLRNRCTETSARKKCLVMDADDEAVLNLIAECEWDLNPN
 PGNMSSSQKEHEADLHYAQESRHLLSPLSIQHQCSDSARRGHEKKVTSRGCPSHPQDQLCGELPLQHG
 LPEACHMHVQHARITSQPDSVDVEDCASSAQKSSLSSQKTVNPLPVPEKYRKRMPGGRFQVPSDRECLS
 FLERADGPSLSDLSRQDGLGQSQVALSHSEALEAEERTSHGTSAPRVLSPKLCSAVPERRSTLEVA
 LLEALLDLIDRCSSGSLHGNEAFLAQAKHVLSSLQEFATRDSSALEKEGIGYLSLENKTLQSRLEAQ
 QQQYTATVTKMTAELNNTKRELDLRLQHLDKSLEENSHLSLLYNVKEVKTADTSTALTLQITGLQASM
 KQLSGEVVELKQVHEHYDKIQELTQMLQESHSSLVSTNEHLLQELSRTRAQHRAEVEQMRWSFQEFKKT
 ALIPHRSSRRGGRQSC

TRTRPLE - GFP Tag - V

Restriction Sites: SgfI-MluI

Cloning Scheme:

Cloning sites used for ORF Shutting:



ACCN: NM_028959

ORF Size: 1938 bp

OTI Disclaimer: The molecular sequence of this clone aligns with the gene accession number as a point of reference only. However, individual transcript sequences of the same gene can differ through naturally occurring variations (e.g. polymorphisms), each with its own valid existence. This clone is substantially in agreement with the reference, but a complete review of all prevailing variants is recommended prior to use. [More info](#)

OTI Annotation: This clone was engineered to express the complete ORF with an expression tag. Expression varies depending on the nature of the gene.

Components: The ORF clone is ion-exchange column purified and shipped in a 2D barcoded Matrix tube containing 10ug of transfection-ready, dried plasmid DNA (reconstitute with 100 ul of water).

Reconstitution Method:

1. Centrifuge at 5,000xg for 5min.
2. Carefully open the tube and add 100ul of sterile water to dissolve the DNA.
3. Close the tube and incubate for 10 minutes at room temperature.
4. Briefly vortex the tube and then do a quick spin (less than 5000xg) to concentrate the liquid at the bottom.
5. Store the suspended plasmid at -20°C. The DNA is stable for at least one year from date of shipping when stored at -20°C.

RefSeq: [NM_028959.3](#), [NP_083235.3](#)

RefSeq Size: 3632 bp

RefSeq ORF: 1941 bp

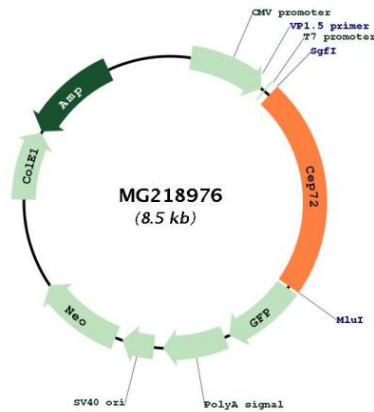
Locus ID: 74470

UniProt ID: [Q9D3R3](#)

Cytogenetics: 13 C1

Gene Summary: Involved in the recruitment of key centrosomal proteins to the centrosome. Provides centrosomal microtubule-nucleation activity on the gamma-tubulin ring complexes (gamma-TuRCs) and has critical roles in forming a focused bipolar spindle, which is needed for proper tension generation between sister chromatids. Required for localization of KIZ, AKAP9 and gamma-tubulin ring complexes (gamma-TuRCs) (By similarity). Involved in centriole duplication. Required for CDK5RAP22, CEP152, WDR62 and CEP63 centrosomal localization and promotes the centrosomal localization of CDK2 (By similarity).[UniProtKB/Swiss-Prot Function]

Product images:



Circular map for MG218976