

Product datasheet for **MG218973**

Rgl3 (NM_023622) Mouse Tagged ORF Clone

Product data:

Product Type:	Expression Plasmids
Product Name:	Rgl3 (NM_023622) Mouse Tagged ORF Clone
Tag:	TurboGFP
Symbol:	Rgl3
Synonyms:	1300003D20Rik; mFLJ00153
Mammalian Cell Selection:	Neomycin
Vector:	pCMV6-AC-GFP (PS100010)
E. coli Selection:	Ampicillin (100 ug/mL)



[View online »](#)

ORF Nucleotide Sequence:

>MG218973 representing NM_023622
 Red=Cloning site Blue=ORF Green=Tags(s)

TTTTGTAATACGACTCACTATAGGGCGGCCGGGAATTCGTCGACTGGATCCGGTACCGAGGAGATCTGCC
 GCC**GCGATCGCC**

ATGGAGAGGACAGCGGGCAAAGAGCTGGCCCTGGCGCCGCTGCAGGACTGGGGCGAGGAGACCGAGGATG
 GCGCCGTGTACAGCGTCTCCCTGCGGGCGCAGCGCAGCCAGCGCTCGACCCAGAGAGGTCTGGAGAAGG
 CCAGACCCCATCCCGGCTACCGACACCTTCCTTCATTACCGAACCAAGGTGCGGGCGCTGAGGGCC
 GCCCGACTGGAGCGGCTGGTGCATGAGTTGGTGTCCGGAGACCGCAGCAGGATCCTGGCTTCGTGCCTG
 CCTTCTGGCCACCCACCGGGCTTTGTACCCACAGCCCGCTTTTGGGTTTTCTGTACCCCGCCACC
 GCCCGCCACCACCTCCTGCTGGGGTAGACAGCAAGAGGACAGAGGGACAAGATCTGAACCTCAGCAAG
 AACCTGAGGGCTGTAGTTTCGGTGTGGTTCTTGGCTGCGAAATCATCCTCAGGACTTCCGGGATCCCC
 CTGATCATCAGAACCTAGGCAATGTCCGAATCTTTTGGGCTGGCAGCCCCAGGAGGGCAGAAGCCAG
 GGAAGCAGAGAACTTCTAGAAGATTTCTGAAGGAGGCTAAGGGAGAGCAGACAGAGGAGGAAAAGCGA
 CTGGCTTGGTCAGGCCCTCTAGGATTGCCAGACCCCGGATCGGAGTTTGGGAGGACTGTGTGGAAAG
 AGGAAGGCCCCAGTTCAGAAGGCCAGAGCTCCTGGACTTCAGCGTGGATGACGTGGCAGAGCAGCTGAC
 CCTATGGATGTGGAGCTTCTTTCGCGGTGAGGTCTGCGAATGCCTGGGTTCCATGTGGTCTCAGCGC
 GACCGGCCAGGAGCTGCAGGCATCTCTCCACAGTGCCTGCCACCGTAGCCAGTTCAATACGGTACCG
 GCTGCGTGTGGGCTCGGTGCTCGCTGCGCCCGGCTGGCGGCCCTCGCAGAGGGCACAGCGCATCGAAA
 ATGGATTGCGATCGCCAGCGGTGCAGGAACTACGAAATTTCTTTCATTGCGAGCGATCCTGTCCGCC
 CTGCAATCAACCCATCTACAGACTCAAGCGCAGCTGGGAGCTGTGAGCCGGGAACCGCTGTCTGTTT
 TCAGGAACTGTACAGATTTTTCTGATGAGGATAACCATCTCAGCAGCCGAGCGATTCTTTCCAGGA
 GGAGACCACTGAGGATGATGACTGCCCTCAGGAAGTCTGCCATCAAACTGCCCCGGGTCTGTCCCC
 TACCTTGGCACCTTCTCACAGACTTGGTTATGCTGGATACAGCCTTACCGGATACGTTGAGGGAAACC
 TCATCAACTTTGAAAAGAGGAGGAAGGAGTGGGAGATCCTGGCCGAATCCAGCAGCTACAGCAACGCTG
 CCAGCGCTACAGCCTGAGCCCCCGCCCAATCCTGGCTGCACTTCGAGCCAGCGCCAGCTCAGCGAG
 GAGCAAAGCTACCGAGTCTCCCGTGTATTGAGCCACCAGCTGCCTCCTGTCCCAGCTCCCTCGTATCC
 GGCAGCGCATCAGCCTCACAAGCGTCTCAGTGCAGAGCTGTCCCGAGAGAAGAATCATCTCCTGGCGG
 GAGTCCCGGGGATCCGTCTCACCTACCTCCAGTGTGTCTCCAGGTTACCCCCATCCAGCCCTAGAAAC
 CGAGAGCCTCCTCCTCCGGCAGTCTCCAGCCTCCCCAGGGCTCAGAGCCCCAGCACCAGCTCTCCC
 TGACCATGGACCCACCAGGGCCCTGGCCCGTGACCTTGACTCCGAGCAGCTCCCGAGTCCCTCCTCGG
 GCAGCAGACGTCAGAGGCCCGCGTCATCAGAGTCAGCATCAACAATAACCACGGGAACCTGTATCGGAGC
 ATCTTGCTTACTTGTGAGGACAAAGCCCCAGCGTGGTGCAGAGCCCTGGAGAAGCACAATGTGCCCC
 AGCCCTGGGCCGTGACTACCAGCTCTCCAGGCTCCTGCTGGGGACAGAGAGCTCCTGATTCCAGACGG
 TGCCAACGTCTTCTACGCTATGAGCCAGCTGCCCTGGTACTTCTTGTTCGTGCGAAAGAGGGGACA
 GGACATACACTGTCTGCCTCCCAACC

ACGCGTACGCGGCCGCTCGAG - GFP Tag - GTTTAA

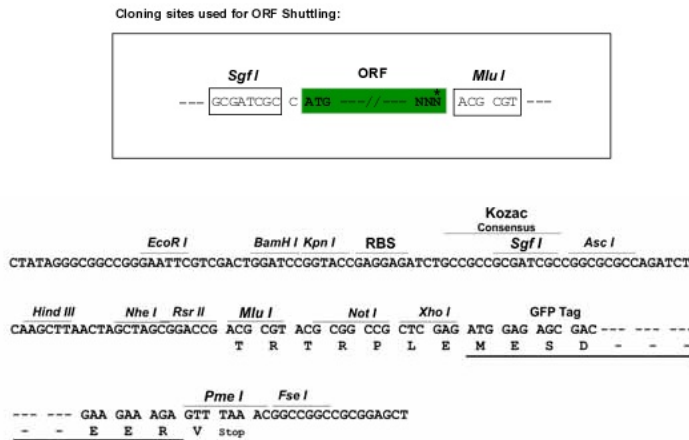
Protein Sequence: >MG218973 representing NM_023622
 Red=Cloning site Green=Tags(s)

MERTAGKELALAPLQDWGEETEDGAVYSVSLRRQRSQRSTPERSGEGQTPIPATDTFLHYRTSKVRLARA
 ARLERLVHELVSQDREQDPGFVPAFLATHRAFVPTARVLGFLPPPPPPPPAGVDSKRTEGQDLNFSK
 NLRAVVSVLGSWLRNHPQDFRDPDPHQNLGNVRIFLGWAAPGGAEAREAEKLLDFLKEAKGEQTEEEKR
 LAWSGPPRIAQTPGSEFAEDCVEEEGPSSEGPLLDFSVDDVAEQLTMDVELFLRVRSCLEGLSMWSQR
 DRPGAAGISPTVRATVAQFNTVTGCVLGSVLAAPGLAASQRAQRIEKWIRIAQRCRELRNFSSLRILSA
 LQSNPIYRLKRSWGAVSREPLSVFRKLSQIFSDENHLSSRAILSQEETEDDDCPGSLPSKLPVPPV
 YLGTFLDLVMLDTALPDTLKGNLINFEKRRKEWEILARIQQQQRCQRYSLSPRPPILAALRAQRQLSE
 EQSYRVSRIEPPAASCSPSPRIRRRISLTKRLSAKLSREKNSSPGGSPGDPSSPTSSVSPGSPSSPRN
 REPPPPGSPASPQPSPSTKLSLTMPPGPWPVTLTPSSSRVPLLQQQTSEARVIRVSIINNHGNLYRS
 ILLTCQDKAPSVVQRALEKHNVPQPWARDYQLFQVLPGDRELLIPDGANVFYAMSPAAPGDFLLRRKEGT
 GHTLSASPT

TRTRPLE - GFP Tag - V

Restriction Sites: SgfI-MluI

Cloning Scheme:



ACCN: NM_023622

ORF Size: 2127 bp

OTI Disclaimer: The molecular sequence of this clone aligns with the gene accession number as a point of reference only. However, individual transcript sequences of the same gene can differ through naturally occurring variations (e.g. polymorphisms), each with its own valid existence. This clone is substantially in agreement with the reference, but a complete review of all prevailing variants is recommended prior to use. [More info](#)

OTI Annotation: This clone was engineered to express the complete ORF with an expression tag. Expression varies depending on the nature of the gene.

Components: The ORF clone is ion-exchange column purified and shipped in a 2D barcoded Matrix tube containing 10ug of transfection-ready, dried plasmid DNA (reconstitute with 100 ul of water).

Reconstitution Method:

1. Centrifuge at 5,000xg for 5min.
2. Carefully open the tube and add 100ul of sterile water to dissolve the DNA.
3. Close the tube and incubate for 10 minutes at room temperature.
4. Briefly vortex the tube and then do a quick spin (less than 5000xg) to concentrate the liquid at the bottom.
5. Store the suspended plasmid at -20°C. The DNA is stable for at least one year from date of shipping when stored at -20°C.

RefSeq: [NM_023622.4](#), [NP_076111.2](#)

RefSeq Size: 2550 bp

RefSeq ORF: 2130 bp

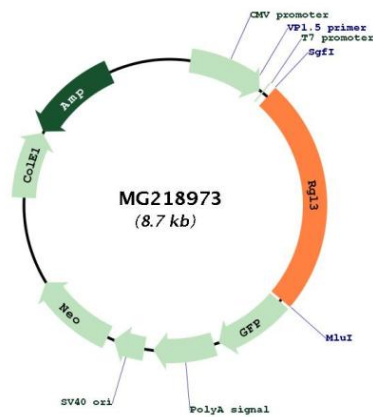
Locus ID: 71746

UniProt ID: [Q3UYI5](#)

Cytogenetics: 9 A3

Gene Summary: Guanine nucleotide exchange factor (GEF) for Ral-A. Potential effector of GTPase HRas and Ras-related protein M-Ras. Negatively regulates Elk-1-dependent gene induction downstream of HRas and MEKK1.[UniProtKB/Swiss-Prot Function]

Product images:



Circular map for MG218973